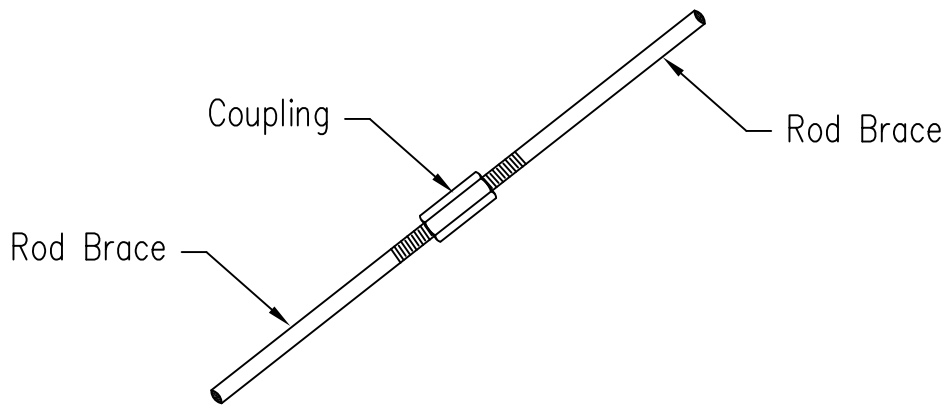
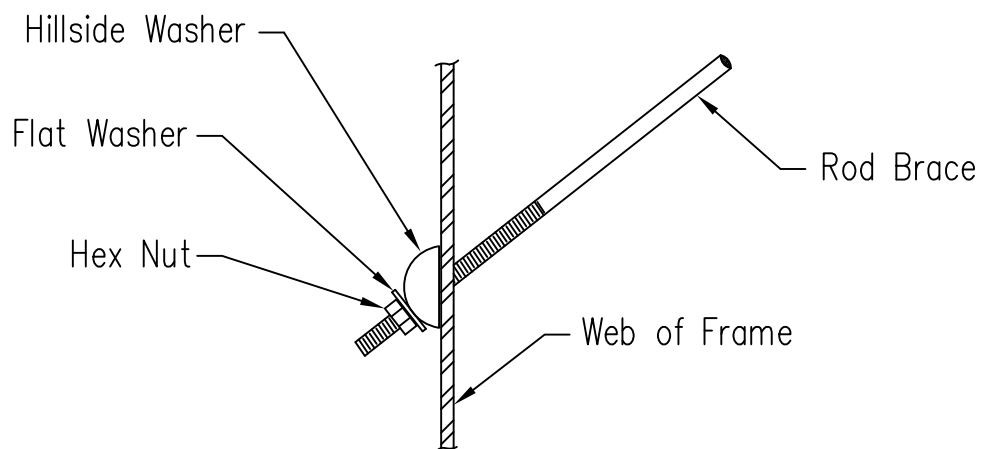


Cable Brace to Frame Detail



Rod Brace with Coupling Detail

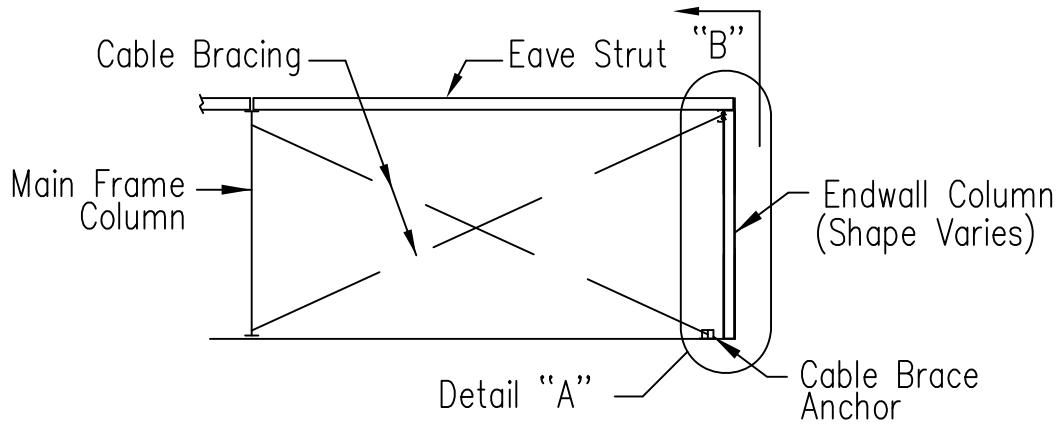


Rod Brace to Frame Detail

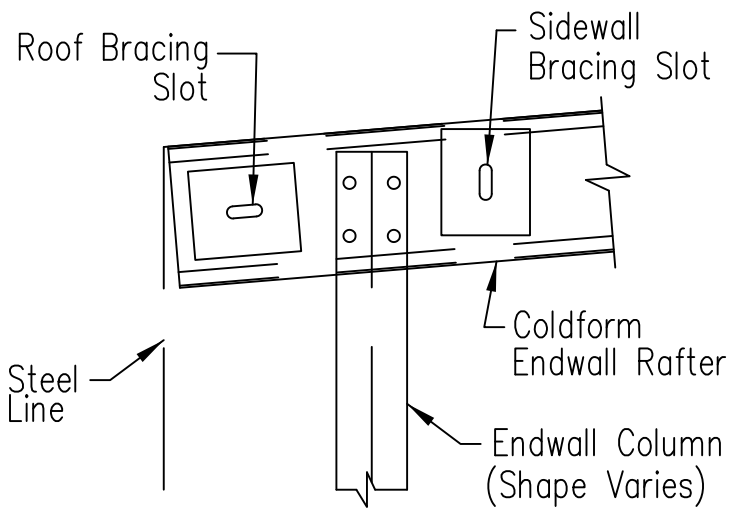
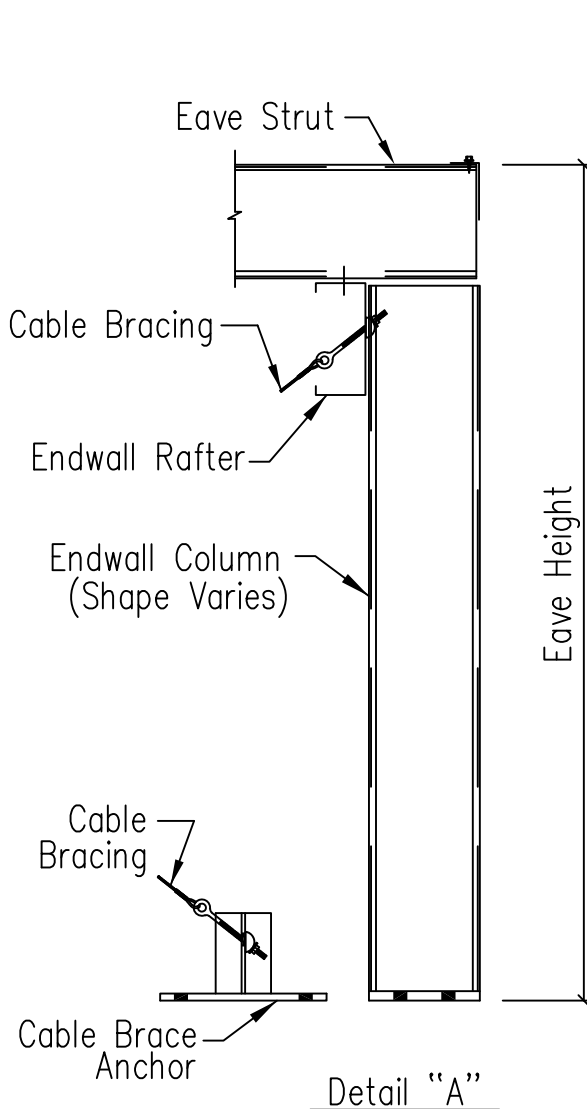
Cable or Rod Brace to Frame Connection

DRAWING NO.

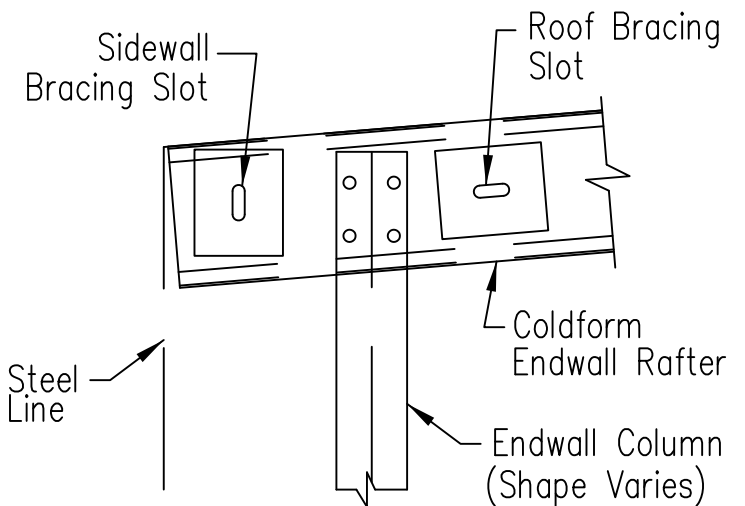
SD66



Sidewall End Bay Elevation



Section "B" - By-Pass Sidewall

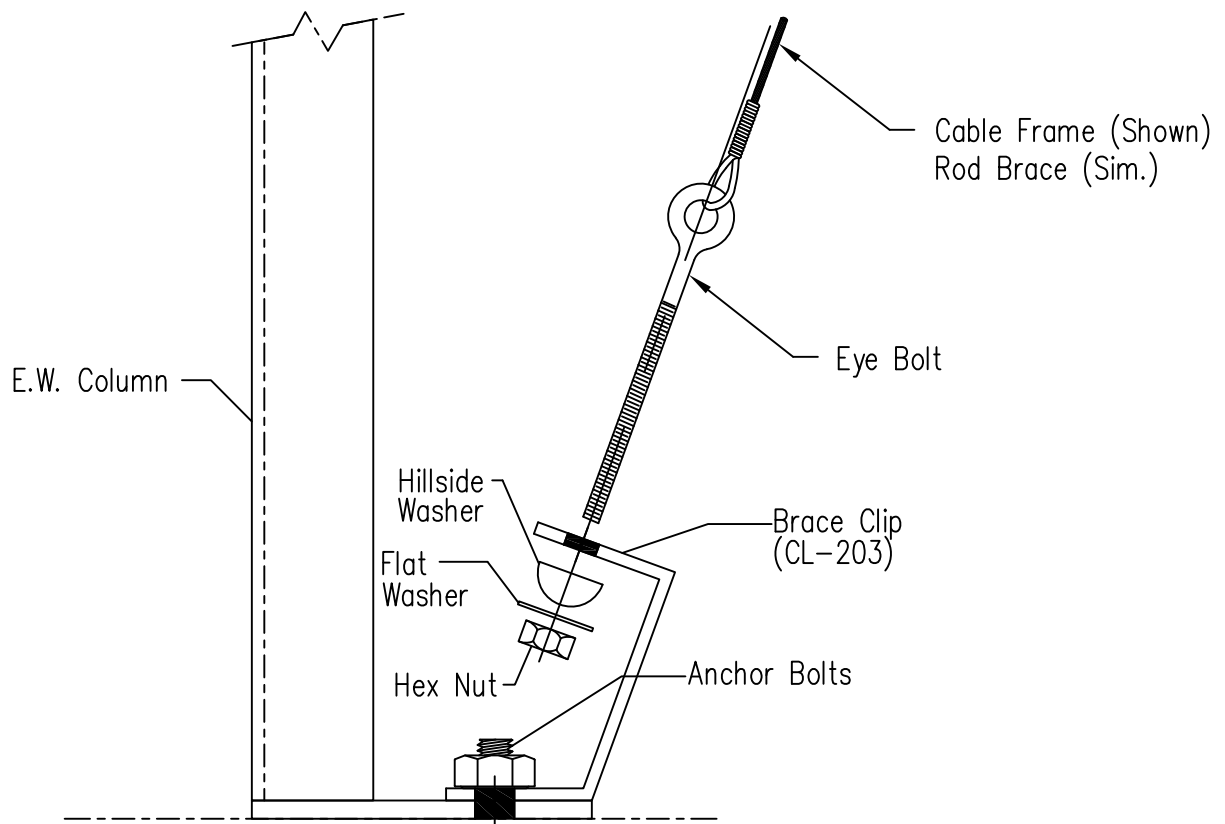


Section "B" - Flush Sidewall

End Bay Bracing

DRAWING NO.

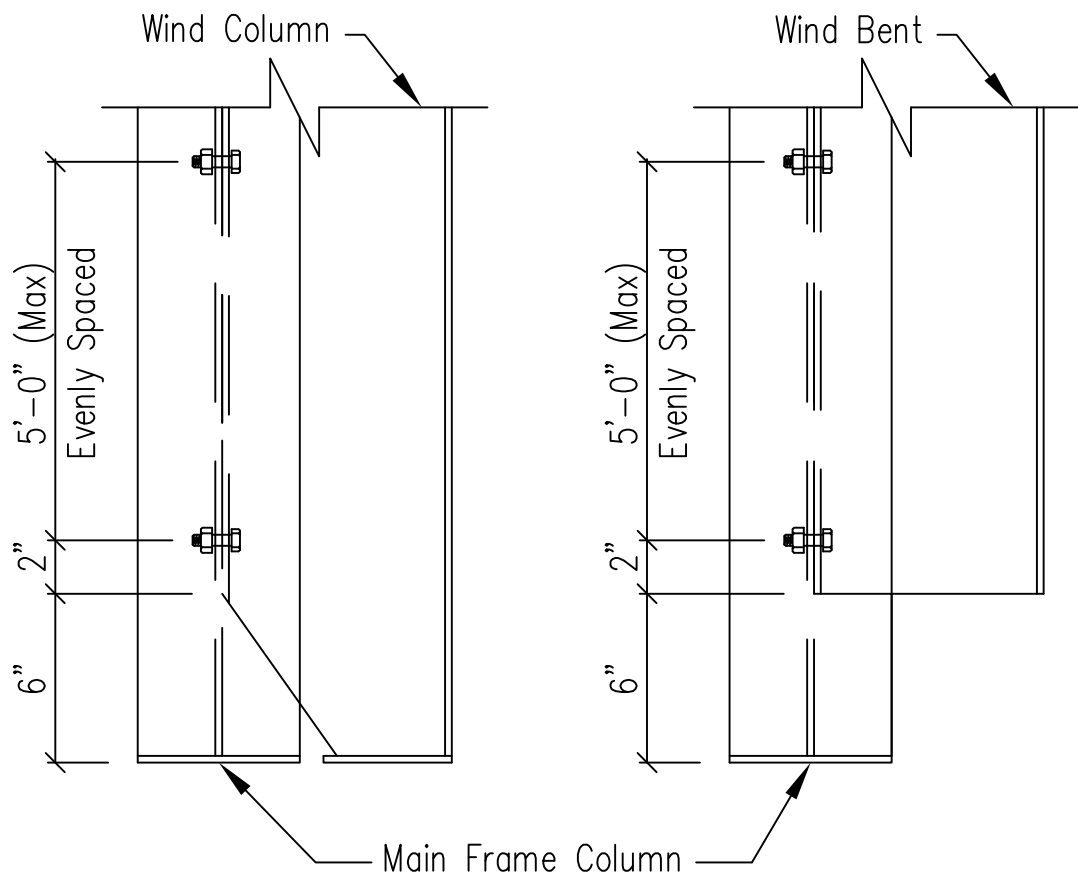
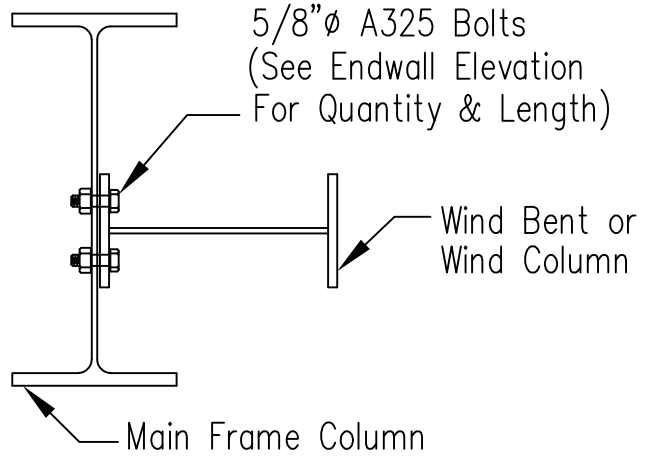
SD67



Cable or Rod Brace to Endwall Column

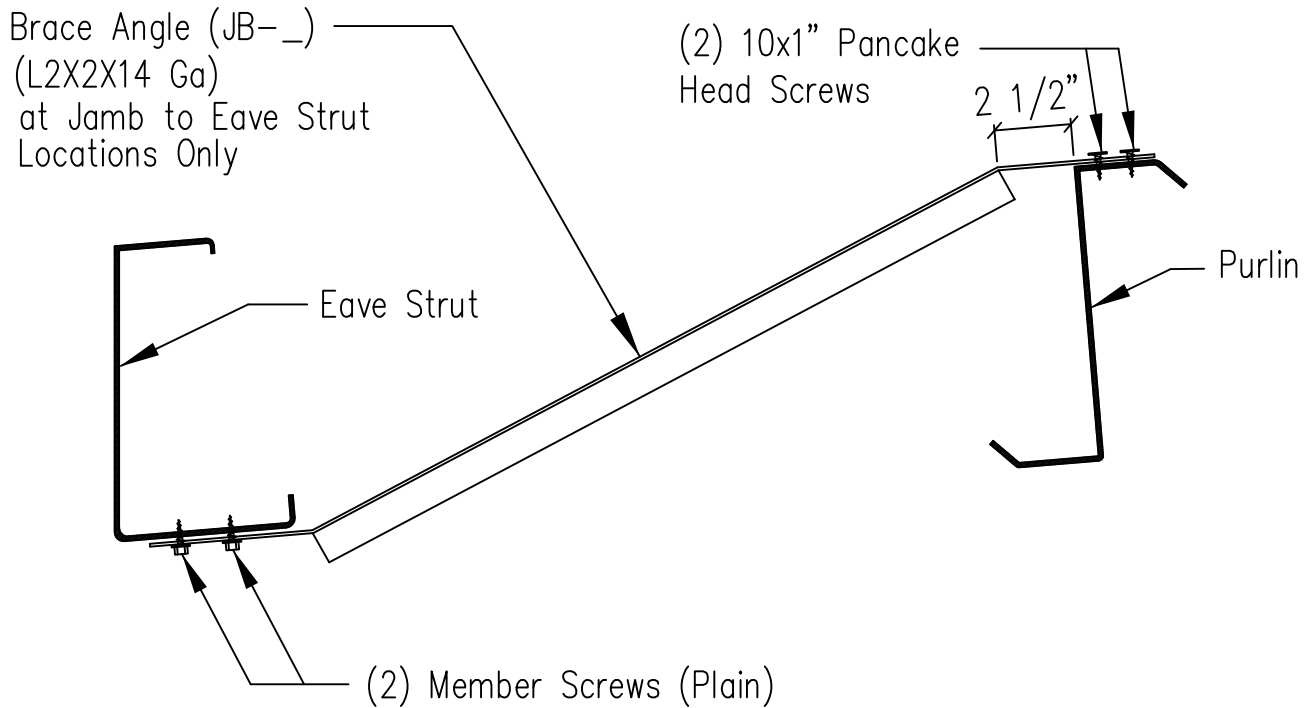
DRAWING NO.

SD68

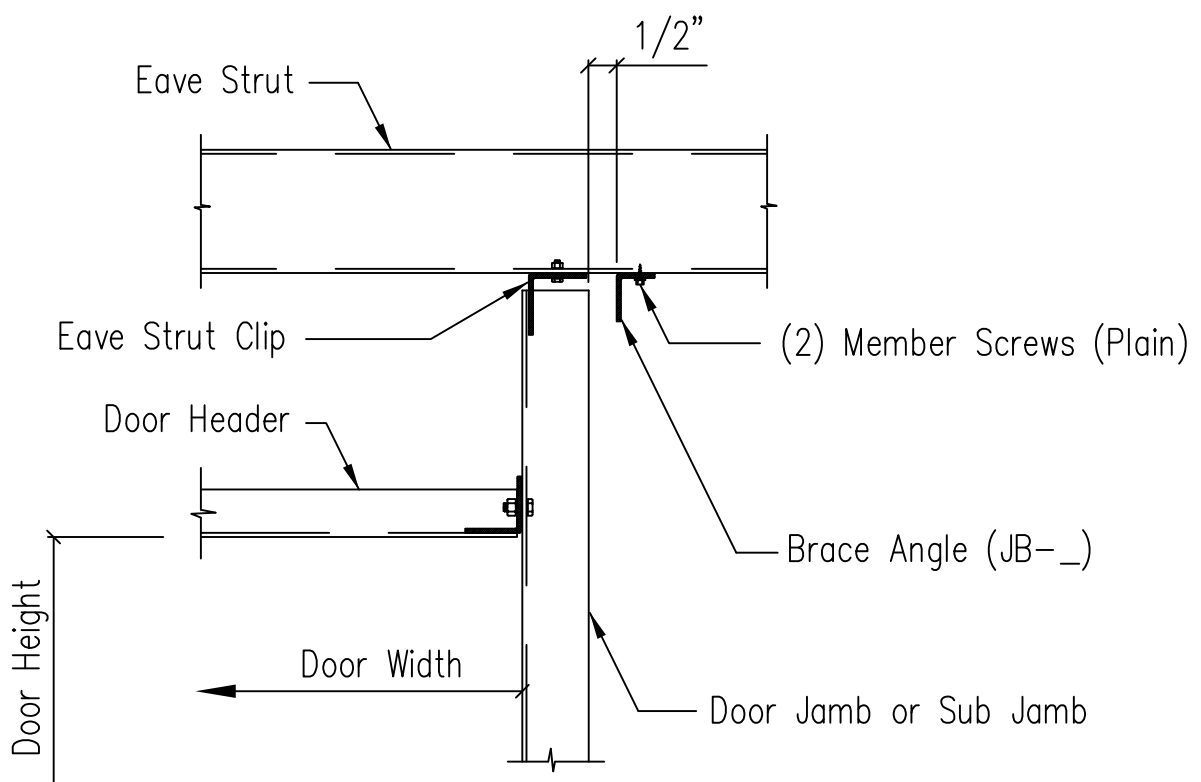


Wind Column/Wind Frame Detail

DRAWING NO.
SD70



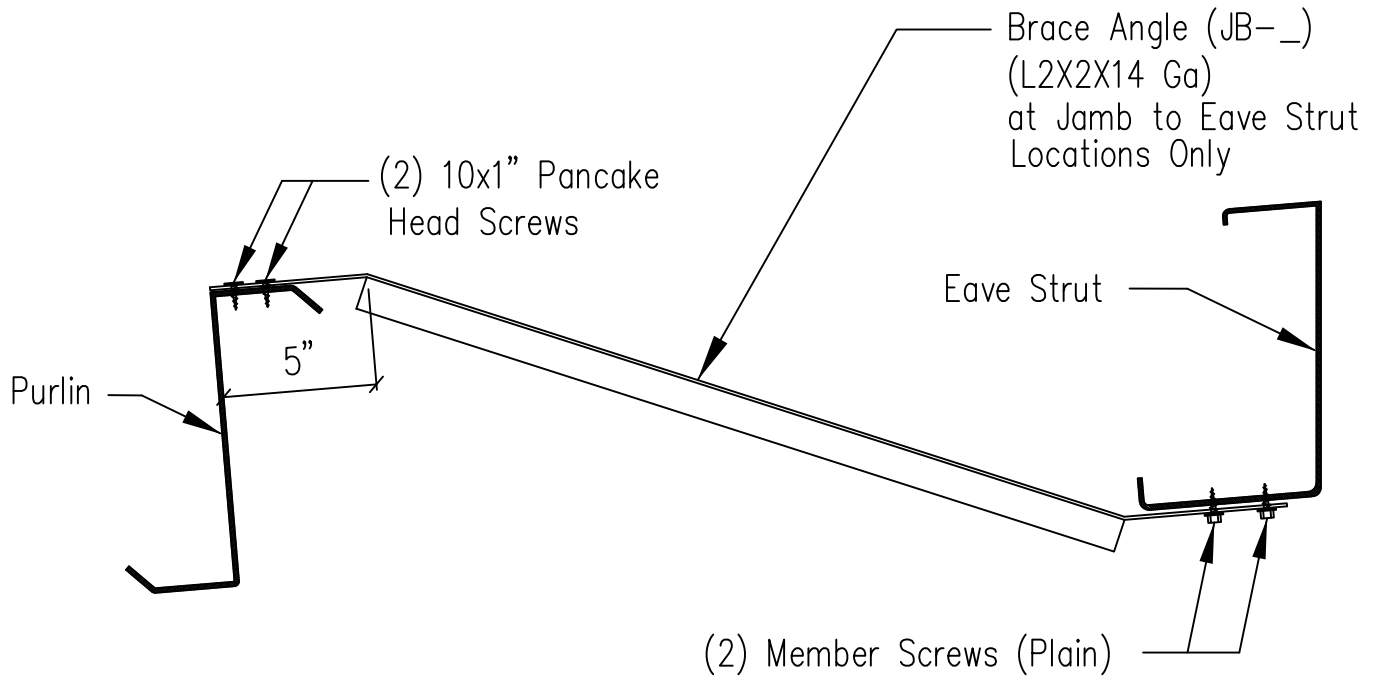
Eave Strut Brace Section



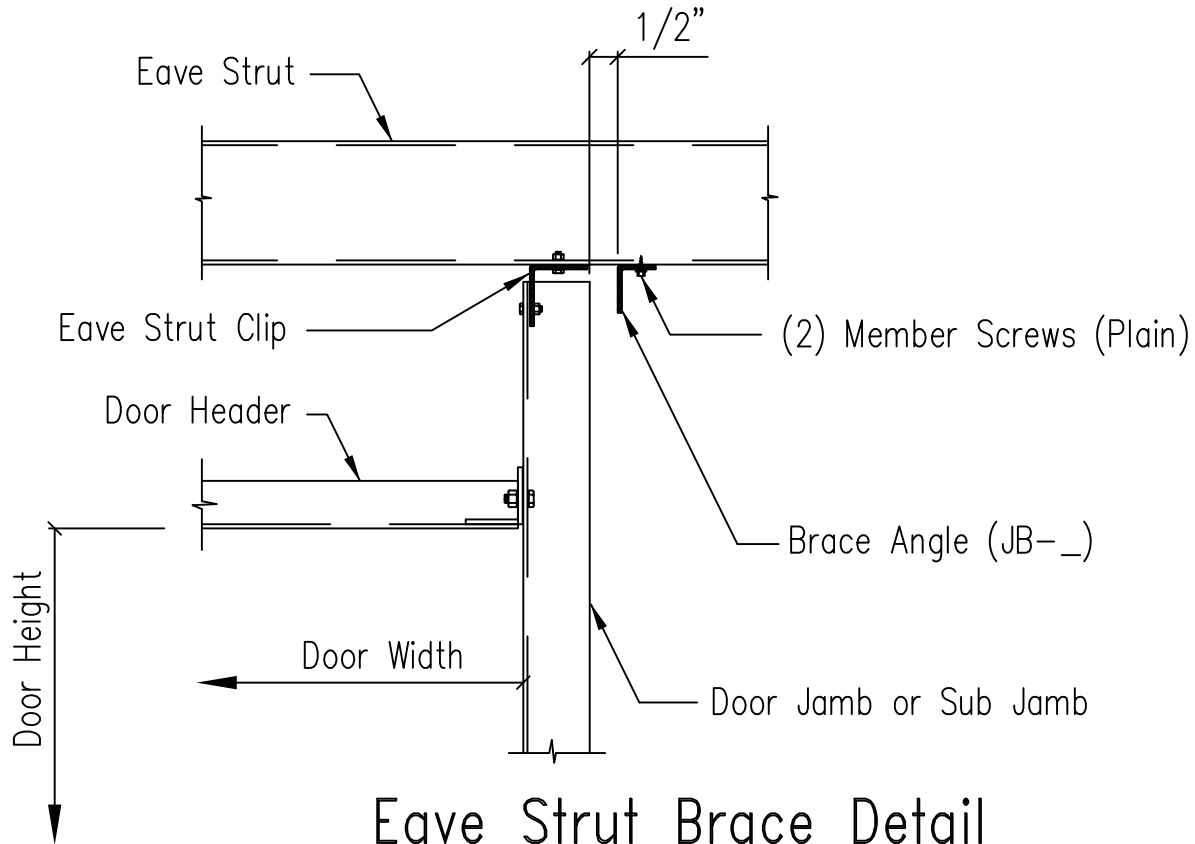
Eave Strut Brace Detail

Framed Opening Jamb Brace Angle Detail

DRAWING NO.
SD99



Eave Strut Brace Section



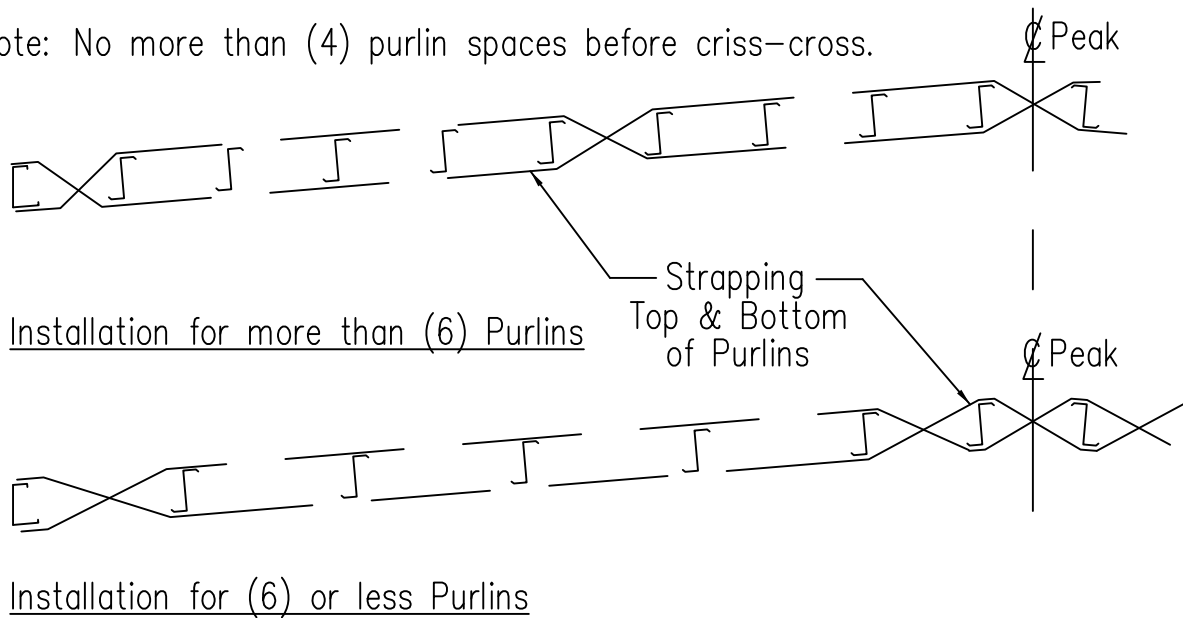
Eave Strut Brace Detail

Framed Opening Jamb Brace Angle Detail
at High Side

DRAWING NO.

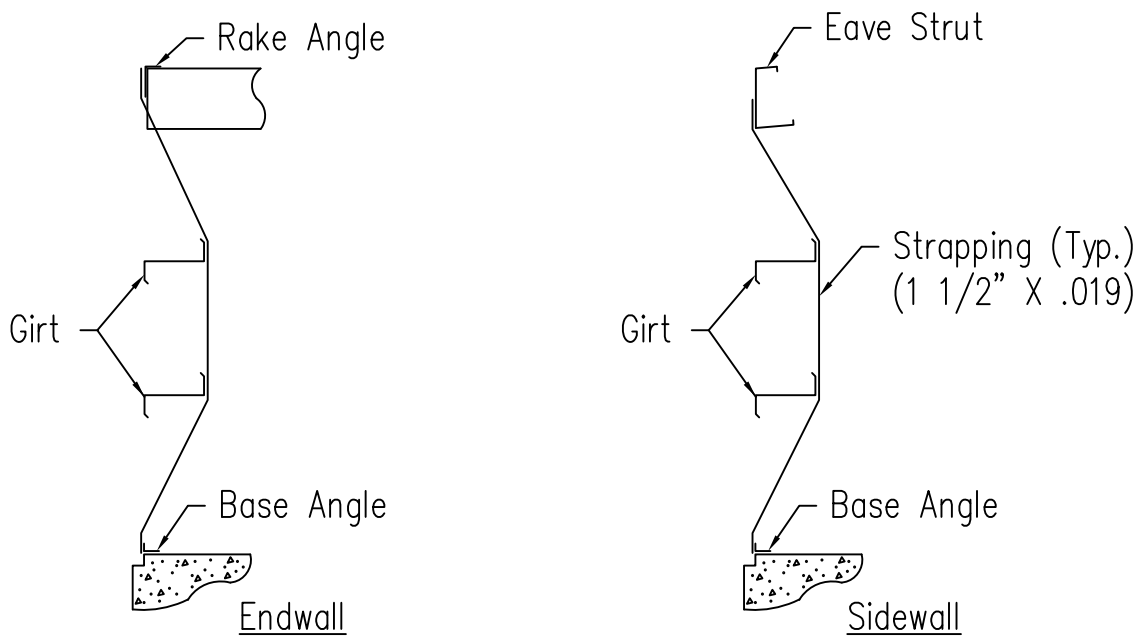
SD100

Note: No more than (4) purlin spaces before criss-cross.



Roof Uplift Strap Installation
(Refer to Roof Plan for Locations)

- Note: 1) Attach straps w/#10-16 x 1" pancake self driller (RF1) at purlins or girts.
2) No criss-cross straps in walls.

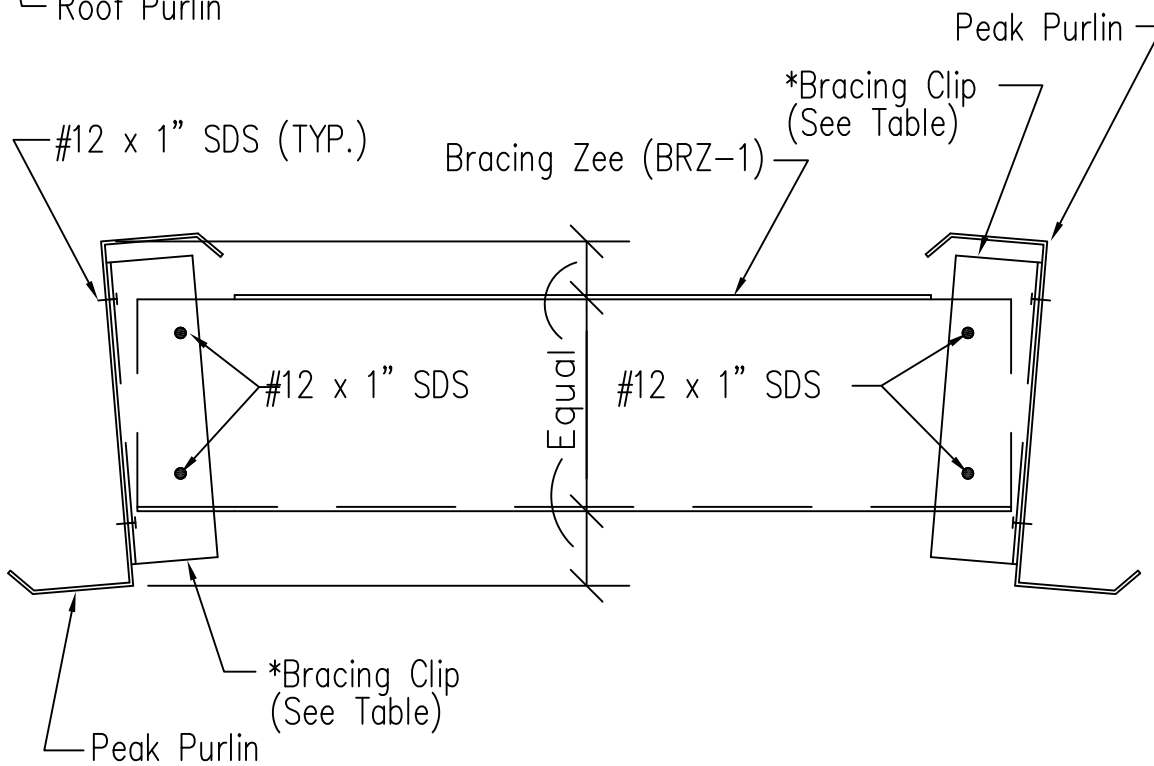
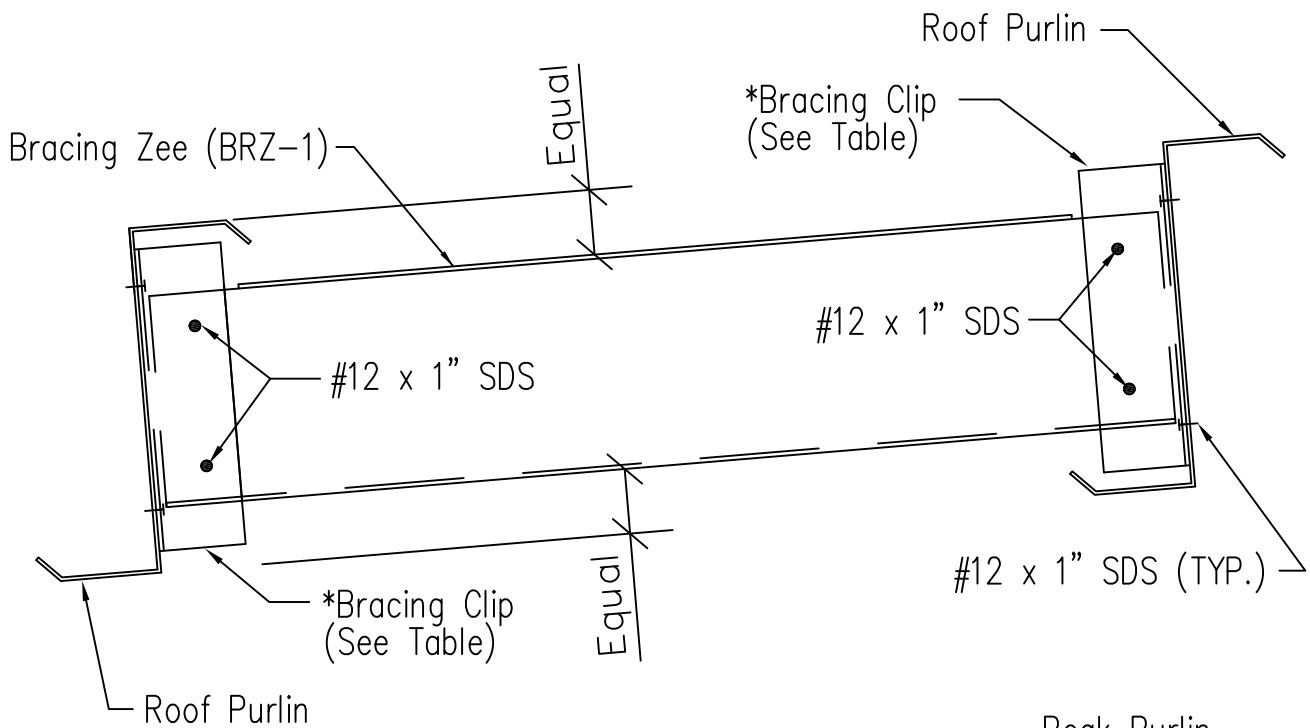


Wall Suction Strap Installation
(Refer to Wall Elevations for Location)

Roof Uplift and Wall Suction Strap Details

DRAWING NO.

SD102

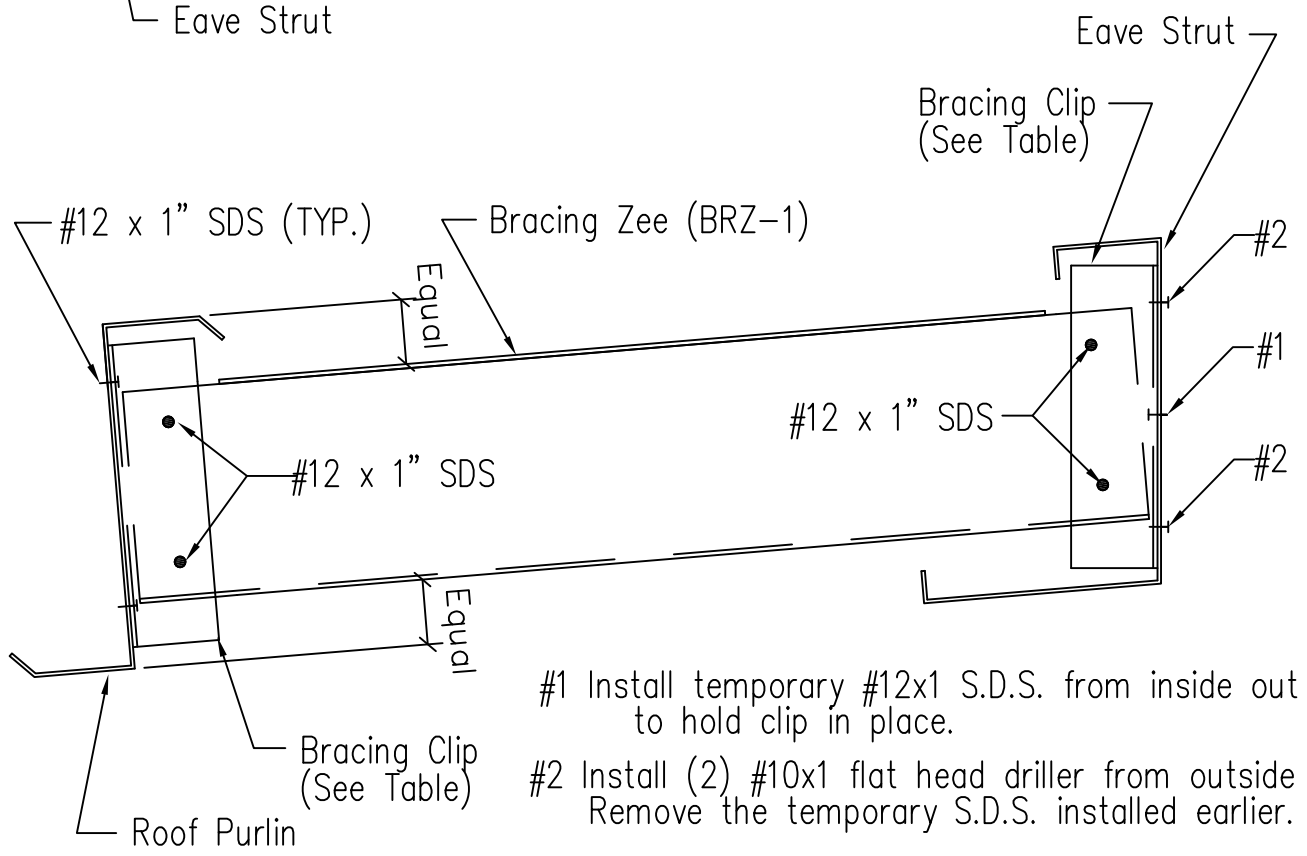
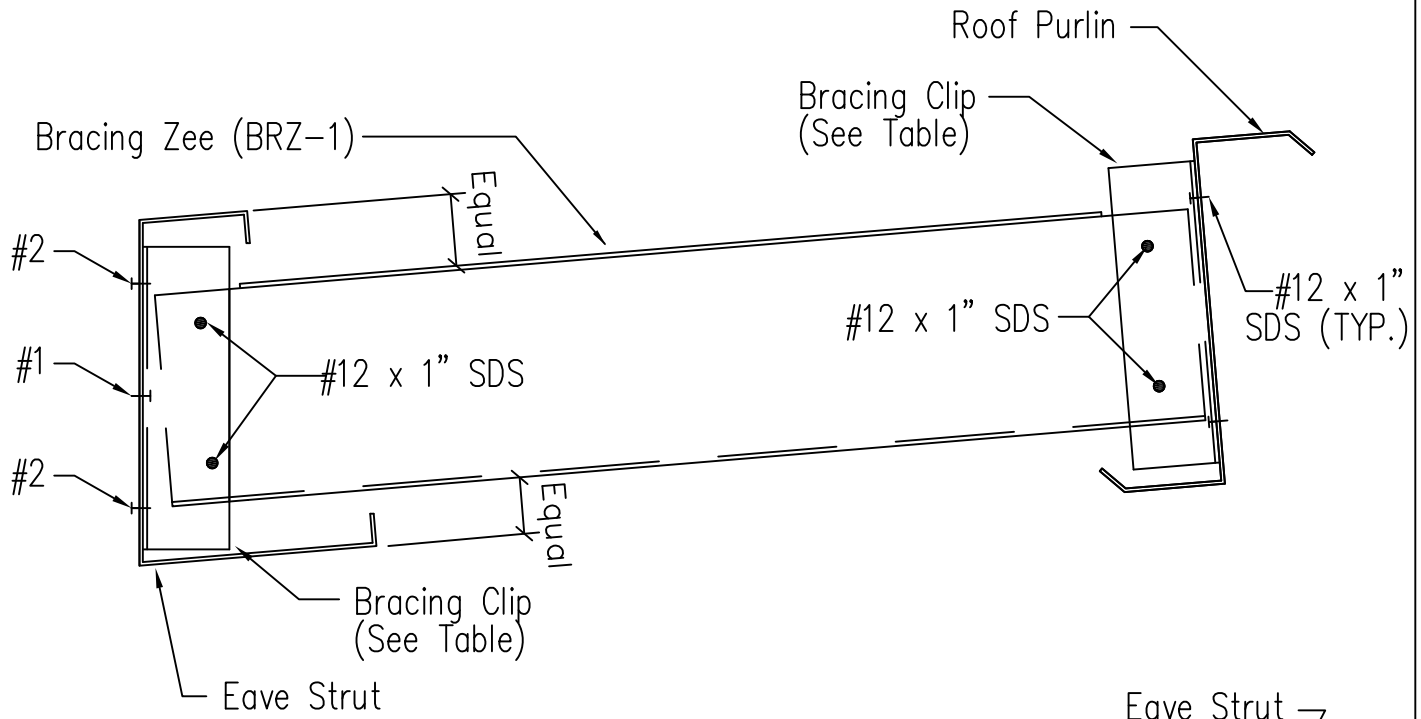


PURLIN DEPTH	BRACING CLIP	Note: Bracing Clip locator buttons are to be placed in holes pre-drilled in purlins.
8"	BRC-7	
10"	BRC-9	
12"	BRC-11	

Intermediate Purlin Bridging

DRAWING NO.

SD105

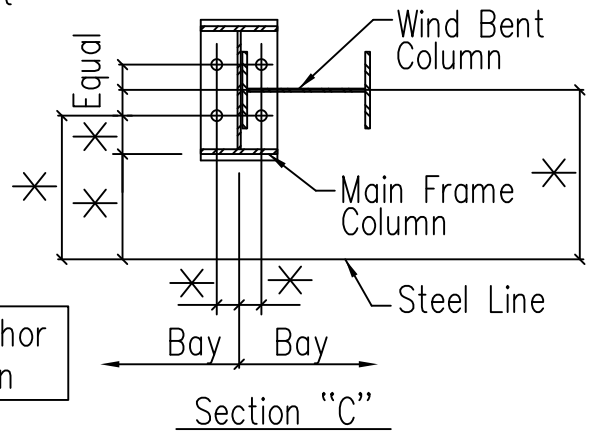
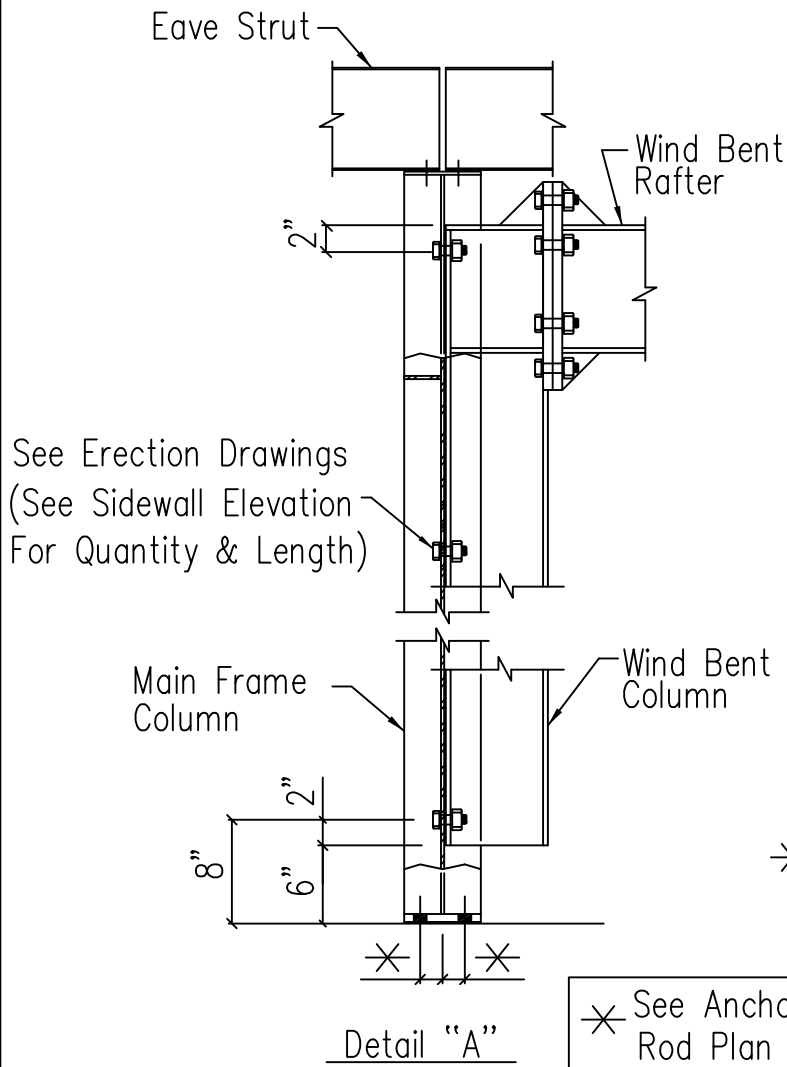
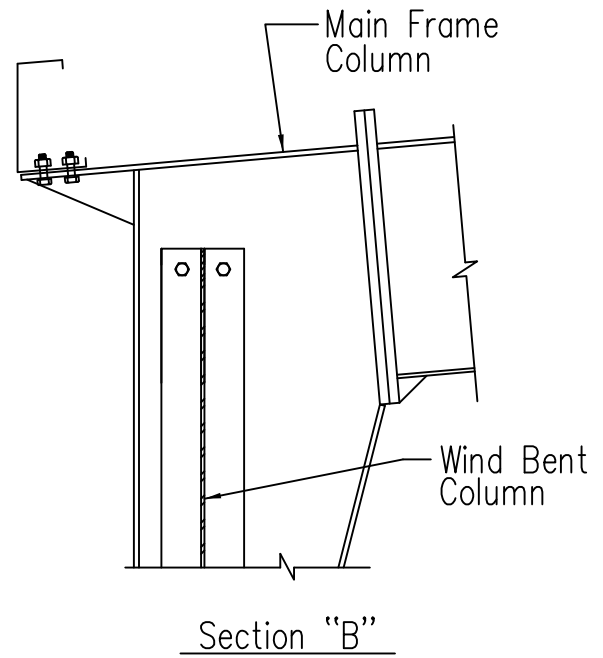
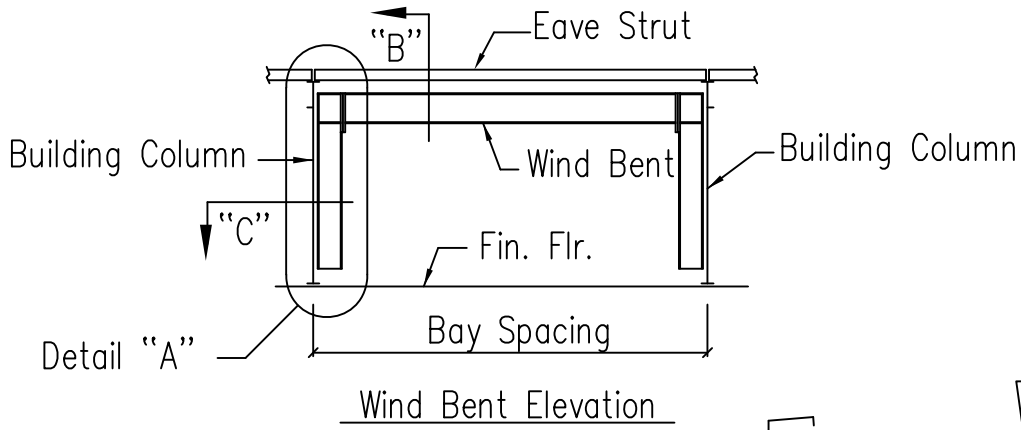


- #1 Install temporary #12x1 S.D.S. from inside out to hold clip in place.
- #2 Install (2) #10x1 flat head driller from outside in. Remove the temporary S.D.S. installed earlier.

PURLIN DEPTH	BRACING CLIP	Note: Bracing Clip locator buttons are to be placed in holes pre-drilled in purlins. These locators are not to be used on the eave strut webs.
8"	BRC-7	
10"	BRC-9	
12"	BRC-11	

Eave Bridging

DRAWING NO.
SD106



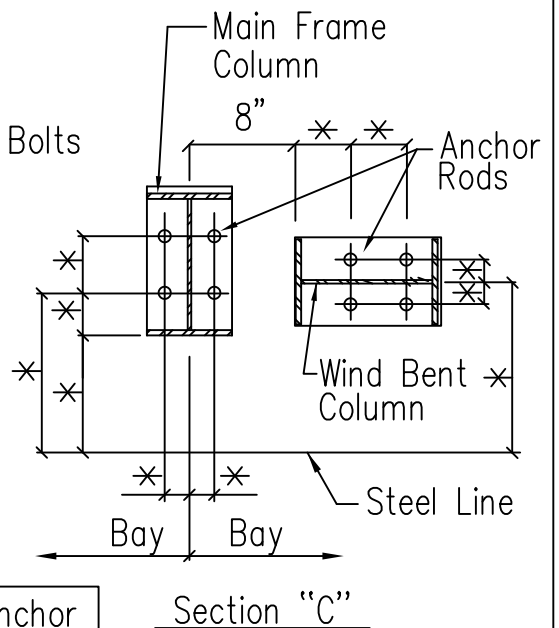
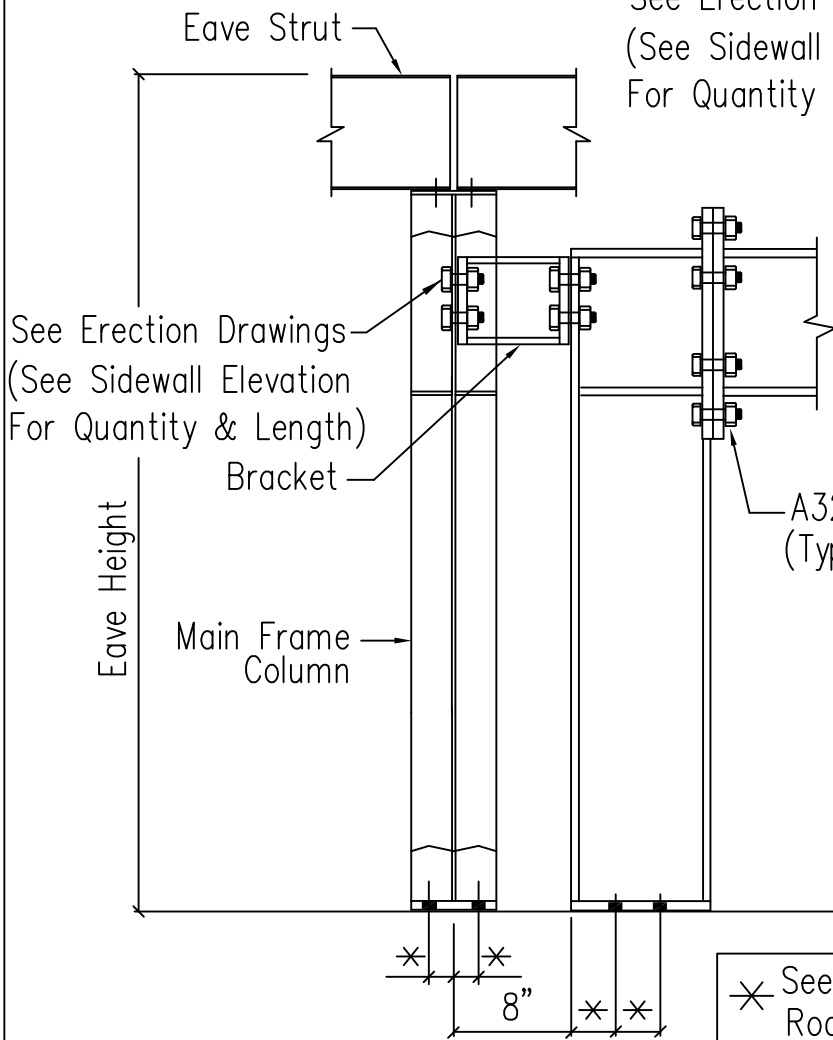
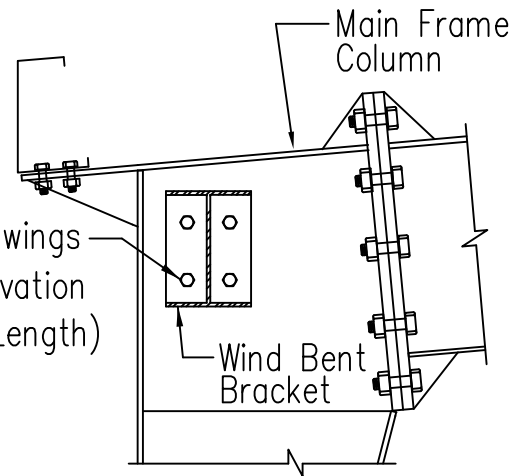
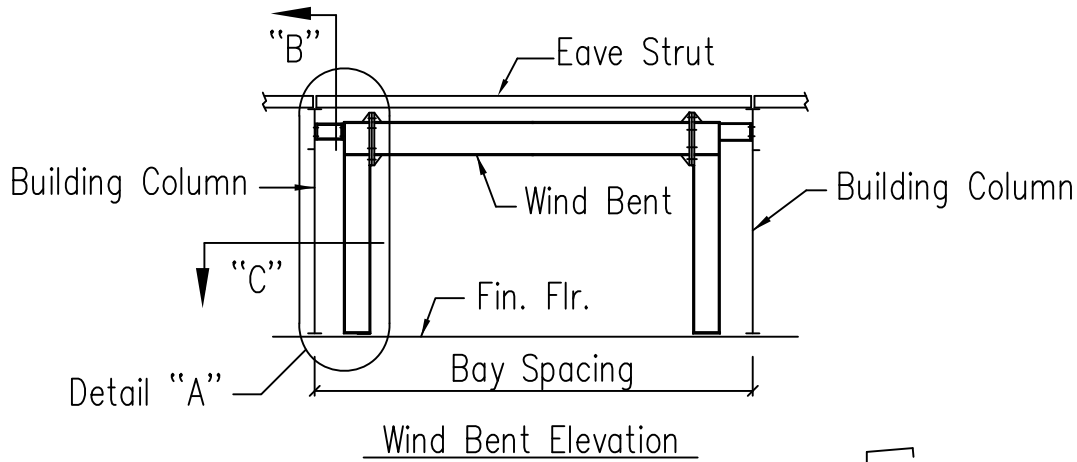
✱ See Anchor Rod Plan

Flush Wind Bent (Floating)

Created On: 5/25/12
Revised On: 7/21/14

DRAWING NO.

SD150

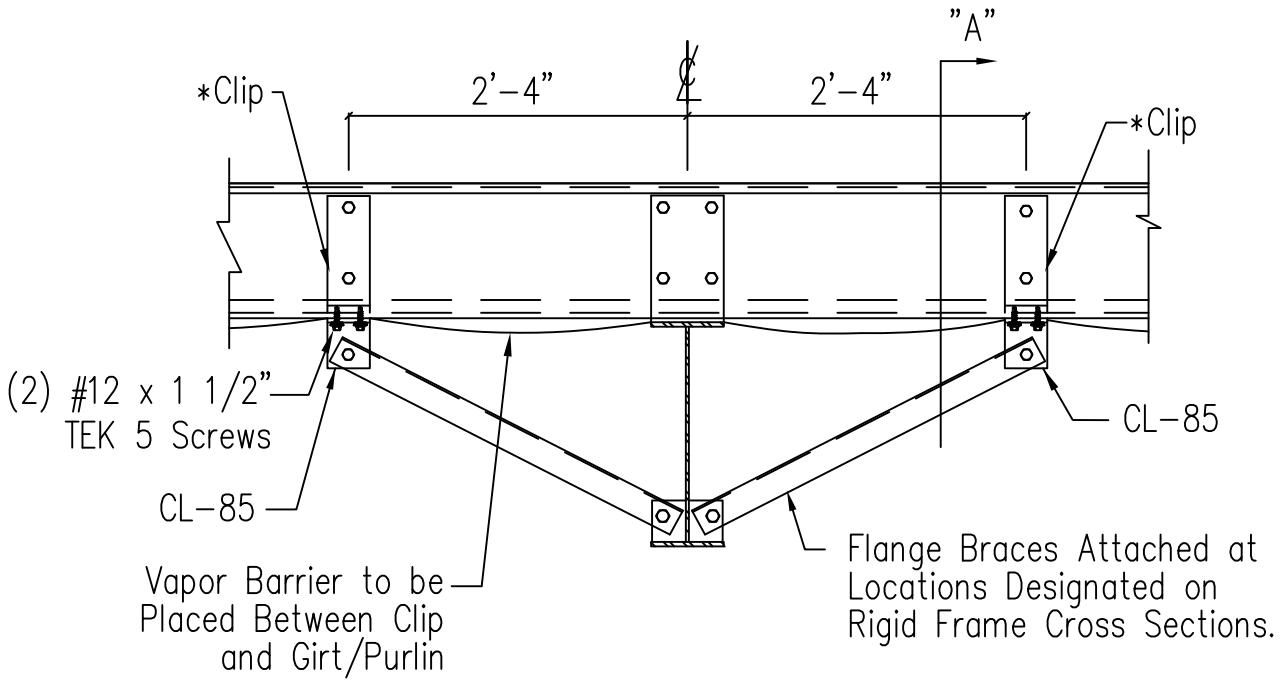


Flush Wind Bent

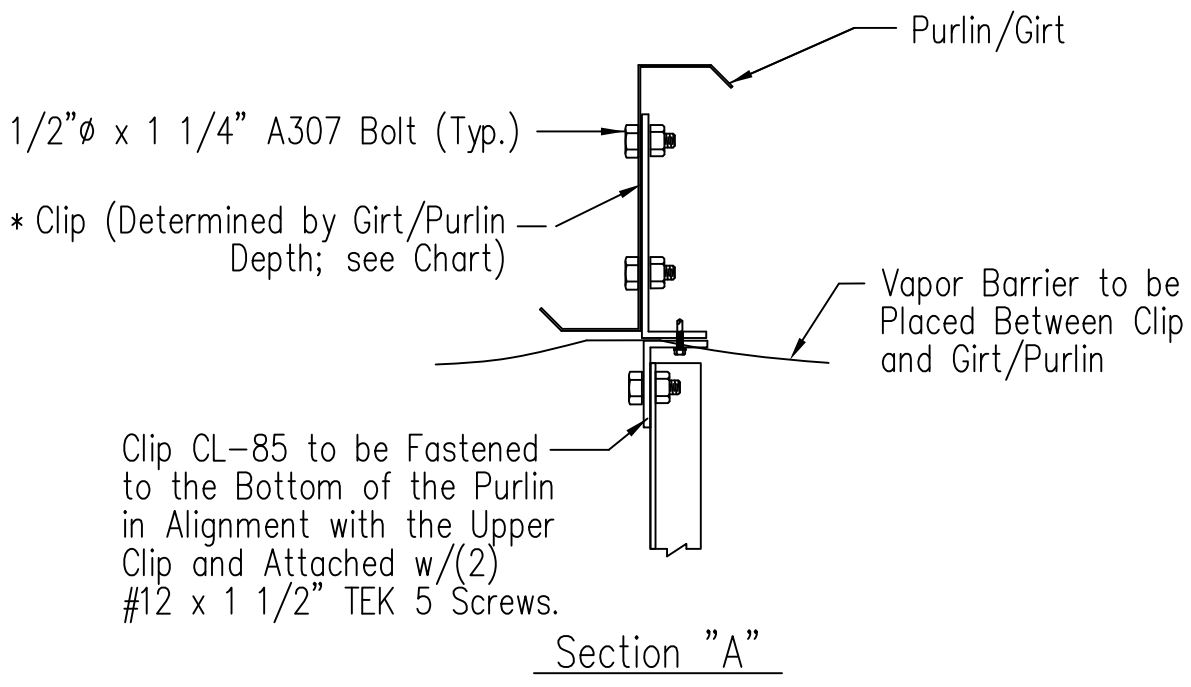
Created On: 5/25/12
Revised On: 7/21/14

DRAWING NO.

SD151

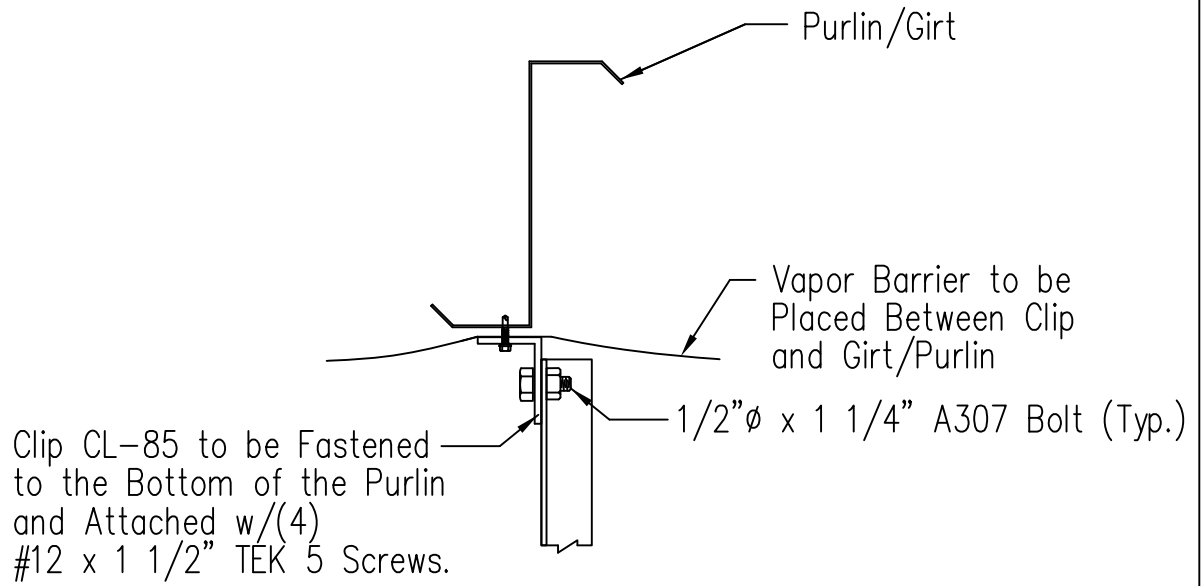
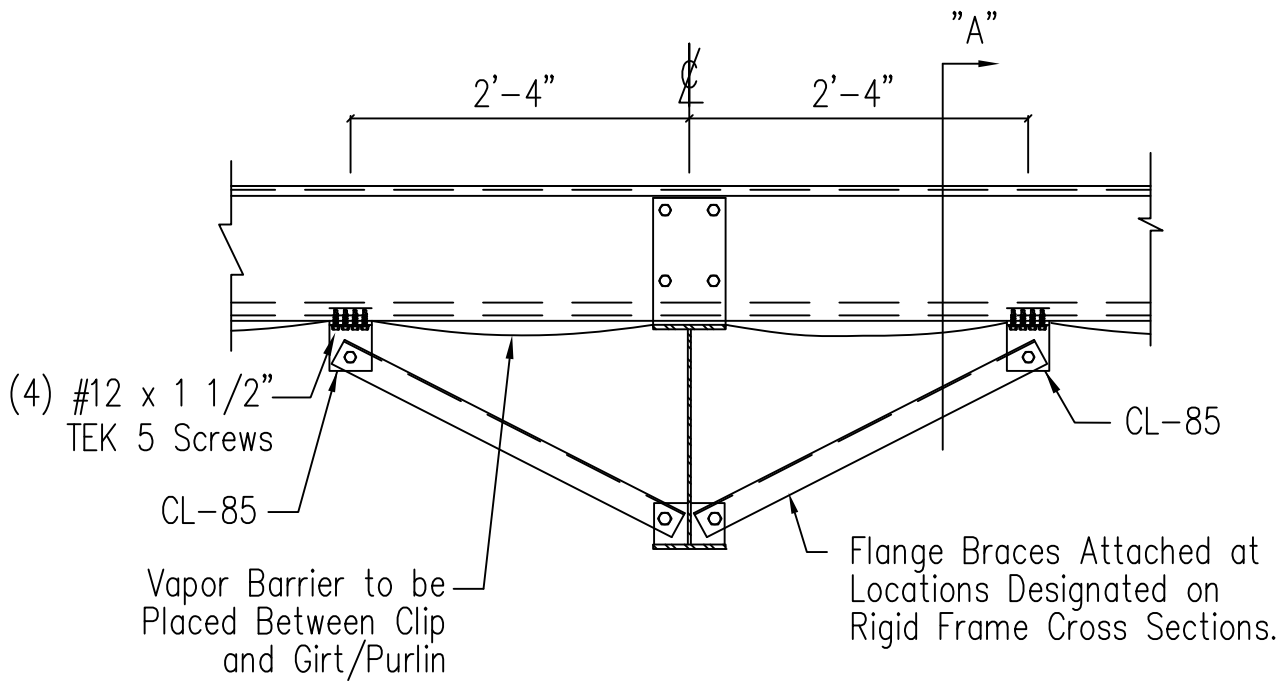


*Clip Table	
8" Girt/Purlin	CL-86
10" Girt/Purlin	CL-87
12" Girt/Purlin	CL-88



Note: All connection bolts are 1/2" x 1 1/4" machine bolts unless noted.

<p style="text-align: center;"><u>Interior Girt/Purlin Flange Brace Attachment for Insulation</u></p>	<p>DRAWING NO.</p> <p style="font-size: 24pt; font-weight: bold;">SD161</p>
<p>Revised On : 01/04/18 Created On: 8/26/11</p>	



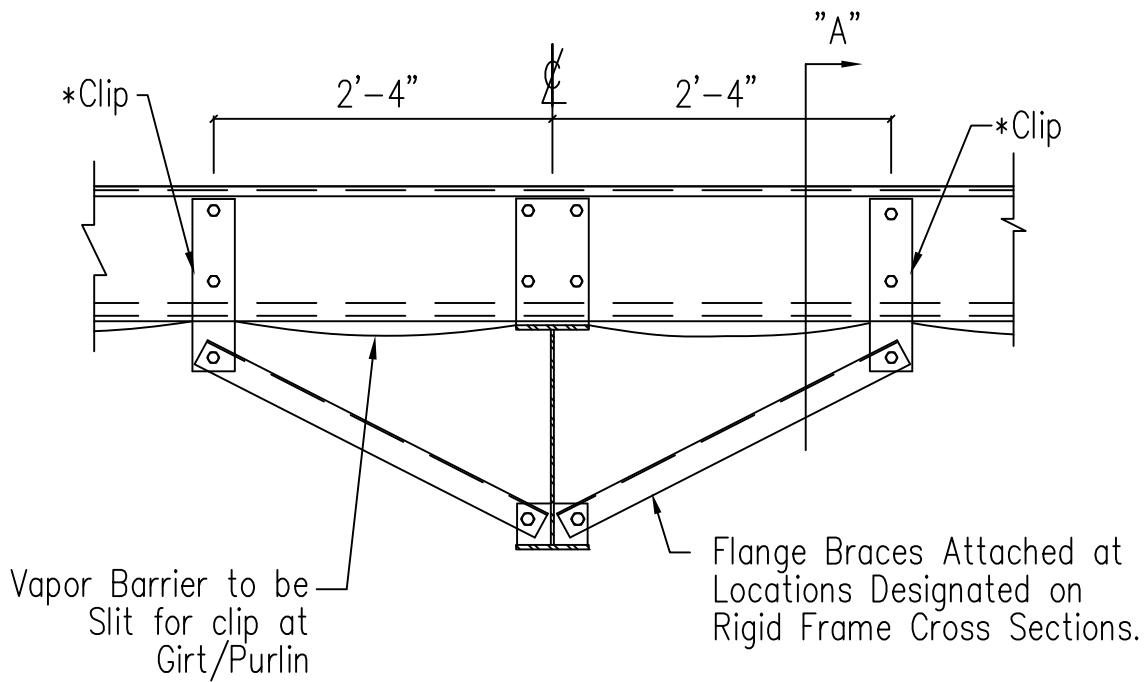
Section "A"

Note: All connection bolts are 1/2" x 1 1/4" machine bolts unless noted.

Interior Girt/Purlin Flange Brace Attachment for Insulation

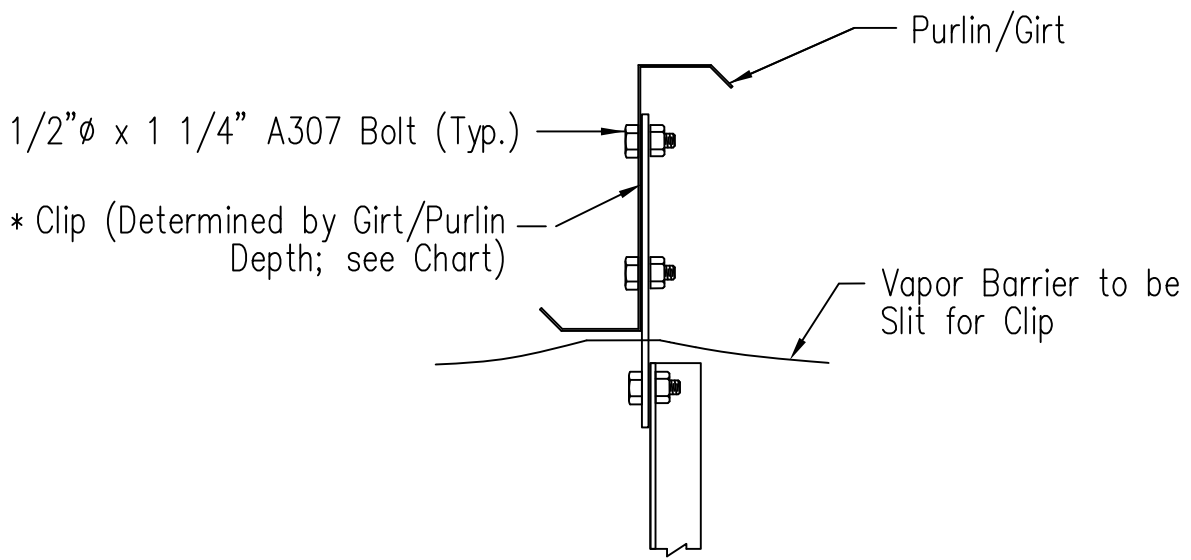
DRAWING NO.

SD162



ERECTOR NOTE:
When installing liner panels
precut slits in liner panel
before hanging overhead.

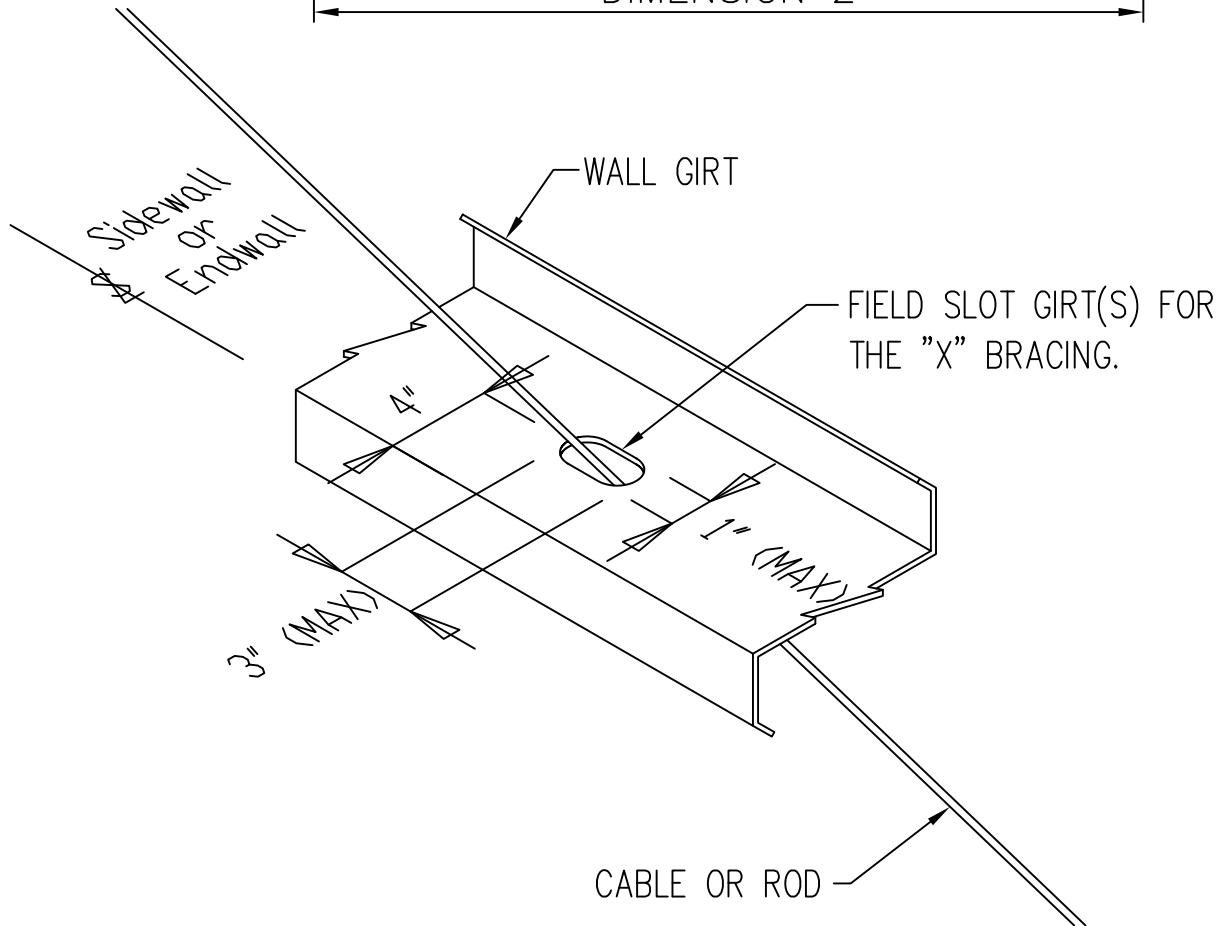
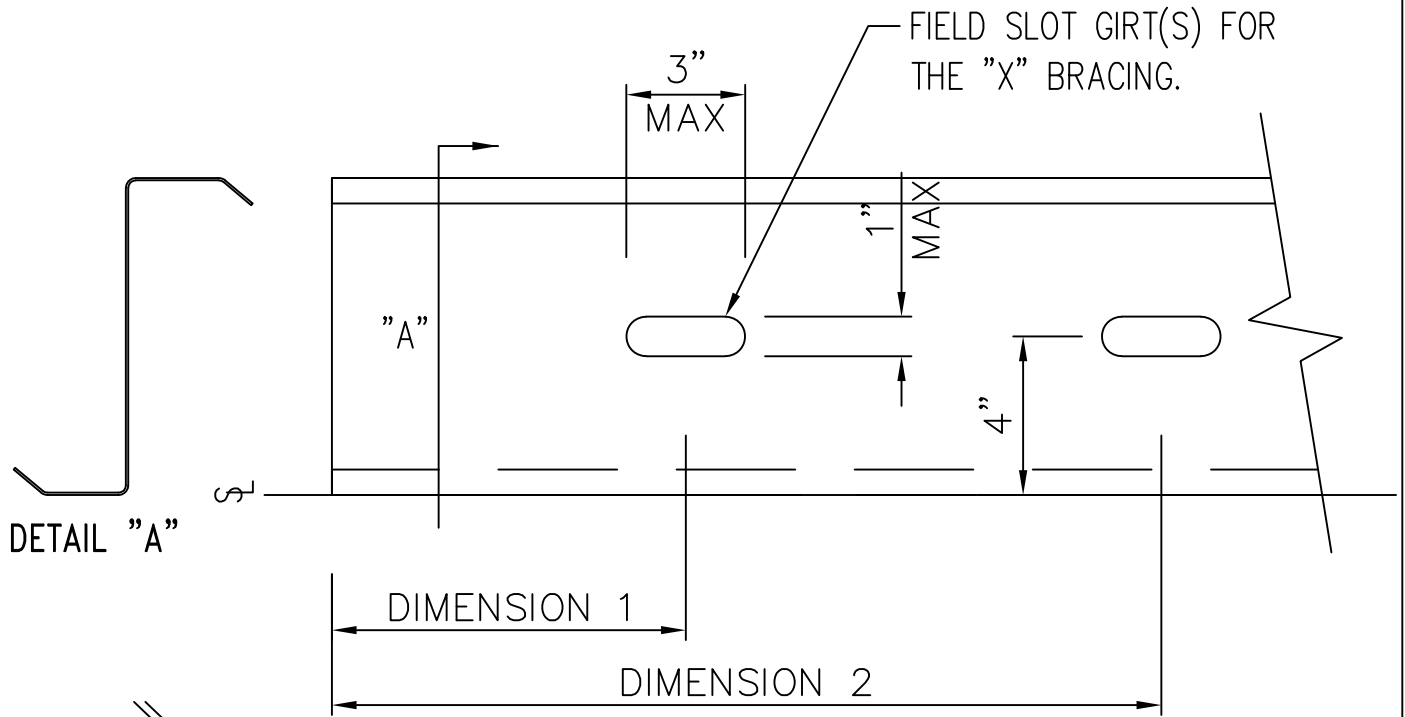
*Clip Table	
8" Girt/Purlin	CL-22
10" Girt/Purlin	CL-24
12" Girt/Purlin	CL-34



Section "A"

Note: All connection bolts are 1/2" x 1 1/4" machine bolts unless noted.

<p style="text-align: center;"><u>Interior Girt/Purlin Flange Brace Attachment for Insulation</u></p>	<p>DRAWING NO.</p> <p style="font-size: 2em; font-weight: bold;">SD163</p>
<p>Revised On : 02/08/24 Created On: 8/26/11</p>	



NOTE: FIELD SLOT THE GIRT USING THE CORRESPONDING DIMENSIONS AS SHOWN ON THE "FIELD WORK TABLE" ON THE WALL ELEVATION.

Field Work Slotting for Bracing

DRAWING NO.

SD202