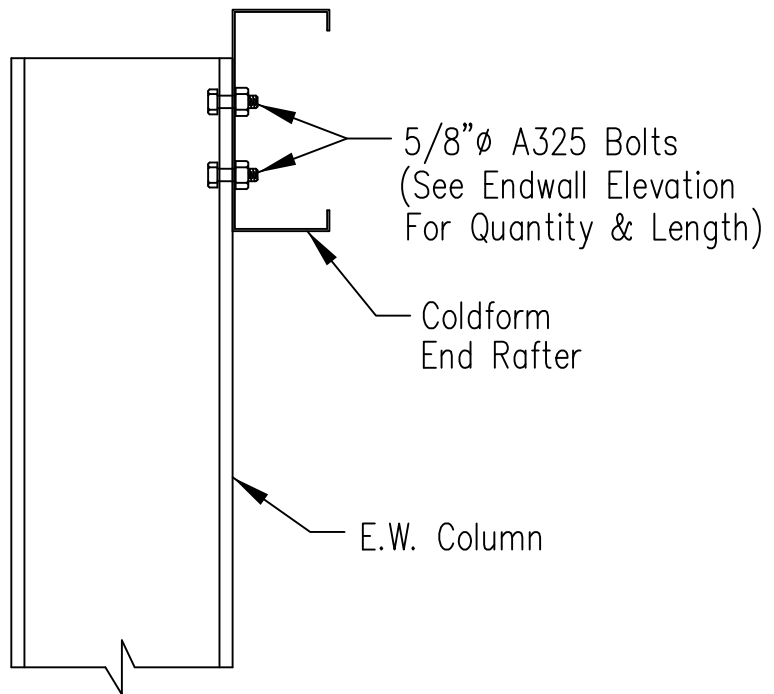
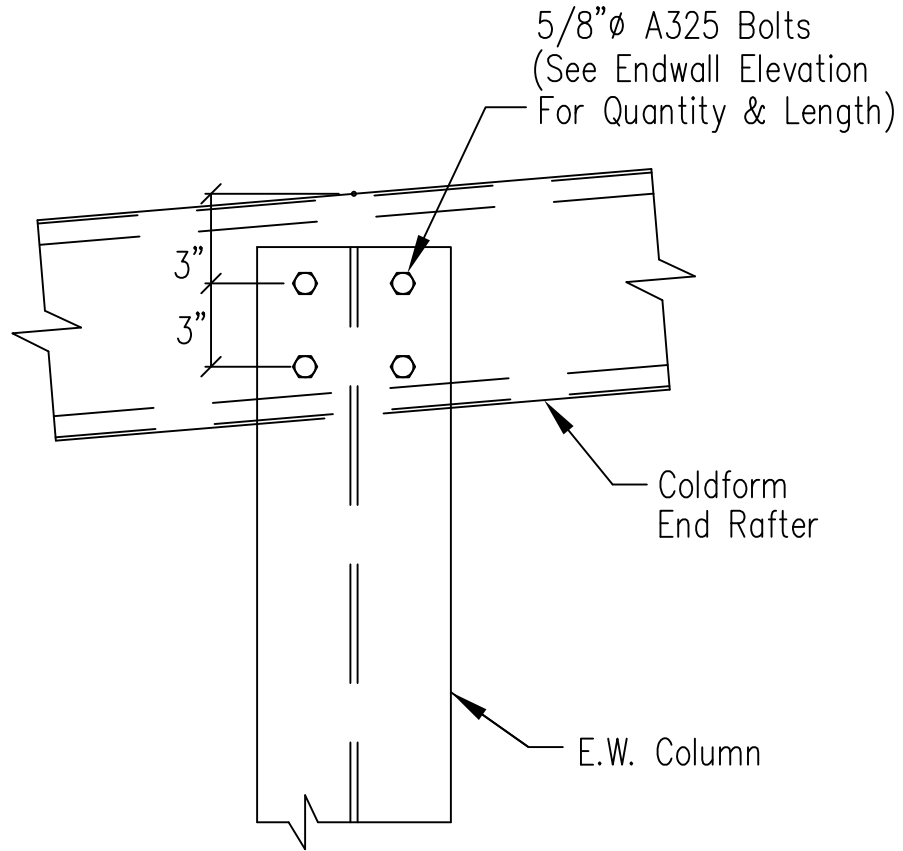


Cold Form Column to Cold Form Rafter

DRAWING NO.

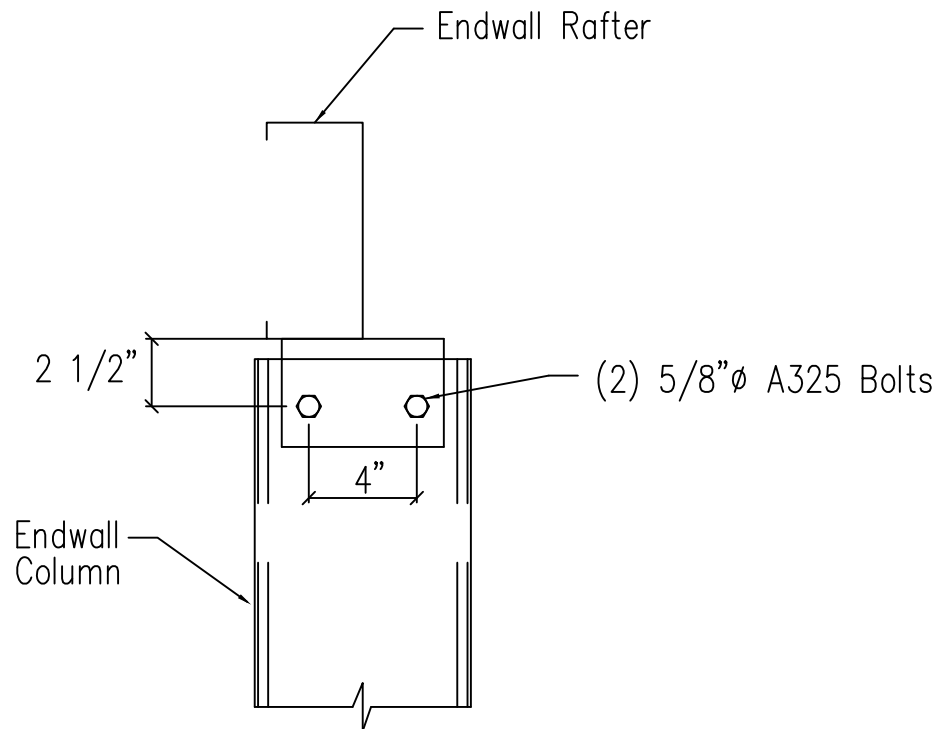
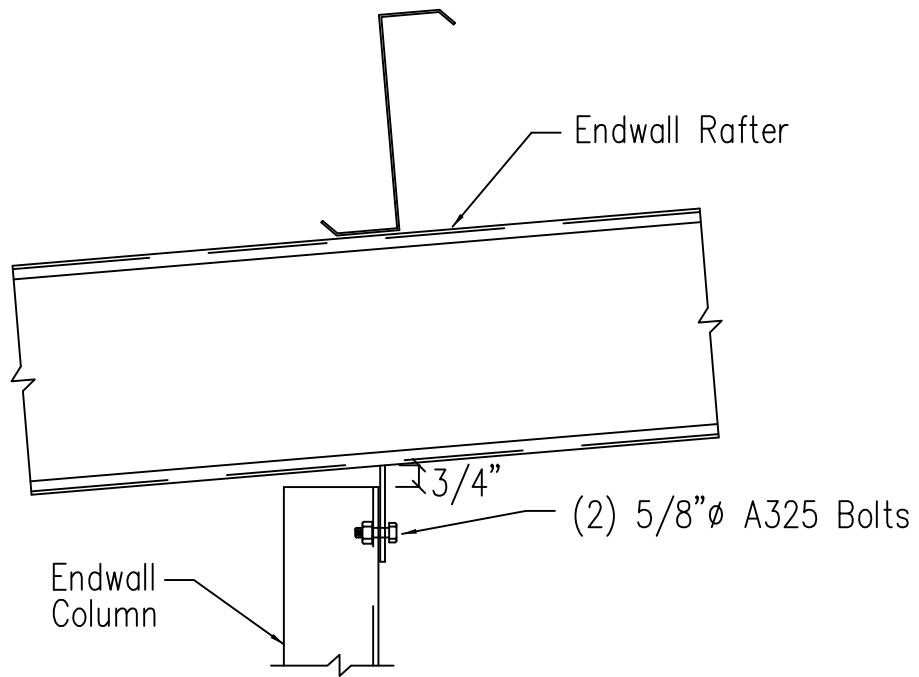
SD2



Hot Rolled Column to Cold Form Rafter

DRAWING NO.

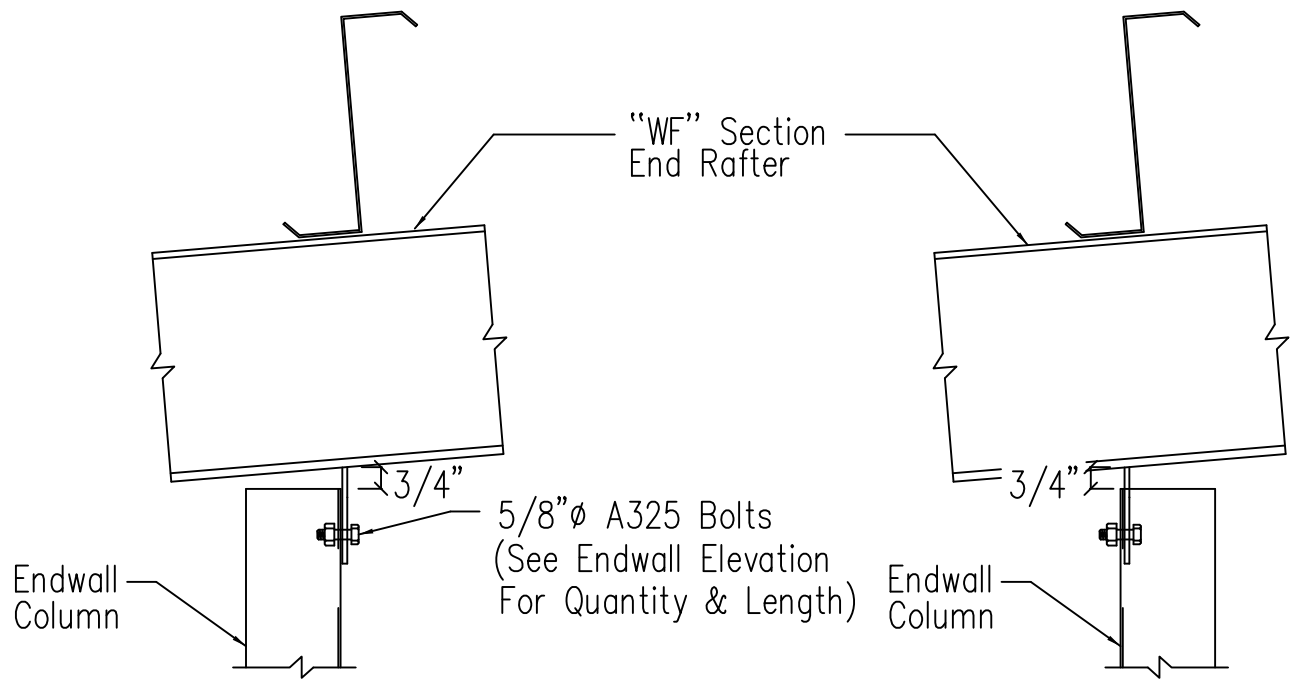
SD3



Cold Form Column to Cold Form Rafter

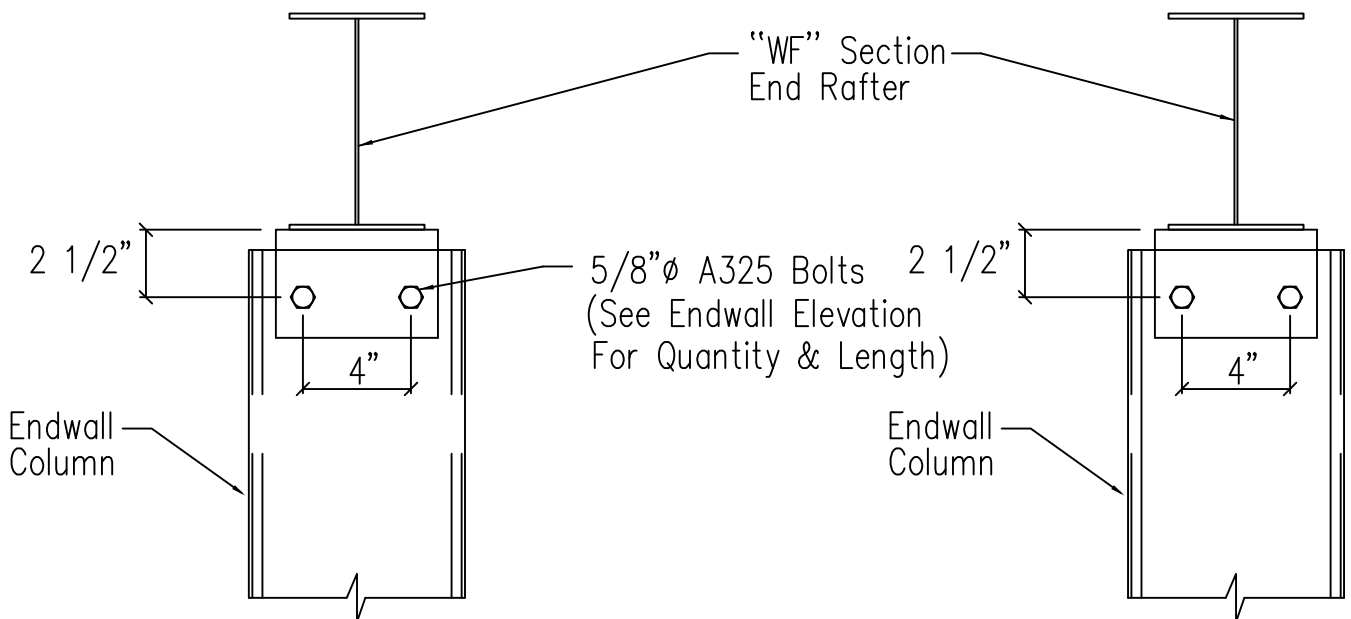
DRAWING NO.

SD4



Cee Endwall Column
Toes Toward Downslope

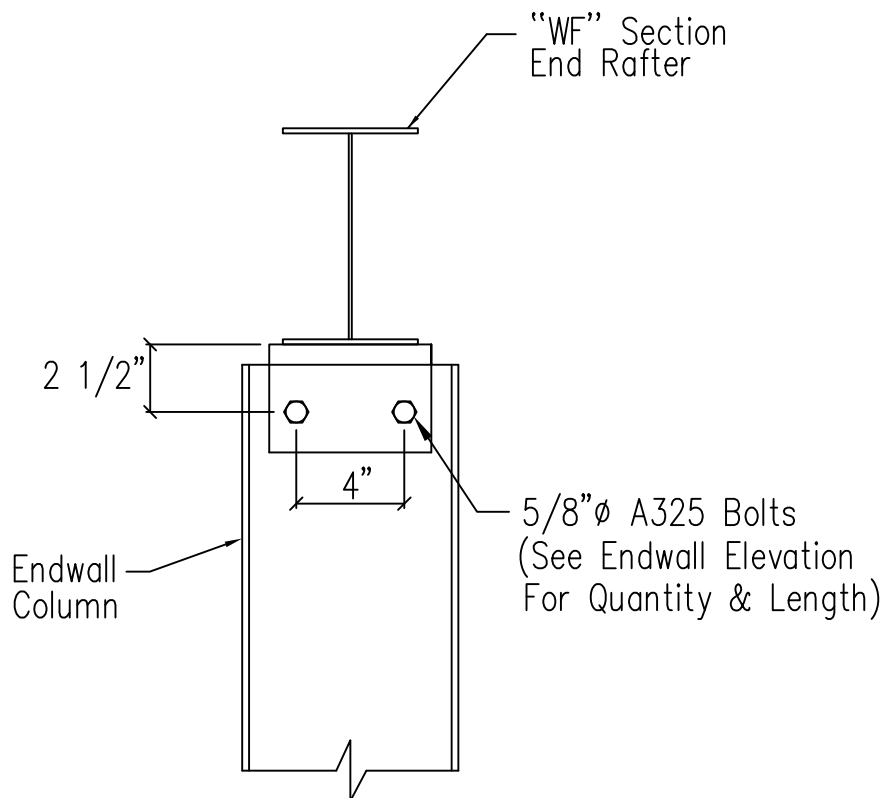
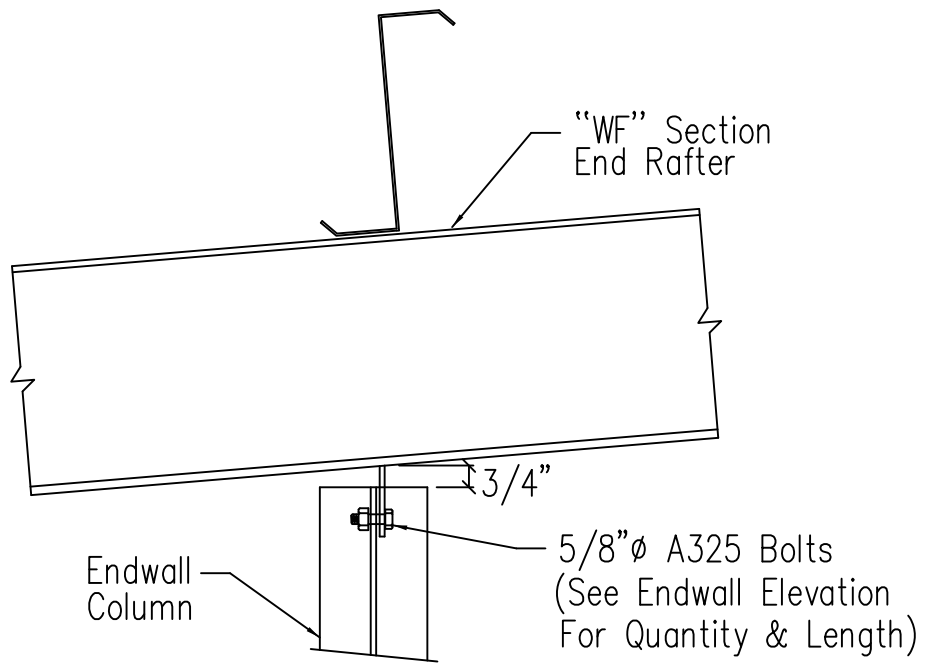
Cee Endwall Column
Toes Toward Upslope



Cold Form Column to Hot Rolled Rafter

DRAWING NO.

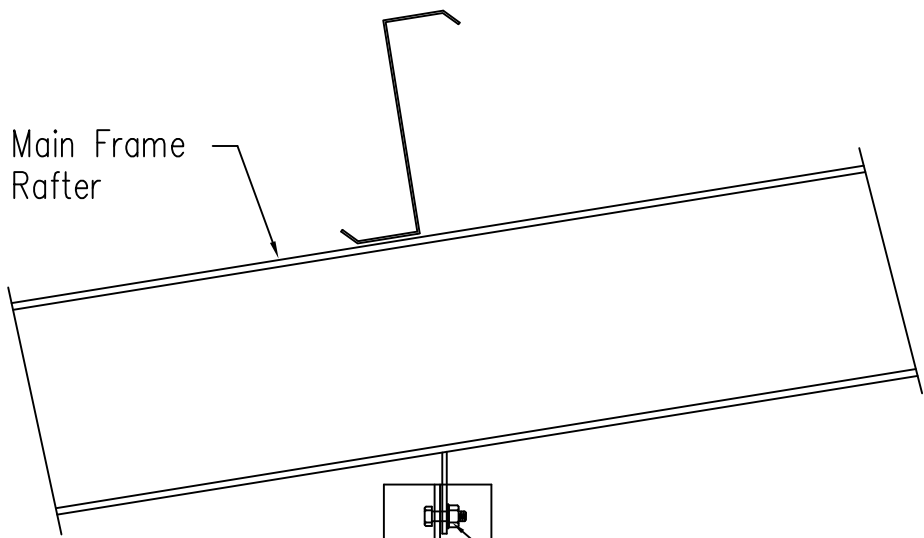
SD6



Hot Rolled Column to Hot Rolled Rafter

DRAWING NO.

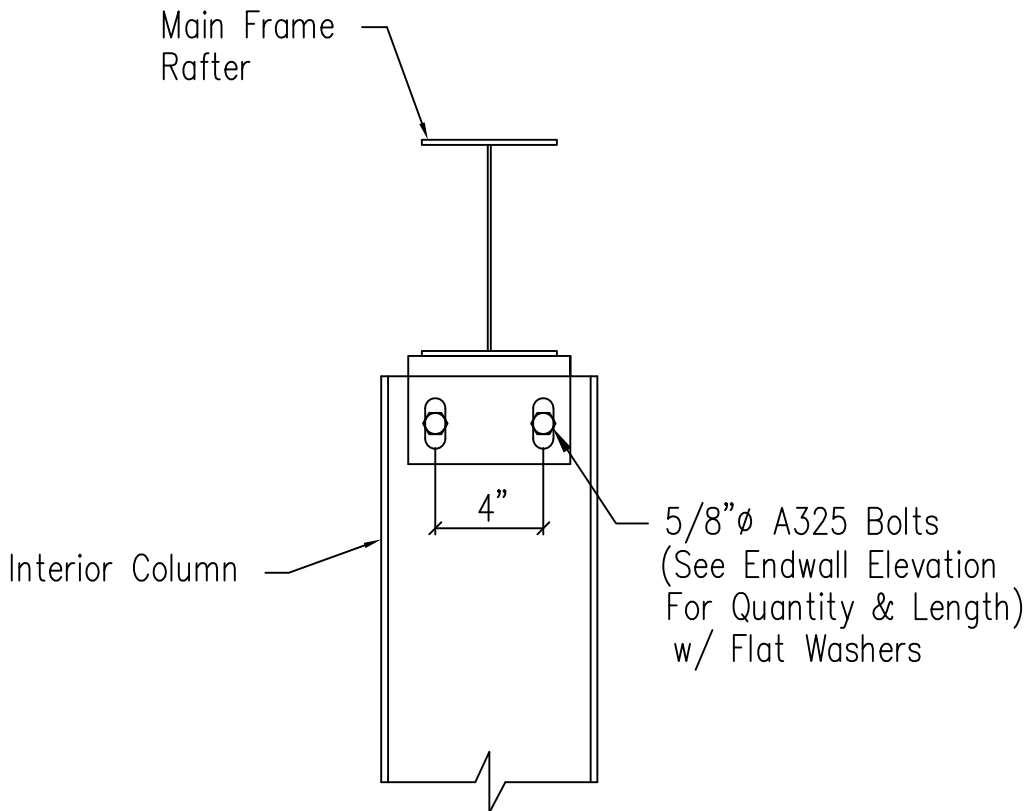
SD7



Main Frame Rafter

Interior Column

5/8" ϕ A325 Bolts
(See Endwall Elevation
For Quantity & Length)
w/ Flat Washers



Main Frame Rafter

Interior Column

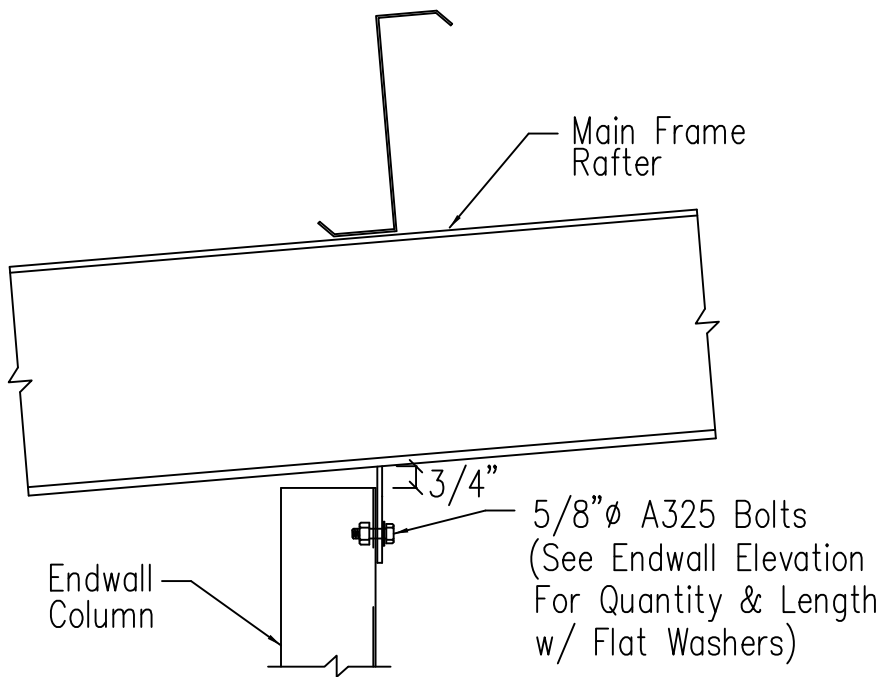
5/8" ϕ A325 Bolts
(See Endwall Elevation
For Quantity & Length)
w/ Flat Washers

4"

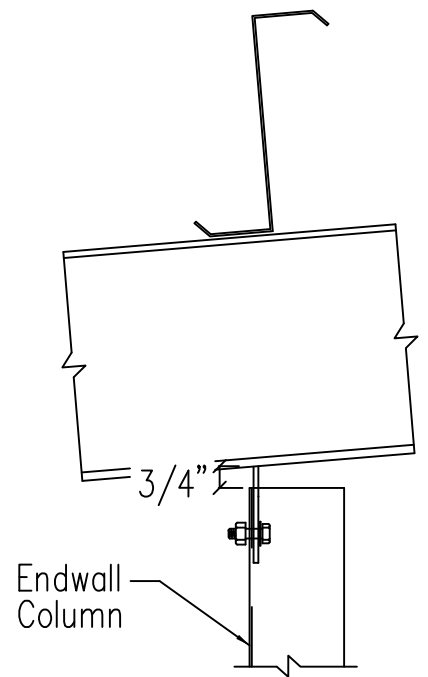
Hot Rolled Column to Main Frame Rafter

DRAWING NO.

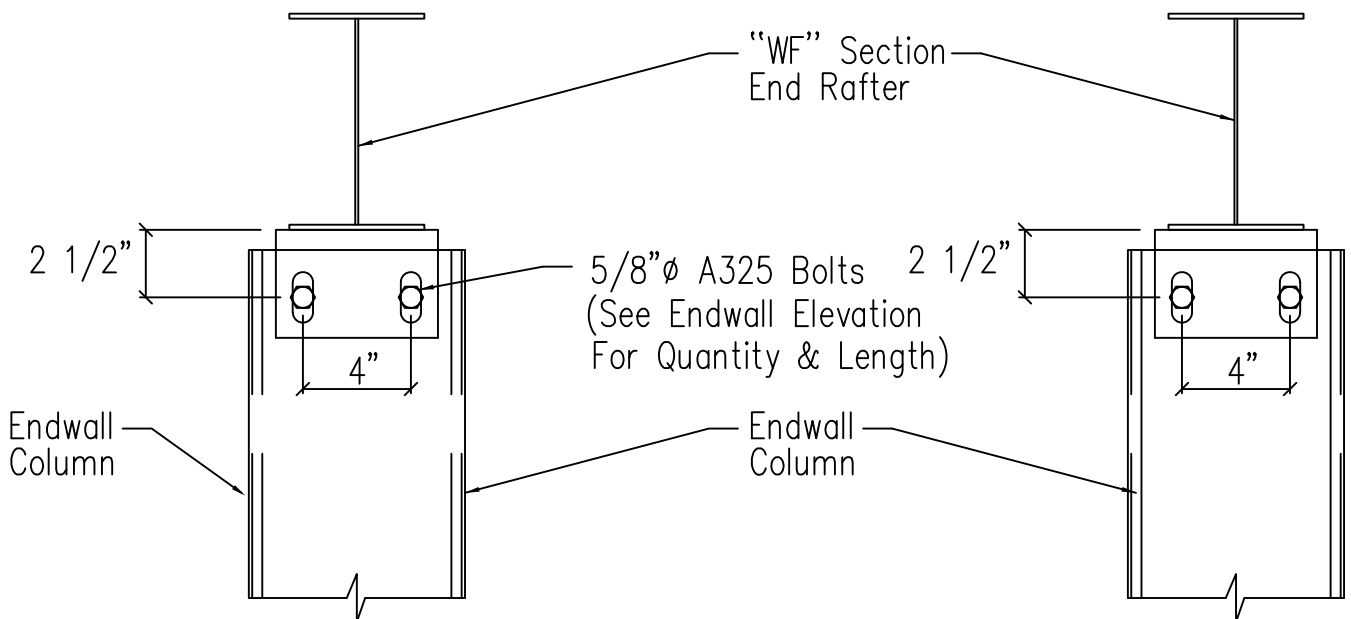
SD8



Cee Endwall Column
Toes Toward Downslope



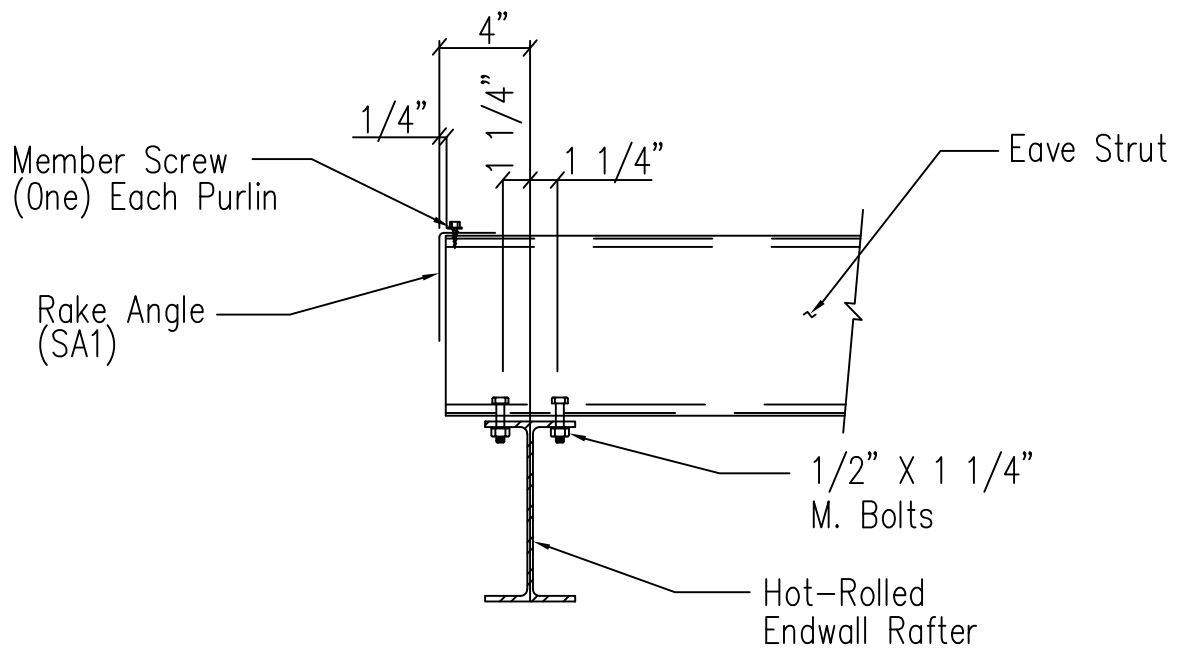
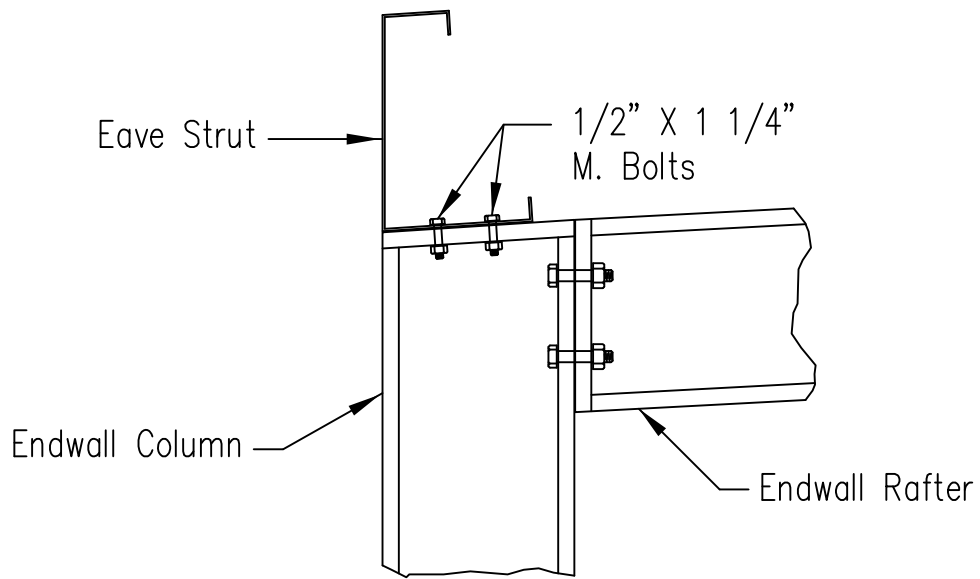
Cee Endwall Column
Toes Toward Upslope



Cold Form Column to Main Frame Rafter

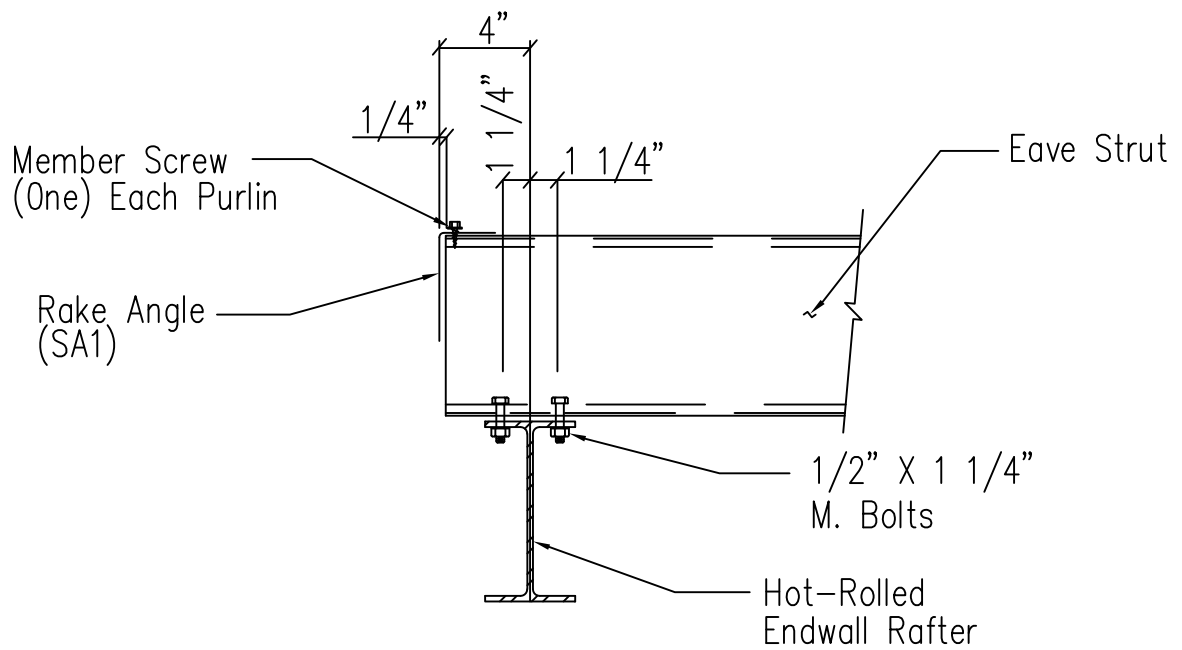
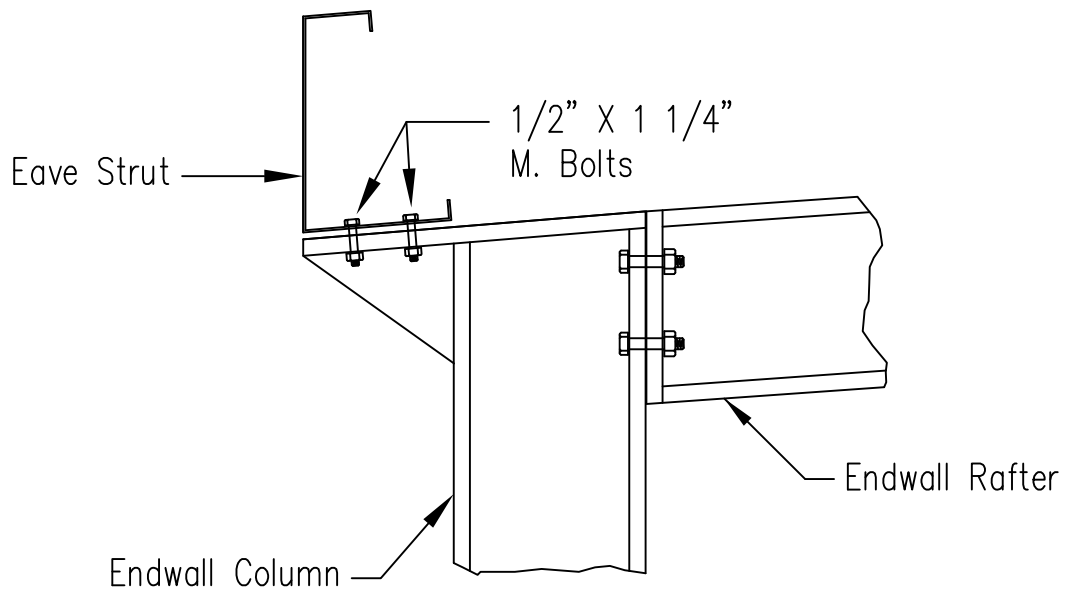
DRAWING NO.

SD8



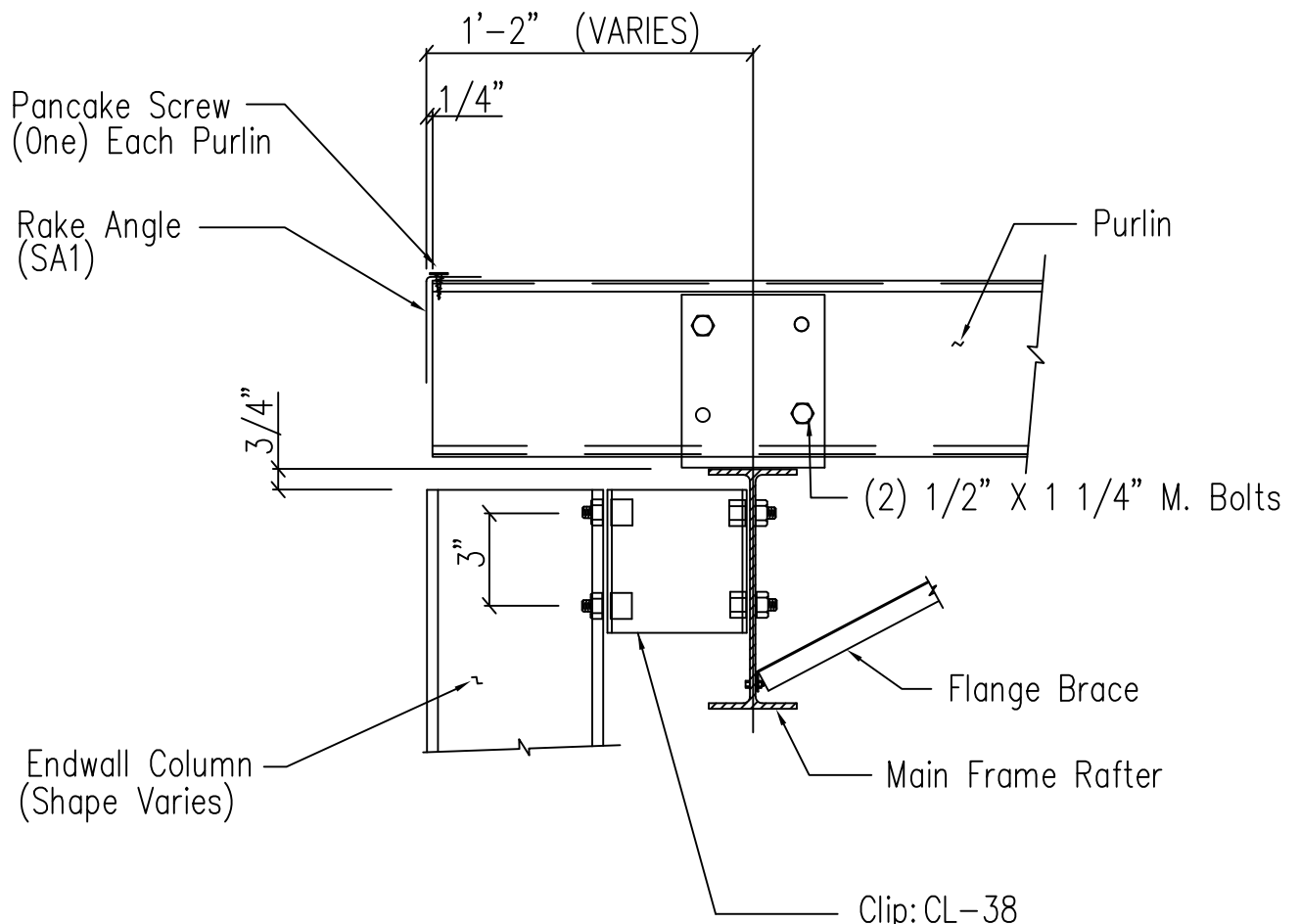
Corner Column Connection WF Rafter/Column
Flush Sidewall

DRAWING NO.
SD12

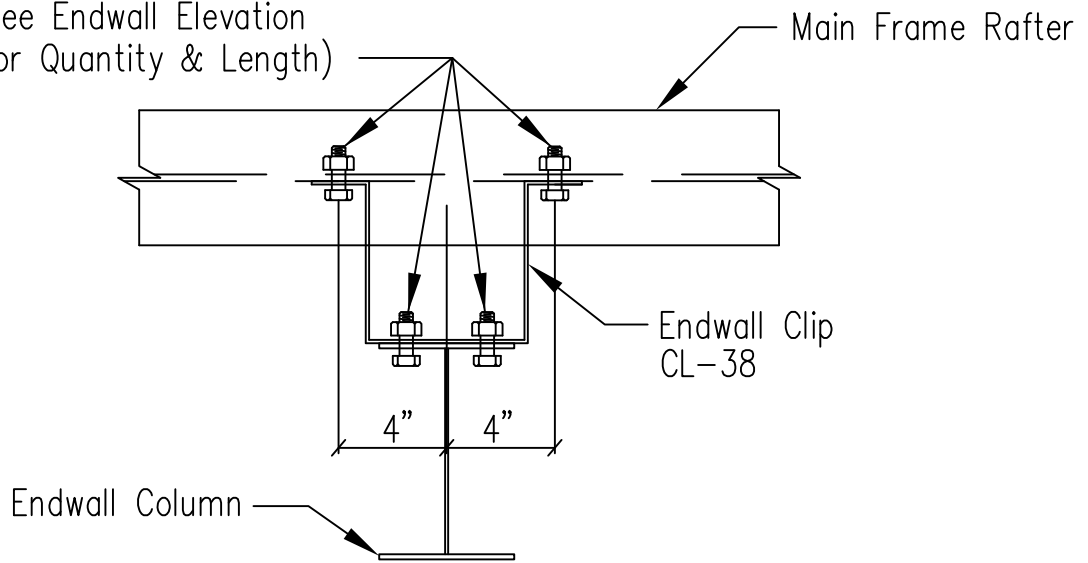


Corner Column Connection WF Rafter/Column
By-Pass Sidewall

DRAWING NO.
SD13



5/8" ϕ A325 Bolts
(See Endwall Elevation
For Quantity & Length)

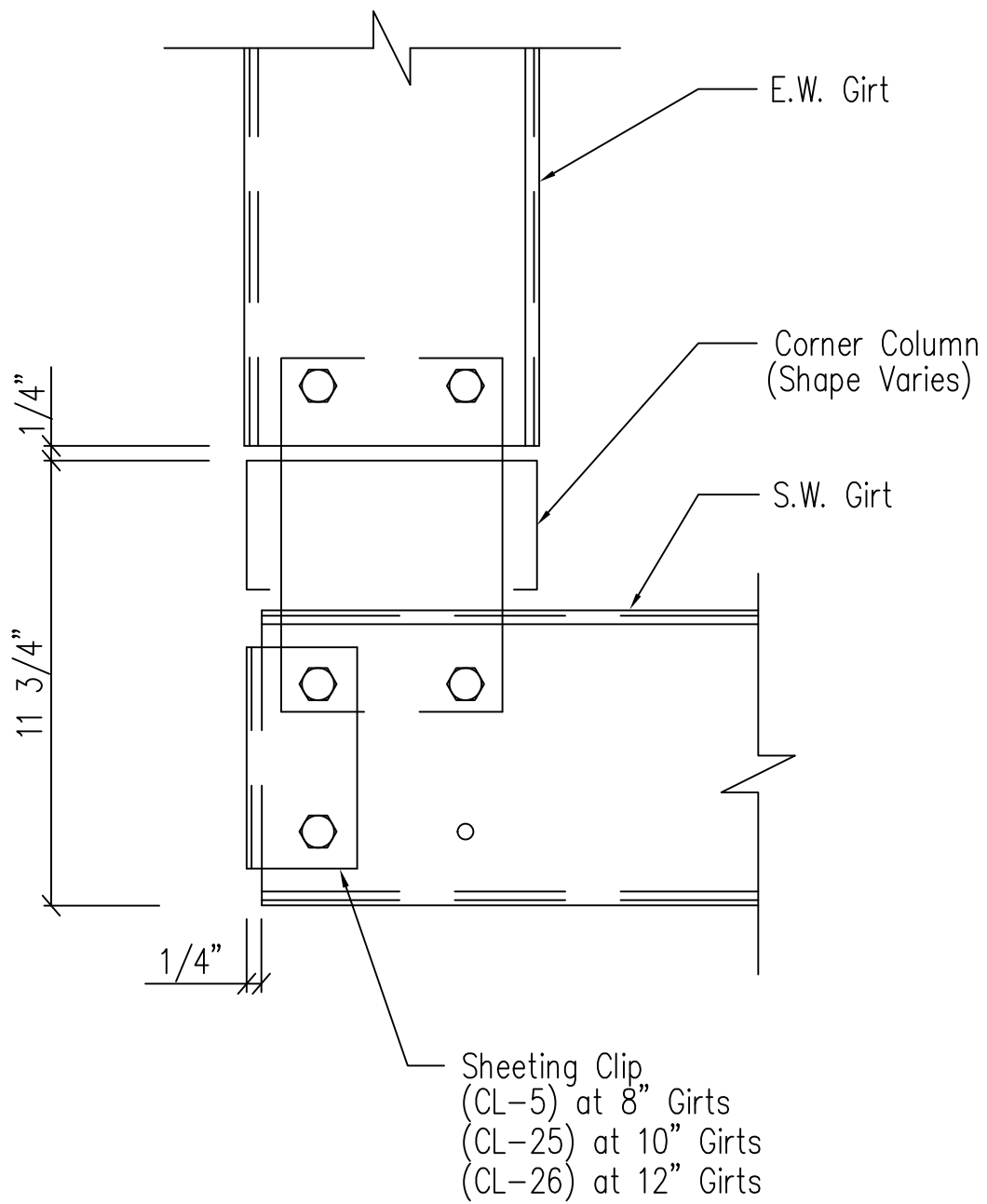


WF Column to Main Frame Rafter Connection

Flush Endwall

DRAWING NO.

SD20

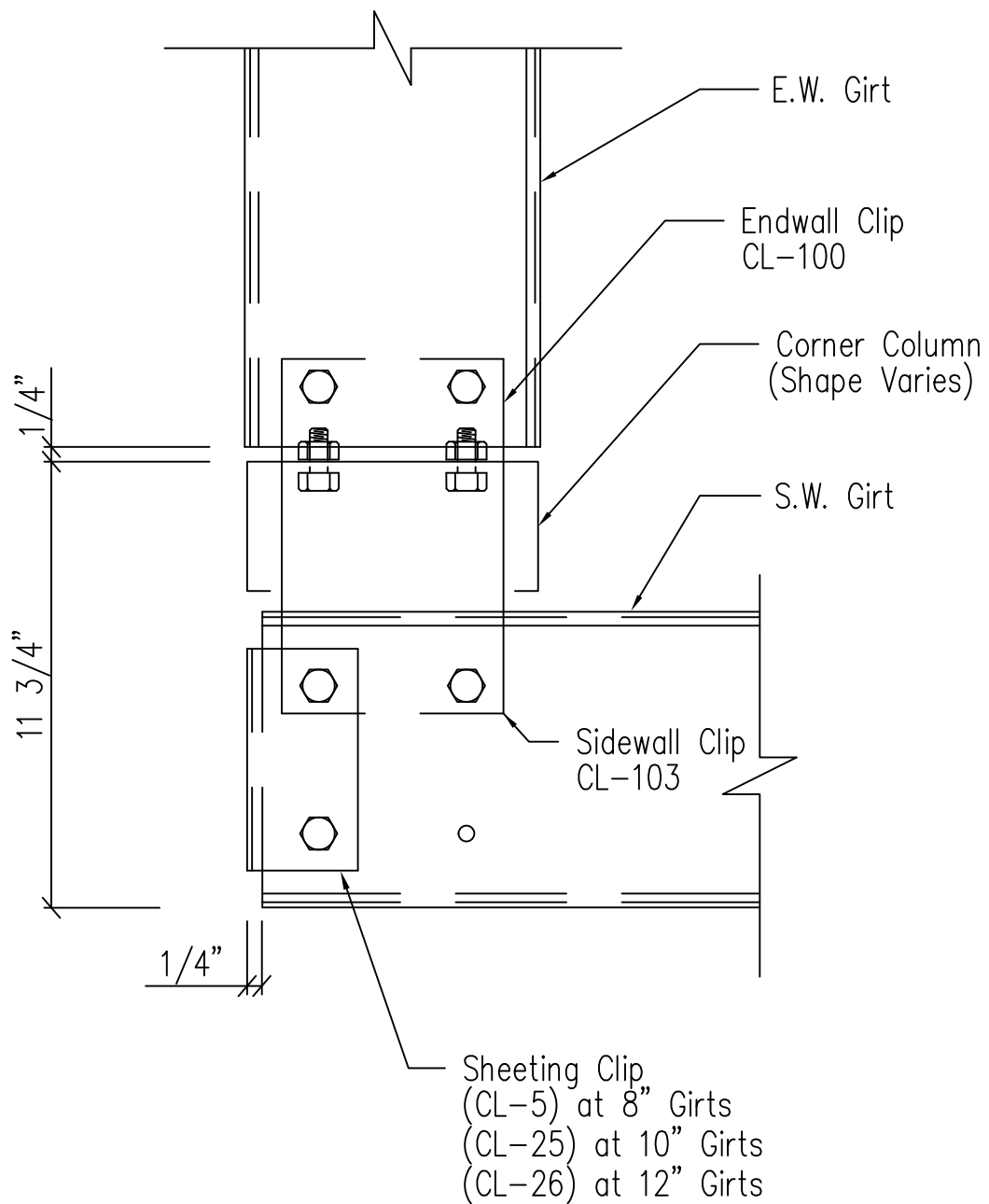


Note: All connection bolts are 1/2" x 1 1/4" machine bolts unless noted.

Section at "C" Corner Column
Flush Endwall

DRAWING NO.

SD21



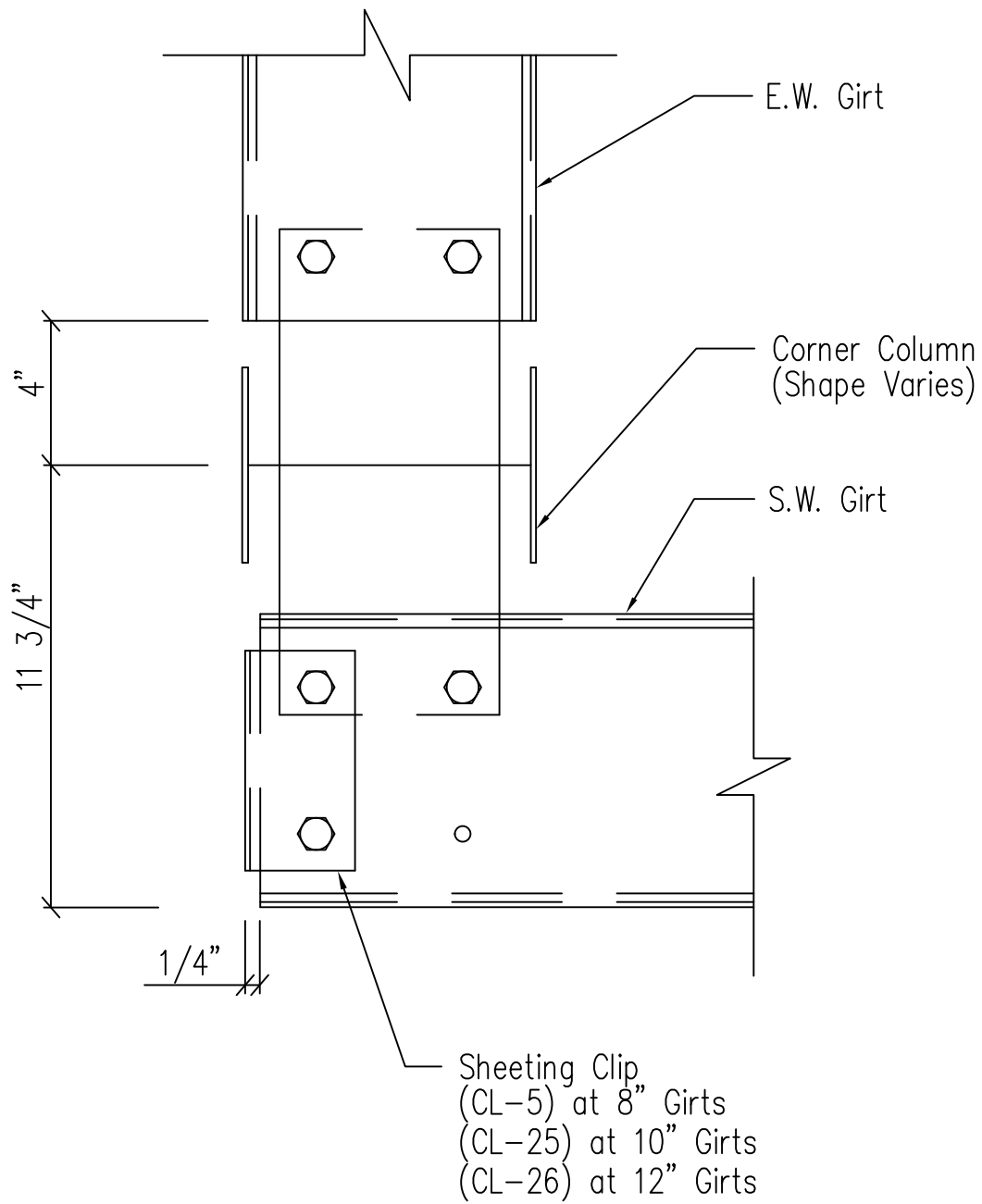
ERECTOR NOTE: IF CLIP BOXES ON BUILDING ELEVATION VIEW(S) ARE BELOW THE INTENDED GIRT LINE, THE CLIP(S) IN REFERENCE ARE TOED DOWN. IF ABOVE THE GIRT LINE, THEN TOED UP.

Note: All connection bolts are 1/2" x 1 1/4" machine bolts unless noted.

Section at "C" Corner Column
 Flush Endwall

DRAWING NO.

SD24



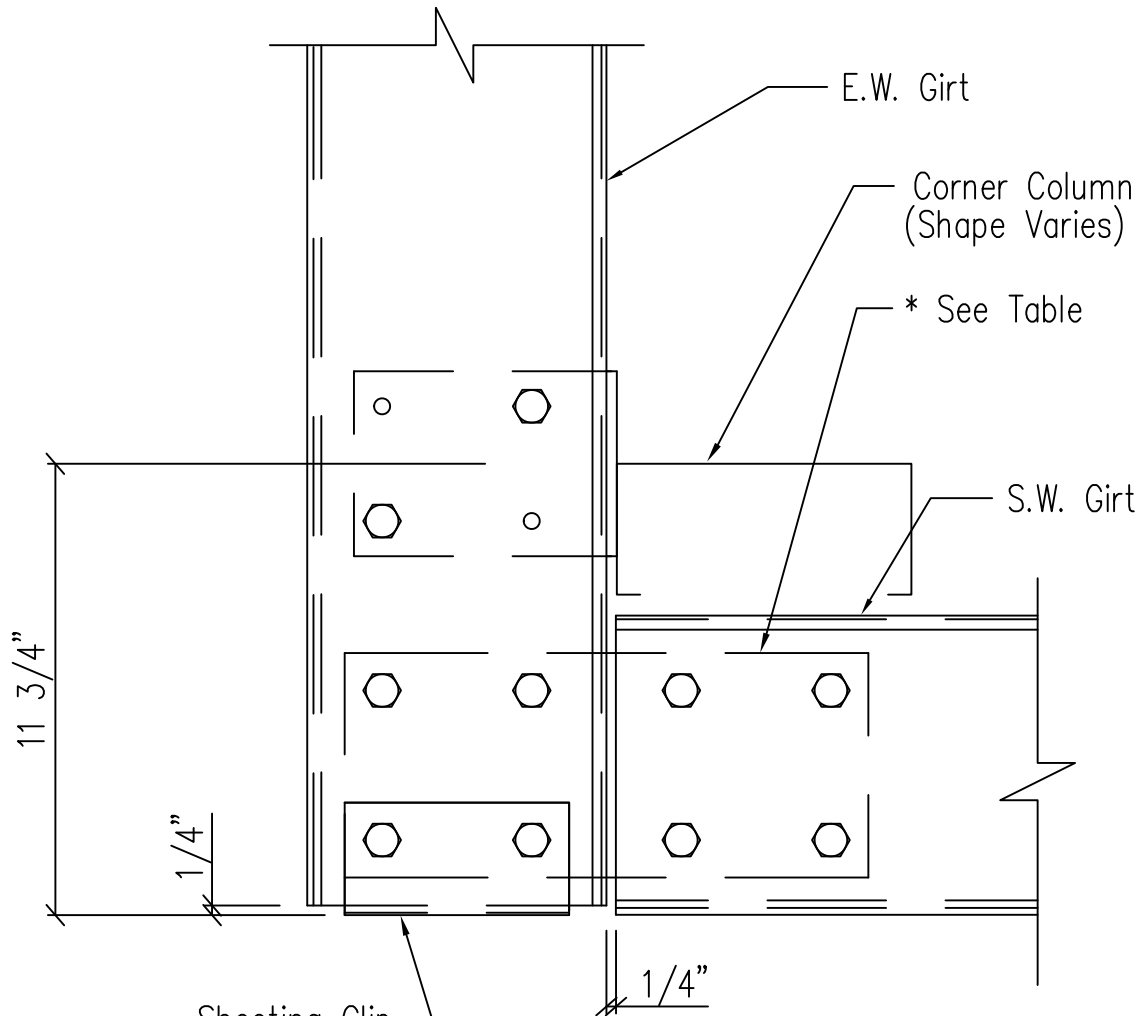
Note: All connection bolts are 1/2" x 1 1/4" machine bolts unless noted.

Section at Hot Rolled Corner Column

Flush Endwall

DRAWING NO.

SD25



Sheeting Clip
 (CL-5) at 8" Girts
 (CL-25) at 10" Girts
 (CL-26) at 12" Girts

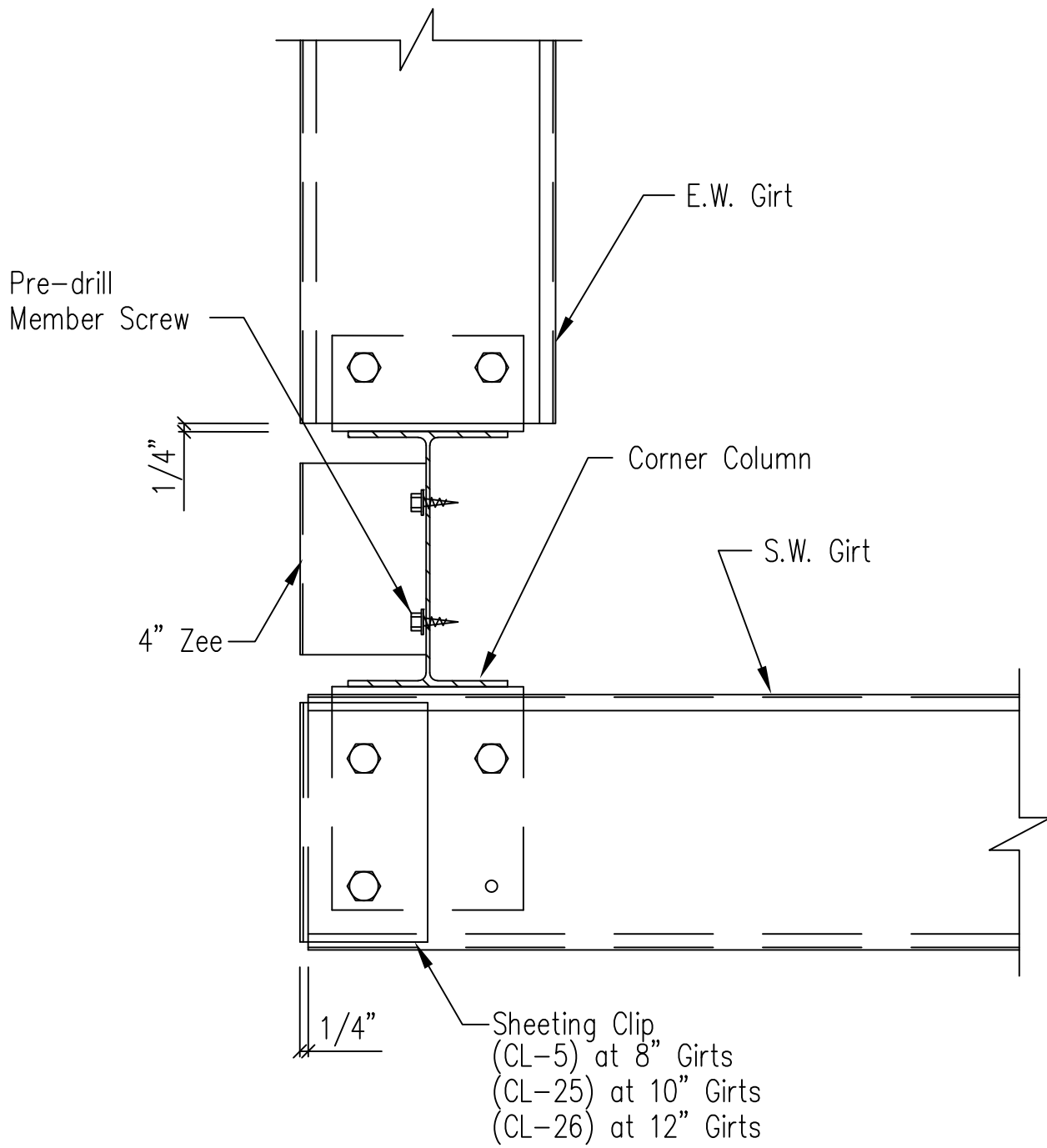
CLIP TABLE		
EW GIRT	SW GIRT	CLIP
8"	8"	CL-64
8"	10"	CL-65
10"	8"	CL-66
10"	10"	CL-67

Note: All connection bolts are 1/2" x 1 1/4" machine bolts unless noted.

Section at "C" Corner Column
 By-Pass Endwall

DRAWING NO.

SD26



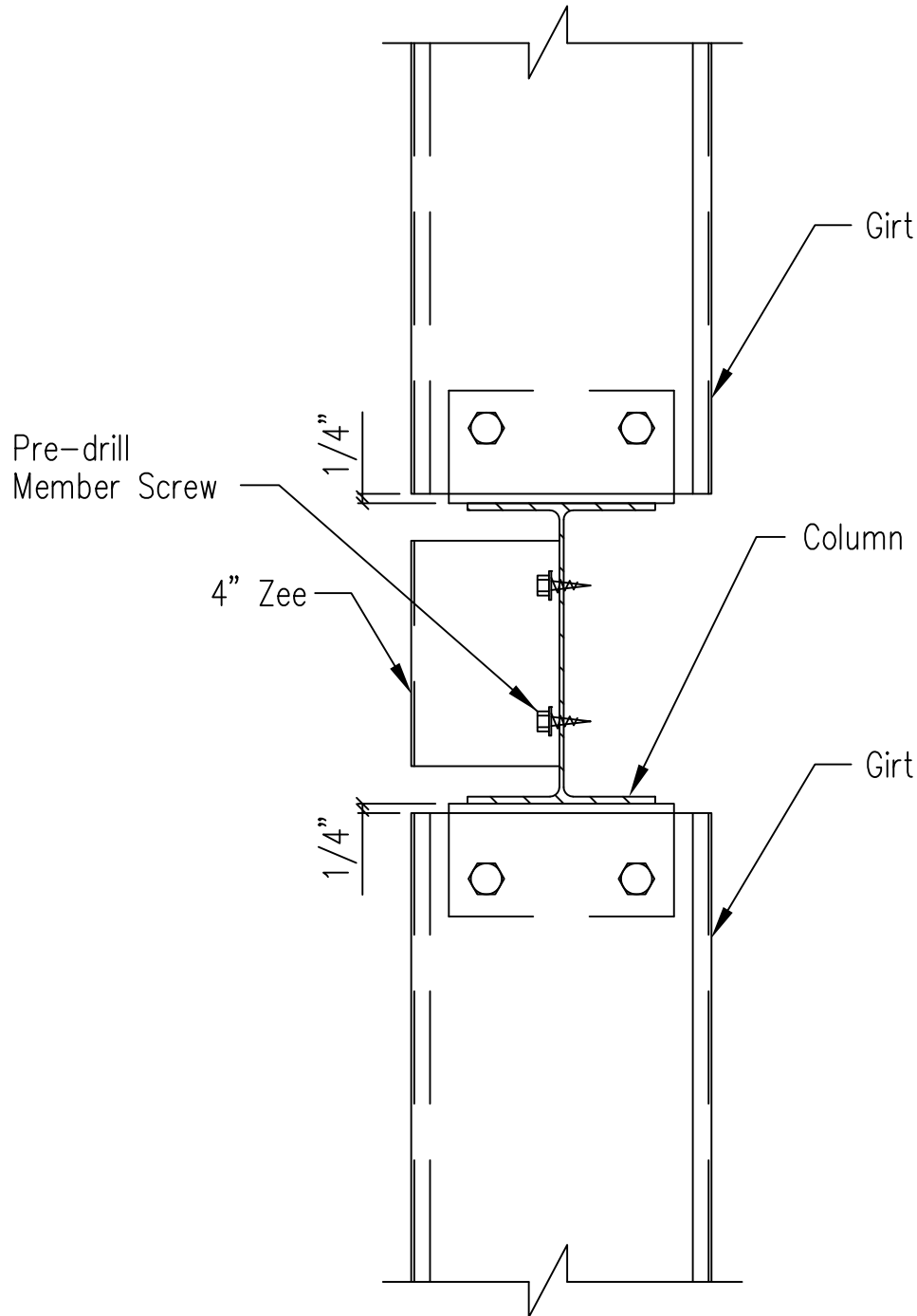
Note: All connection bolts are 1/2" x 1 1/4" machine bolts unless noted.

Section at Hot Rolled Corner Column

Flush Endwall - By-Pass Sidewall

DRAWING NO.

SD30



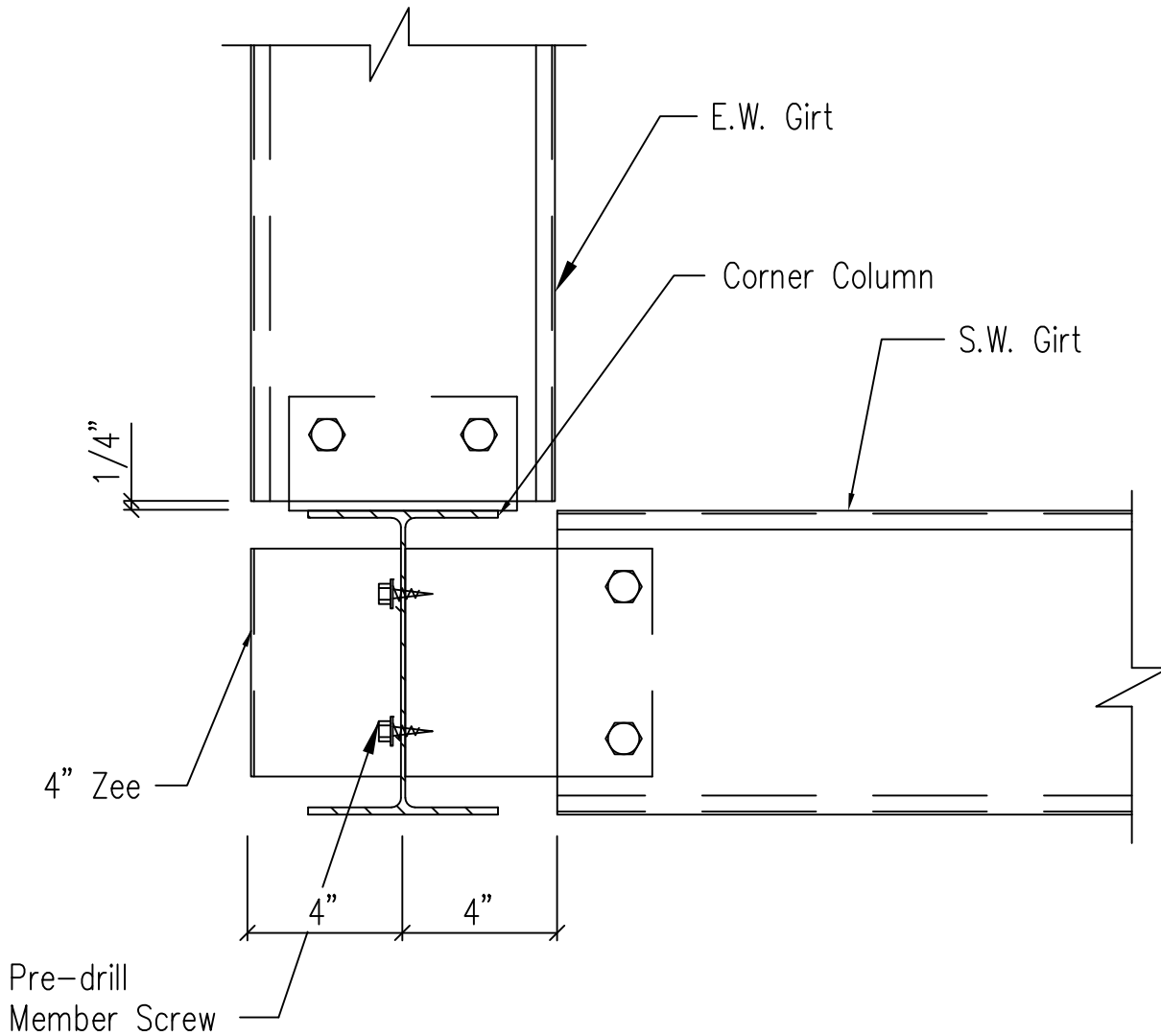
Note: All connection bolts are 1/2" x 1 1/4" machine bolts unless noted.

Section at Hot Rolled Corner Column

Flush Endwall - Open By-Pass Sidewall

DRAWING NO.

SD32



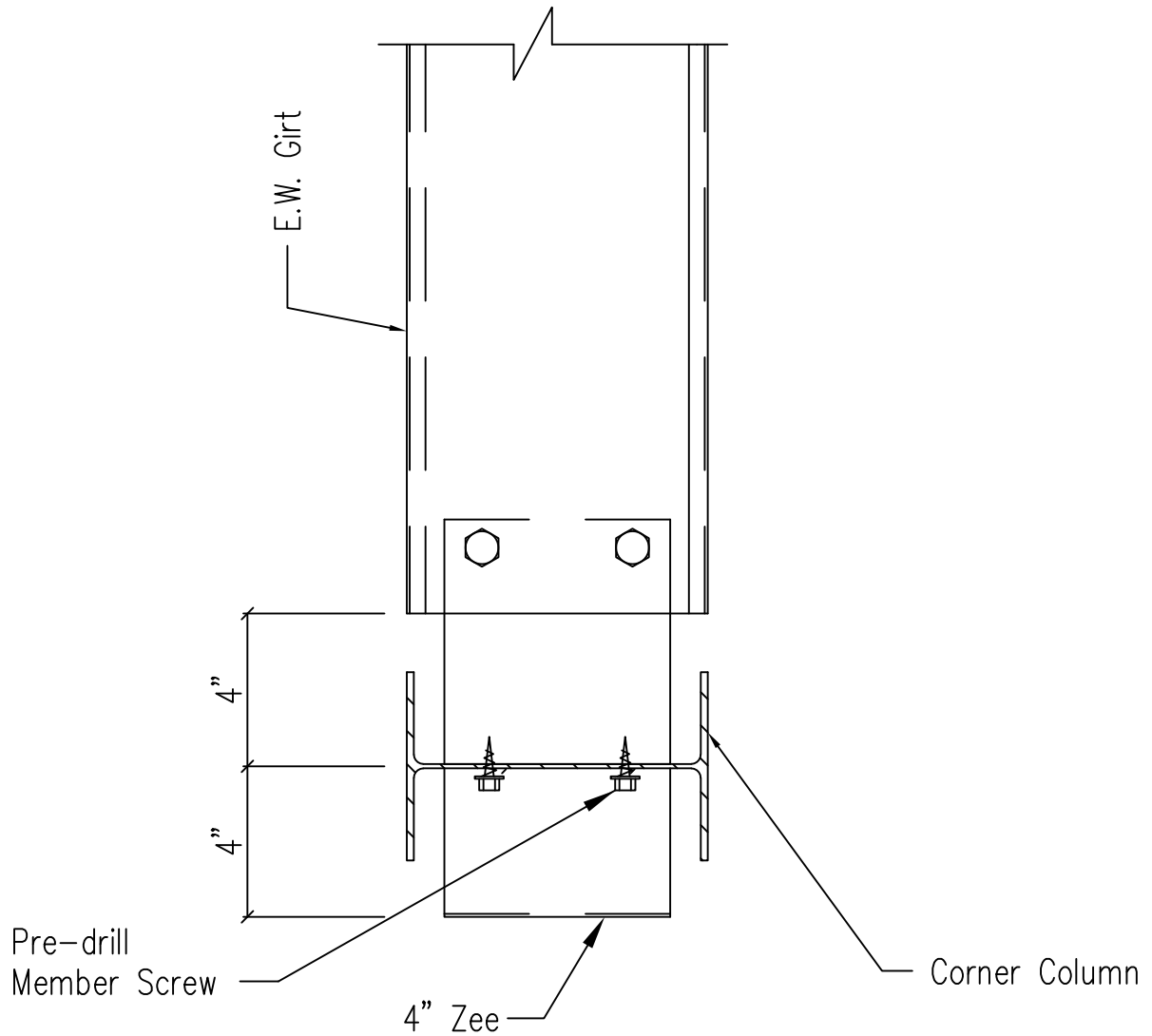
Note: All connection bolts are 1/2" x 1 1/4" machine bolts unless noted.

Section at Hot Rolled Corner Column

Flush Endwall - Flush Sidewall

DRAWING NO.

SD33



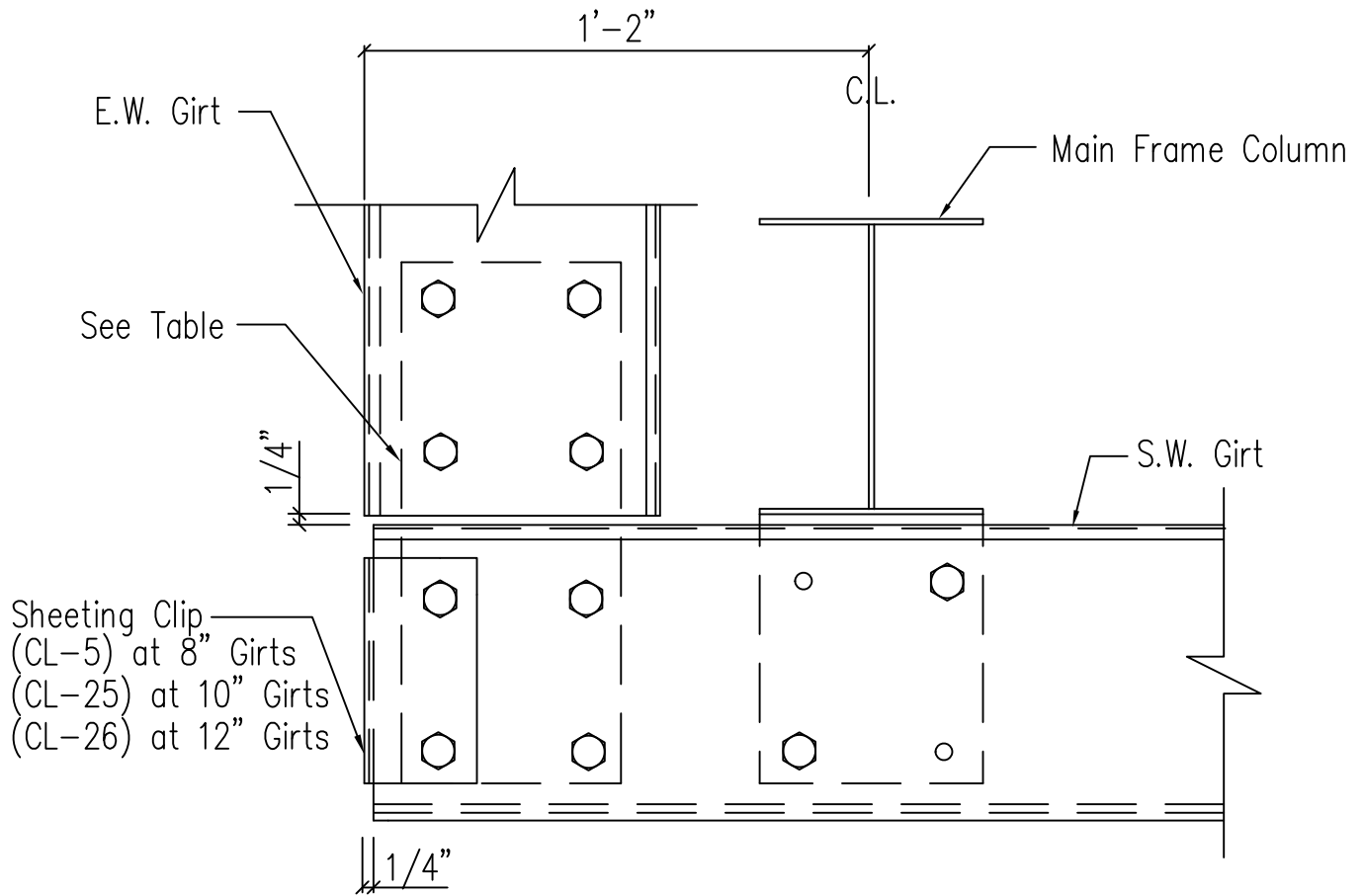
Note: All connection bolts are 1/2" x 1 1/4" machine bolts unless noted.

Section at Hot Rolled Corner Column

Flush Endwall - Flush Sidewall - Open Sidewall

DRAWING NO.

SD34



Sheeting Clip
 (CL-5) at 8" Girts
 (CL-25) at 10" Girts
 (CL-26) at 12" Girts

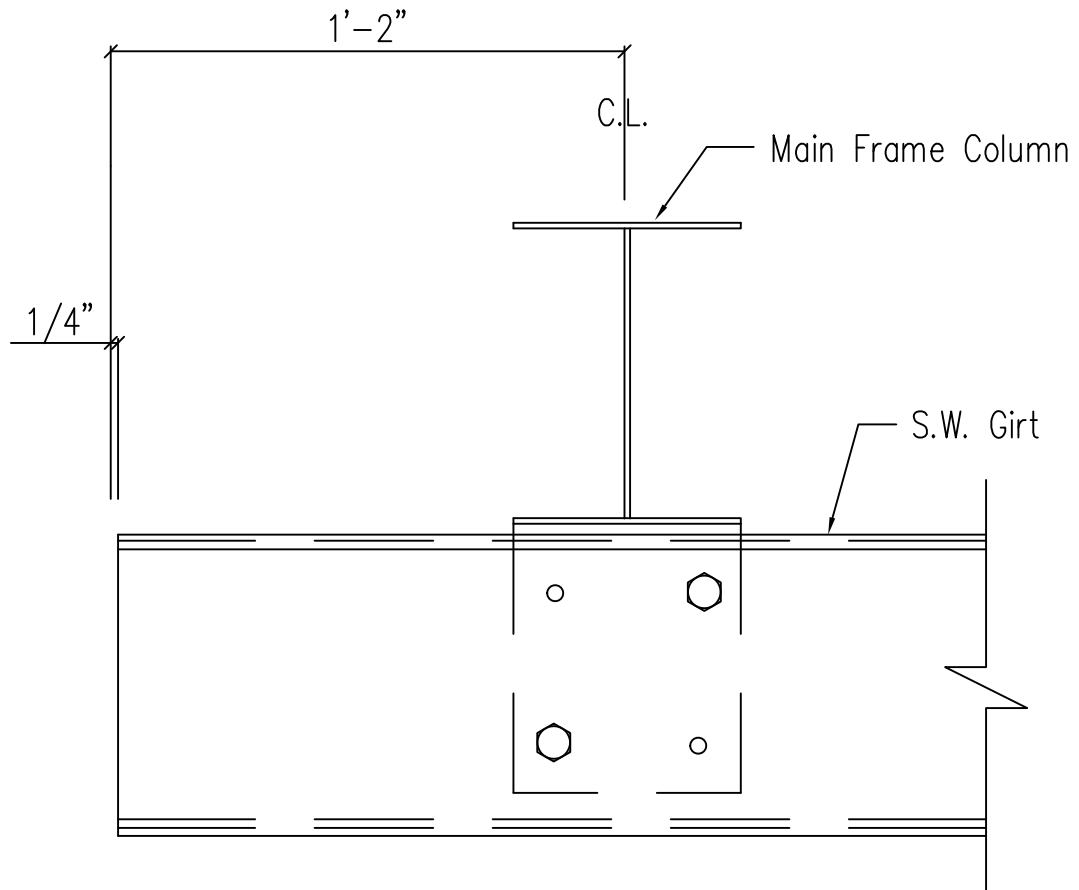
CLIP TABLE		
SW GIRT	EW. GIRT	CLIP
8"	8"	CL-64
8"	10"	CL-65
10"	8"	CL-66
10"	10"	CL-67

Note: All connection bolts are 1/2" x 1 1/4" machine bolts unless noted.

Section at MF Corner Column
 Flush Endwall

DRAWING NO.

SD36



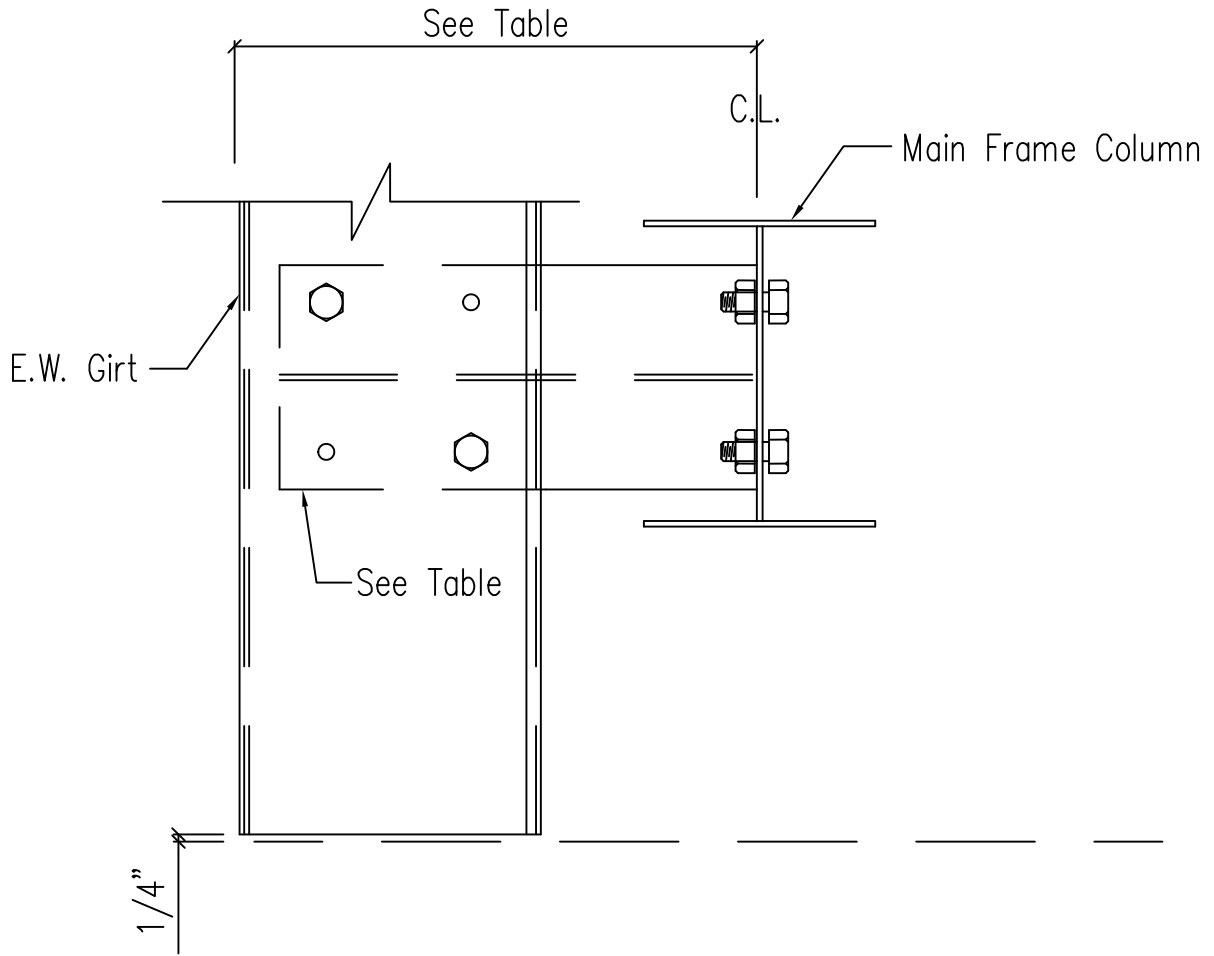
Note: All connection bolts are 1/2" x 1 1/4" machine bolts unless noted.

Section at Rigid Frame Corner Column

Flush Endwall - Open By-Pass Sidewall

DRAWING NO.

SD37



GIRT DEPTH	CLIP	DIMENSION
8"	CL-61	1'-2"
10"	CL-62	1'-2"
1'-0"	CL-61	1'-4"

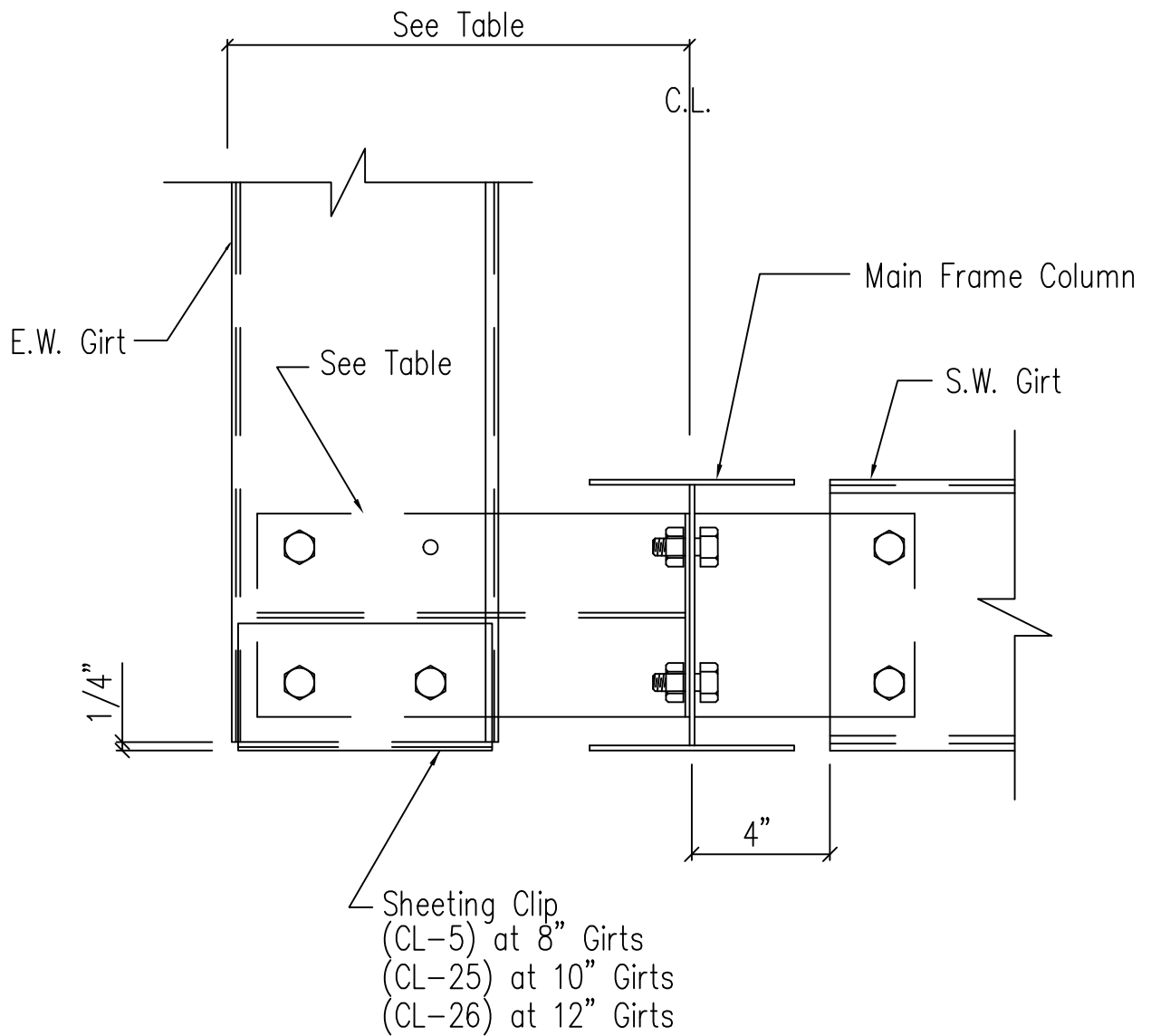
Note: All connection bolts are 1/2" x 1 1/4" machine bolts unless noted.

Section at MF Corner Column

Flush Endwall - Open By-Pass Sidewall

DRAWING NO.

SD38



GIRT DEPTH	CLIP	DIMENSION
8"	CL-61	1'-2"
10"	CL-62	1'-2"
1'-0"	CL-61	1'-4"

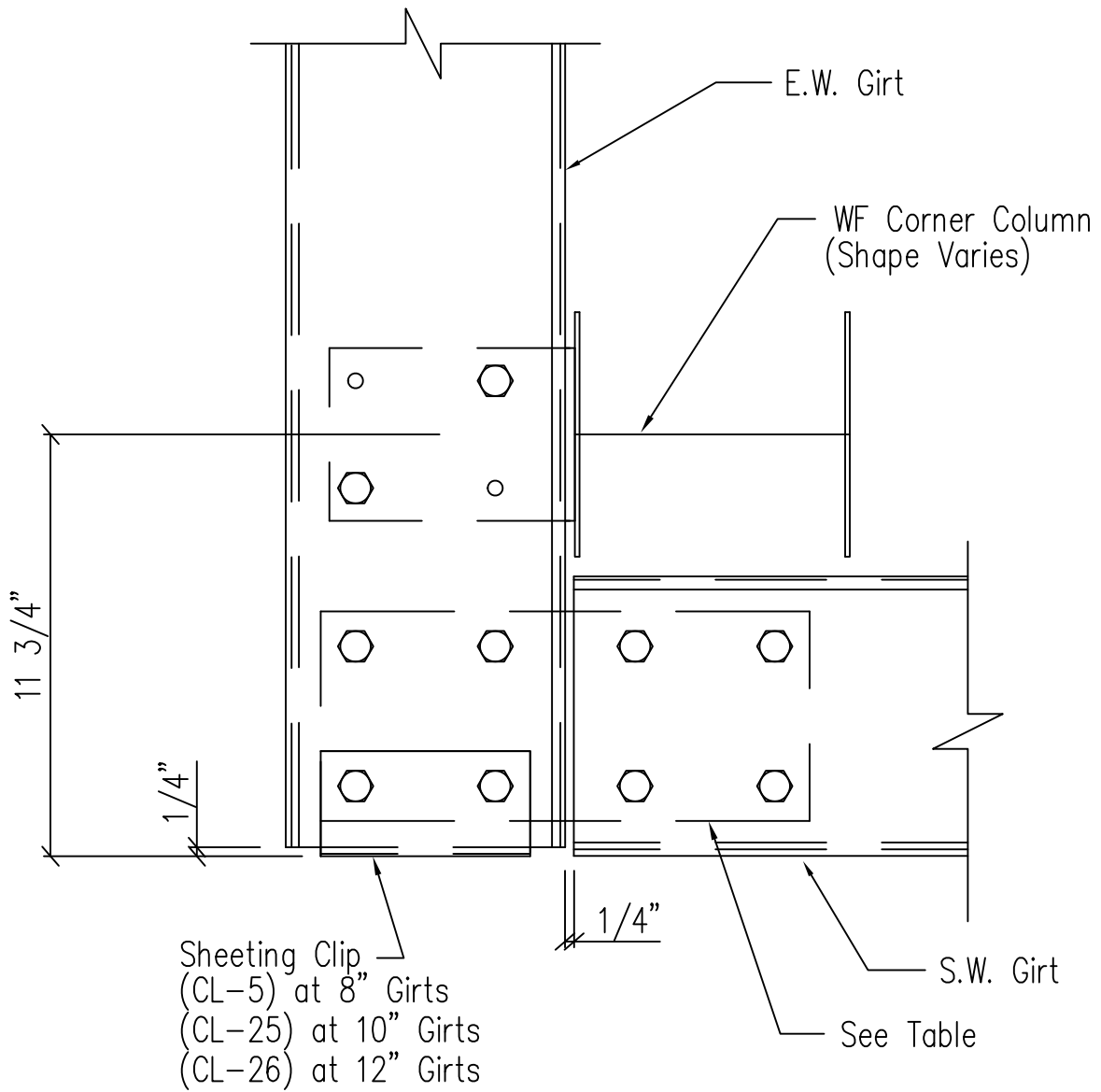
Note: All connection bolts are 1/2" x 1 1/4" machine bolts unless noted.

Section at MF Corner Column

By-Pass Endwall - Flush Sidewall

DRAWING NO.

SD39



CLIP TABLE		
EW GIRT	SW GIRT	CLIP
8"	8"	CL-64
8"	10"	CL-65
10"	8"	CL-66
10"	10"	CL-67

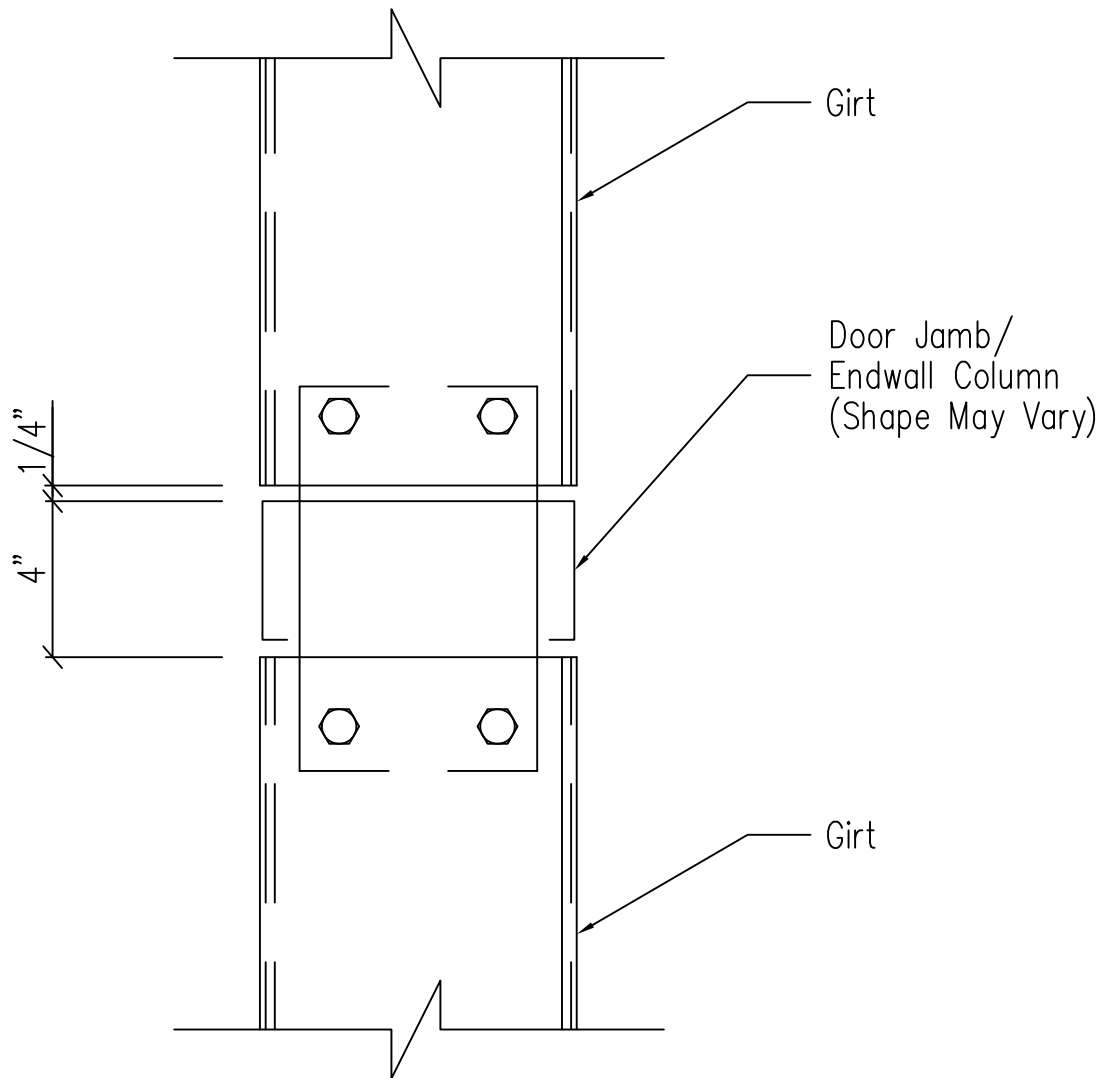
Note: All connection bolts are 1/2" x 1 1/4" machine bolts unless noted.

Section at W.F. Corner Column

By-Pass Endwall

DRAWING NO.

SD42

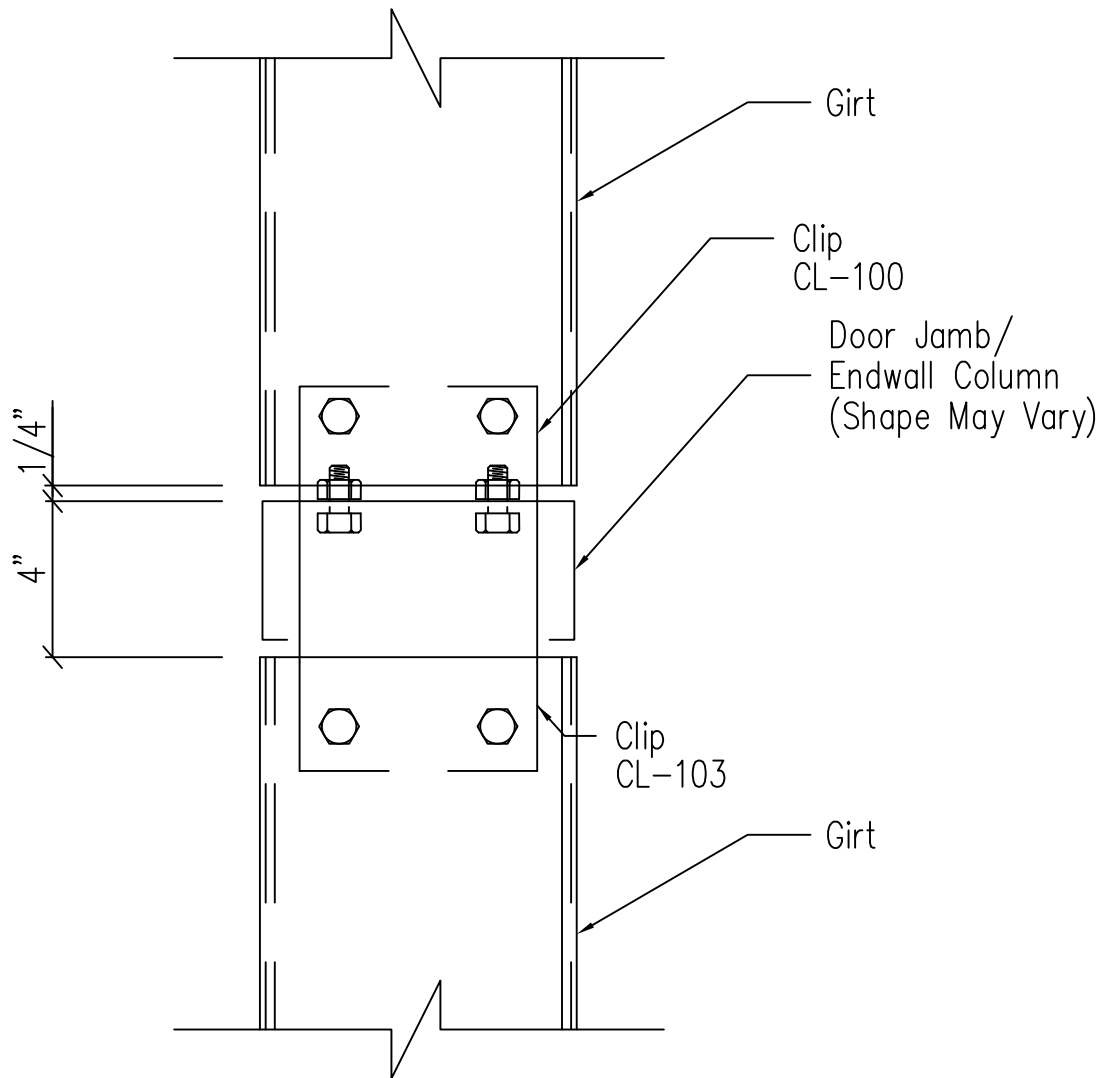


Note: All connection bolts are 1/2" x 1 1/4" machine bolts unless noted.

Girt to "C" Door Jamb/Endwall Column Connection

DRAWING NO.

SD43

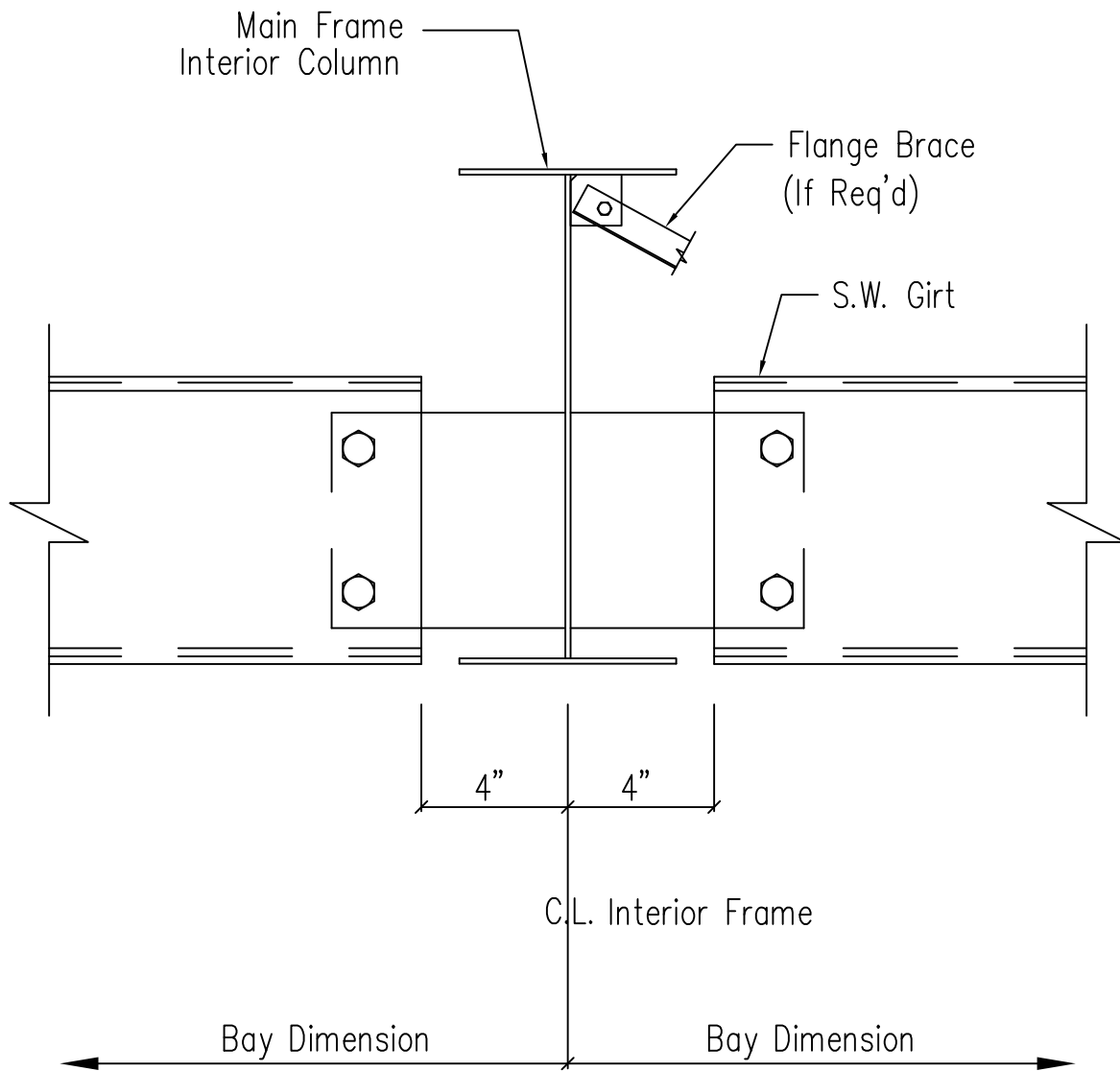


ERECTOR NOTE: IF CLIP BOXES ON BUILDING ELEVATION VIEW(S) ARE BELOW THE INTENDED GIRT LINE, THE CLIP(S) IN REFERENCE ARE TOED DOWN. IF ABOVE THE GIRT LINE, THEN TOED UP.

Note: All connection bolts are 1/2" x 1 1/4" machine bolts unless noted.

Girt to "C" Door Jamb/Endwall Column Connection

DRAWING NO.
SD43



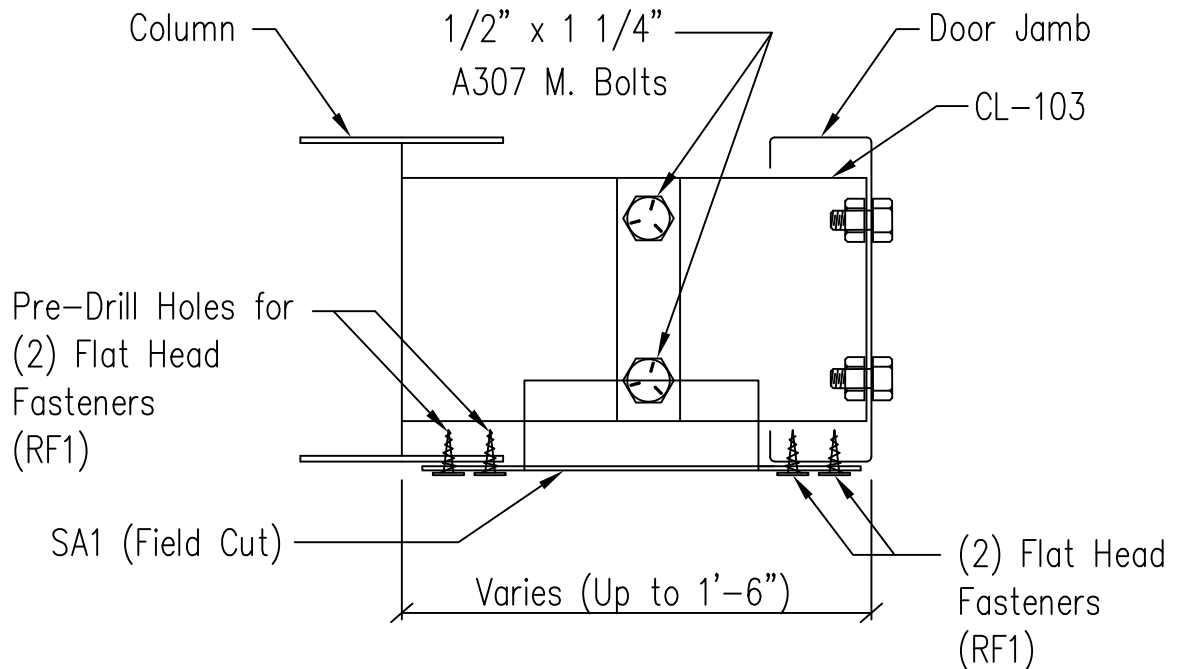
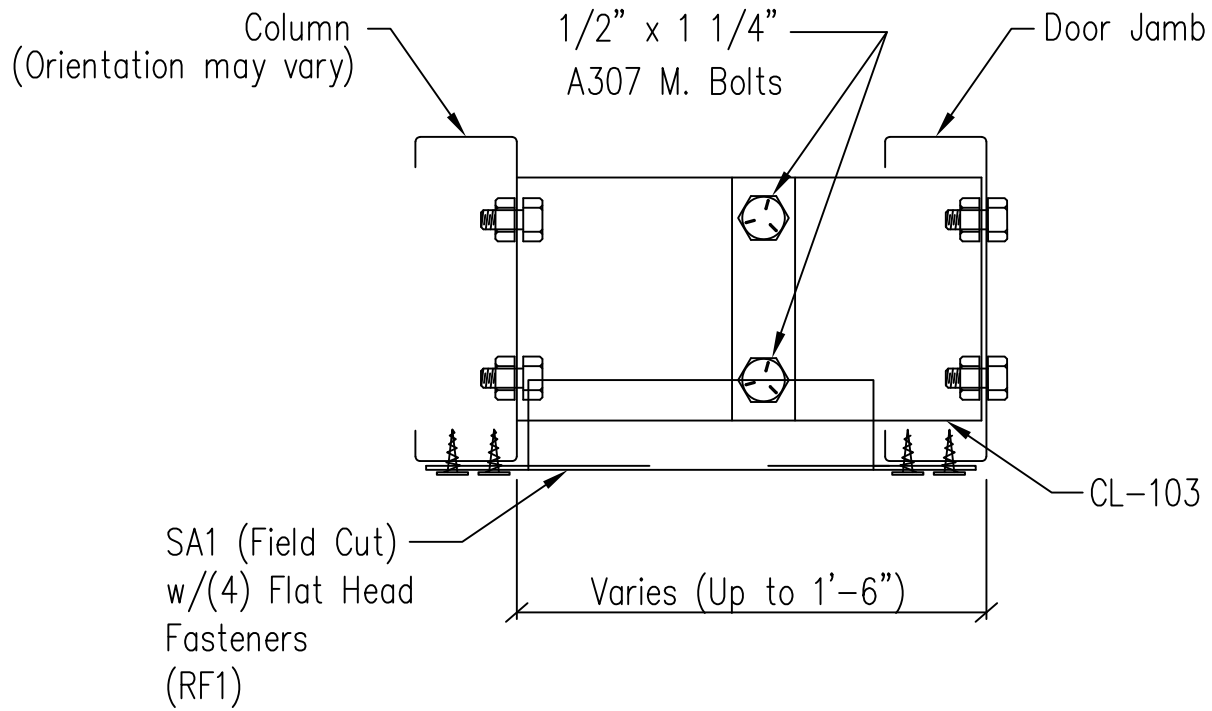
Note: All connection bolts are 1/2" x 1 1/4" machine bolts unless noted.

Section at Interior MF Column

Flush Sidewall

DRAWING NO.

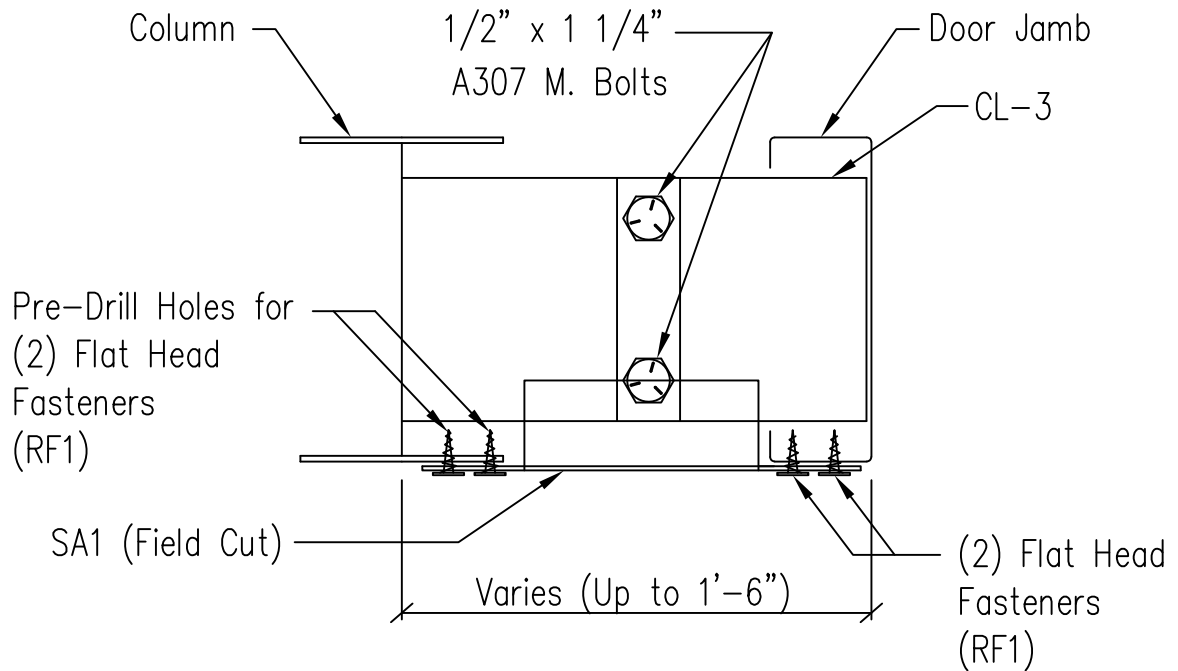
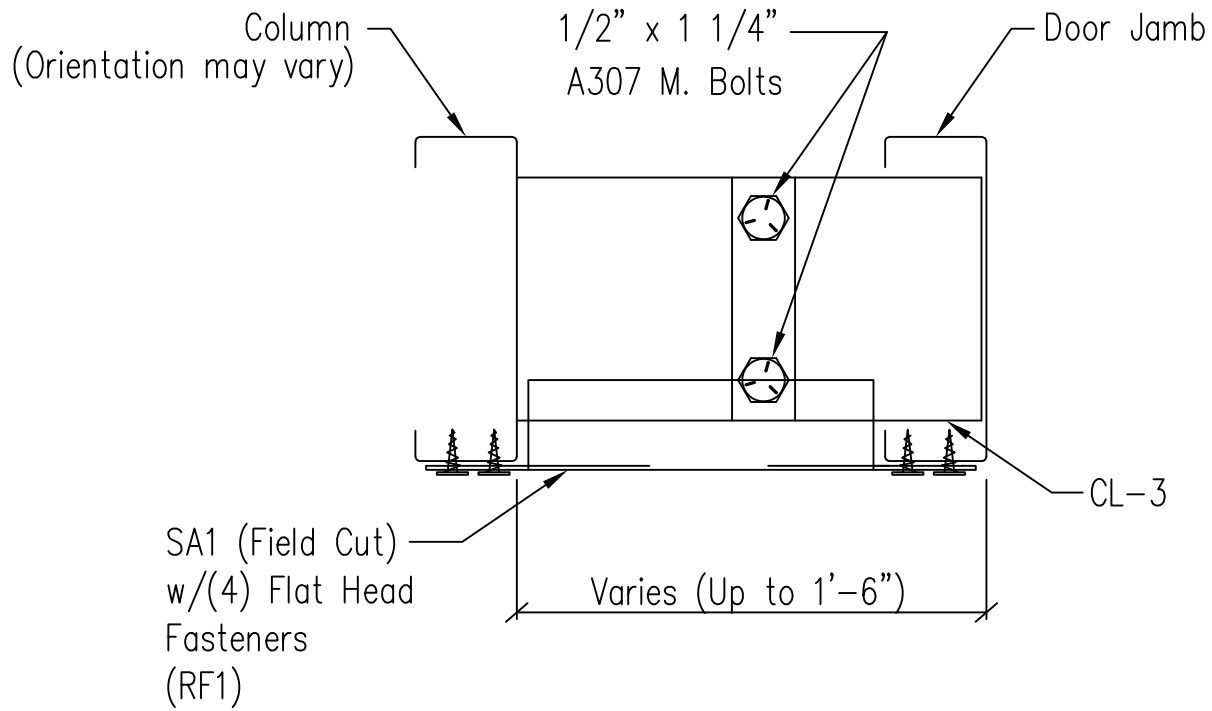
SD49



Column to Door Jamb Clip Attachment

DRAWING NO.

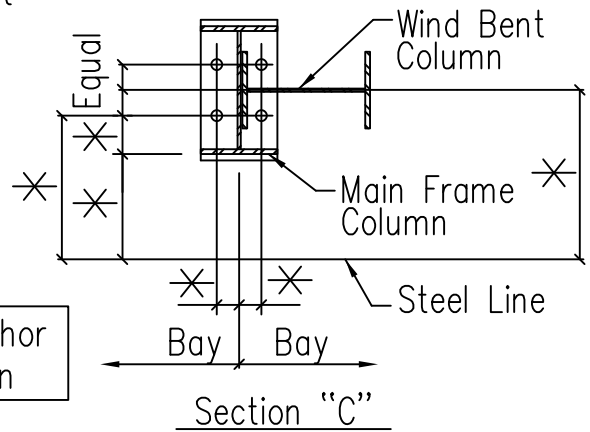
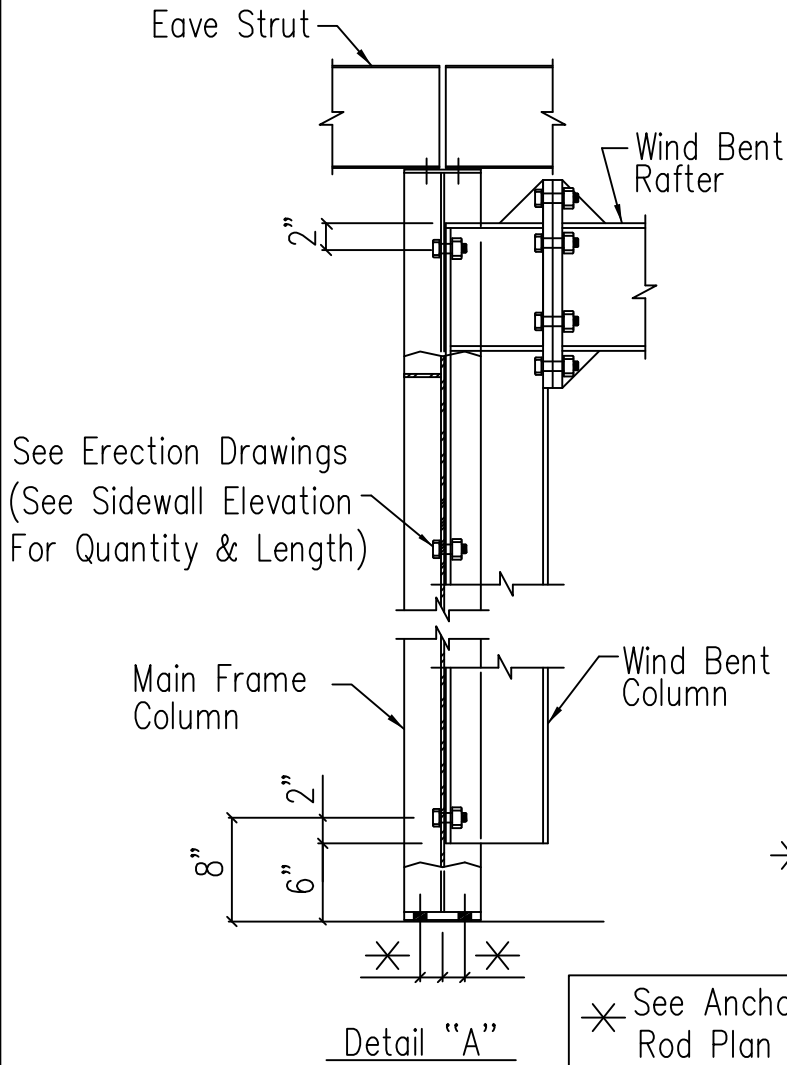
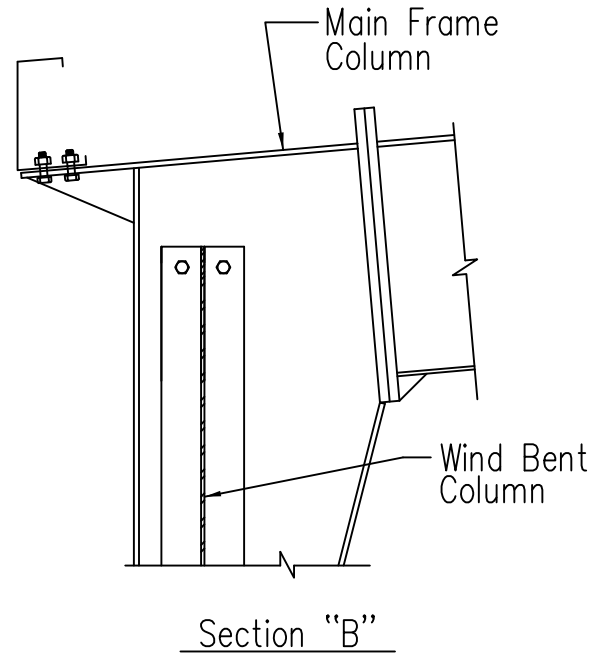
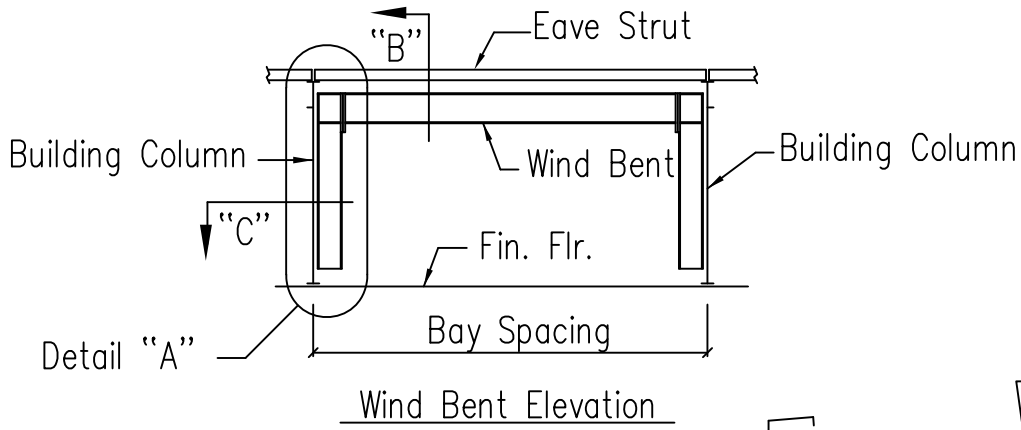
SD113



Column to Door Jamb Clip Attachment

DRAWING NO.

SD114



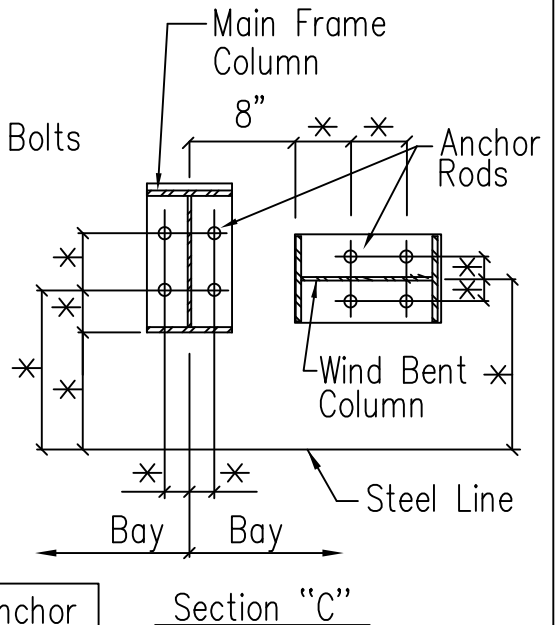
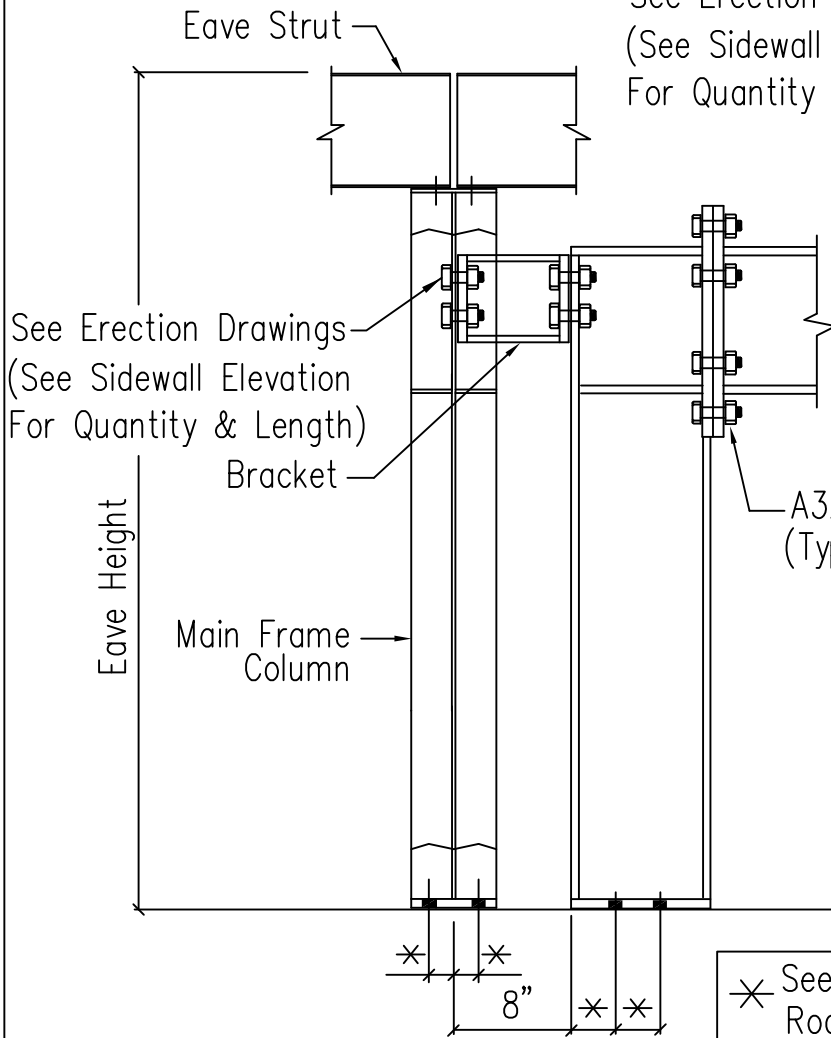
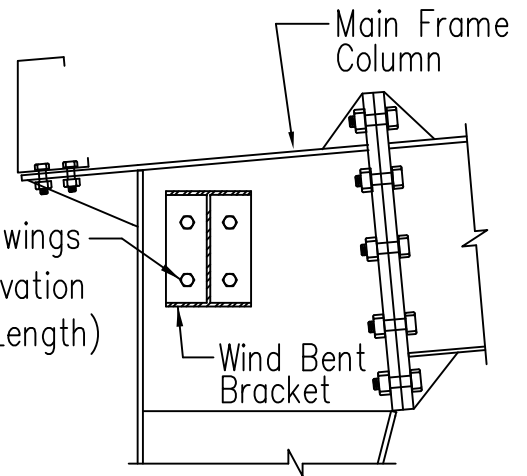
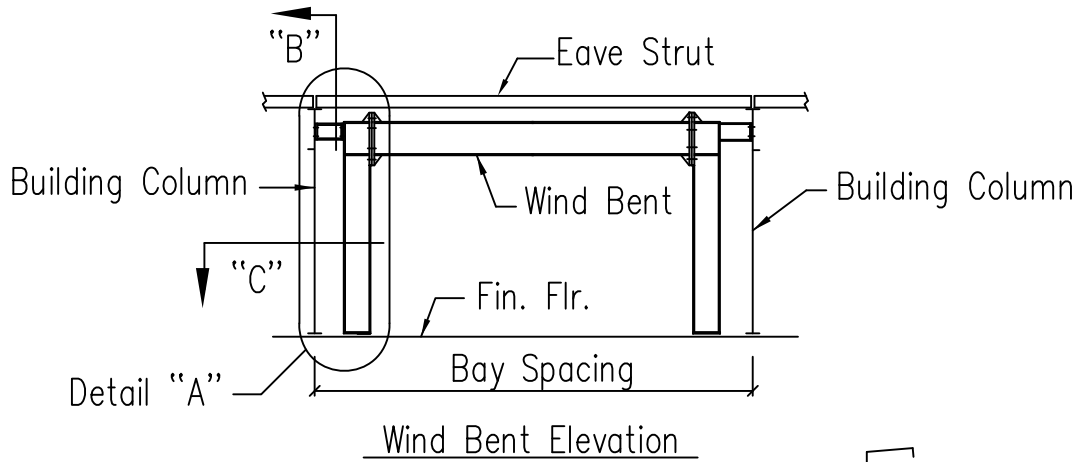
✱ See Anchor Rod Plan

Flush Wind Bent (Floating)

Created On: 5/25/12
Revised On: 7/21/14

DRAWING NO.

SD150



* See Anchor Rod Plan

Flush Wind Bent

Created On: 5/25/12
Revised On: 7/21/14

DRAWING NO.

SD151