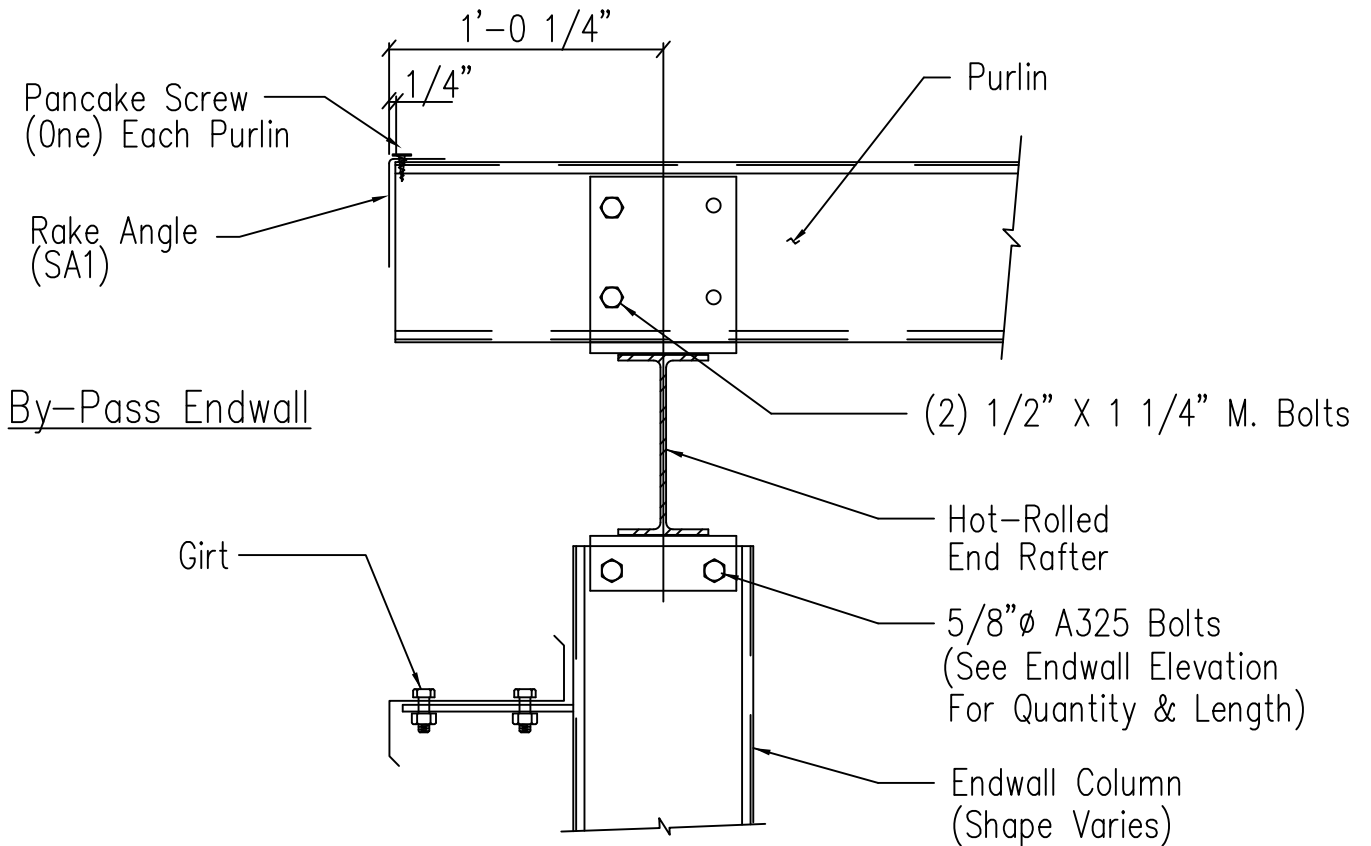
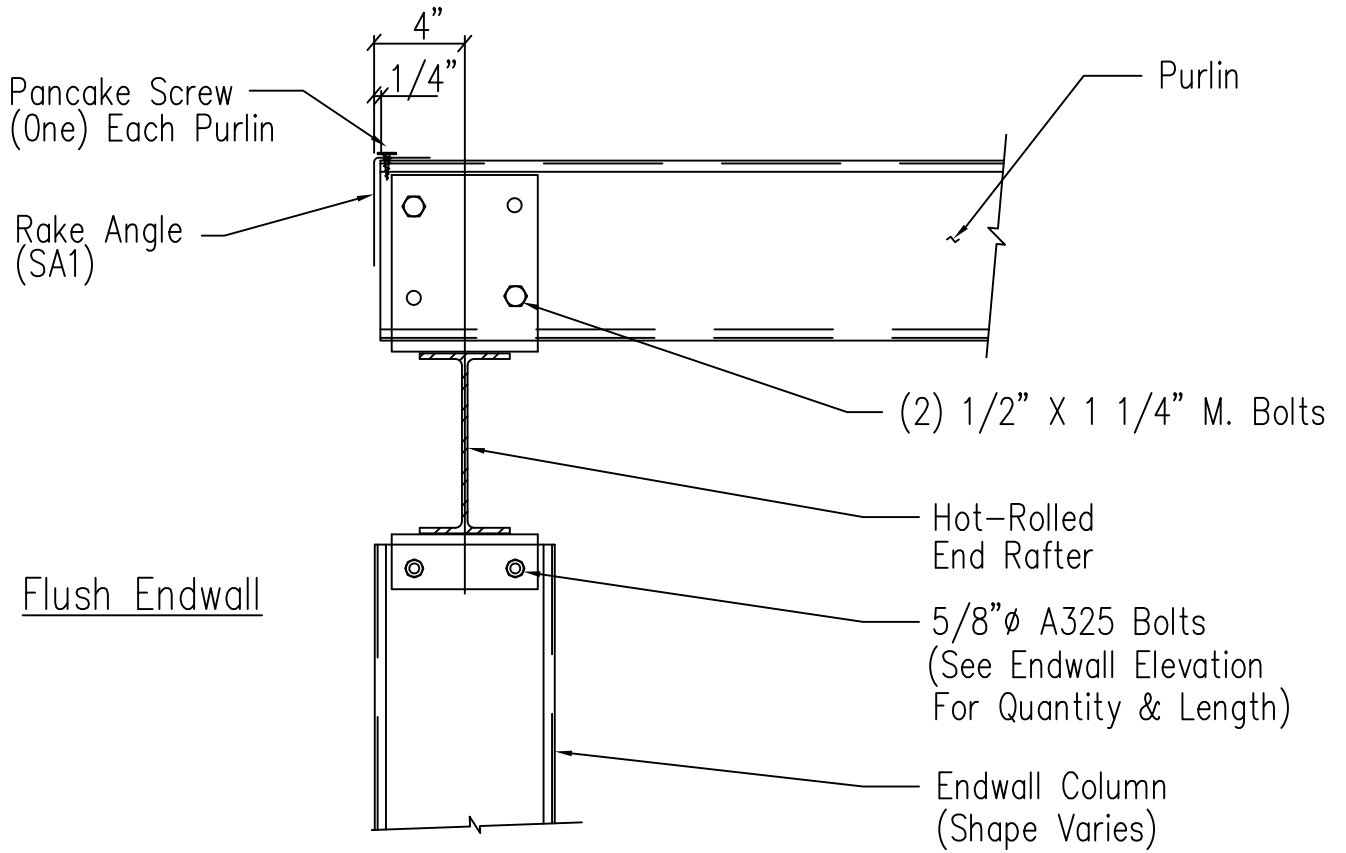


Section Thru Rake at Cold-Form Rafter

DRAWING NO.

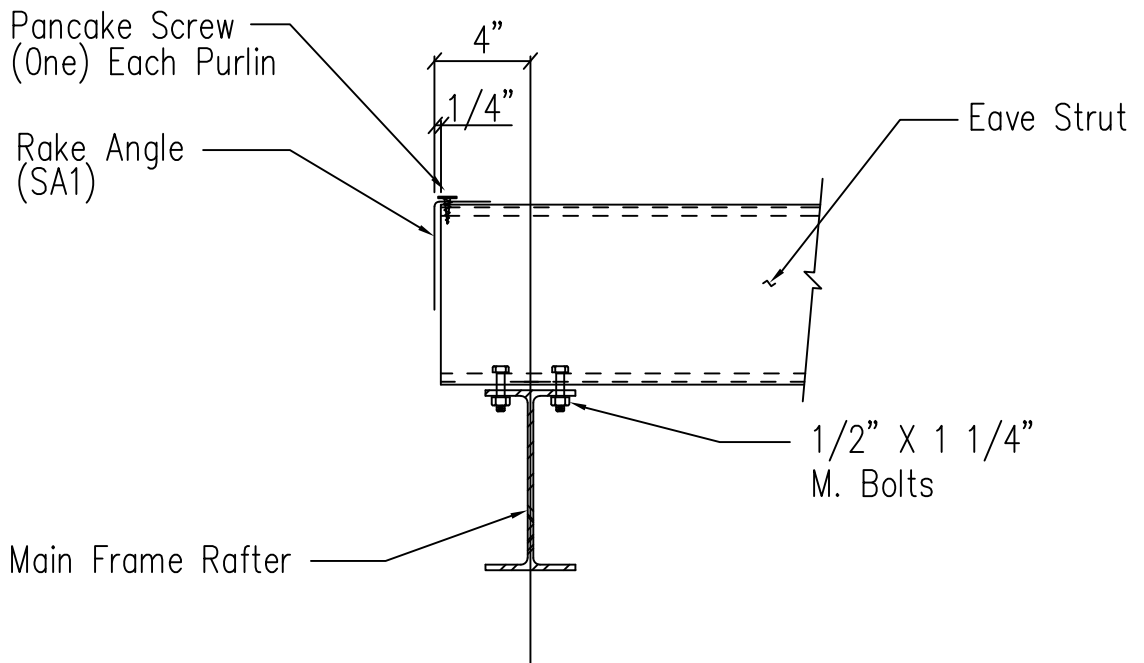
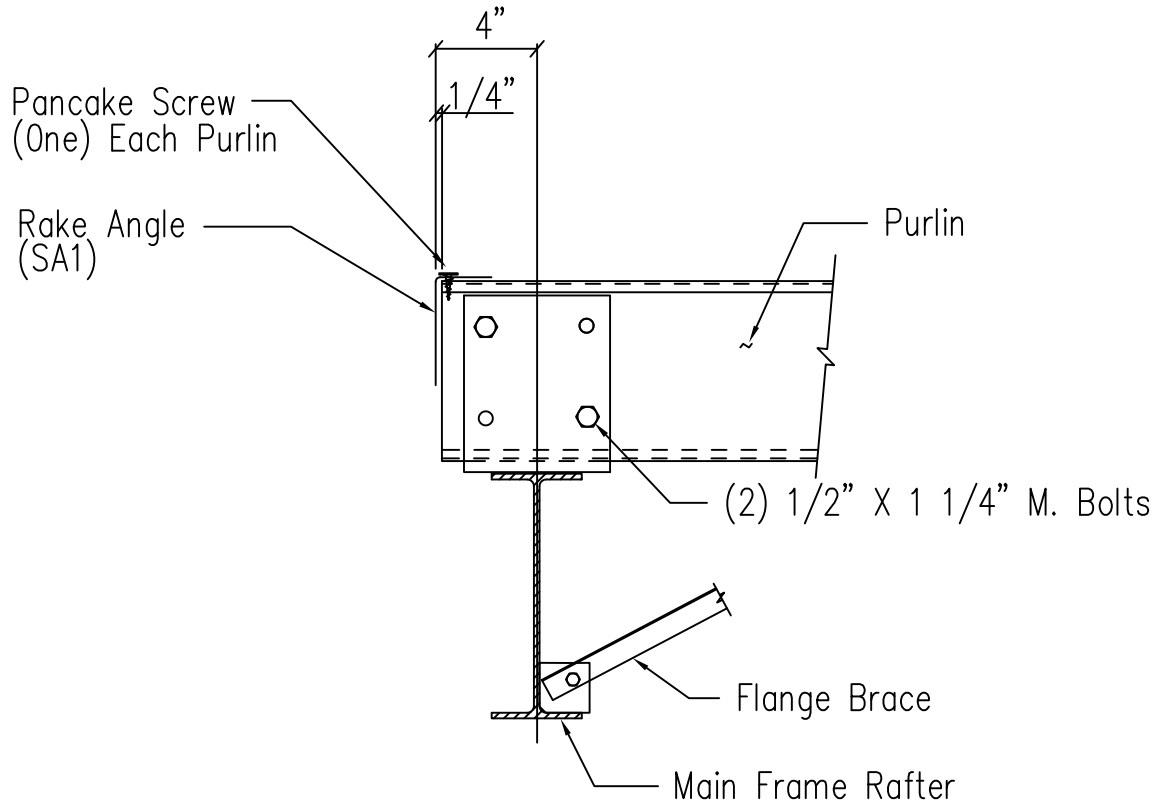
SD1



Section Thru Rake w/Hot Rolled Rafter

DRAWING NO.

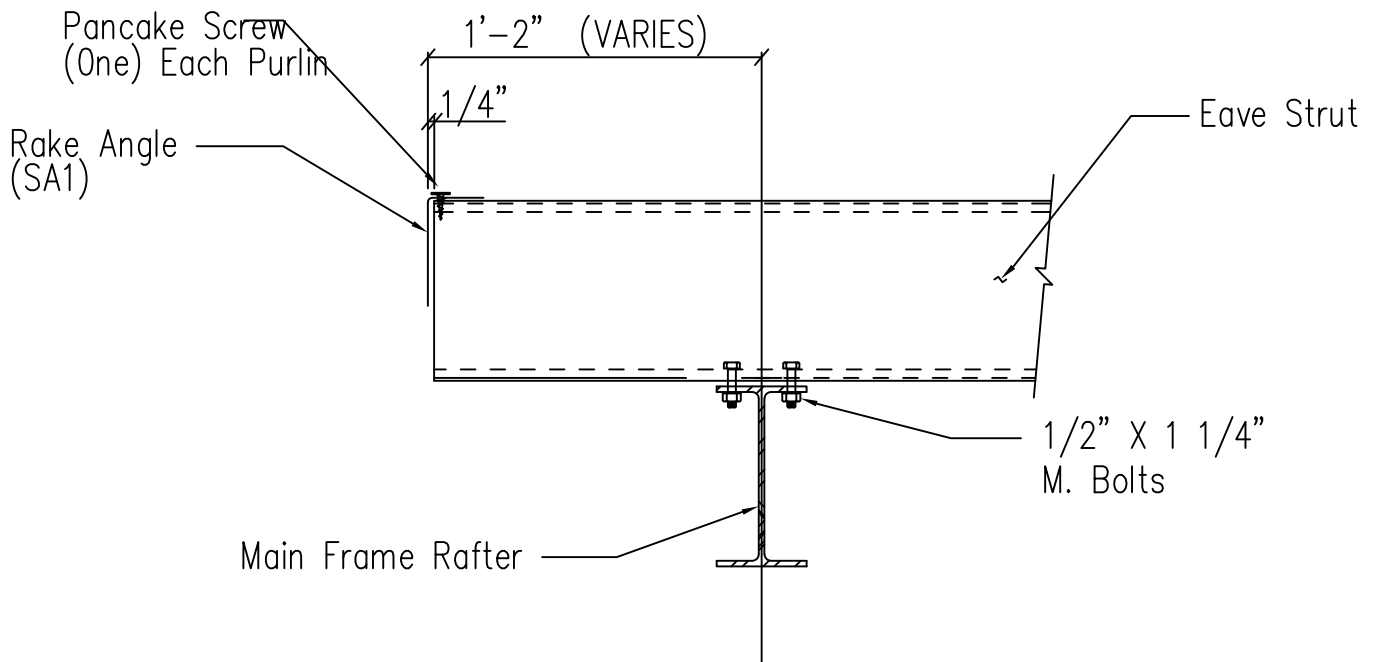
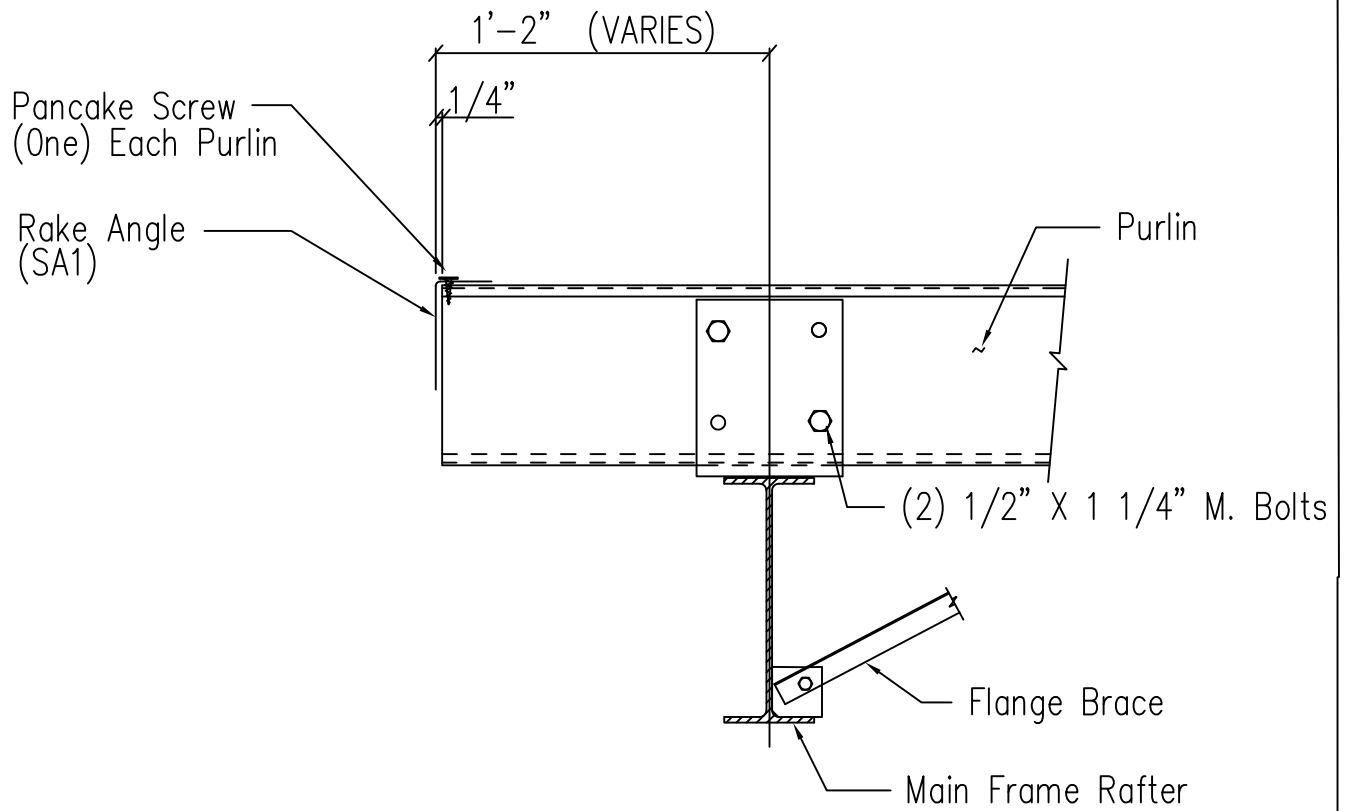
SD5



Main Frame Rafter Connection
PURLIN & EAVE STRUT CONNECTION

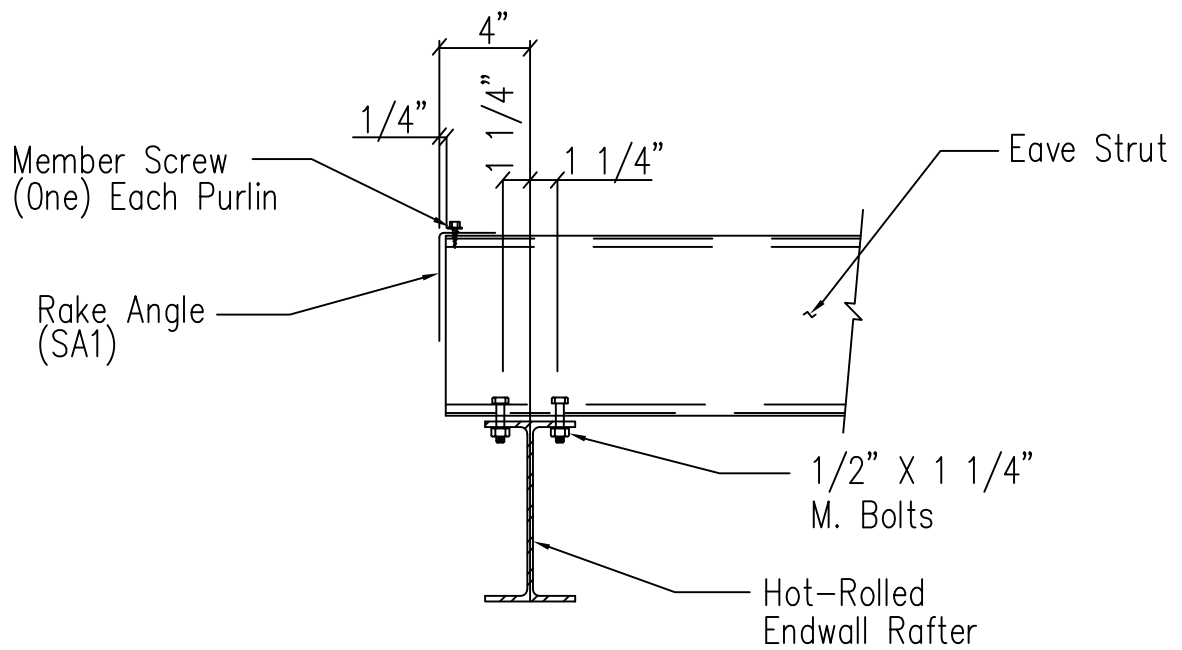
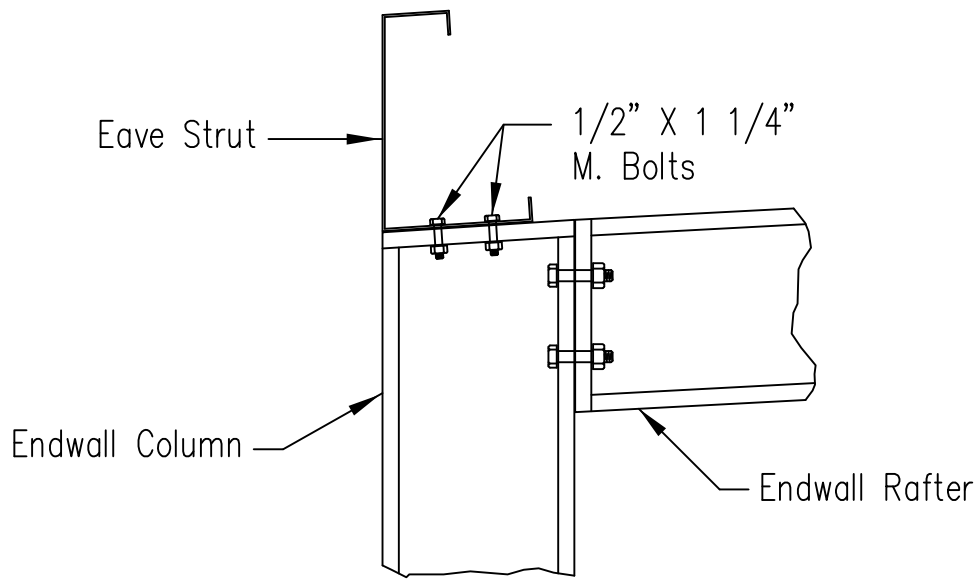
DRAWING NO.

SD9



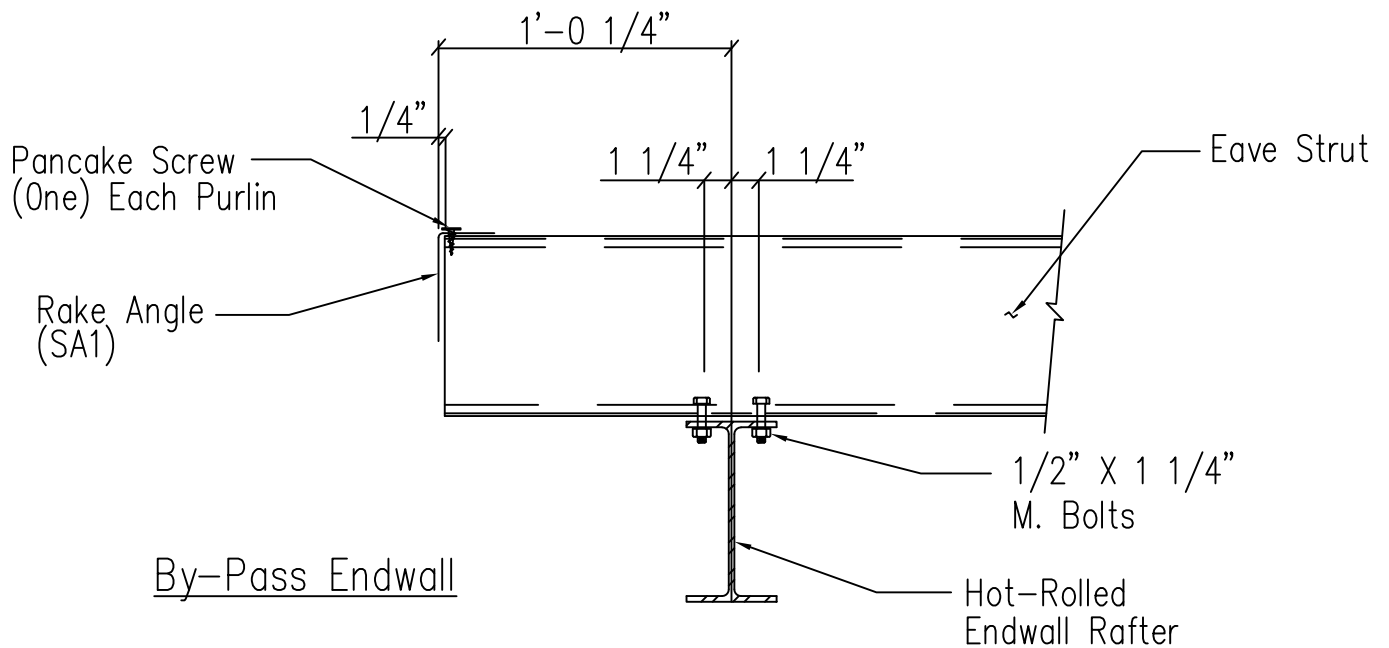
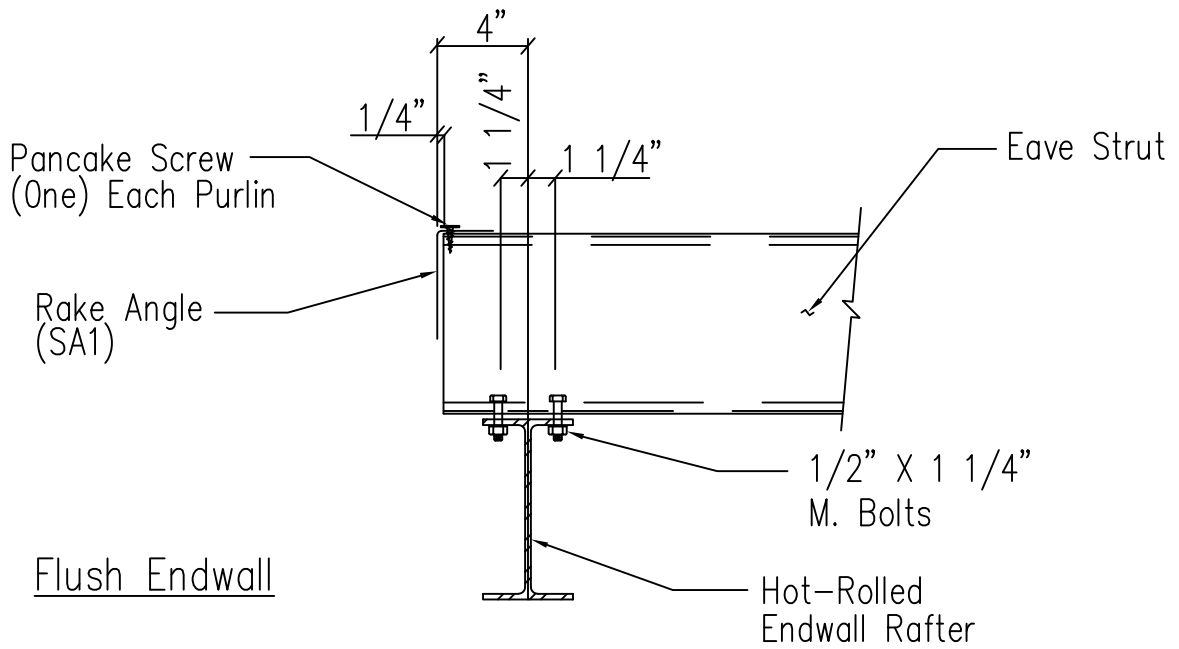
Main Frame Rafter Connection
 PURLIN & EAVE STRUT CONNECTION

DRAWING NO.
SD10



Corner Column Connection WF Rafter/Column
Flush Sidewall

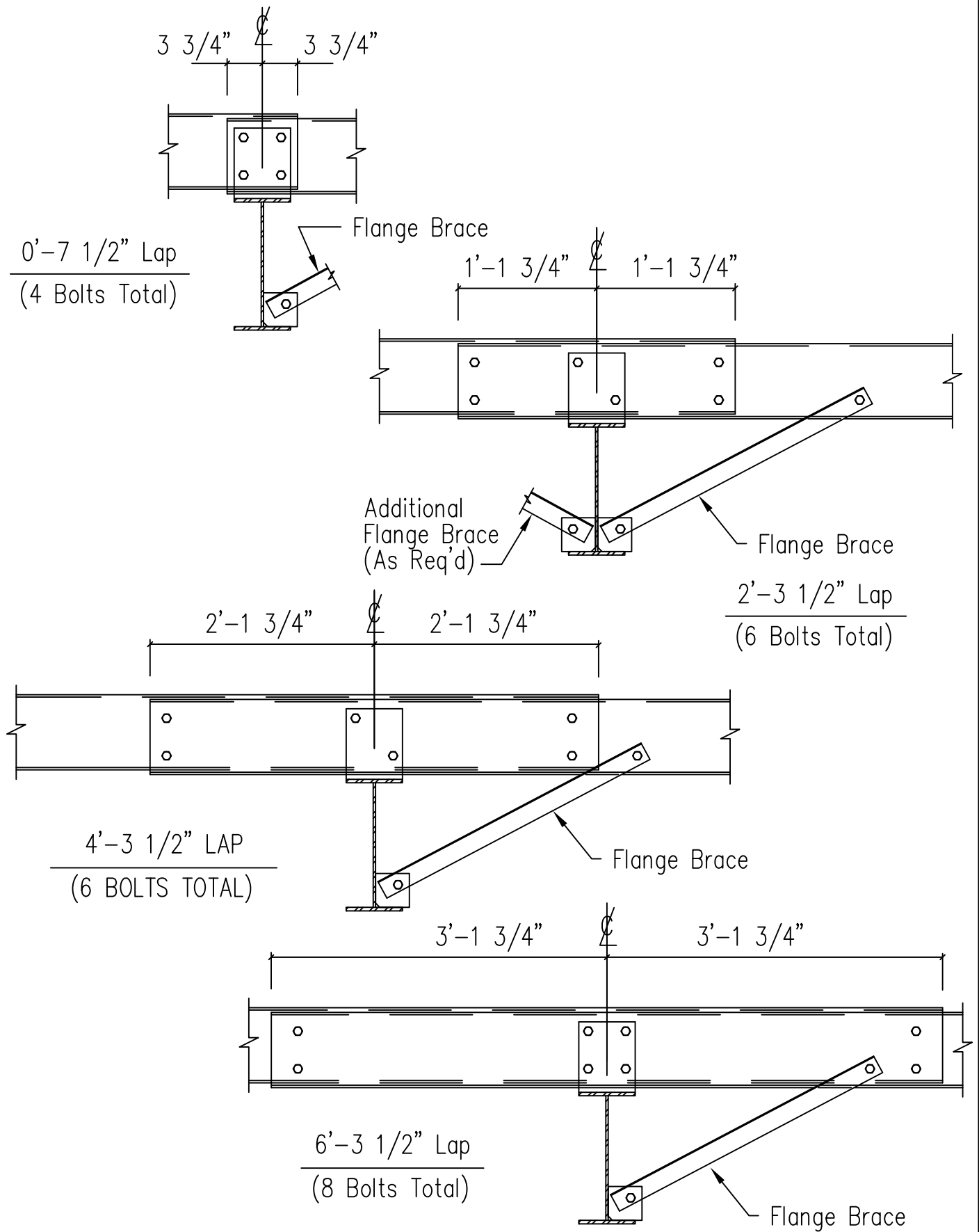
DRAWING NO.
SD12



Eave Strut to Hot Rolled Rafter Connection

DRAWING NO.

SD14

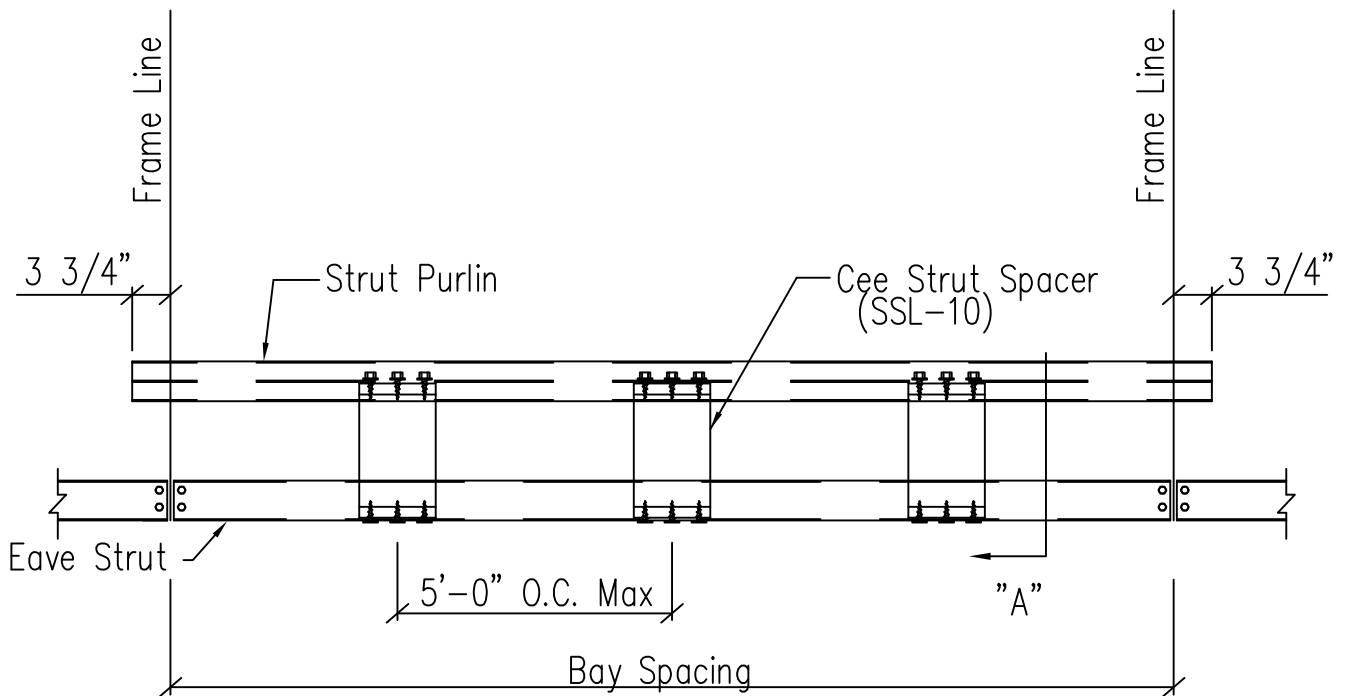
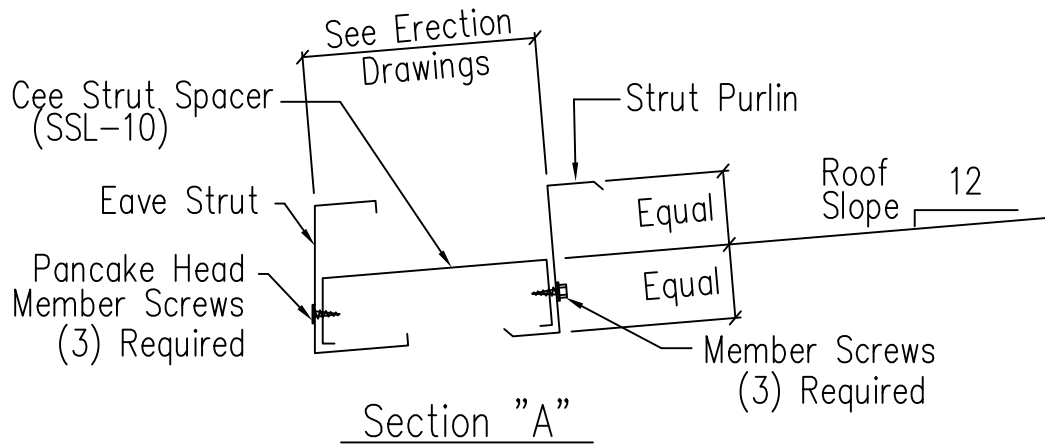


Note: All connection bolts are 1/2" x 1 1/4" machine bolts unless noted.

Interior Bay Purlin Framing

DRAWING NO.

SD50



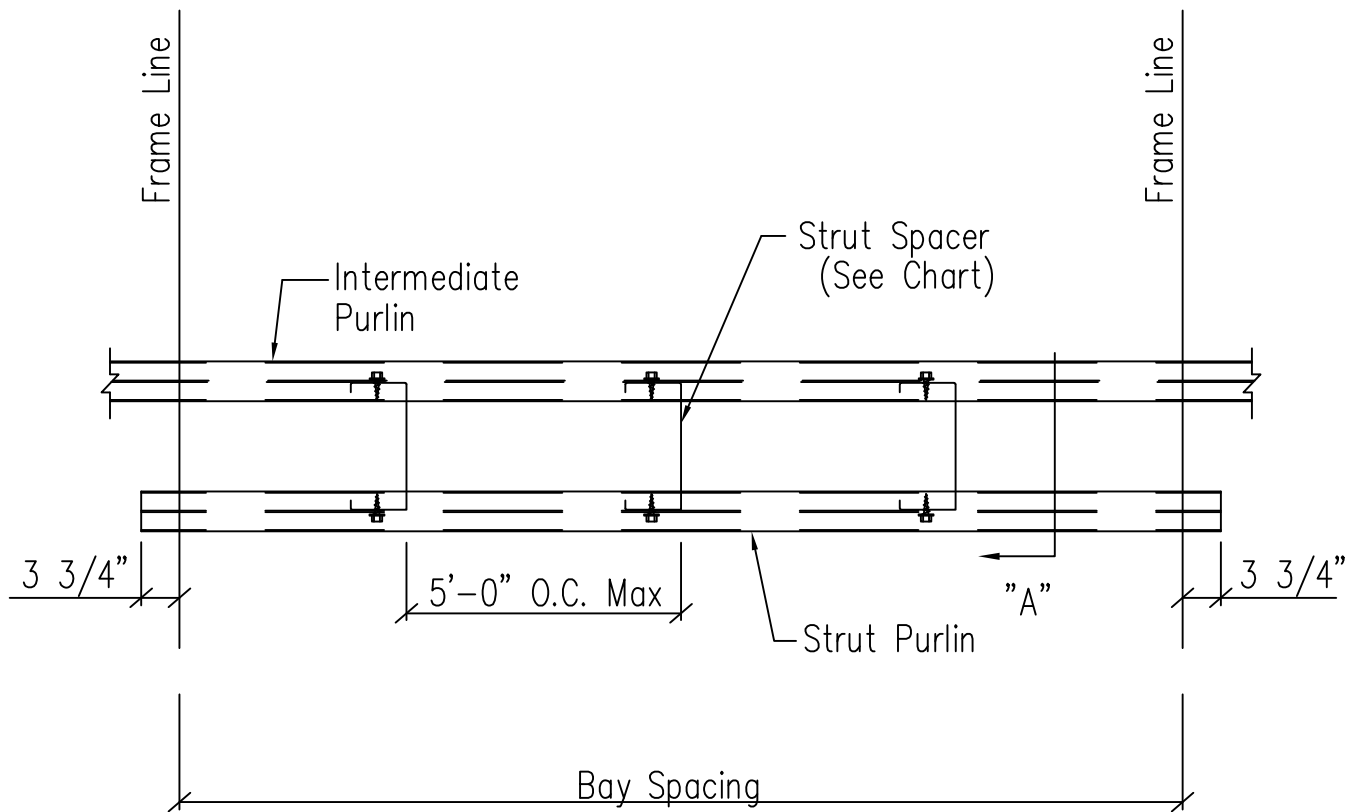
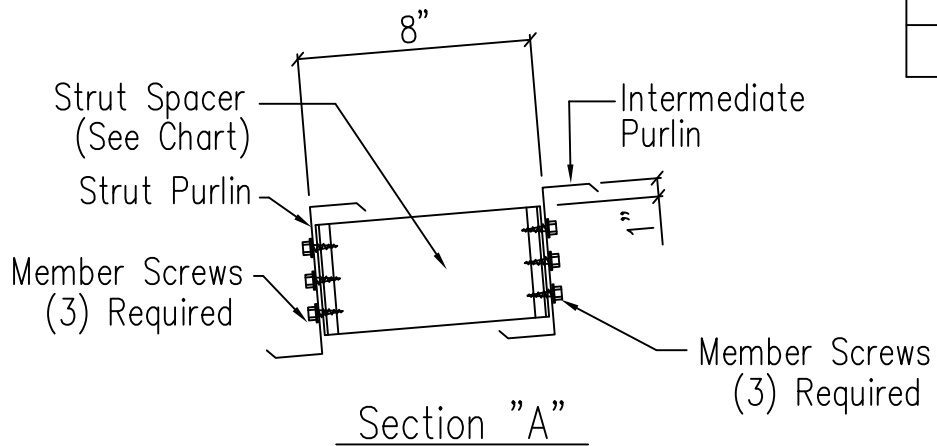
Strut Purlin and Spacer Detail

Low Eave

DRAWING NO.

SD107

Purlin	Mark
8"	SS8-6
10"	SS8-8
12"	SS8-10

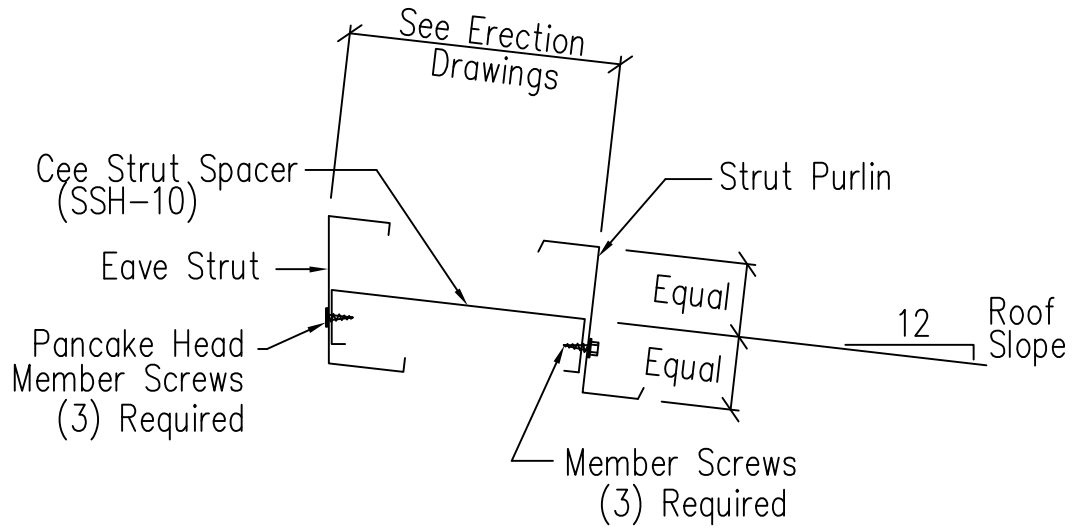


Strut Purlin and Spacer Detail

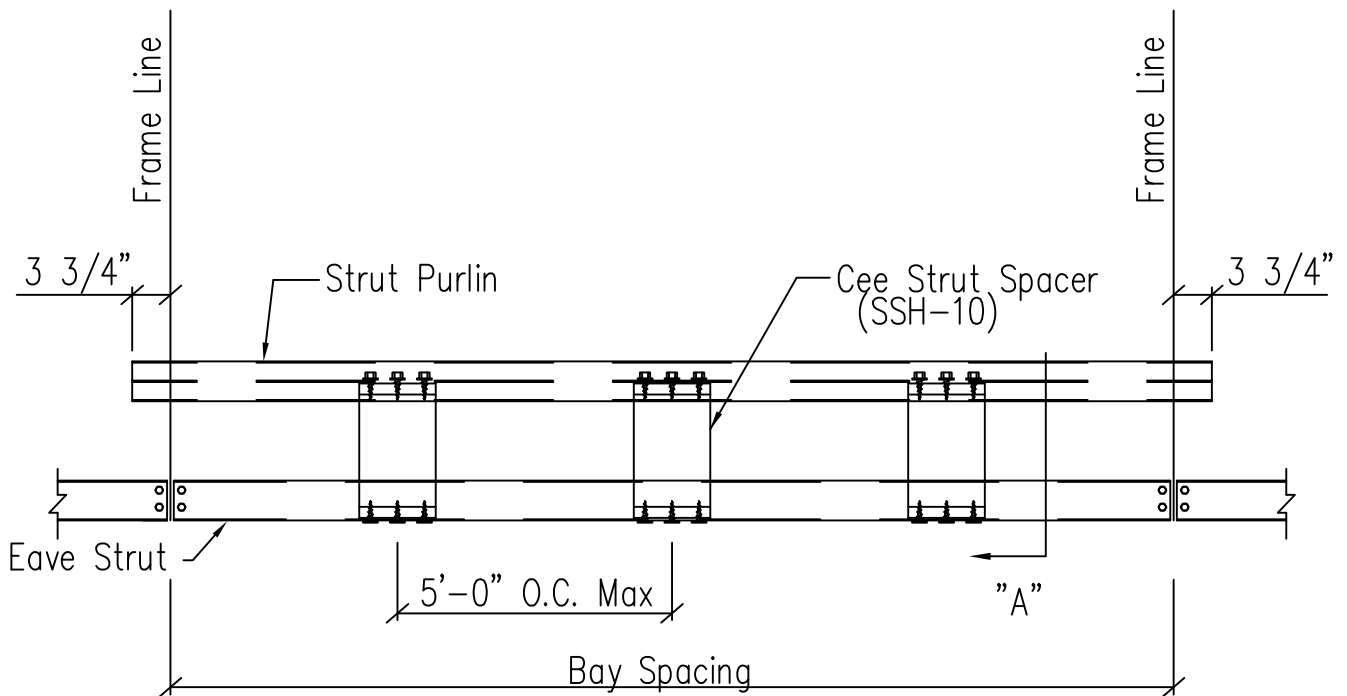
Interior

DRAWING NO.

SD108



Section "A"



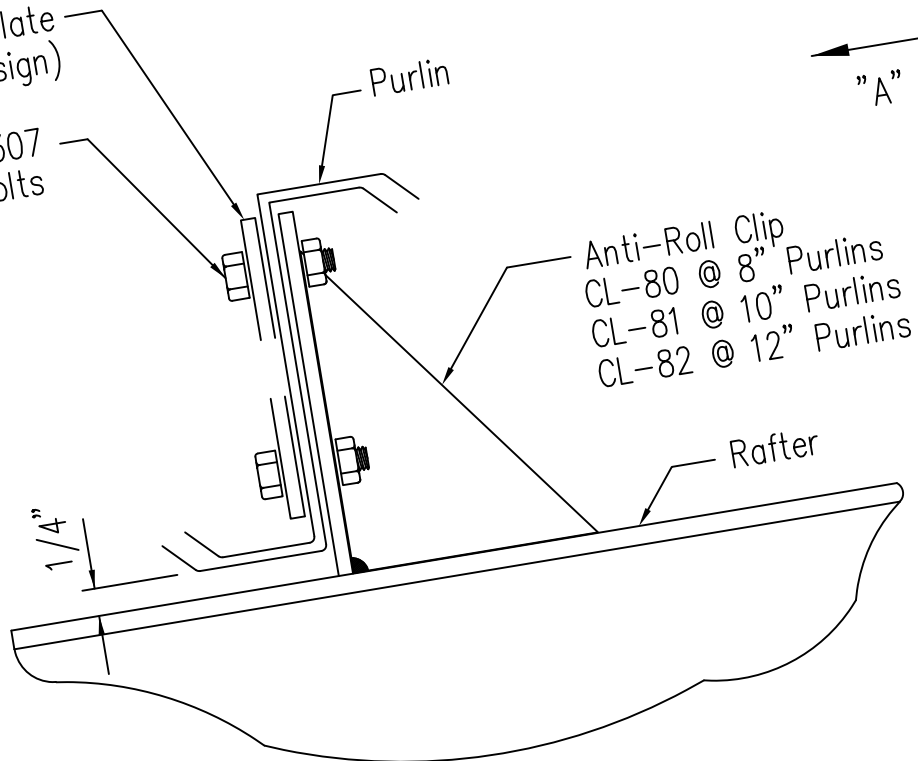
Strut Purlin and Spacer Detail

High Eave

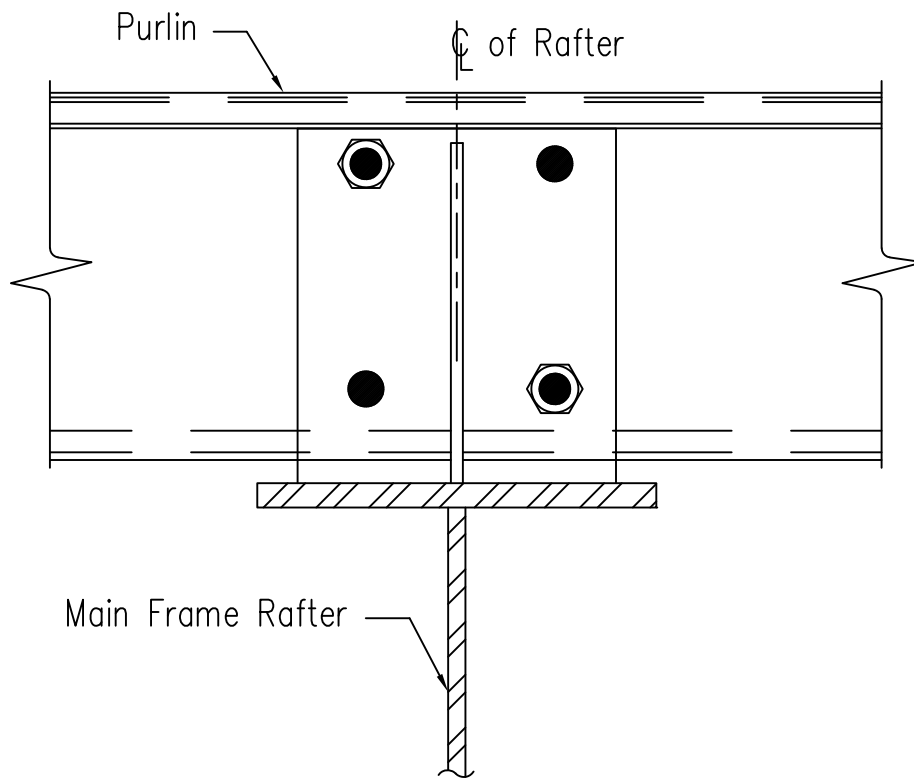
DRAWING NO.

SD109

1/4" Back-up Plate
(If Required by Design)
(2) 1/2" ϕ x 1 1/4" A307
M. Bolts



Anti-Roll Clip
CL-80 @ 8" Purlins
CL-81 @ 10" Purlins
CL-82 @ 12" Purlins



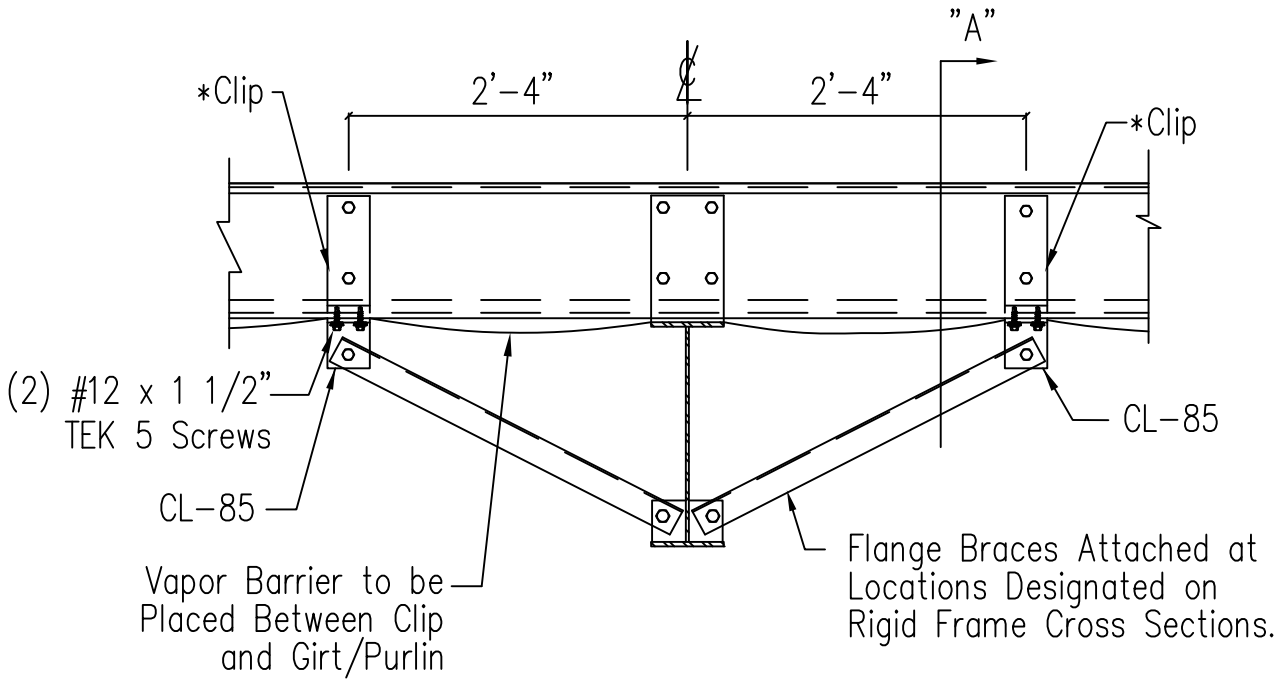
Main Frame Rafter

Section "A"

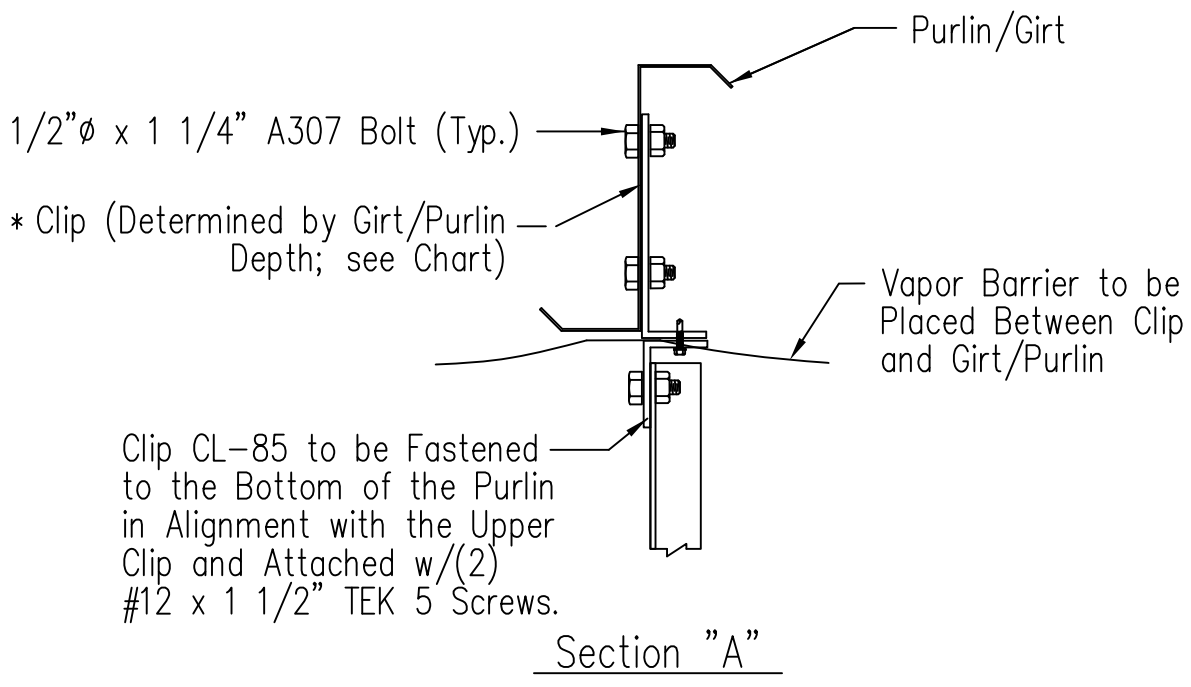
Purlin to Anti-Roll Clip Connection

DRAWING NO.

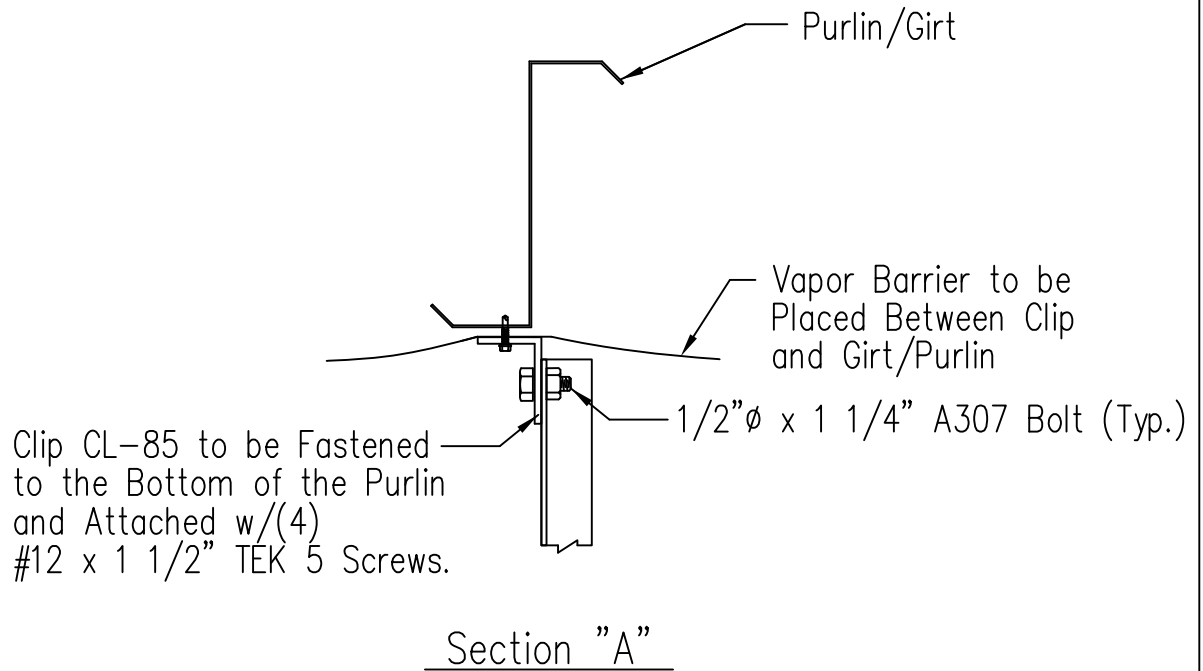
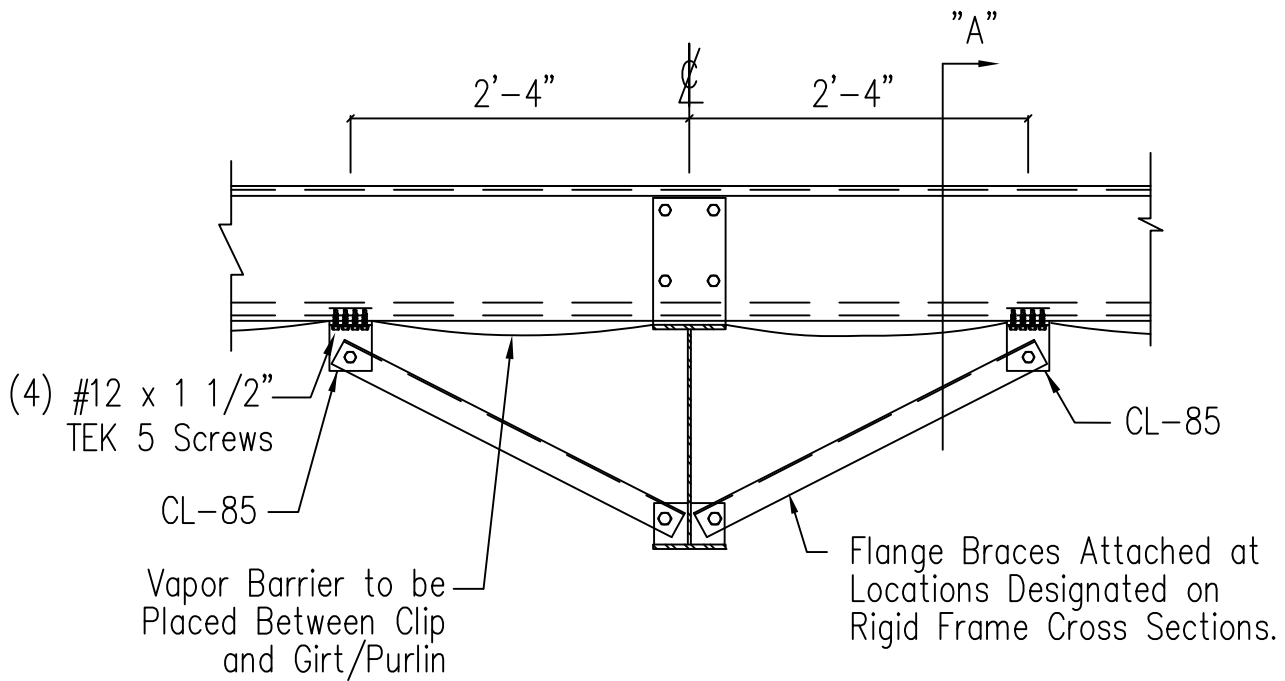
SD115



*Clip Table	
8" Girt/Purlin	CL-86
10" Girt/Purlin	CL-87
12" Girt/Purlin	CL-88



Note: All connection bolts are 1/2" x 1 1/4" machine bolts unless noted.

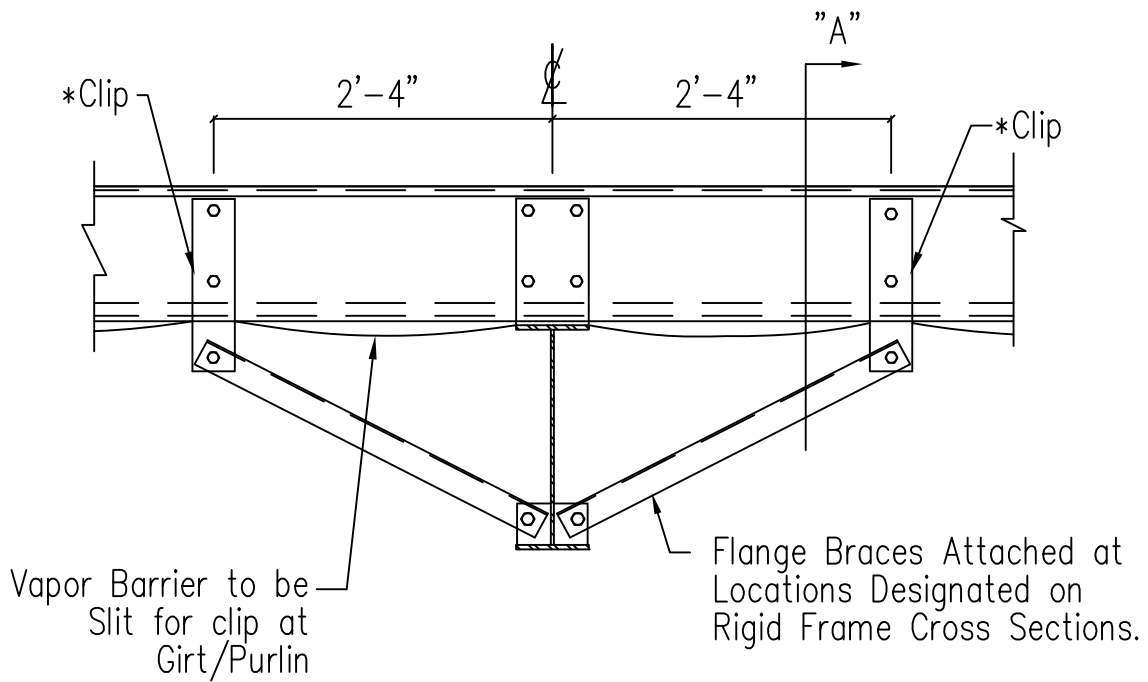


Note: All connection bolts are 1/2" x 1 1/4" machine bolts unless noted.

Interior Girt/Purlin Flange Brace Attachment for Insulation

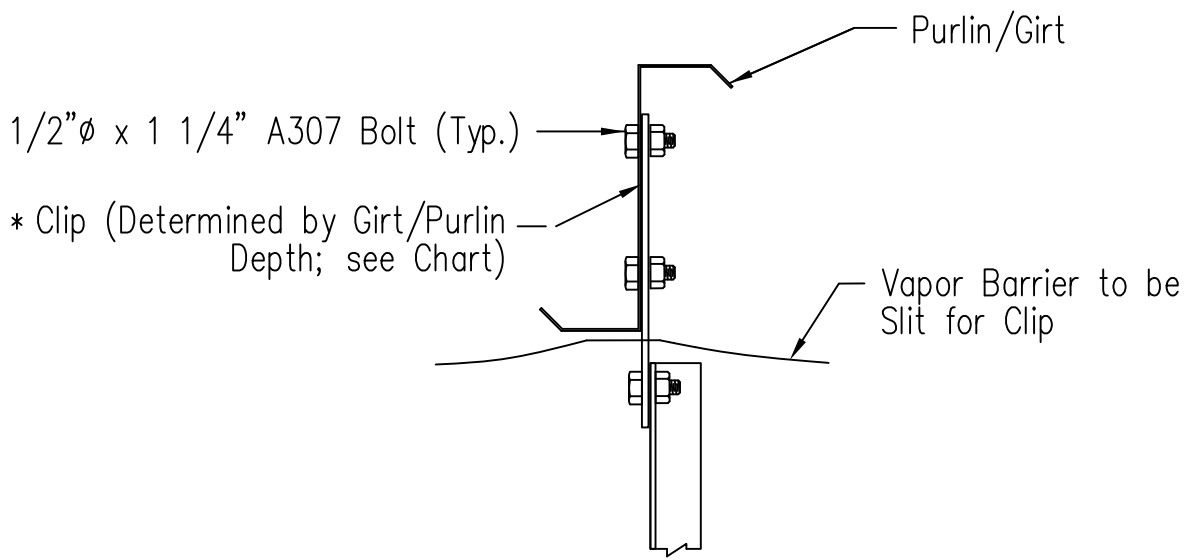
DRAWING NO.

SD162



ERECTOR NOTE:
When installing liner panels
precut slits in liner panel
before hanging overhead.

*Clip Table	
8" Girt/Purlin	CL-22
10" Girt/Purlin	CL-24
12" Girt/Purlin	CL-34



Section "A"

Note: All connection bolts are 1/2" x 1 1/4" machine bolts unless noted.

<p style="text-align: center;"><u>Interior Girt/Purlin Flange Brace Attachment for Insulation</u></p>	<p>DRAWING NO.</p> <p style="font-size: 2em; font-weight: bold;">SD163</p>
<p>Revised On : 02/08/24 Created On: 8/26/11</p>	