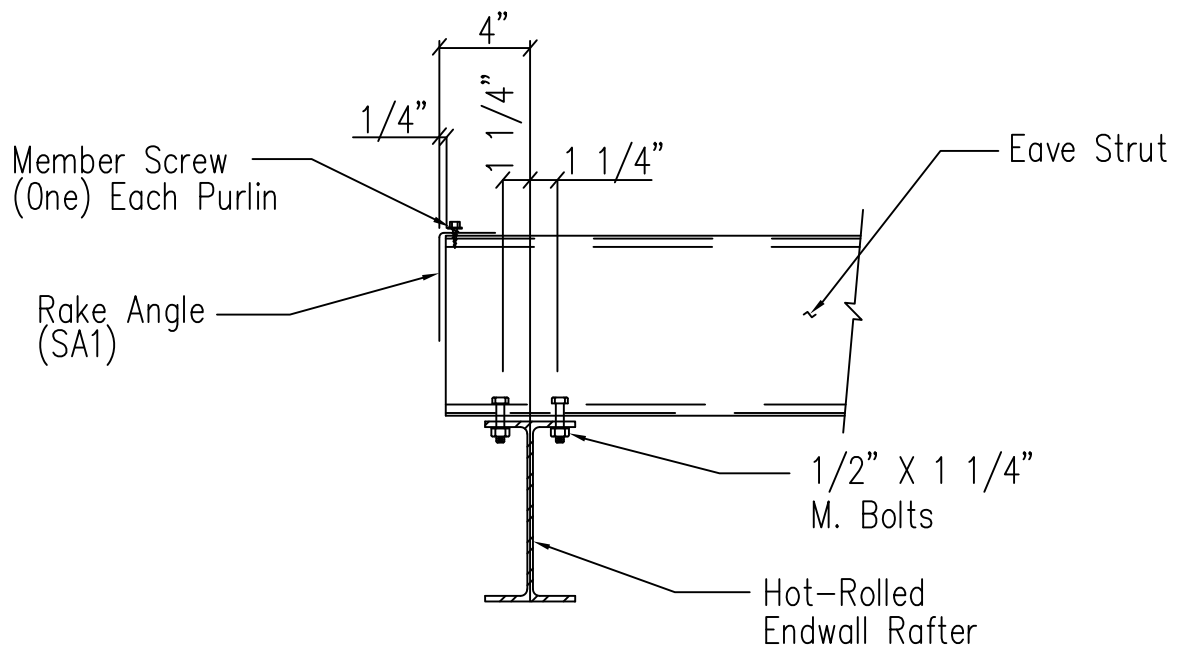
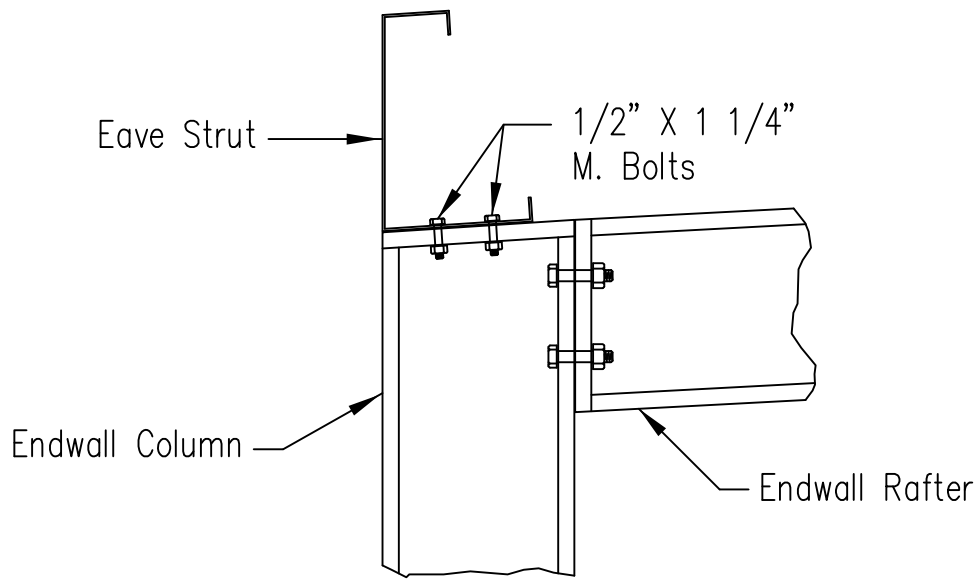


Section Thru Rake at Cold-Form Rafter

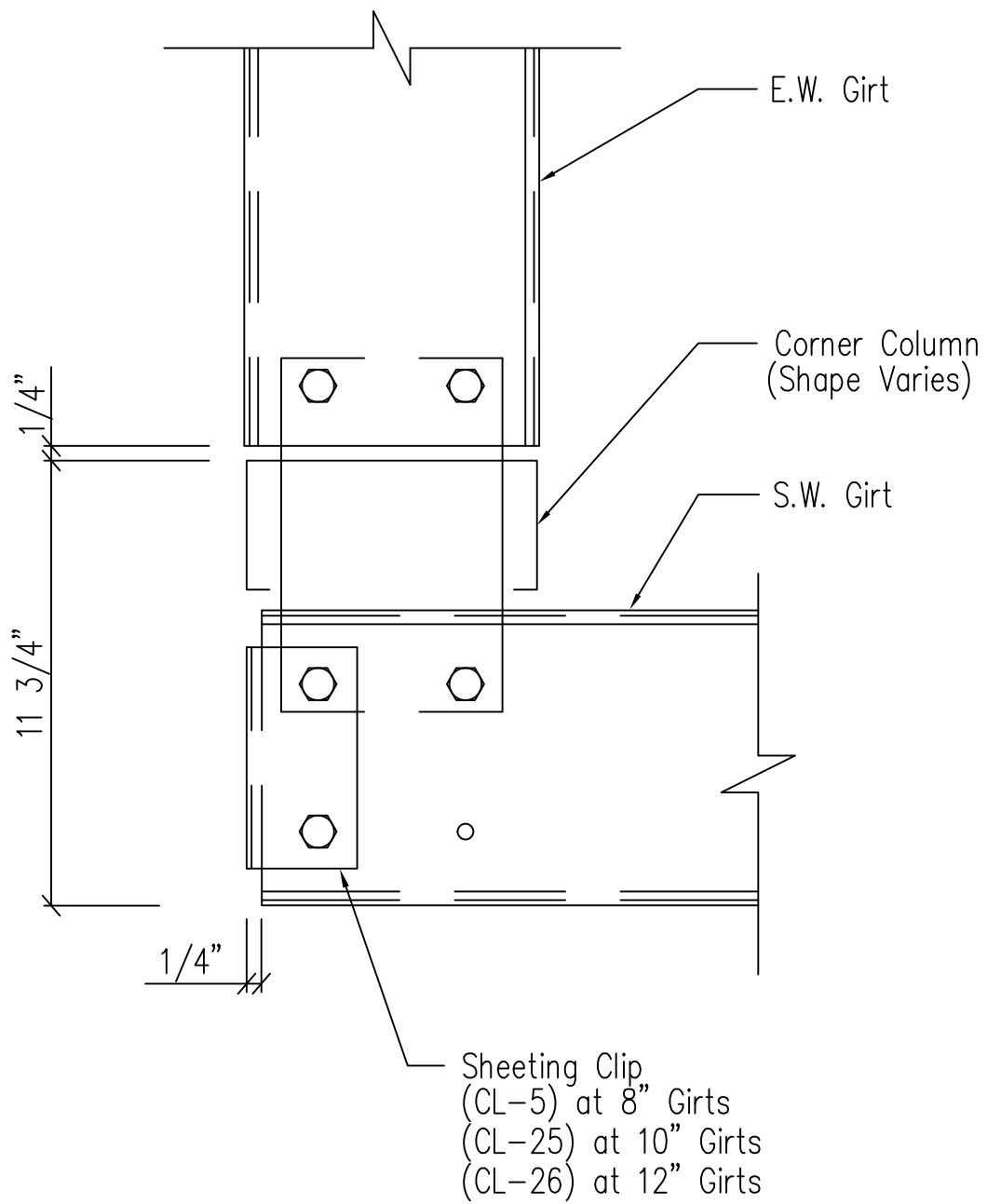
DRAWING NO.

SD1



Corner Column Connection WF Rafter/Column
Flush Sidewall

DRAWING NO.
SD12

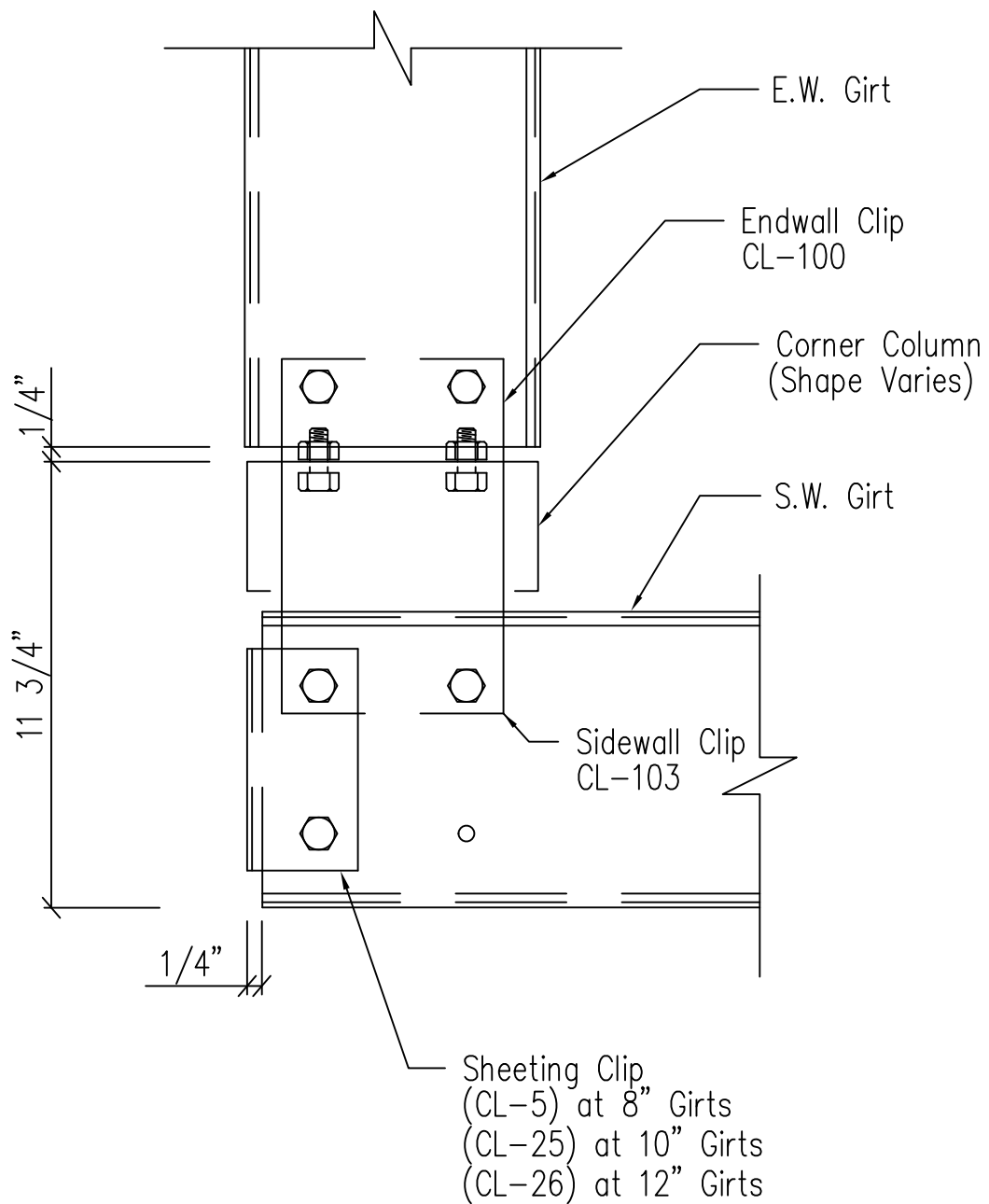


Note: All connection bolts are 1/2" x 1 1/4" machine bolts unless noted.

Section at "C" Corner Column
Flush Endwall

DRAWING NO.

SD21



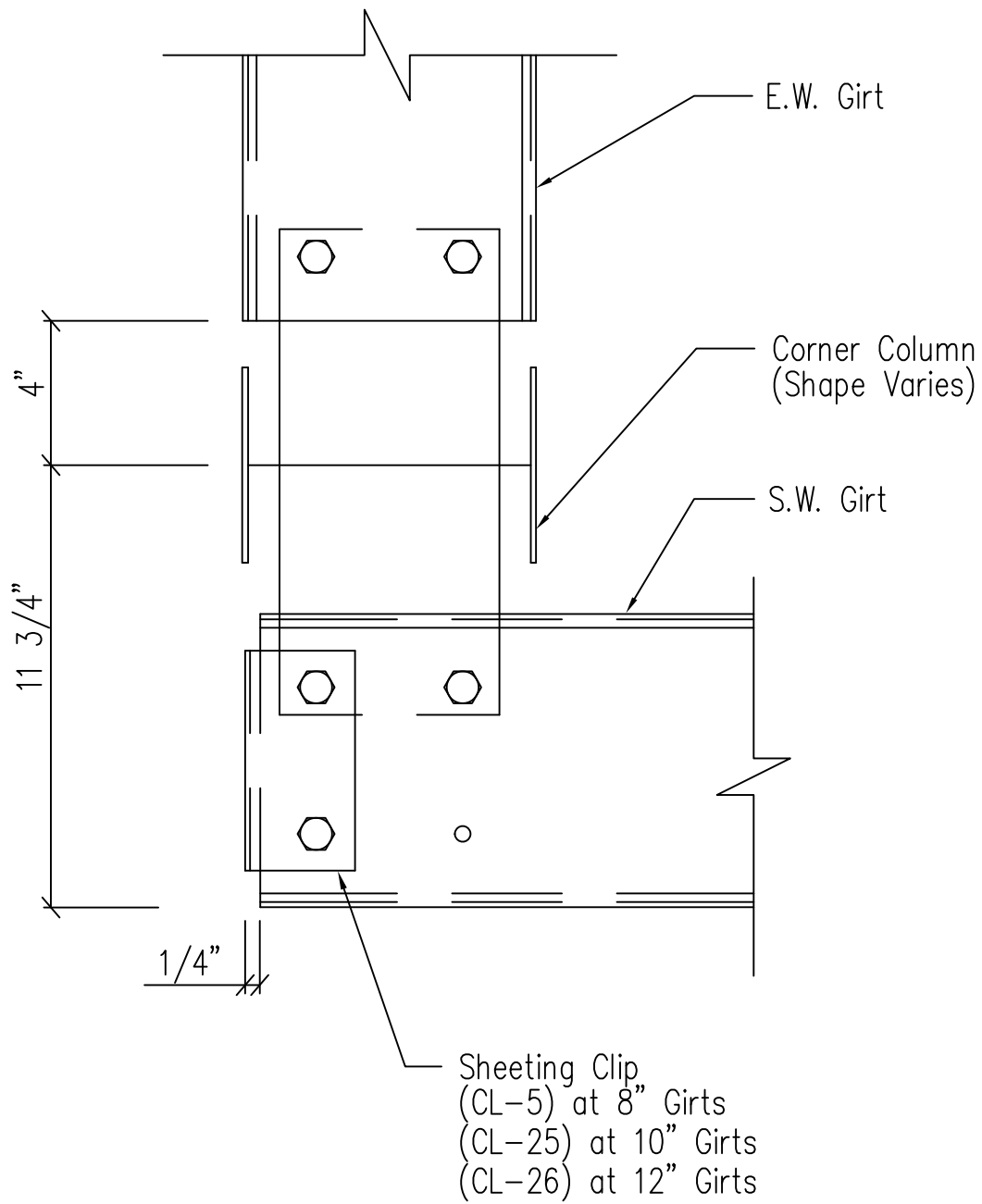
ERECTOR NOTE: IF CLIP BOXES ON BUILDING ELEVATION VIEW(S) ARE BELOW THE INTENDED GIRT LINE, THE CLIP(S) IN REFERENCE ARE TOED DOWN. IF ABOVE THE GIRT LINE, THEN TOED UP.

Note: All connection bolts are 1/2" x 1 1/4" machine bolts unless noted.

Section at "C" Corner Column
 Flush Endwall

DRAWING NO.

SD24



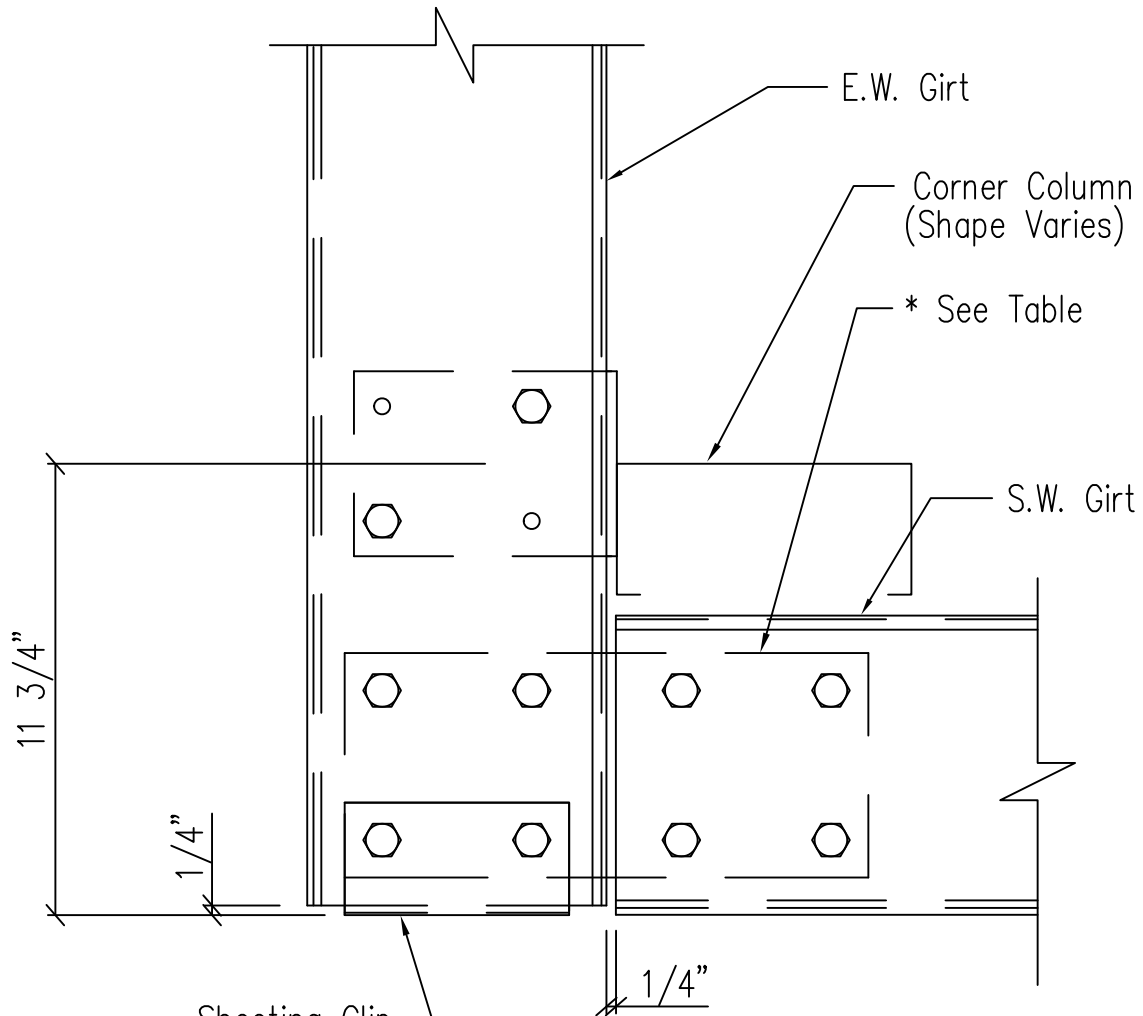
Note: All connection bolts are 1/2" x 1 1/4" machine bolts unless noted.

Section at Hot Rolled Corner Column

Flush Endwall

DRAWING NO.

SD25



Sheeting Clip
 (CL-5) at 8" Girts
 (CL-25) at 10" Girts
 (CL-26) at 12" Girts

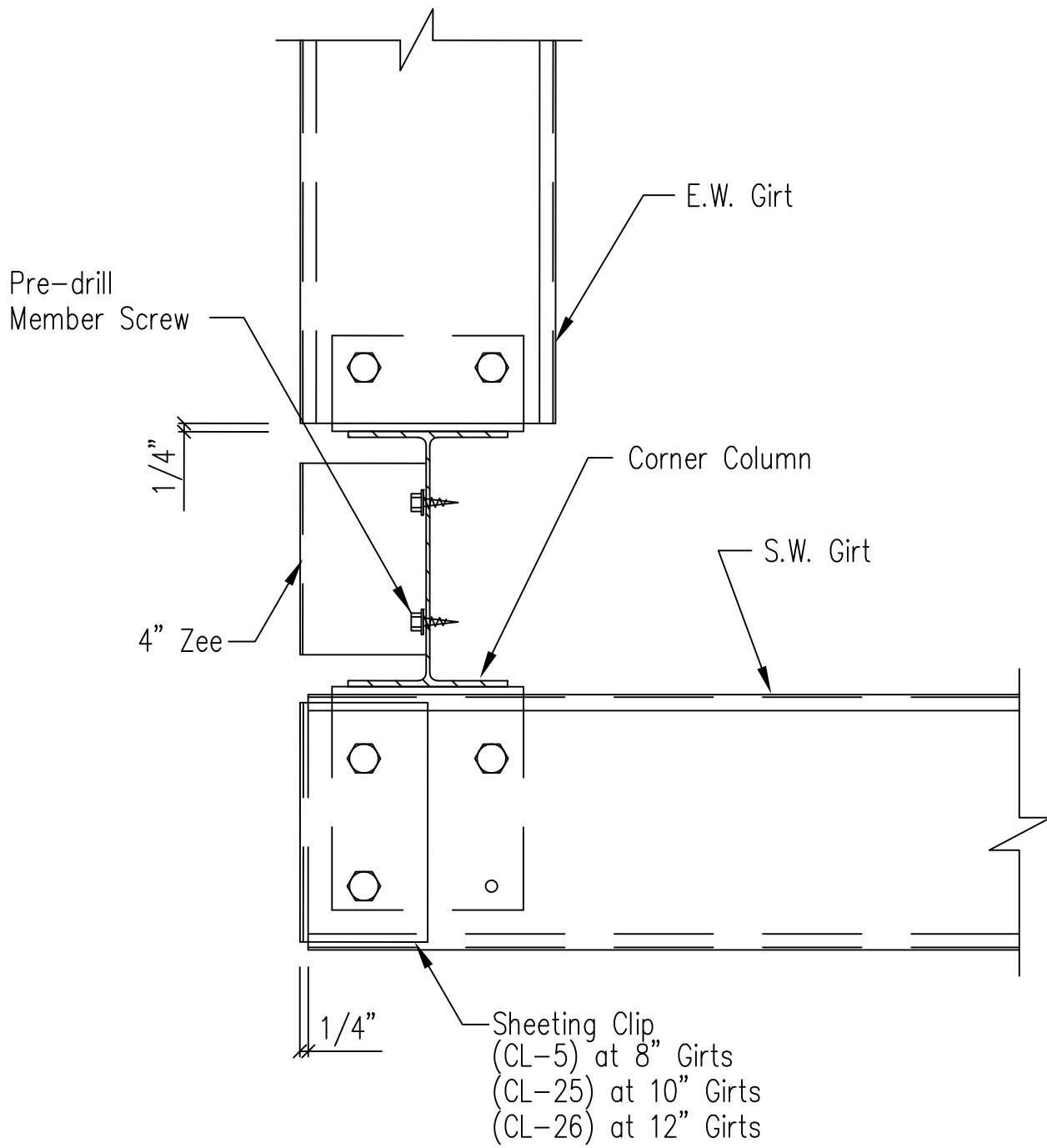
CLIP TABLE		
EW GIRT	SW GIRT	CLIP
8"	8"	CL-64
8"	10"	CL-65
10"	8"	CL-66
10"	10"	CL-67

Note: All connection bolts are 1/2" x 1 1/4" machine bolts unless noted.

Section at "C" Corner Column
 By-Pass Endwall

DRAWING NO.

SD26



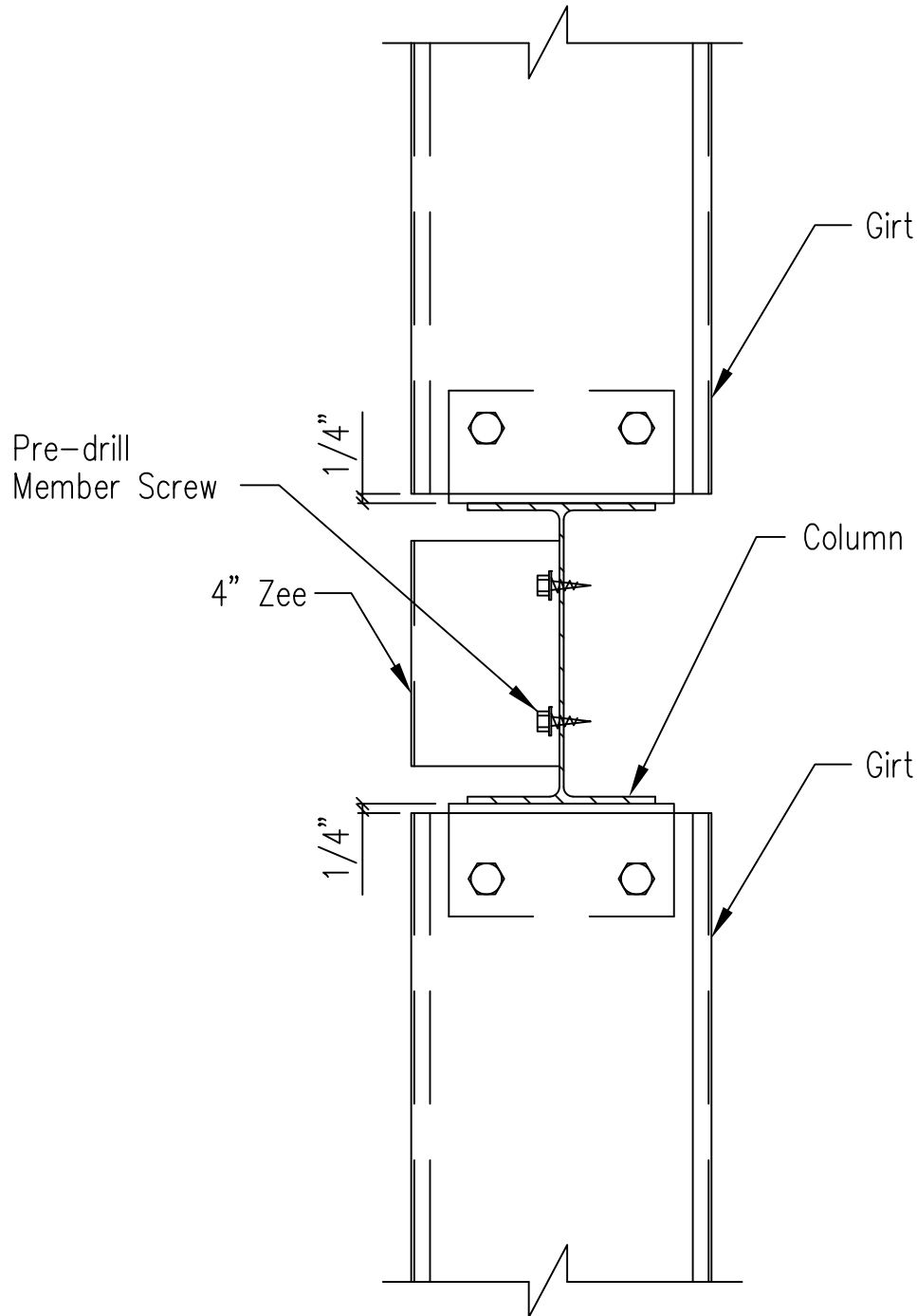
Note: All connection bolts are 1/2" x 1 1/4" machine bolts unless noted.

Section at Hot Rolled Corner Column

Flush Endwall - By-Pass Sidewall

DRAWING NO.

SD30



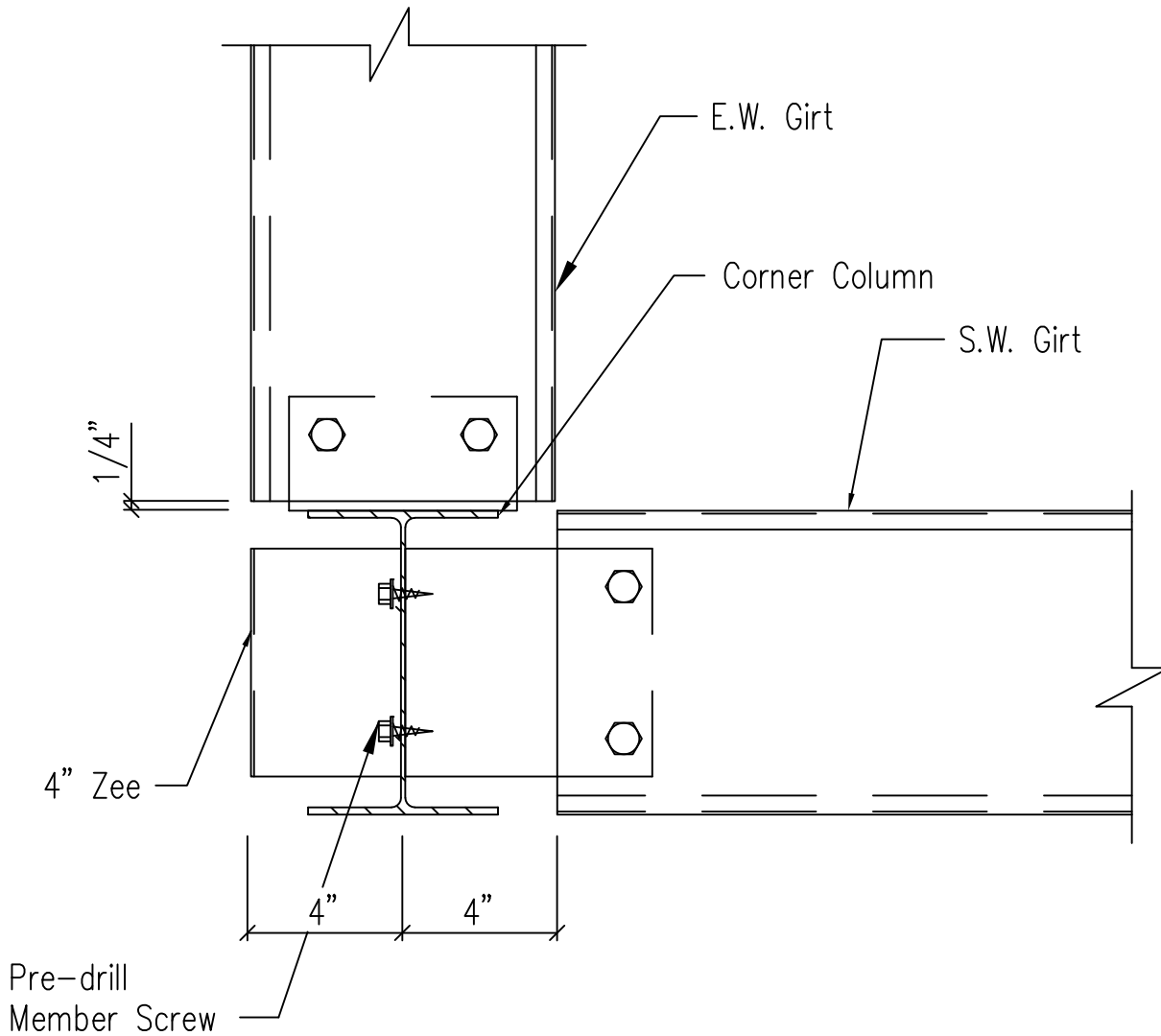
Note: All connection bolts are 1/2" x 1 1/4" machine bolts unless noted.

Section at Hot Rolled Corner Column

Flush Endwall - Open By-Pass Sidewall

DRAWING NO.

SD32



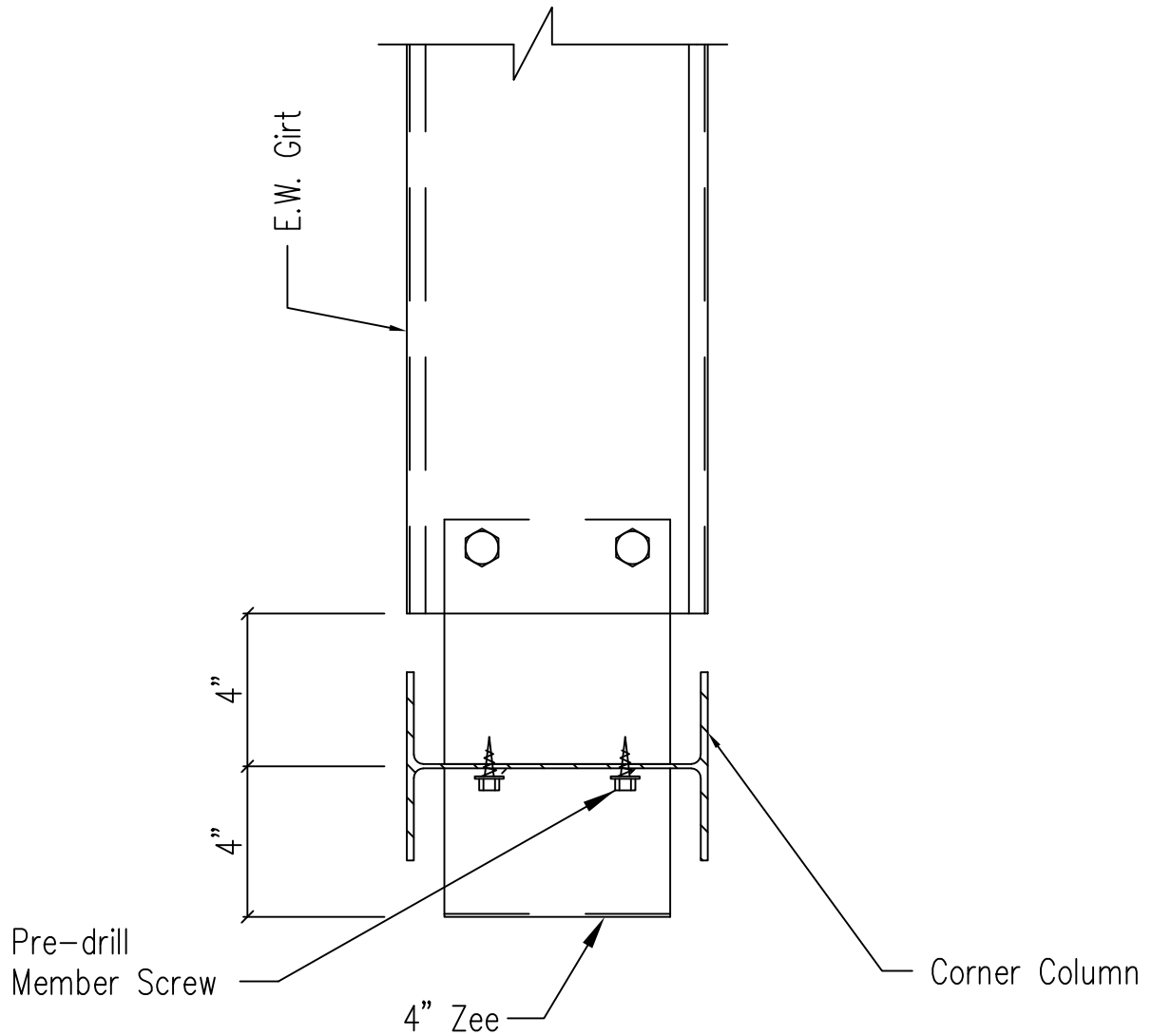
Note: All connection bolts are 1/2" x 1 1/4" machine bolts unless noted.

Section at Hot Rolled Corner Column

Flush Endwall - Flush Sidewall

DRAWING NO.

SD33



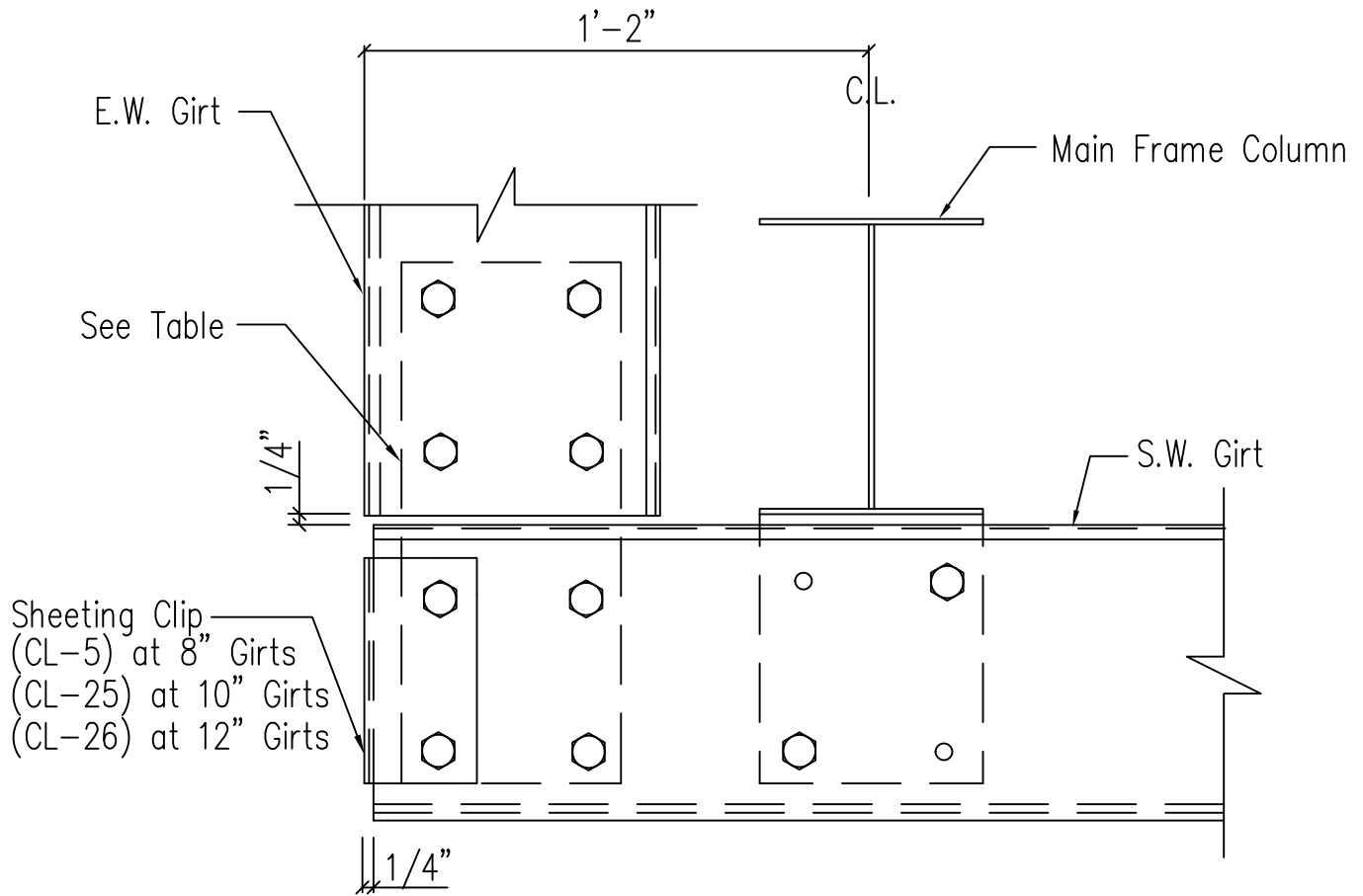
Note: All connection bolts are 1/2" x 1 1/4" machine bolts unless noted.

Section at Hot Rolled Corner Column

Flush Endwall - Flush Sidewall - Open Sidewall

DRAWING NO.

SD34



Sheeting Clip
 (CL-5) at 8" Girts
 (CL-25) at 10" Girts
 (CL-26) at 12" Girts

CLIP TABLE		
SW GIRT	EW. GIRT	CLIP
8"	8"	CL-64
8"	10"	CL-65
10"	8"	CL-66
10"	10"	CL-67

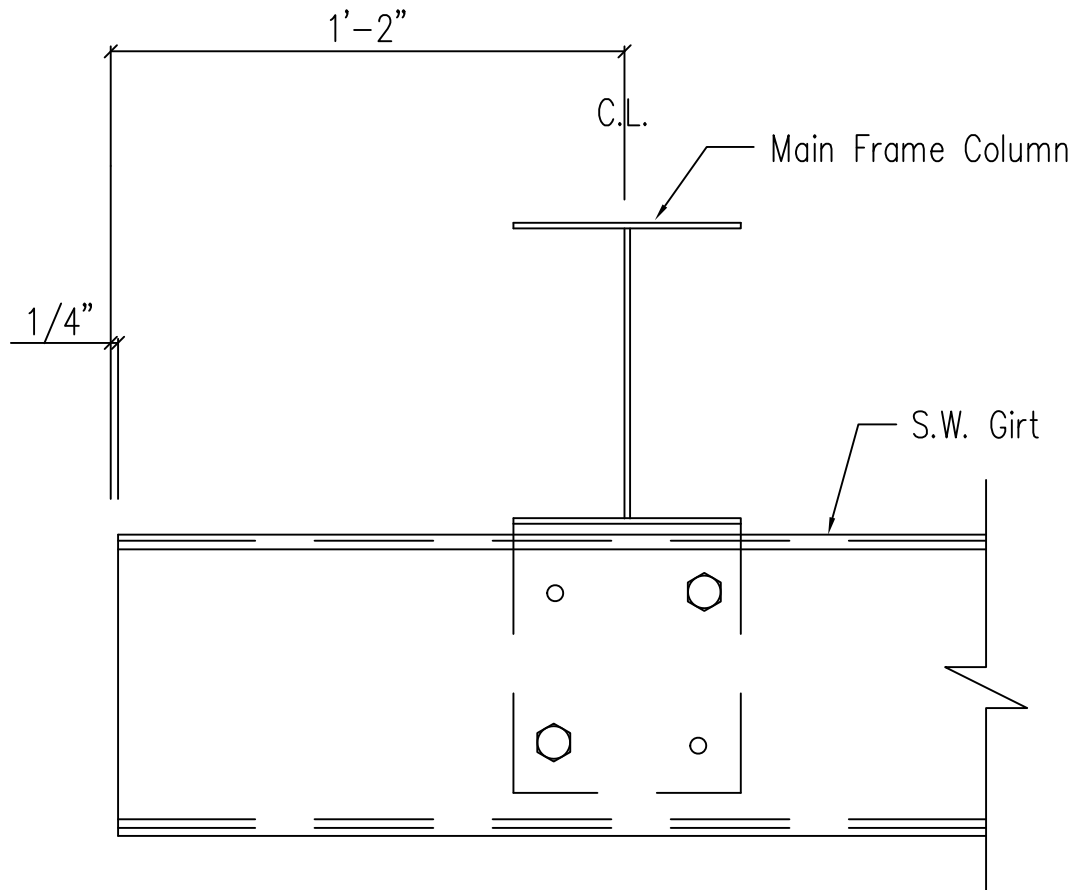
Note: All connection bolts are 1/2" x 1 1/4" machine bolts unless noted.

Section at MF Corner Column

Flush Endwall

DRAWING NO.

SD36



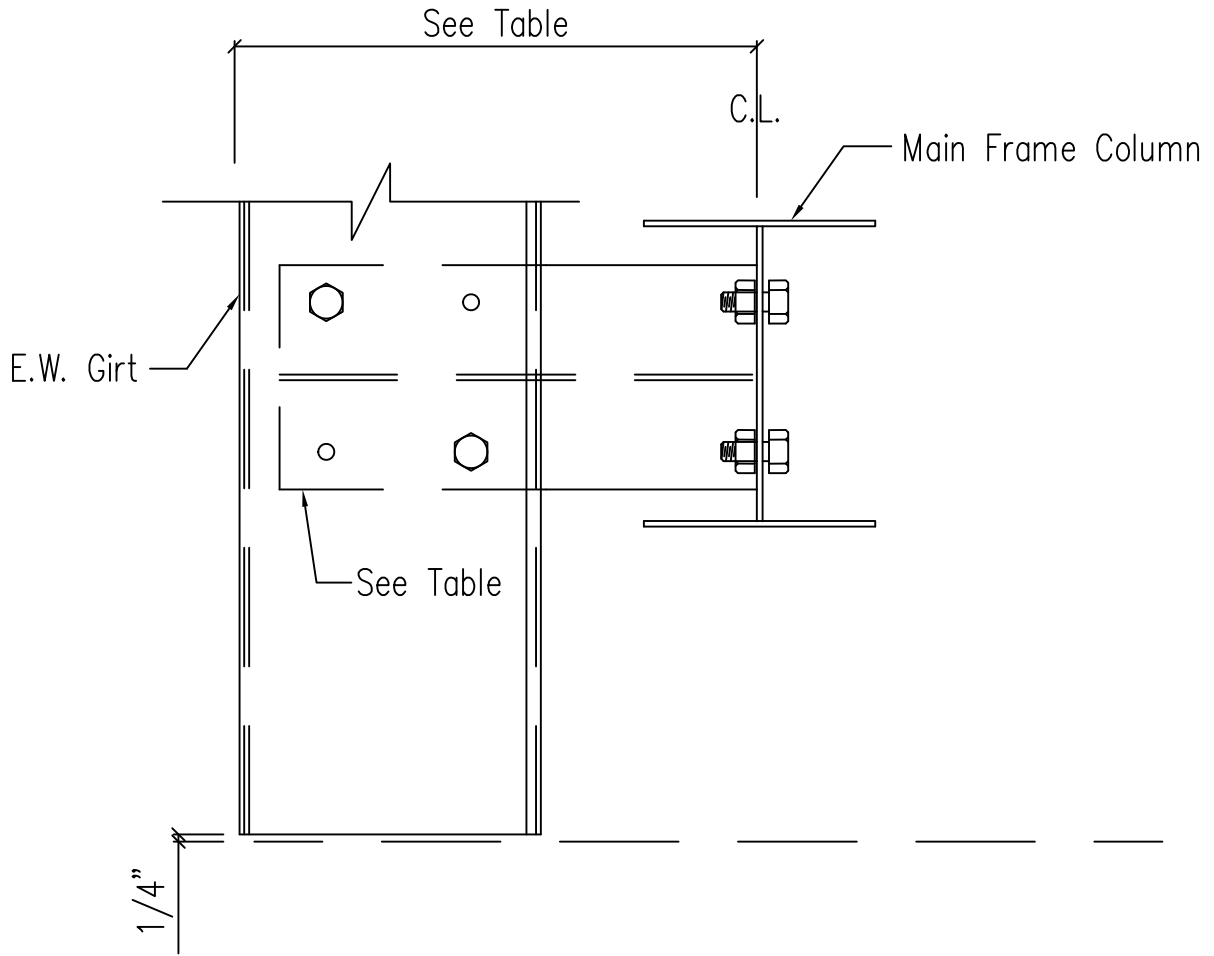
Note: All connection bolts are 1/2" x 1 1/4" machine bolts unless noted.

Section at Rigid Frame Corner Column

Flush Endwall - Open By-Pass Sidewall

DRAWING NO.

SD37



GIRT DEPTH	CLIP	DIMENSION
8"	CL-61	1'-2"
10"	CL-62	1'-2"
1'-0"	CL-61	1'-4"

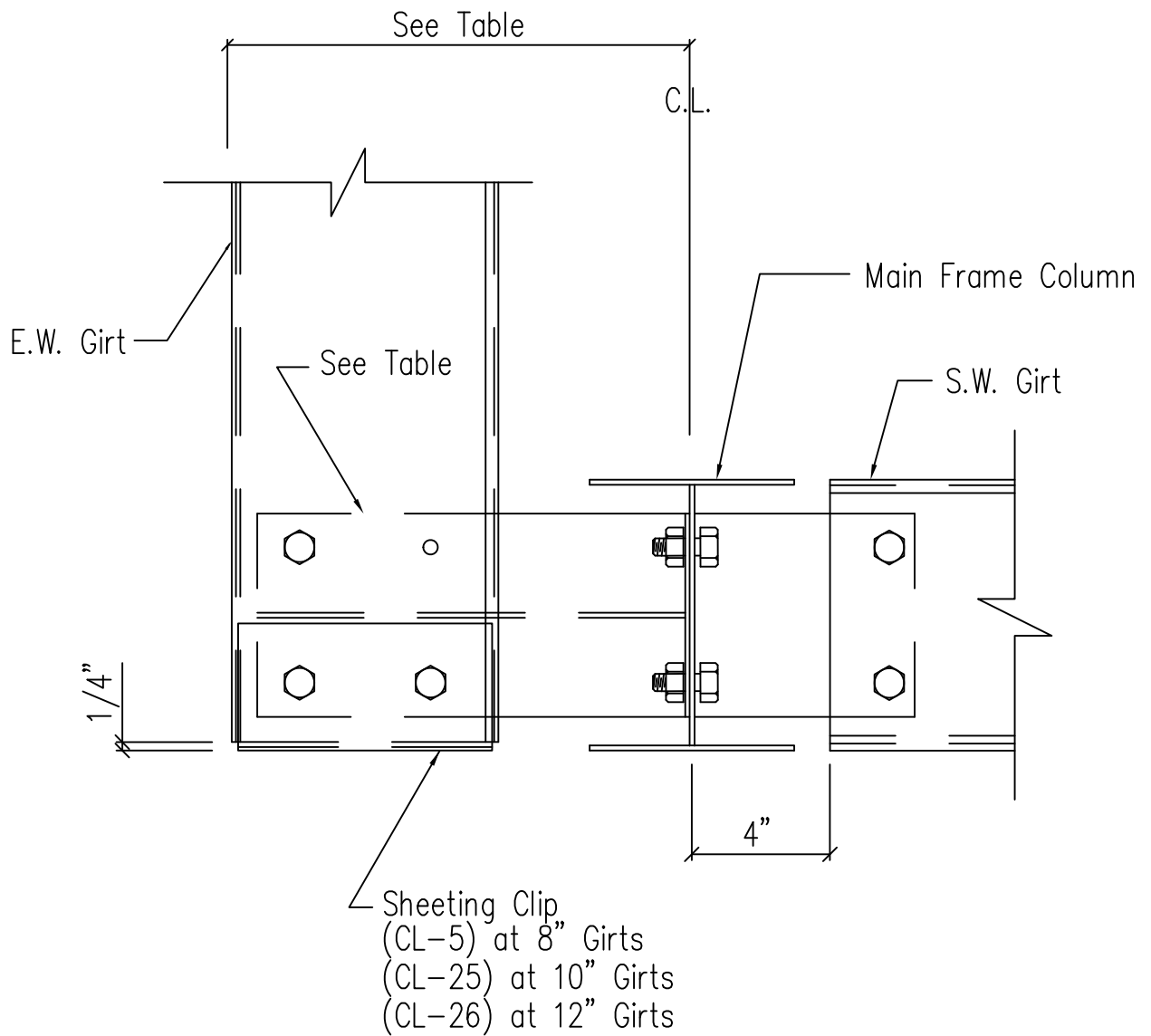
Note: All connection bolts are 1/2" x 1 1/4" machine bolts unless noted.

Section at MF Corner Column

Flush Endwall - Open By-Pass Sidewall

DRAWING NO.

SD38



GIRT DEPTH	CLIP	DIMENSION
8"	CL-61	1'-2"
10"	CL-62	1'-2"
1'-0"	CL-61	1'-4"

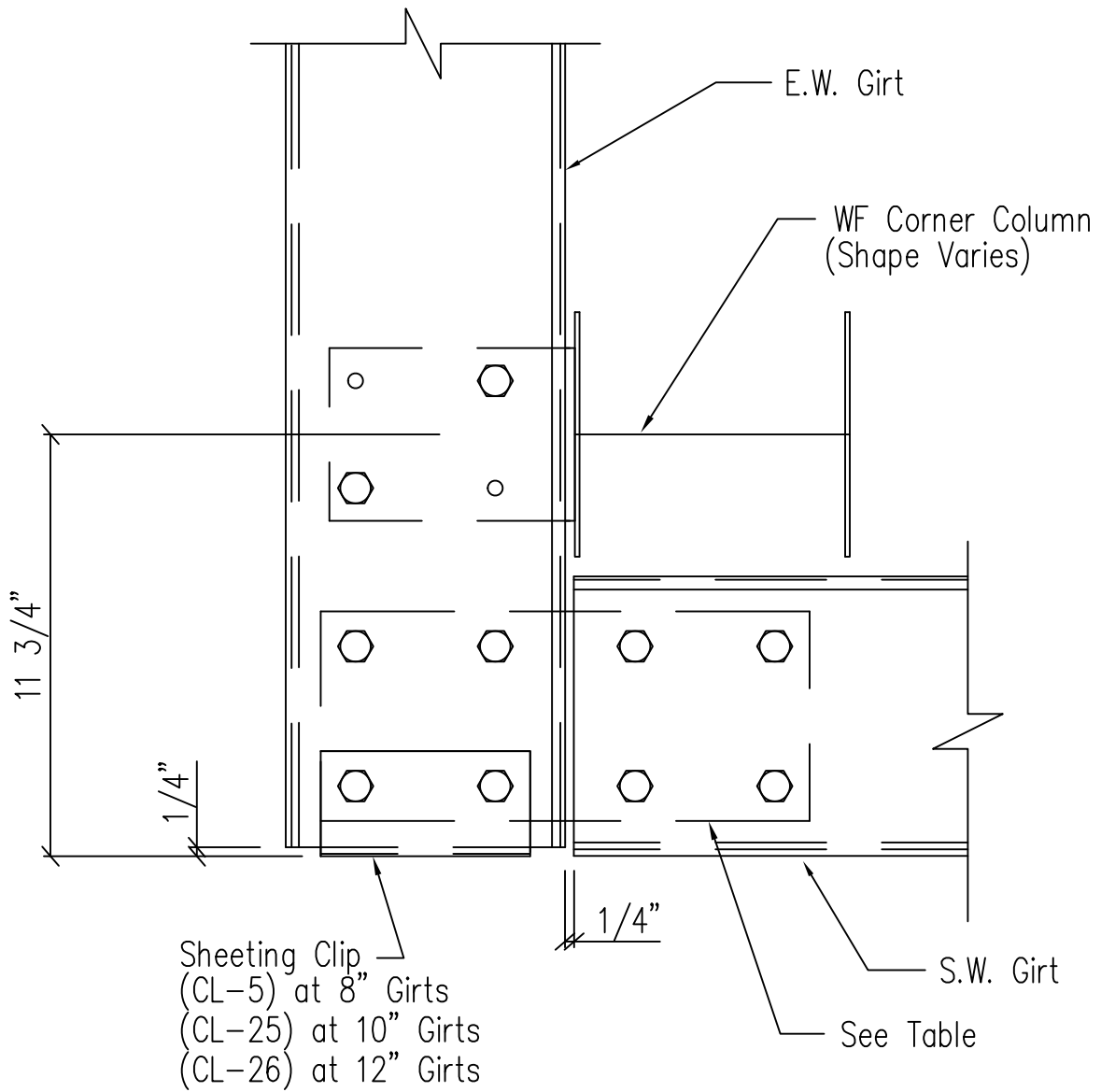
Note: All connection bolts are 1/2" x 1 1/4" machine bolts unless noted.

Section at MF Corner Column

By-Pass Endwall - Flush Sidewall

DRAWING NO.

SD39



CLIP TABLE		
EW GIRT	SW GIRT	CLIP
8"	8"	CL-64
8"	10"	CL-65
10"	8"	CL-66
10"	10"	CL-67

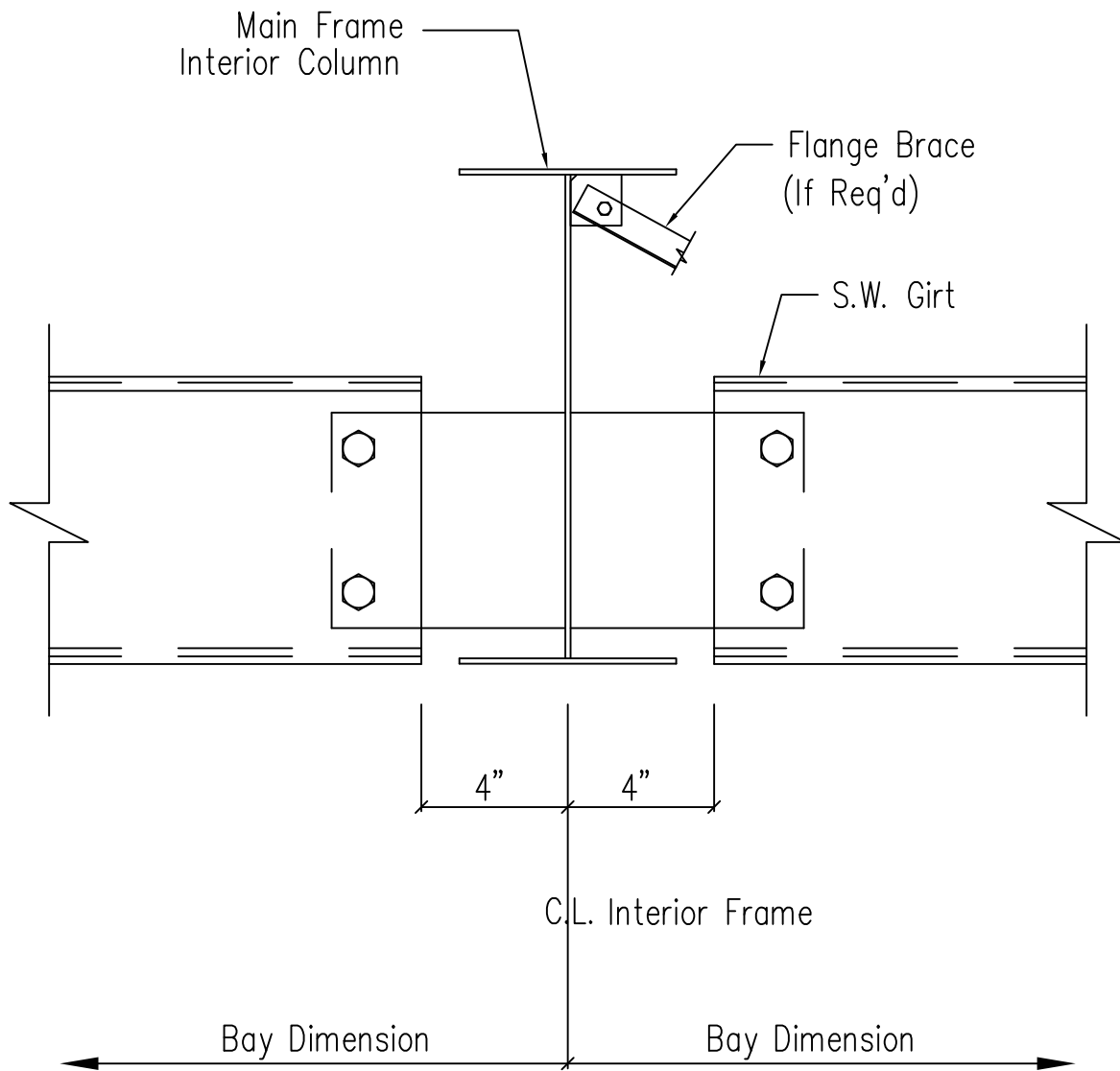
Note: All connection bolts are 1/2" x 1 1/4" machine bolts unless noted.

Section at W.F. Corner Column

By-Pass Endwall

DRAWING NO.

SD42



Note: All connection bolts are 1/2" x 1 1/4" machine bolts unless noted.

Section at Interior MF Column

Flush Sidewall

DRAWING NO.

SD49

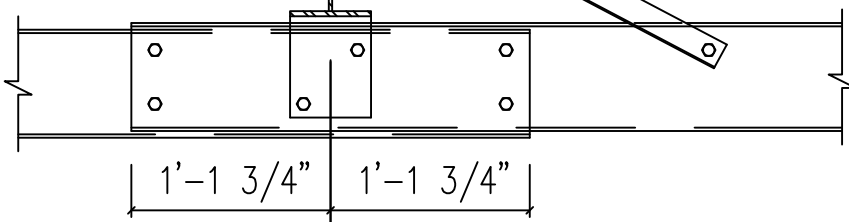
Additional
Flange Brace
(As Req'd)

Flange Brace

Flange Brace

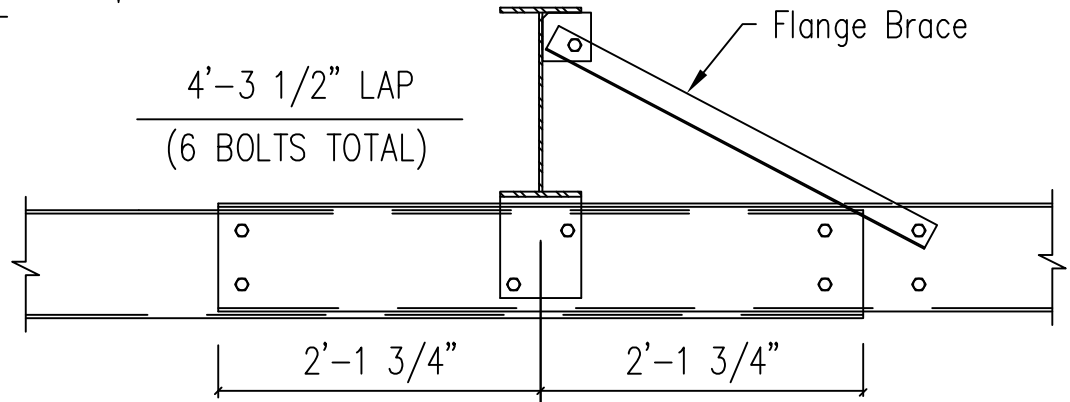
3 3/4" | 3 3/4"

0'-7 1/2" Lap
(4 Bolts Total)

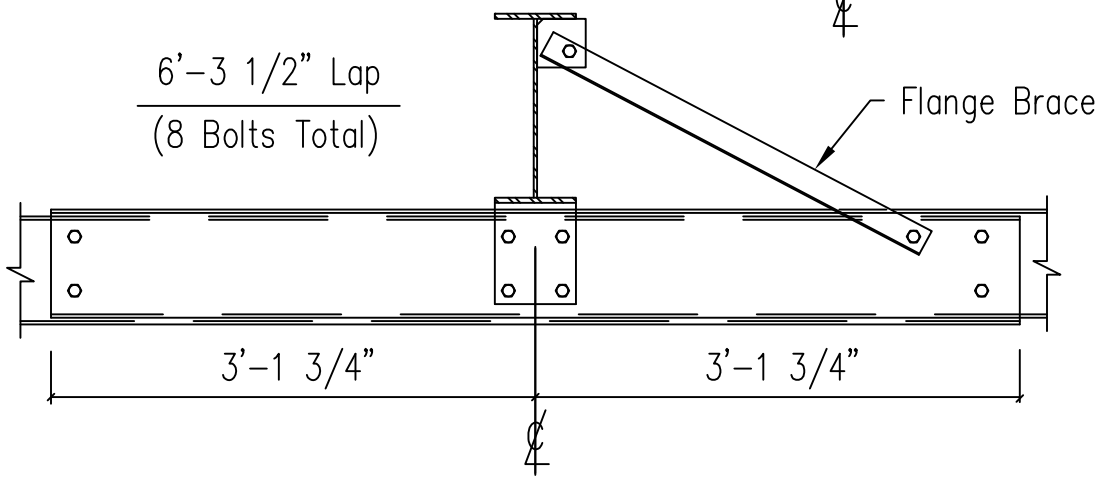


2'-3 1/2" Lap
(6 Bolts Total)

4'-3 1/2" LAP
(6 BOLTS TOTAL)



6'-3 1/2" Lap
(8 Bolts Total)

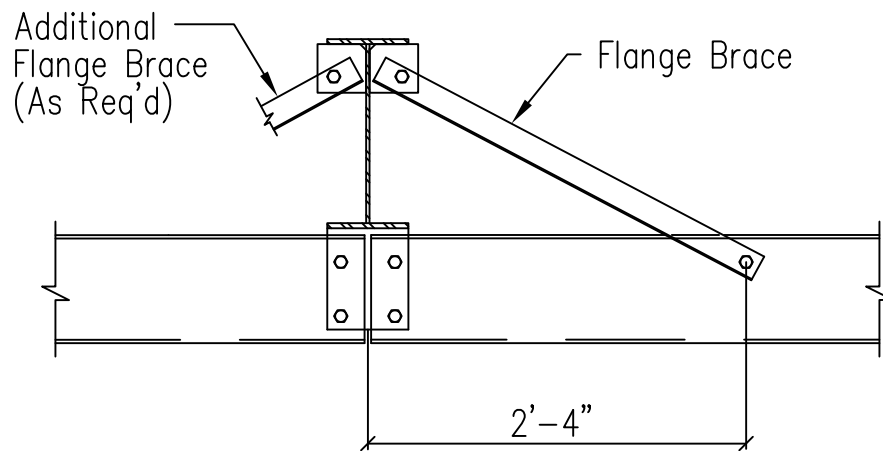


Note: All connection bolts are 1/2" x 1 1/4" machine bolts unless noted.

Interior Bay Girt Framing

DRAWING NO.

SD51



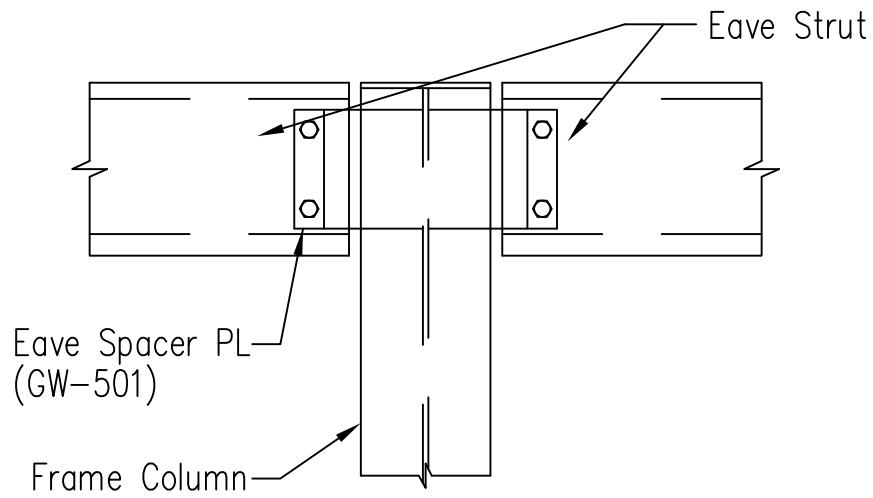
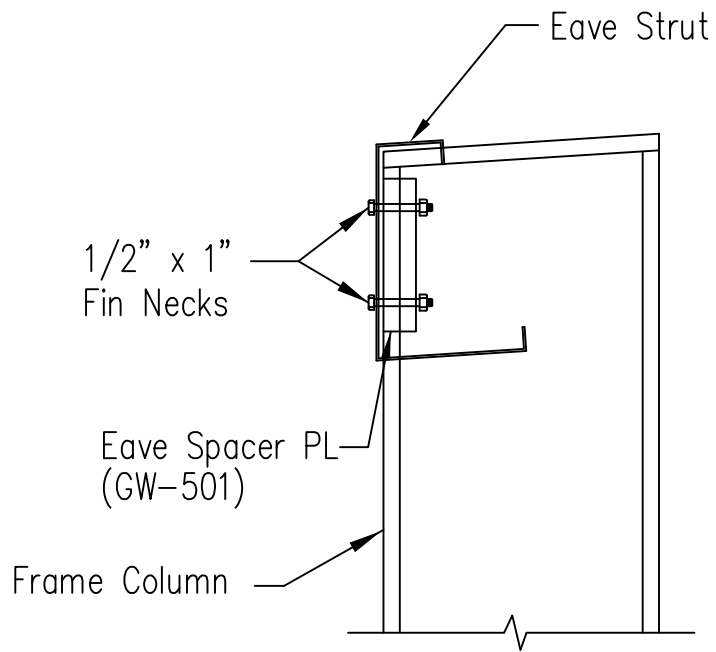
(4 Bolts Total)

Note: All connection bolts are 1/2" x 1 1/4" machine bolts unless noted.

Simple Span Girt Framing

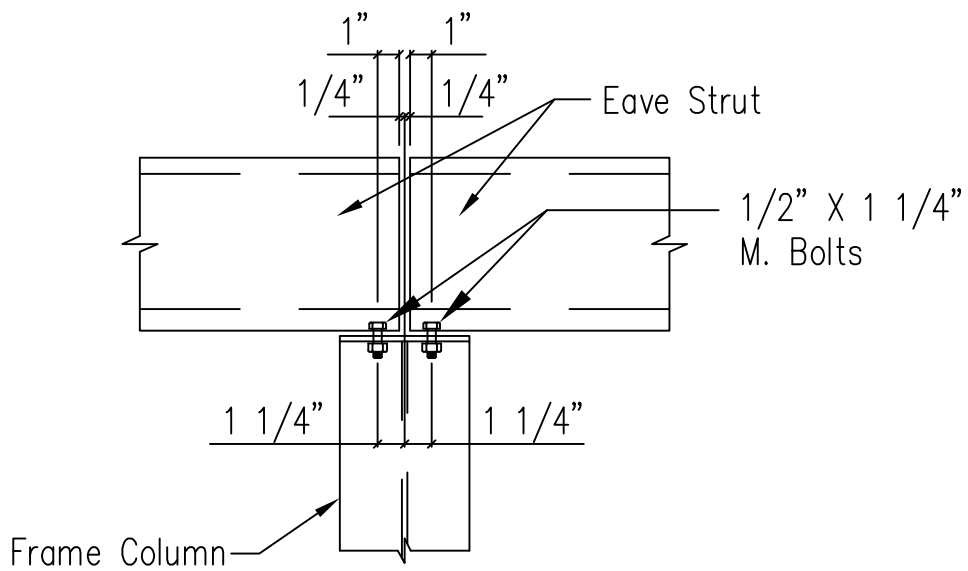
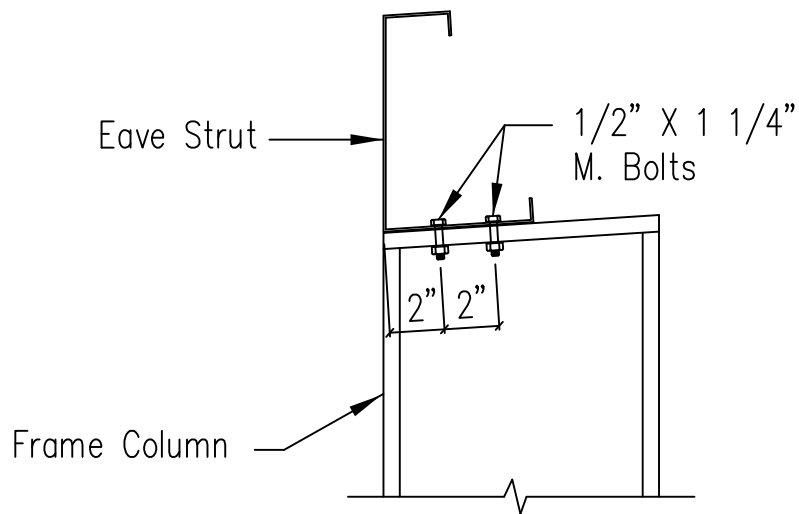
DRAWING NO.

SD52



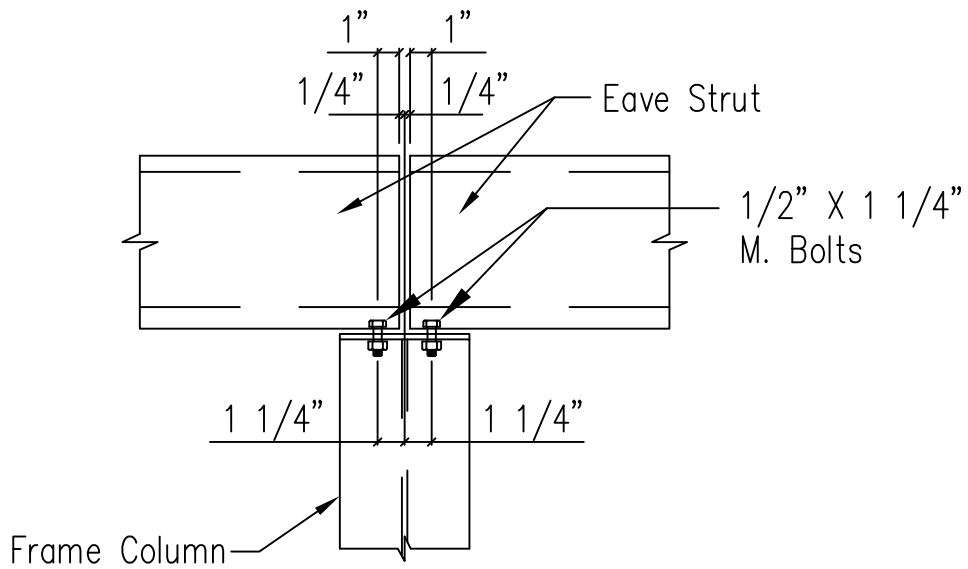
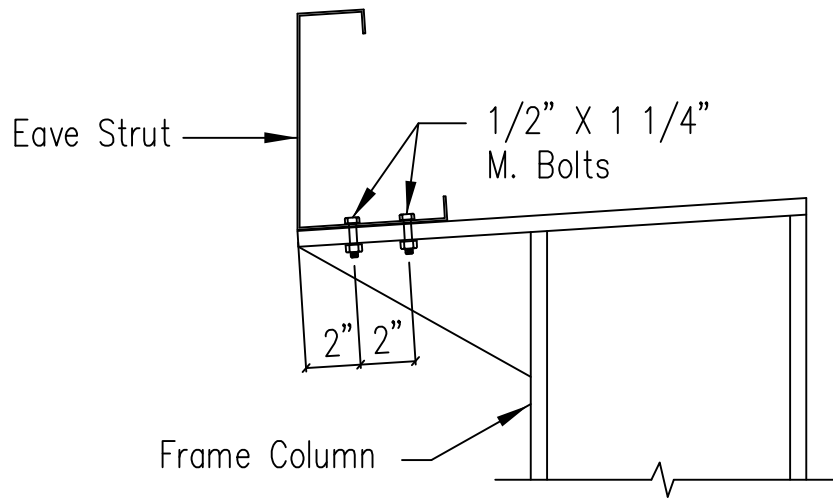
Eave Strut at Interior Column
 Flush Sidewall

DRAWING NO.
 SD57



Eave Strut at Interior Column
Flush Sidewall

DRAWING NO.
SD58

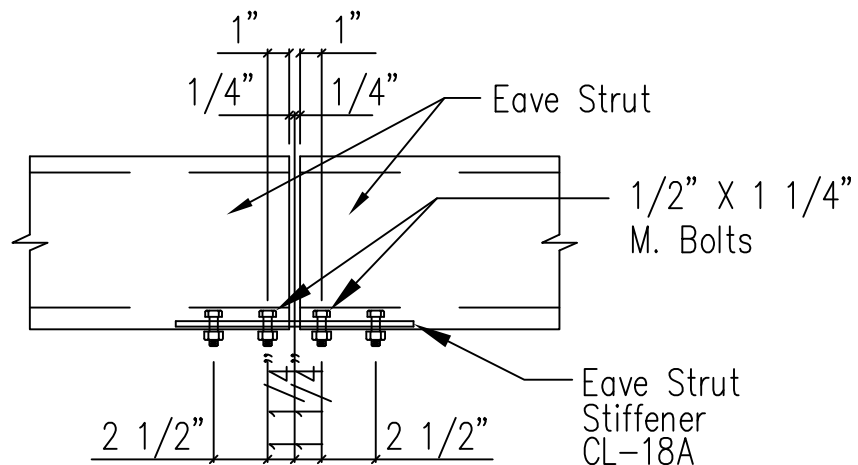
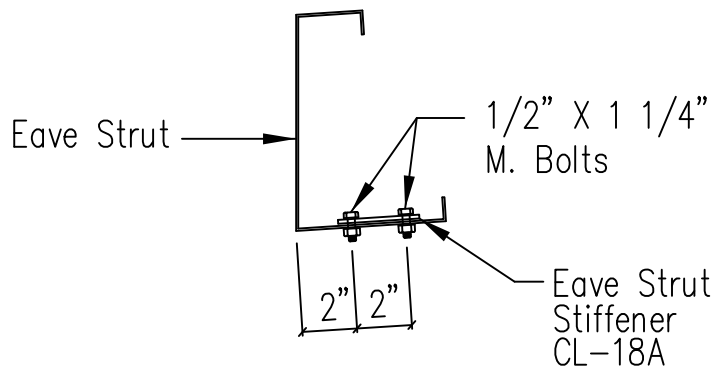
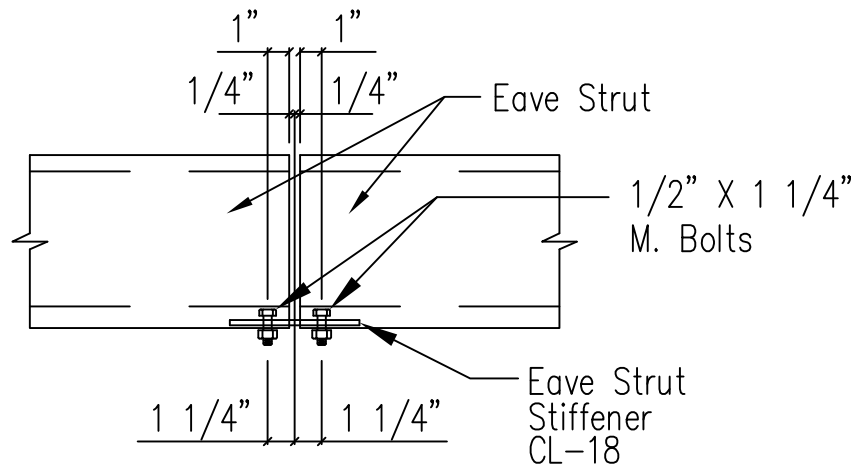
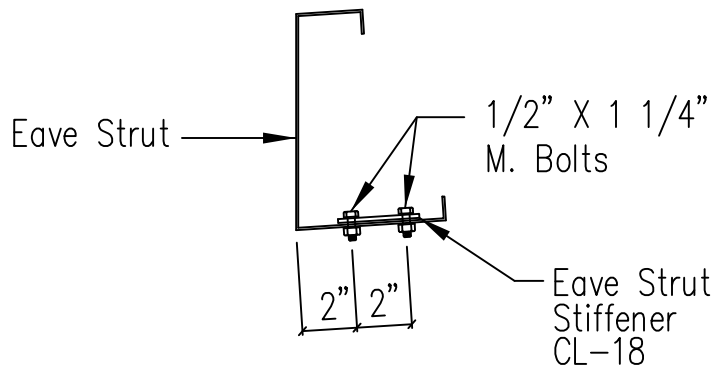


Eave Strut at Interior Column

By-Pass Sidewall

DRAWING NO.

SD59

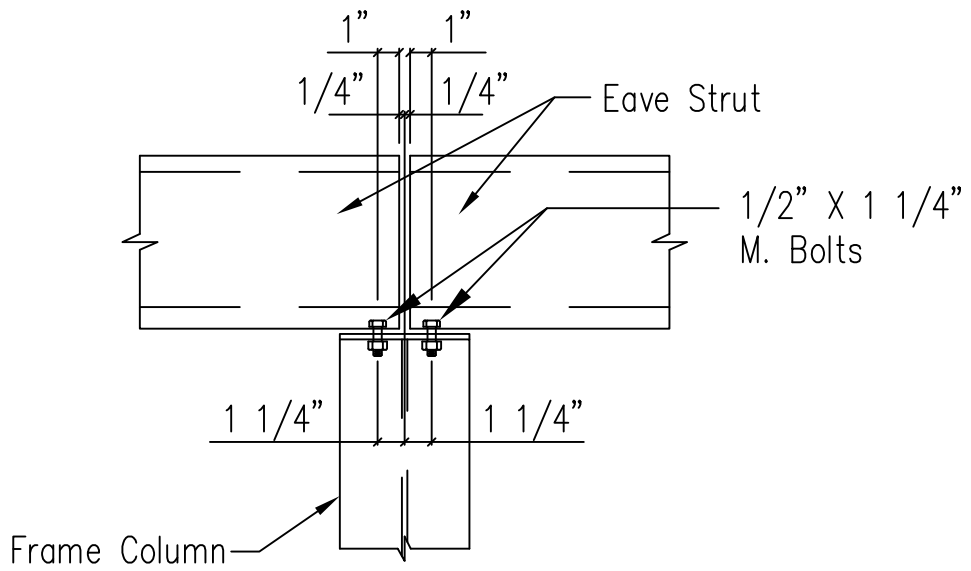
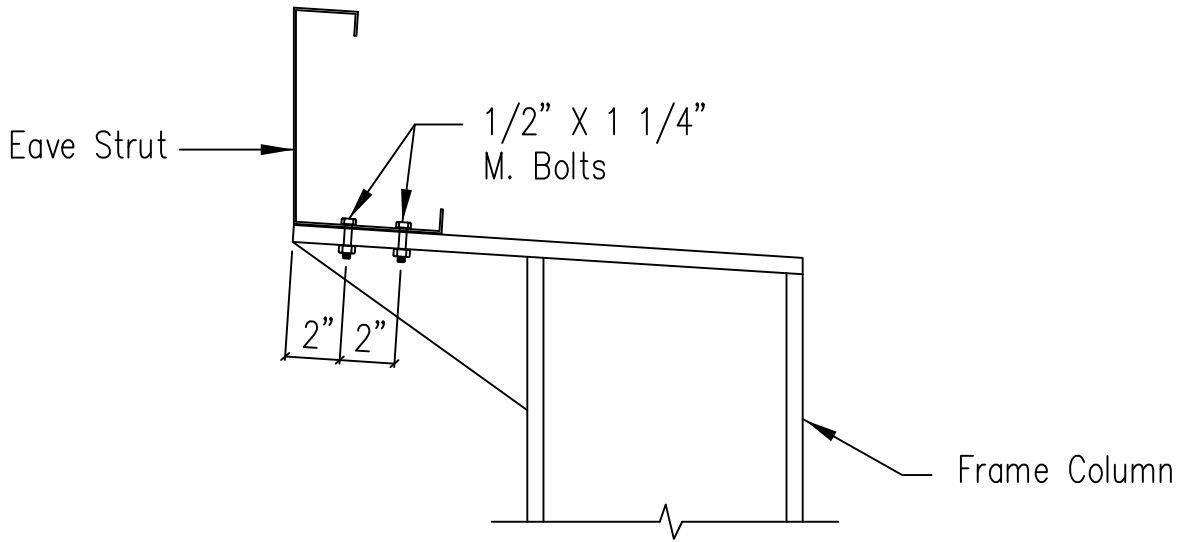


Eave Strut Stiffener Plate

Low Eave

DRAWING NO.

SD60

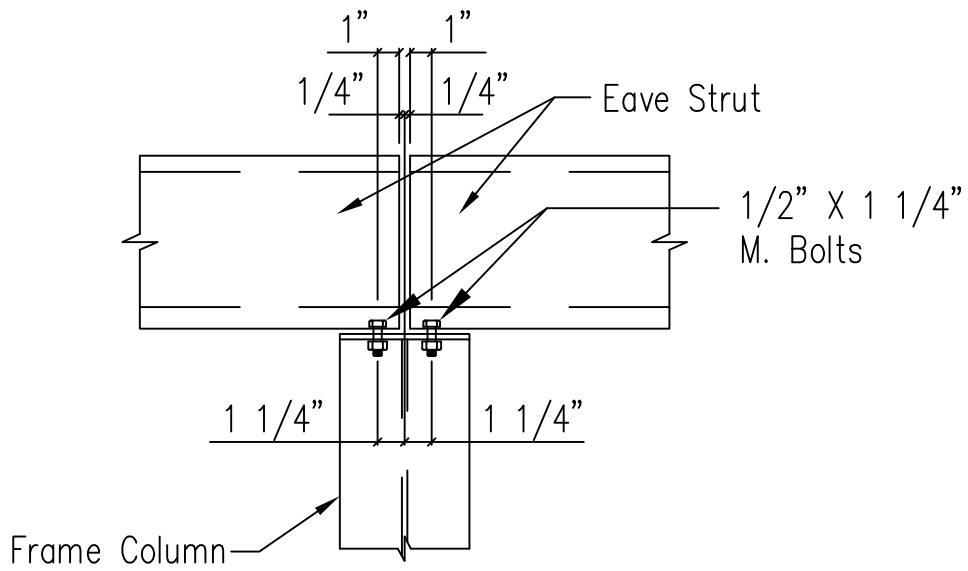
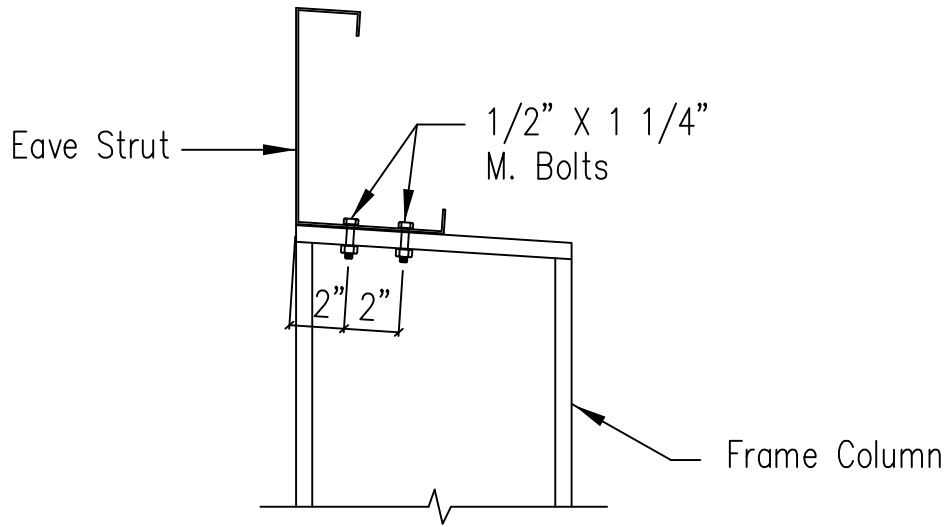


Eave Strut at High Side Column

By-Pass Sidewall

DRAWING NO.

SD61



Eave Strut at High Side Column
 Flush Sidewall

DRAWING NO.
 SD62