

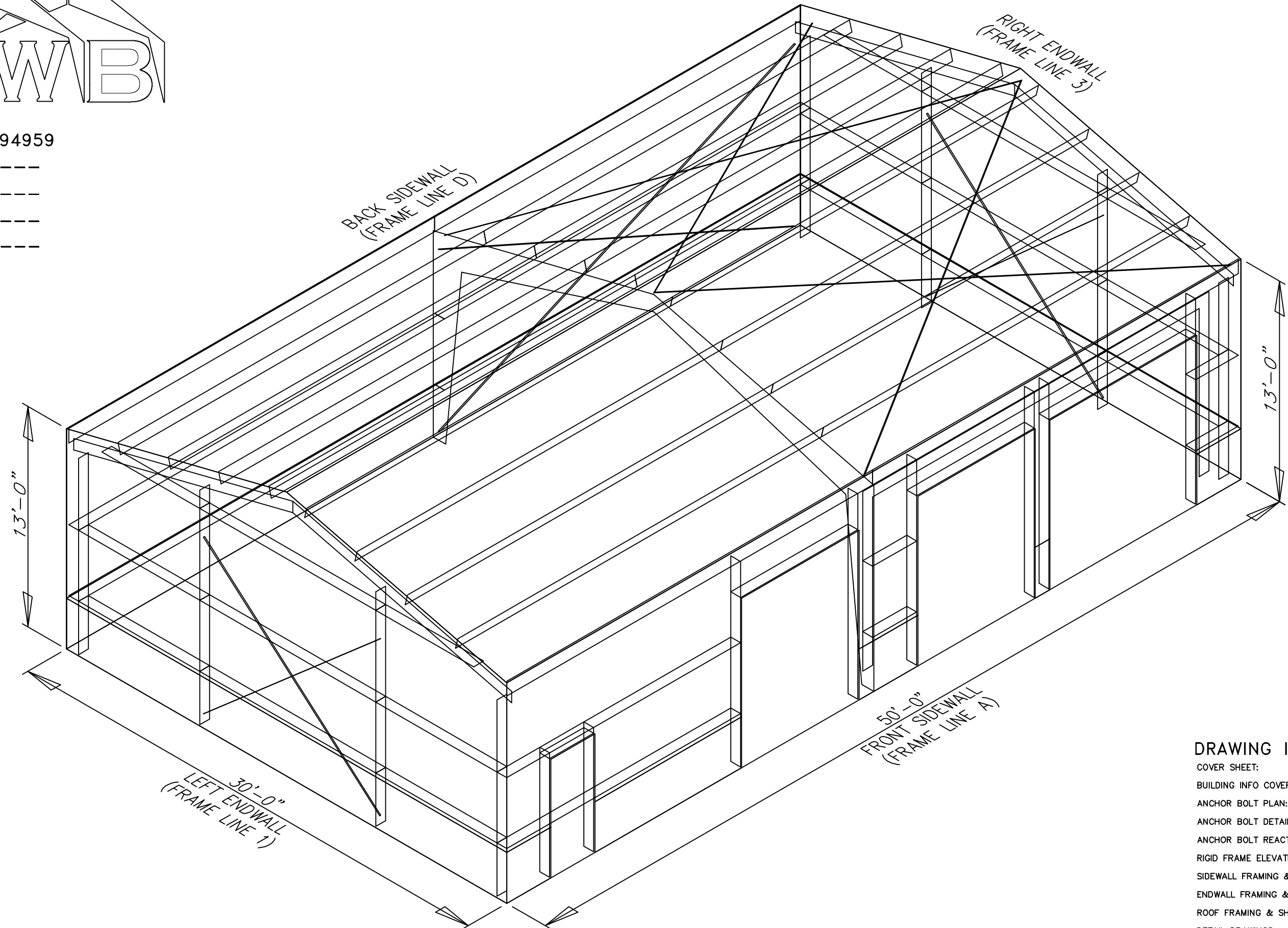
JOB NUMBER: 94959

PROJECT NAME: ---

PROJECT LOCATION: ---

PROJECT LOCATION: ---

PROJECT COUNTY: ---



DRAWING INDEX

COVER SHEET:	1
BUILDING INFO COVERSHEET:	2
ANCHOR BOLT PLAN:	3
ANCHOR BOLT DETAILS:	4
ANCHOR BOLT REACTIONS:	5
RIGID FRAME ELEVATION(S):	6
SIDEWALL FRAMING & SHEETING:	7, 8
ENDWALL FRAMING & SHEETING:	9, 10
ROOF FRAMING & SHEETING PLAN:	11
DETAIL DRAWINGS:	12, 13, 14, 15, 16, 17, 18

GENERAL NOTES

- 1.1 FABRICATION SHALL BE IN ACCORDANCE WITH METAL BUILDING SUPPLIER, STANDARD PRACTICES IN COMPLIANCE WITH THE APPLICABLE SECTIONS, RELATING TO DESIGN REQUIREMENTS AND ALLOWABLE STRESSES OF THE LATEST EDITION OF THE "AWS STRUCTURAL WELDING CODE D1.1 AND D1.3".
- 1.2 **MATERIALS**
- | ASTM DESIGNATION | MIN. YIELD STRENGTH |
|------------------|---------------------|
| A572 | Fy = 50 KSI |
| A36 | Fy = 36 KSI |
| A500 | Fy = 42 KSI |
| A500 | Fy = 42 KSI |
| A572/A1011 | Fy = 50 KSI |
| A529/A572 | Fy = 55 KSI |
| A653/A1011 | Fy = 55 KSI |
| A792/A653 | Fy = 50, 80 KSI |
| A475 - TYPE 1 | EXTRA HIGH STRENGTH |
| A36 | Fy = 36 KSI |
-
- | MIN. TENSILE STRENGTH |
|-----------------------|
| Fu = 60 KSI |
| Fu = 120 KSI |
| Fu = 105 KSI |
| Fu = 60 KSI |
- 1.3 **PRIMER**
SHOP PRIMER PAINT IS A RUST INHIBITIVE PRIMER WHICH MEETS THE END PERFORMANCE OF FEDERAL SPECIFICATION SSPC NO. 15 AND IS GRAY OXIDE IN COLOR. THIS PAINT IS NOT INTENDED FOR LONG TERM EXPOSURE TO THE ELEMENTS. METAL BUILDING SUPPLIER IS NOT RESPONSIBLE FOR ANY DETERIORATION OF THE SHOP PRIMER PAINT AS A RESULT OF IMPROPER HANDLING AND/OR JOBSITE STORAGE. METAL BUILDING SUPPLIER SHALL NOT BE RESPONSIBLE FOR ANY FIELD APPLIED PAINT AND/OR COATINGS. (AISC CODE OF STANDARD PRACTICE, LATEST EDITION). NOMINAL THICKNESS OF PRIMER WILL BE 1 MIL UNLESS OTHERWISE SPECIFIED IN CONTRACT DOCUMENTS.
- 1.4 **GALVANIZED OR SPECIAL COATINGS:**
SEE CONTRACT DOCUMENTS
- 1.5 **ALL BOLTS ARE 1/2"Ø x 0'-1 1/4" A307 EXCEPT:**
A) ENDWALL RAFTER SPlice - 5/8"Ø x 0'-1 3/4" A325-N
B) ENDWALL COLUMN TO RAFTER CONNECTION - (SEE WALL ELEVATION)
C) MAIN FRAME CONNECTIONS - SEE CROSS SECTION
D) FLANGE BRACE CONNECTIONS - 1/2"Ø x 0'-1 1/4" A325
NOTE: WASHERS ARE NOT SUPPLIED UNLESS NOTED OTHERWISE ON DRAWING
- 1.6 **A325 BOLT TIGHTENING REQUIREMENTS**
ALL HIGH STRENGTH BOLTS ARE A325-N UNLESS SPECIFICALLY NOTED OTHERWISE. HOLES ARE NOT SLOTTED AND DESIGN IS BEARING CONNECTION. STRUCTURAL BOLTS SHALL BE TIGHTENED BY THE "TURN-OF-THE-NUT" METHOD IN ACCORDANCE WITH THE LATEST EDITION AISC "SPECIFICATION FOR STRUCTURAL JOINTS" USING ASTM A325 OR A490 BOLTS, WHEN SPECIFICALLY REQUIRED. A325-N BOLTS ARE SUPPLIED WITHOUT WASHER UNLESS OTHERWISE NOTED ON THE DRAWINGS.
ALL BOLTED CONNECTIONS UNLESS NOTED ARE DESIGNED AS BEARING TYPE CONNECTIONS WITH BOLT THREADS NOT EXCLUDED FROM THE SHEAR PLANE.
BUILDINGS IN SEISMIC DESIGN CATEGORY C OR LOWER AND/OR WITH CRANE SYSTEMS 10 TONS OR LESS DO NOT REQUIRE TURN OF THE NUT PRE TENSIONING
- 1.7 **CLOSURE STRIPS ARE FURNISHED (IF ORDERED) FOR APPLICATION:**
INSIDE - UNDER ROOF PANELS & BASE OF WALL PANELS
OUTSIDE - BETWEEN ROOF PANELS & RIDGE CAP
- BETWEEN WALL PANELS & EAVE/GABLE TRIM
- 1.8 **ERECTION NOTE:**
ALL BRACING, STRAPPING, & BRIDGING SHOWN AND PROVIDED BY M.B.S. FOR THIS BUILDING IS REQUIRED AND SHALL BE INSTALLED BY THE ERECTOR AS A PERMANENT PART OF THE STRUCTURE. IF ADDITIONAL BRACING IS REQUIRED FOR STABILITY DURING ERECTION, IT SHALL BE THE ERECTOR'S RESPONSIBILITY TO DETERMINE THE AMOUNT OF SUCH BRACING AND TO PROCURE AND INSTALL AS NEEDED.
- 1.9 **ERECTION AND UNLOADING NOT BY G.W.B.**
- 1.10 **SHORTAGES**
ANY CLAIMS OR SHORTAGES BY BUYER MUST BE MADE TO M.B.S. WITHIN FIVE (5) WORKING DAYS AFTER DELIVERY, OR SUCH CLAIMS WILL BE CONSIDERED TO HAVE BEEN WAIVED BY THE CUSTOMER AND DISALLOWED.
- 1.11 **CORRECTIONS OF ERRORS AND REPAIRS (MBMA 8.10)**
CLAIMS FOR CORRECTION OF ALLEGED MISFITS WILL BE DISALLOWED UNLESS M.B.S. SHALL HAVE RECEIVED PRIOR NOTICE THEREOF AND ALLOWED REASONABLE INSPECTION OF SUCH MISFITS. THE CORRECTION OF MINOR MISFITS BY THE USE OF DRIFT PINS TO DRAW THE COMPONENTS INTO LINE, MODERATE AMOUNTS OF REAMING, CHIPPING AND CUTTING, AND THE REPLACEMENT OF MINOR SHORTAGES OF MATERIAL ARE A NORMAL PART OF ERECTION AND ARE NOT SUBJECT TO CLAIM. NO PART OF THE BUILDING MAY BE RETURNED FOR ALLEGED MISFITS WITHOUT THE PRIOR APPROVAL OF M.B.S.

BUYER/END USE CUSTOMER RESPONSIBILITIES

- 2.1 IT IS THE RESPONSIBILITY OF THE BUYER/END USE CUSTOMER TO OBTAIN APPROPRIATE APPROVALS AND SECURE NECESSARY PERMITS FROM CITY, COUNTY, STATE, OR FEDERAL AGENCIES AS REQUIRED, AND TO ADVISE/RELEASE M.B.S. TO FABRICATE UPON RECEIVING SUCH.
- 2.2 METAL BUILDING SUPPLIER (HEREAFTER REFERRED TO AS M.B.S.) STANDARD SPECIFICATIONS APPLY UNLESS STIPULATED OTHERWISE IN THE CONTRACT DOCUMENTS. M.B.S. DESIGN, FABRICATION, QUALITY CRITERIA, STANDARDS, PRACTICE, METHODS AND TOLERANCES SHALL GOVERN THE WORK WITH ANY OTHER INTERPRETATIONS TO THE CONTRARY NOTWITHSTANDING. IT IS UNDERSTOOD BY BOTH PARTIES THAT THE BUYER/END USE CUSTOMER IS RESPONSIBLE FOR CLARIFICATION OF INCLUSIONS OR EXCLUSIONS FROM THE ARCHITECTURAL PLANS AND/OR SPECIFICATIONS.
- 2.3 IN CASE OF DISCREPANCIES BETWEEN M.B.S. STRUCTURAL STEEL PLANS AND PLANS FOR OTHER TRADES, M.B.S. PLANS SHALL GOVERN. (SECTION 3 AISC CODE OF STANDARD PRACTICES, LATEST EDITION)
- 2.4 APPROVAL OF M.B.S. DRAWINGS AND CALCULATIONS INDICATE THE M.B.S. HAS CORRECTLY INTERPRETED AND APPLIED THE CONTRACT DOCUMENTS. THIS APPROVAL CONSTITUTES THE CONTRACTOR/OWNERS ACCEPTANCE OF THE M.B.S. DESIGN CONCEPTS, ASSUMPTIONS, AND LOADING. (SECTION 4 AISC CODE AND MBMA 3.3.3)
- 2.5 ONCE THE BUYER/END USE CUSTOMER HAS SIGNED M.B.S. APPROVAL PACKAGE AND THE PROJECT IS RELEASED FOR FABRICATION, CHANGES SHALL BE BILLED TO THE BUYER/END USE CUSTOMER INCLUDING MATERIAL, ENGINEERING AND OTHER COSTS. AN ADDITIONAL FEE MAY BE CHARGED IF THE PROJECT MUST BE MOVED FROM THE FABRICATION AND SHIPPING SCHEDULE.

- 2.6 THE BUYER/END USE CUSTOMER IS RESPONSIBLE FOR OVERALL PROJECT COORDINATION. ALL INTERFACE, COMPATIBILITY, AND DESIGN CONSIDERATIONS CONCERNING ANY MATERIALS NOT FURNISHED BY M.B.S. AND M.B.S. STEEL SYSTEM ARE TO BE CONSIDERED AND COORDINATED BY THE BUYER/END USE CUSTOMER. SPECIFIC DESIGN CRITERIA CONCERNING THIS INTERFACE BETWEEN MATERIALS MUST BE FURNISHED BEFORE RELEASE FOR FABRICATION OR M.B.S. ASSUMPTIONS WILL GOVERN (AISC CODE OF STANDARD PRACTICE, LATEST EDITION)
- 2.7 IT IS THE RESPONSIBILITY OF THE BUYER/END USE CUSTOMER TO INSURE THAT M.B.S. PLANS COMPLY WITH THE APPLICABLE REQUIREMENTS OF ANY GOVERNING BUILDING AUTHORITIES. THE SUPPLYING OF SEALED ENGINEERING DATA AND DRAWINGS FOR THE METAL BUILDING SYSTEM DOES NOT IMPLY OR CONSTITUTE AN AGREEMENT THAT M.B.S. OR ITS DESIGN ENGINEERS ARE ACTING AS THE ENGINEER OF RECORD OR DESIGN PROFESSIONAL FOR A CONSTRUCTION PROJECT. THESE DRAWINGS ARE SEALED ONLY TO CERTIFY THE DESIGN OF THE STRUCTURAL COMPONENTS FURNISHED BY M.B.S.
- 2.8 THE BUYER/END USE CUSTOMER IS RESPONSIBLE FOR SETTING OF ANCHOR BOLTS AND ERECTION OF STEEL IN ACCORDANCE WITH M.B.S. "FOR ERECTION" DRAWINGS ONLY. TEMPORARY SUPPORTS SUCH AS GUYS, BRACES, FALSE WORK, CRIBBING OR OTHER ELEMENTS REQUIRED FOR THE ERECTION OPERATION SHALL BE DETERMINED, FURNISHED AND INSTALLED BY THE ERECTOR. NO ITEMS SHOULD BE PURCHASED FROM A PRELIMINARY SET OF DRAWINGS, INCLUDING ANCHOR BOLTS. USE ONLY FINAL "FOR ERECTION" DRAWINGS FOR THIS USE. (AISC CODE OF STANDARD PRACTICE, LATEST EDITION.)
- 2.9 METAL BUILDING SUPPLIER IS RESPONSIBLE FOR THE DESIGN OF THE ANCHOR BOLTS TO PERMIT THE TRANSFER OF FORCES BETWEEN THE BASE PLATE AND THE ANCHOR BOLT IN SHEAR, BEARING AND TENSION, BUT IT IS NOT RESPONSIBLE FOR THE TRANSFER OF ANCHOR BOLT FORCES TO THE CONCRETE OR THE ADEQUACY OF THE ANCHOR BOLT IN RELATION TO THE CONCRETE. UNLESS OTHERWISE NOTED PROVIDED IN THE ORDER DOCUMENTS, M.B.S. DOES NOT DESIGN AND IS NOT RESPONSIBLE FOR THE DESIGN, MATERIAL AND CONSTRUCTION OF THE FOUNDATION OR FOUNDATION EMBEDMENTS. THE END USE CUSTOMER SHOULD BE ASSURE HIMSELF THAT ADEQUATE PROVISIONS ARE MADE IN THE FOUNDATION DESIGN FOR LOADS IMPOSED BY COLUMN REACTIONS OF THE BUILDING, OTHER IMPOSED LOADS, AND BEARING CAPACITY OF THE SOIL AND OTHER CONDITIONS OF THE BUILDING SITE. IT IS RECOMMENDED THAT THE ANCHORAGE AND FOUNDATION OF THE BUILDING BE DESIGNED BY A REGISTERED PROFESSIONAL ENGINEER EXPERIENCED IN THE DESIGN OF SUCH STRUCTURES. (LATEST MBMA LOW RISE BUILDING SYSTEMS MANUAL)
- 2.10 NORMAL ERECTION OPERATIONS INCLUDE THE CORRECTIONS OF MINOR MISFITS BY MODERATE AMOUNTS OF REAMING, CHIPPING, WELDING OR CUTTING, AND THE DRAWING OF ELEMENTS INTO LINE THROUGH THE USE OF DRIFT PINS. ERRORS WHICH CANNOT BE CORRECTED BY THE FOREGOING MEANS OR WHICH REQUIRE MAJOR CHANGES IN MEMBER CONFIGURATION ARE TO BE REPORTED IMMEDIATELY TO M.B.S. BY THE BUYER/END USE CUSTOMER, TO ENABLE WHOEVER IS RESPONSIBLE EITHER TO CORRECT THE ERROR OR TO APPROVE THE MOST EFFICIENT AND ECONOMIC METHOD OF CORRECTION TO BE USED BY OTHERS. (AISC CODE OF STANDARD PRACTICE LATEST EDITION)
- 2.11 NEITHER THE FABRICATOR NOR THE BUYER/END USE CUSTOMER WILL CUT, DRILL OR OTHERWISE ALTER HIS WORK, OR THE WORK OF OTHER TRADES, TO ACCOMMODATE OTHER TRADES, UNLESS SUCH WORK IS CLEARLY SPECIFIED IN THE CONTRACT DOCUMENTS. WHENEVER SUCH WORK IS SPECIFIED, THE BUYER/END USE CUSTOMER IS RESPONSIBLE FOR FURNISHING COMPLETE INFORMATION AS TO MATERIALS, SIZE, LOCATION AND NUMBER OF ALTERATIONS PRIOR TO PREPARATION OF SHOP DRAWINGS. (AISC CODE OF STANDARD PRACTICE LATEST EDITION)
- 2.12 **WARNING:** IN NO CASE SHOULD GALVALUME STEEL PANELS BE USED IN CONJUNCTION WITH LEAD OR COPPER. BOTH LEAD AND COPPER HAVE HARMFUL CORROSIVE EFFECTS ON THE GALVALUME ALLOY COATING WHEN THEY ARE IN CONTACT WITH GALVALUME STEEL PANELS. EVEN RUN-OFF FROM COPPER FLASHING, WIRING, OR TUBING ONTO GALVALUME SHOULD BE AVOIDED.
- 2.13 **SAFETY COMMITMENT:** METAL BUILDING SUPPLIER HAS A COMMITMENT TO MANUFACTURE QUALITY BUILDING COMPONENTS THAT CAN BE SAFELY ERECTED. HOWEVER, THE SAFETY COMMITMENT AND JOB SITE PRACTICES OF THE ERECTOR ARE BEYOND THE CONTROL OF M.B.S. IT IS STRONGLY RECOMMENDED THAT SAFE WORKING CONDITIONS AND ACCIDENT PREVENTION PRACTICES BE THE TOP PRIORITY OF ANY JOB SITE. LOCAL, STATE, AND FEDERAL SAFETY AND HEALTH STANDARDS SHOULD ALWAYS BE FOLLOWED TO HELP INSURE WORKERS SAFETY. MAKE CERTAIN ALL EMPLOYEES KNOW THE SAFEST AND MOST PRODUCTIVE WAY OF ERECTING A BUILDING. EMERGENCY PROCEDURES SHOULD BE KNOWN TO ALL EMPLOYEES. DAILY MEETINGS HIGHLIGHTING SAFETY PROCEDURES ARE ALSO RECOMMENDED. THE USE OF HARD HATS, RUBBER SOLE SHOES FOR ROOF WORK, PROPER EQUIPMENT FOR HANDLING MATERIAL, AND SAFETY NETS WHERE APPLICABLE, ARE RECOMMENDED.
- 2.14 ROOF DRAINAGE SYSTEMS (GUTTER, DOWNSPOUTS, ETC.) MUST BE FREE OF ANY OBSTRUCTION TO ENSURE SMOOTH OPERATION AT ANY GIVEN TIME.
- 2.15 IT IS RECOMMENDED BY FACTORY MUTUAL (REFERENCE B2.44) THAT ROOFS BE CLEARED OF SNOW WHEN HALF OF THE MAXIMUM SNOW DEPTH IS REACHED. THE MAXIMUM SNOW DEPTH CAN BE ESTIMATED BASED ON THE DESIGN SNOW LOAD AND THE DENSITY OF SNOW AND/OR ICE BUILDUP. SEE TABLE BELOW.

ROOF SNOW LOAD (IN PSF)	EQUIVALENT SNOW HEIGHT AT ROOF (IN INCHES)	RECOMMENDED SNOW HEIGHT WHEN SNOW REMOVAL SHOULD START (IN INCHES)
20	16.60	8.30
25	17.25	8.62
30	17.90	8.95
35	18.55	9.28
40	19.20	9.60
45	19.85	9.92
50	20.50	10.25
55	21.15	10.58
60	21.80	10.90
65	22.45	11.22
70	23.10	11.55
75	23.75	11.88
80	24.40	12.20

NOTE:
FOR SNOW/ICE REMOVAL PROCEDURE, REFER TO METAL BUILDING SYSTEM MANUAL 2002 EDITION, SECTION AB.4, PAGE XI-AB-2

BUILDING LOADS

THIS STRUCTURE HAS BEEN DESIGNED IN ACCORDANCE WITH THE FOLLOWING AS INDICATED:

- DESIGN LOADS:**
- DESIGN CODE / WIND CODE : IBC-21
 OCCUPANCY / RISK CATEGORY : II - Normal
 ENCLOSURE : Enclosed
 ROOF DEAD LOAD (D) (PSF) : 2.97
 ROOF COLLATERAL LOAD (C) (PSF) : 1.00
- WIND LOAD**
 ULTIMATE WIND SPEED, (VULT) (MPH) : 115.00
 WIND EXPOSURE CATEGORY : C
 INTERNAL PRESSURE COEFFICIENT, (GCpi) : 0.18/-0.18
 WALL PANEL DESIGN WIND PRESSURE (PSF) : 25.89/-28.09
 WIND ENCLOSURE CLASSIFICATION : Enclosed
- LIVE LOAD**
 PRIMARY FRAMING (PSF) : 20.00
 TRIB. AREA REDUCTION : No
 SECONDARY FRAMING (PSF) : 20.00
- SNOW LOAD**
 GROUND SNOW LOAD, (Pg) (PSF) : 70.00
 ROOF SNOW LOAD, (Pf) (PSF) : 70.00
 SNOW EXPOSURE FACTOR, (Ce) : 1.00
 SNOW IMPORTANCE FACTOR, (Is) : 1.00
 THERMAL FACTOR, (Ct) : 1.20
- SEISMIC LOAD**
 SEISMIC IMPORTANCE FACTOR, (Ie) : 1.00
 SITE CLASSIFICATION : d
 SPECTRAL RESPONSE ACCELERATION : Ss = 0.831 :S1 = 0.252
 SPECTRAL RESPONSE COEFFICIENTS : Sds = 0.665 :Sd1 = 0.352
 SEISMIC DESIGN CATEGORY : D
 BASIC SEISMIC FORCE RESISTING SYSTEM : STEEL SYSTEM NOT SPECIFICALLY DETAILED FOR RESISTANCE
 : RIGID FRAMES (OMF)
 : BRACED FRAMES (OCBF/OMF)
 TOTAL DESIGN BASE SHEAR, (V) (KIPS) : LONGITUDINAL = 6.58
 : TRANSVERSE = 7.42
- RESPONSE MODIFICATION FACTORS, (R) : RIGID FRAMES = 3.25 $\Omega = 3.00$
 : SW X-BRACING = 3.25 $\Omega = 2.00$
- SEISMIC RESPONSE COEFFICIENTS, (Cs) : RIGID FRAMES = 0.2047
 : SW X-BRACING = 0.2047
- ANALYSIS PROCEDURE USED : EQUIVALENT LATERAL FORCE PROCEDURE
 OTHER LOADS/REQUIREMENTS

BUILDING DESCRIPTION:

- WIDTH (FT) : 30.0
 LENGTH (FT) : 50.0
 EAVE HEIGHT AT BSW (FT) : 13.0
 EAVE HEIGHT AT FSW (FT) : 13.0
 ROOF SLOPE AT BSW : 3.0:12
 ROOF SLOPE AT FSW : 3.0:12
 BAY SPACING (FT) : 2 AT 25

COVERING AND TRIMS:

- ROOF PANELS & TRIMS**
 PANEL TYPE : 26 GA. PBR
 PANEL COLOR : POLAR WHITE
 TRIM COLORS
 GABLE/EAVE : COAL BLACK
 EAVE GUTTER : COAL BLACK

WALL PANELS & TRIMS

- PANEL TYPE : 26 GA. PBR
 PANEL COLOR : POLAR WHITE
 TRIM COLORS
 CORNER : COAL BLACK
 FRAMED OPENING : COAL BLACK
 DOWNSPOUTS : COAL BLACK
 BASE : COAL BLACK

WAINSCOT PANELS & TRIMS

- PANEL TYPE : 26 GA. PBR
 PANEL COLOR : COAL BLACK
 TRIM COLORS : COAL BLACK

INSULATION

- ROOF INSULATION : N/A
 WALL INSULATION : N/A

ENG.	CHK.	DWN.	MEZ	MEZ	CAF	PKD	PKD	PKD	PKD	PKD	PKD	PKD	PKD	PKD	PKD	PKD	PKD	PKD	PKD



1101 3RD AVE
 GRAND JUNCTION, CO 81501
 PHONE: (800)-497-2135
 WWW.GREATWESTERNBUILDINGS.COM

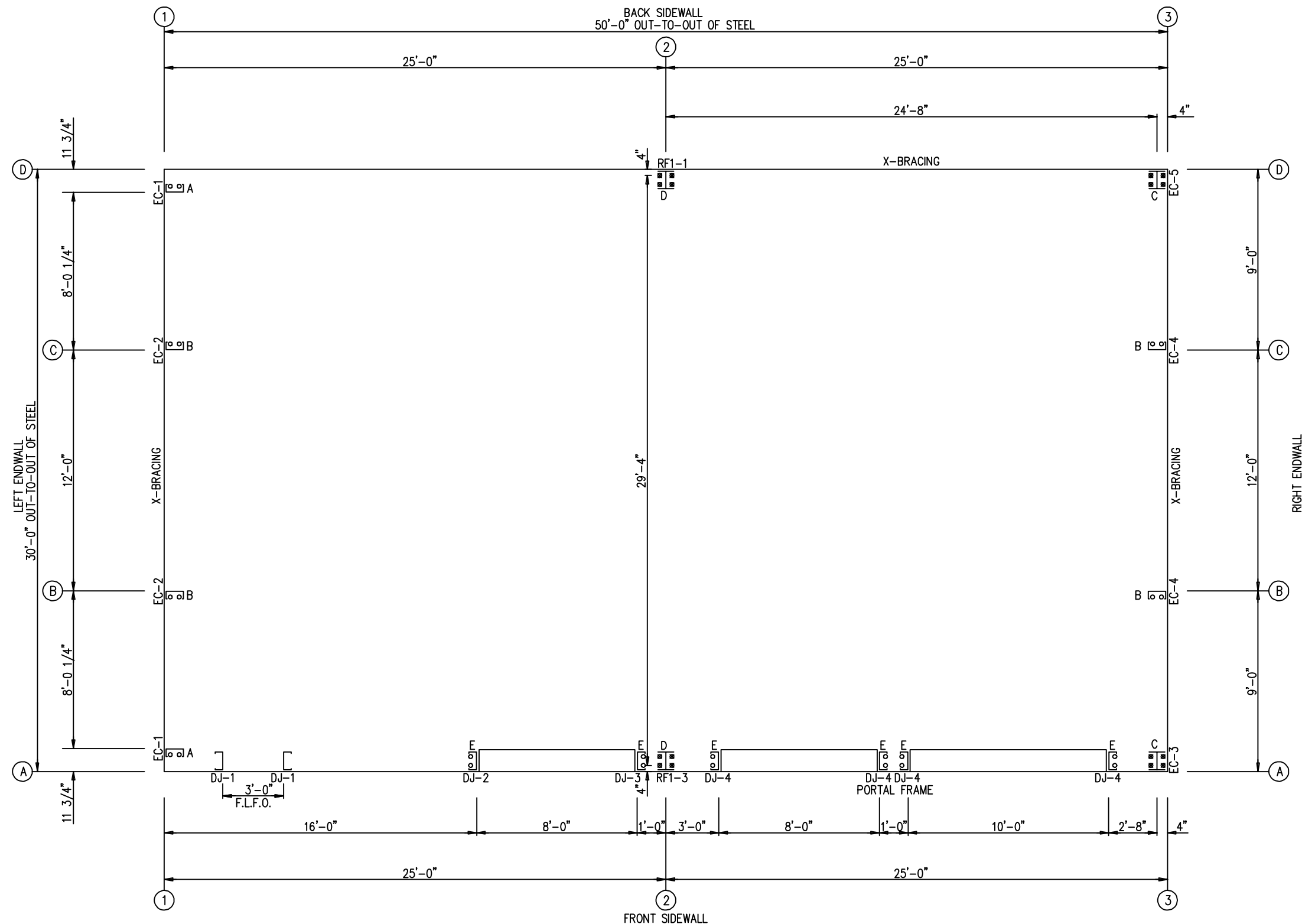
CUSTOMER NAME:	
PROJECT NAME:	
PROJECT LOCATION:	
PROJECT COUNTY:	
PROJECT END USE:	
CUSTOMER PHONE NUMBER:	
CUSTOMER EMAIL:	
SCALE:	N.T.S.
SHEET NUMBER:	2 OF 18
JOB NUMBER:	94959
SHEET TITLE:	BUILDING INFO COVERSHEET

THIS SEAL PERTAINS ONLY TO THE MATERIALS DESIGNED AND SUPPLIED BY GREAT WESTERN BUILDINGS. THE DRAWINGS AND THE METAL BUILDING WHICH THEY REPRESENT ARE THE PRODUCT OF GREAT WESTERN BUILDINGS. THE REGISTERED PROFESSIONAL ENGINEER WHOSE SEAL AND SIGNATURE APPEARS ON THESE DRAWINGS IS EMPLOYED BY GREAT WESTERN BUILDINGS AND DOES NOT SERVE AS OR REPRESENT THE OVERALL PROJECT ENGINEER OF RECORD AND SHALL NOT BE CONSTRUED AS SUCH.

ANCHOR BOLT SUMMARY

QTY	LOCATE	DIA (in)	TYPE
○ 12	JAMB	5/8"	A307
○ 12	ENDWALL	5/8"	A307
⊗ 8	ENDWALL	3/4"	A307
⊗ 8	FRAME	3/4"	A307

ISSUE	DATE	DWN.	CHK.	ENG.
APPROVAL	06/24/24	MEZ	MEZ	RTS
PERMIT	07/01/24	AA	CAF	RTS
ERECTION	07/15/24	PKD	PKD	RTS

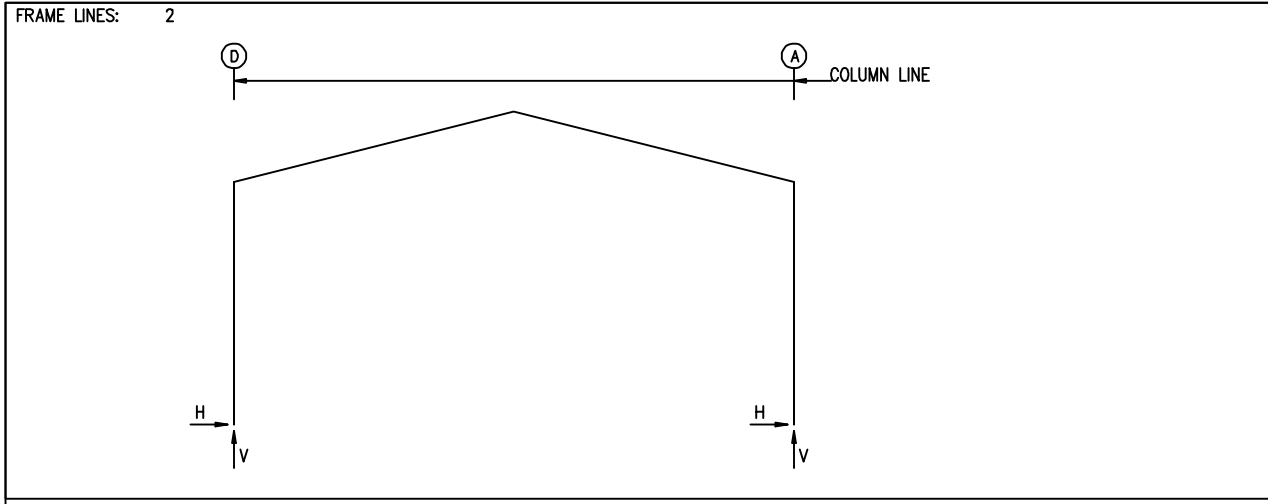


ANCHOR BOLT PLAN
 NOTE: ALL BASE PLATES @ 100'-0" (U.N.)
 F.L.F.O = Field Located Frame Opening

1101 3RD AVE
 GRAND JUNCTION, CO 81501
 PHONE: (800)-497-2135
 WWW.GREATWESTERNBUILDINGS.COM

CUSTOMER NAME:	
PROJECT NAME:	
PROJECT LOCATION:	
PROJECT COUNTY:	
PROJECT END USE:	
CUSTOMER PHONE NUMBER:	
CUSTOMER EMAIL:	
SCALE:	N.T.S.
SHEET NUMBER:	3 OF 18
JOB NUMBER:	94959
SHEET TITLE:	ANCHOR BOLT PLAN

THIS SEAL PERTAINS ONLY TO THE MATERIALS DESIGNED AND SUPPLIED BY GREAT WESTERN BUILDINGS. THE DRAWINGS AND THE METAL BUILDING WHICH THEY REPRESENT ARE THE PRODUCT OF GREAT WESTERN BUILDINGS. THE REGISTERED PROFESSIONAL ENGINEER WHOSE SEAL AND SIGNATURE APPEARS ON THESE DRAWINGS IS EMPLOYED BY GREAT WESTERN BUILDINGS AND DOES NOT SERVE AS OR REPRESENT THE OVERALL PROJECT ENGINEER OF RECORD AND SHALL NOT BE CONSTRUED AS SUCH.



RIGID FRAME: BASIC COLUMN REACTIONS (k)

FRAME Line	Column Line	Dead	Collateral	Live	Snow	Wind_Left1	Wind_Right1
2	D	0.7	1.9	0.2	0.5	3.8	9.4
2	A	-0.7	1.9	-0.2	0.5	-3.8	9.4

FRAME Line	Column Line	Wind_Left2	Wind_Right2	Wind_Long1	Wind_Long2	Seismic_Left	Seismic_Right
2	D	-6.4	-6.1	1.1	-1.8	0.5	-8.6
2	A	-1.1	-1.8	6.4	-6.1	0.3	-7.7

FRAME Line	Column Line	Seismic_Long	MIN_SNOW	F1UNB_SL_L	F1UNB_SL_R
2	D	0.0	-1.9	3.8	9.4
2	A	0.0	-2.0	-3.8	9.4

RIGID FRAME: MAXIMUM REACTIONS, ANCHOR BOLTS, & BASE PLATES

Frm Line	Col Line	Load Id	Hmax	Vmax	Hmin	Vmin	Bolt(QTY)	DIA	Base_Plate(Width)	Base_Plate(Length)	Thick	Grout(in)
2	D	2	14.1	35.2	-3.4	-2.5	4	0.750	6.000	10.75	0.375	0.0
2	A	6	3.4	-2.5	-14.1	35.2	4	0.750	6.000	10.75	0.375	0.0

NOTES FOR REACTIONS

Building reactions are based on the following building data:

- Width (ft) = 30.0
- Length (ft) = 50.0
- Eave Height (ft) = 13.0/13.0
- Roof Slope (rise/12) = 3.0/12/3.0:12
- Dead Load (psf) = 2.97
- Collateral Load (psf) = 1.00
- Live Load (psf) = 20.00
- Snow Load (psf) = 70.00
- Wind Speed (mph) = 115.00
- Wind Code = IBC-21
- Exposure = C
- Closed/Open = Enclosed
- Importance Wind = 1.00
- Importance Seismic = 1.00
- Seismic Zone = D
- Seismic Coeff (Fa*Sa) = 1.00

ID Description

- 1 Dead+Collateral+Snow
- 2 Dead+Collateral+Snow+Slide_Snow
- 3 0.6Dead+0.6Wind_Left1
- 4 0.6Dead+0.6Wind_Right1
- 5 0.6Dead+0.6Wind_Left2
- 6 0.6Dead+0.6Wind_Right2
- 7 0.51Dead+0.7Seismic_LongL
- 8 0.6Dead+0.6Wind_Suction+0.6Wind_Long1L
- 9 0.6Dead+0.6Wind_Pressure+0.6Wind_Long1L
- 10 Dead+Collateral+E1UNB_SL_L
- 11 0.6Dead+0.6Wind_Left1+0.6Wind_Suction
- 12 0.6Dead+0.6Wind_Right1+0.6Wind_Suction
- 13 0.6Dead+0.6Wind_Pressure+0.6Wind_Long2L
- 14 Dead+Collateral+E1UNB_SL_R
- 15 0.6Dead+0.6Wind_Suction+0.6Wind_Long2L
- 16 Dead+Collateral+E2UNB_SL_L
- 17 Dead+Collateral+E2UNB_SL_R

ANCHOR BOLT SUMMARY

QTY	LOCATE	DIA (in)	TYPE
12	JAMB	5/8"	A307
12	ENDWALL	5/8"	A307
8	ENDWALL	3/4"	A307
8	FRAME	3/4"	A307

BUILDING BRACING REACTIONS

Loc	Wall Line	Col Line	± Reactions(k)	Panel_Shear (lb/ft)	Note
L_EW	1	C,B	1.7 1.9	2.2 2.5	
F_SW	A	2,3	0.9 0.8	2.1 2.0	(b)
R_EW	3	B,C	1.7 2.0	2.2 2.5	
B_SW	D	3,2	1.8 0.8	4.3 1.9	

(b) Wind bent in bay, base above finish floor

Reactions for seismic represent shear force, Eh
Reaction values shown are unfactored

ENDWALL COLUMN: BASIC COLUMN REACTIONS (k)

Frm Line	Col Line	Dead	Collat	Live	Snow	Wind_Left1	Wind_Right1	Wind_Left2	Wind_Right2	Wind Press
1	D	0.2	0.0	0.8	2.9	0.0	-0.8	0.0	-0.3	-0.6
1	C	0.6	0.2	3.0	10.4	-1.7	-5.2	0.0	-1.7	-1.4
1	B	0.6	0.2	3.0	10.4	0.0	-0.1	1.7	0.0	-1.4
1	A	0.2	0.0	0.8	2.9	0.0	-1.0	0.0	-0.8	-0.6

Frm Line	Col Line	Wind Suct	Wind_Long1	Wind_Long2	Seis_Left	Seis_Right	Seis_Long	MIN_SNOW
1	D	0.7	0.0	-1.4	0.0	0.1	0.0	0.0
1	C	1.6	0.0	-2.3	-0.4	-2.2	0.0	3.0
1	B	1.6	0.4	-2.2	0.0	2.5	2.2	3.0
1	A	0.7	0.0	-1.0	0.0	0.0	0.0	0.8

Frm Line	Col Line	E1UNB_SL_L	E1UNB_SL_R
1	D	0.0	3.2
1	C	0.0	12.3
1	B	0.0	4.4
1	A	0.0	0.6

Frm Line	Col Line	Dead	Collat	Live	Snow	Wind_Left1	Wind_Right1	Wind_Left2	Wind_Right2
3	A	0.3	0.0	0.8	2.9	0.0	-0.8	0.0	-0.3
3	B	0.6	0.2	3.0	10.4	-1.7	-5.3	0.0	-1.7
3	C	0.6	0.2	3.0	10.4	0.0	-0.1	1.7	-5.3
3	D	0.3	0.0	0.8	2.9	0.0	-1.0	0.0	-0.8

Frm Line	Col Line	Wind_Press	Wind_Suct	Wind_Long1	Wind_Long2	Seis_Left	Seis_Right	Seis_Long
3	A	-2.4	-0.9	1.7	0.9	0.0	-1.4	0.0
3	B	-1.4	0.0	1.6	0.0	0.0	-2.3	-2.2
3	C	-1.4	0.0	1.6	0.0	0.4	-2.2	0.0
3	D	-3.4	-0.8	1.7	0.8	0.0	-1.0	0.0

Frm Line	Col Line	MIN_SNOW	E2UNB_SL_L	E2UNB_SL_R
3	A	0.0	0.8	0.0
3	B	0.0	3.0	0.0
3	C	0.0	3.0	0.0
3	D	0.0	0.8	0.0

ENDWALL COLUMN: MAXIMUM REACTIONS, ANCHOR BOLTS, & BASE PLATES

Frm Line	Col Line	Load Id	Hmax	Vmax	Hmin	Vmin	Bolt(QTY)	DIA	Base_Plate(Width)	Base_Plate(Length)	Thick	Grout(in)
1	D	8	0.4	-0.7	9	-0.3	2	0.625	3.500	8.000	0.250	0.0
1	C	11	0.9	-2.8	9	-0.8	2	0.625	3.500	8.000	0.250	0.0
1	B	12	0.9	-2.8	13	-0.8	2	0.625	3.500	8.000	0.250	0.0
1	A	15	0.4	-0.7	13	-0.3	2	0.625	3.500	8.000	0.250	0.0
3	A	8	1.0	-0.2	7	-1.5	4	0.750	6.000	8.000	0.375	0.0
3	B	11	1.0	-2.8	9	-0.9	2	0.625	3.500	8.000	0.250	0.0
3	C	12	1.0	-2.8	13	-0.9	2	0.625	3.500	8.000	0.250	0.0
3	D	15	1.0	-0.2	7	-3.0	4	0.750	6.000	8.000	0.375	0.0

DATE	ISSUE	CHK.	ENG.
06/24/24 <td>APPROVAL <td>MEZ <td>RTS </td></td></td>	APPROVAL <td>MEZ <td>RTS </td></td>	MEZ <td>RTS </td>	RTS
07/01/24 <td>PERMIT <td>CAF <td>RTS </td></td></td>	PERMIT <td>CAF <td>RTS </td></td>	CAF <td>RTS </td>	RTS
07/15/24 <td>ERECTION <td>PKD <td>RTS </td></td></td>	ERECTION <td>PKD <td>RTS </td></td>	PKD <td>RTS </td>	RTS

1101 3RD AVE
GRAND JUNCTION, CO 81501
PHONE: (800)-497-2135
WWW.GREATWESTERNBUILDINGS.COM

CUSTOMER NAME: _____
PROJECT NAME: _____
PROJECT LOCATION: _____
PROJECT COUNTY: _____
PROJECT END USE: _____
CUSTOMER PHONE NUMBER: _____
CUSTOMER EMAIL: _____
SCALE: N.T.S.
SHEET NUMBER: 5 OF 18
JOB NUMBER: 94959
SHEET TITLE: ANCHOR BOLT REACTIONS

THIS SEAL PERTAINS ONLY TO THE MATERIALS DESIGNED AND SUPPLIED BY GREAT WESTERN BUILDINGS. THE DRAWINGS AND THE METAL BUILDING WHICH THEY REPRESENT ARE THE PRODUCT OF GREAT WESTERN BUILDINGS. THE REGISTERED PROFESSIONAL ENGINEER WHOSE SEAL AND SIGNATURE APPEARS ON THESE DRAWINGS IS EMPLOYED BY GREAT WESTERN BUILDINGS AND DOES NOT SERVE AS OR REPRESENT THE OVERALL PROJECT ENGINEER OF RECORD AND SHALL NOT BE CONSTRUED AS SUCH.

SPLICE BOLT TABLE						
Mark	Qty		Int	Type	Dia	Length
	Top	Bot				
SP-1	4	4	2	A325	3/4"	2 1/4"
SP-2	4	4	0	A325	5/8"	2"

MEMBER TABLE						
Mark	Web Depth		Web Plate		Outside Flange	Inside Flange
	Start	End	Thick	Length	W x Thk x Length	W x Thk x Length
RF1-1	10.0	22.7	0.135	10'-0 3/8"	6 x 1/4" x 12'-0 13/16"	6 x 3/8" x 10'-4"
	22.7	23.0	0.188	2'-6 1/4"	6 x 1/4" x 1'-11 7/8"	
RF1-2	23.0	15.9	0.164	8'-9 1/2"	5 x 1/4" x 13'-3 11/16"	5 x 3/8" x 9'-1 3/4"
	15.9	12.0	0.135	5'-0"		5 x 1/4" x 4'-5 1/16"
RF1-3	23.0	22.7	0.188	2'-6 1/4"	6 x 1/4" x 1'-11 7/8"	6 x 3/8" x 10'-4"
	22.7	10.0	0.135	10'-0 3/8"	6 x 1/4" x 12'-0 13/16"	

▽ FLANGE BRACES: FBxx (1 or 2)
 xx=length(in)
 (1) One Side; (2) Two Sides
 A - 2X2X14Ga

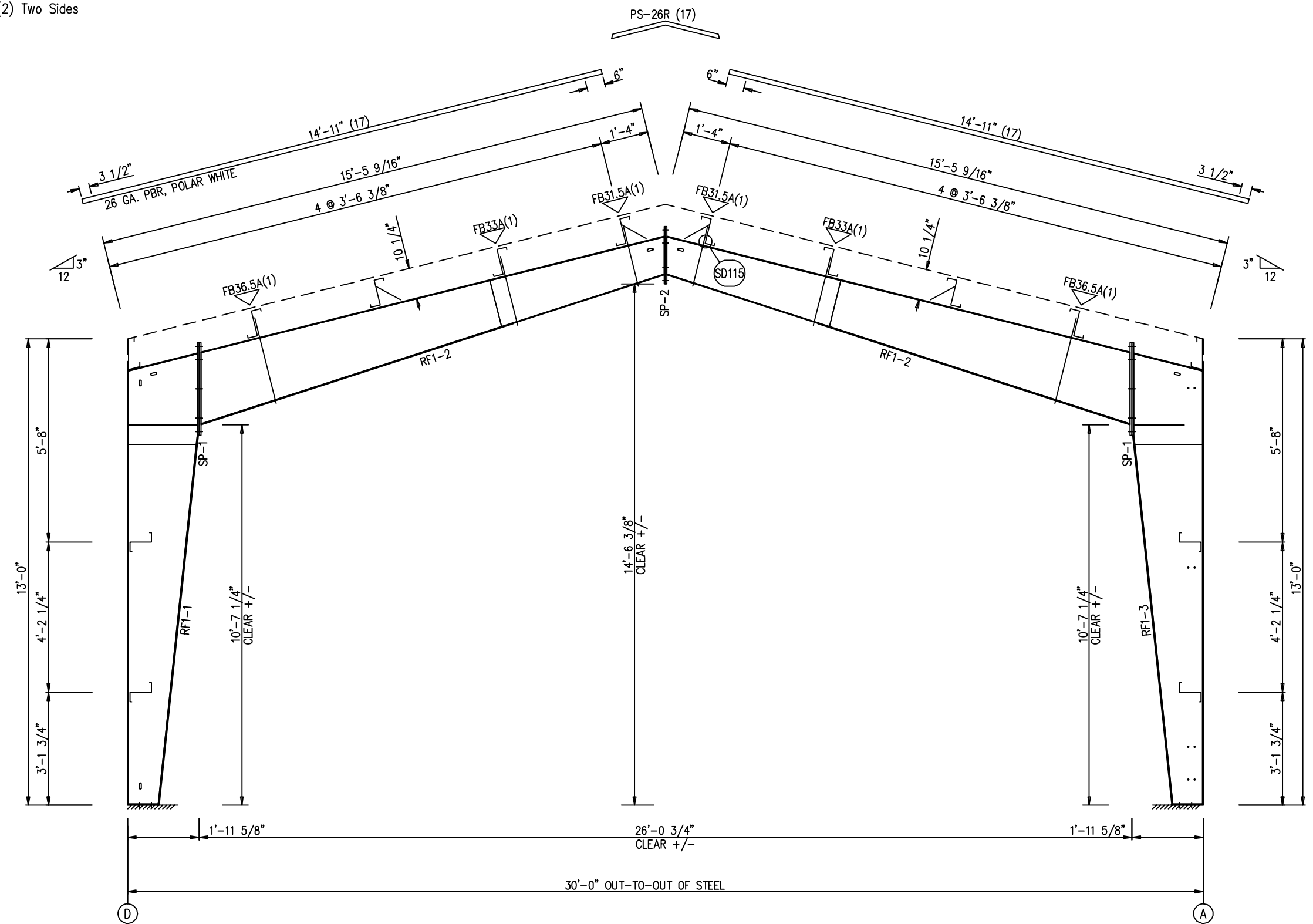
DATE	DWN.	CHK.	ENG.
06/20/24	MEZ	MEZ	RTS
07/09/24	AA	CAF	RTS
07/15/24	PKD	PKD	RTS



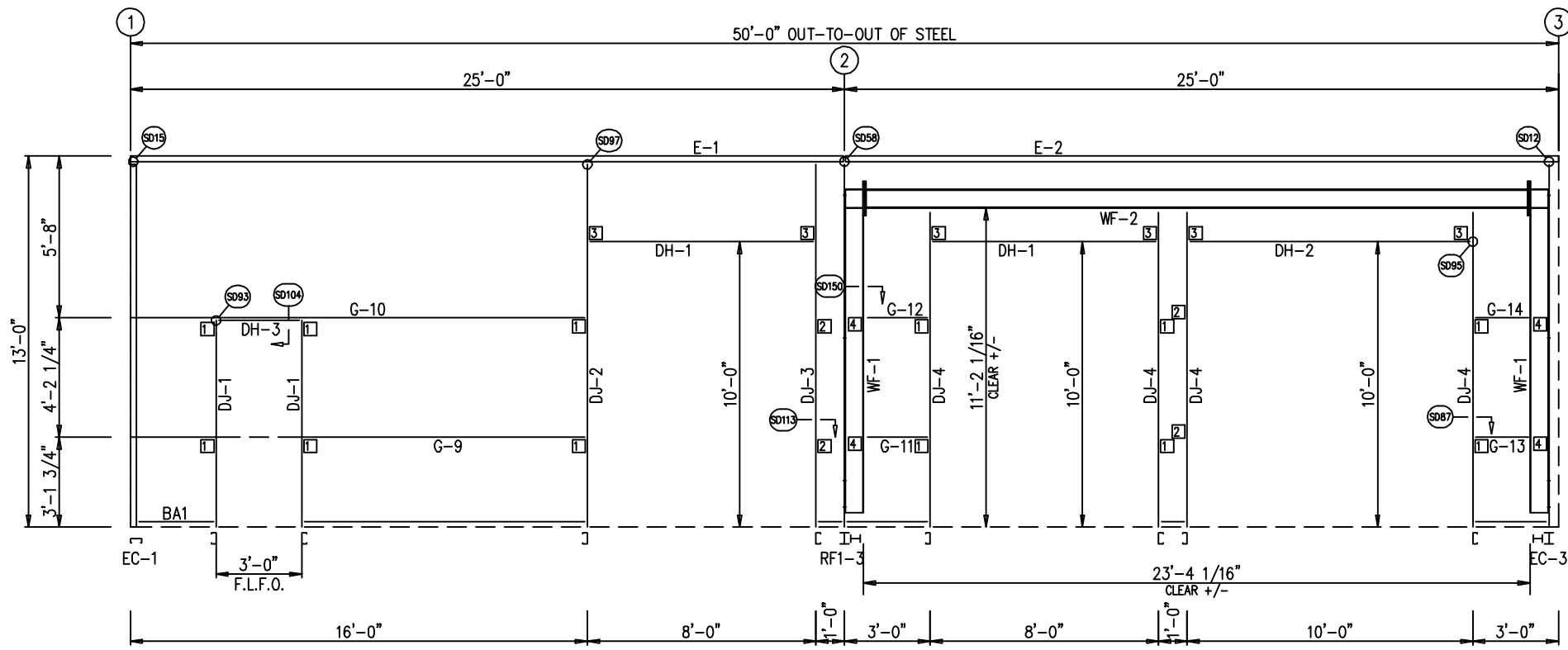
1101 3RD AVE
 GRAND JUNCTION, CO 81501
 PHONE: (800)-497-2135
 WWW.GREATWESTERNBUILDINGS.COM

CUSTOMER NAME:	
PROJECT NAME:	
PROJECT LOCATION:	
PROJECT COUNTY:	
PROJECT END USE:	
CUSTOMER PHONE NUMBER:	
CUSTOMER EMAIL:	
SCALE:	N.T.S.
SHEET NUMBER:	6 OF 18
JOB NUMBER:	94959
SHEET TITLE:	RIGID FRAME ELEVATION

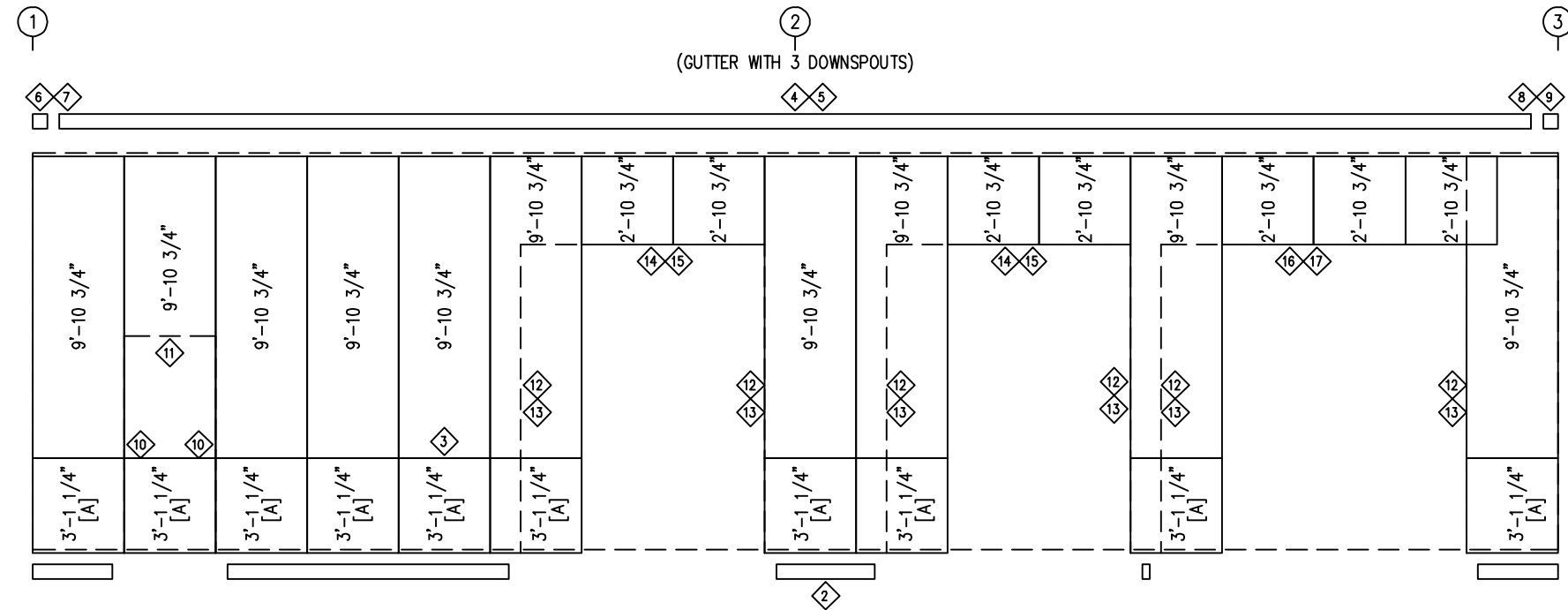
THIS SEAL PERTAINS ONLY TO THE MATERIALS DESIGNED AND SUPPLIED BY GREAT WESTERN BUILDINGS. THE DRAWINGS AND THE METAL BUILDING WHICH THEY REPRESENT ARE THE PRODUCT OF GREAT WESTERN BUILDINGS. THE REGISTERED PROFESSIONAL ENGINEER WHOSE SEAL AND SIGNATURE APPEARS ON THESE DRAWINGS IS EMPLOYED BY GREAT WESTERN BUILDINGS AND DOES NOT SERVE AS OR REPRESENT THE OVERALL PROJECT ENGINEER OF RECORD AND SHALL NOT BE CONSTRUED AS SUCH.



RIGID FRAME ELEVATION: FRAME LINE 2



SIDEWALL FRAMING: FRAME LINE A
NOTE: F.L.F.O. = Field Located Frame Opening



SIDEWALL SHEETING & TRIM: FRAME LINE A
PANELS: 26 GA. PBR - POLAR WHITE
[A] PANELS: 26 GA. PBR - COAL BLACK

TRIM TABLE FRAME LINE A				
ID	QUAN	PART	LENGTH	DETAIL
1	2	FL-10	13'-0"	TD40
2	3	FL-60	10'-2"	TD74
3	3	FL-237	10'-2"	TD199
4	3	FL-32	10'-2"	TD15
5	5	FL-31	10'-2"	TD15
6	1	FL-32L	11'-2"	TD13
7	1	FL-33L	8"	TD85
8	1	FL-32R	11'-2"	TD13
9	1	FL-33R	8"	TD85
10	2	FL-48	7'-2"	TD51
11	1	FL-52	3'-4"	TD52
12	6	FL-55	10'-2"	TD51
13	6	FL-48	10'-2"	TD51
14	2	FL-55	8'-7"	TD52
15	2	FL-52	8'-4"	TD52
16	1	FL-55	10'-7"	TD52
17	1	FL-52	10'-4"	TD52

BOLT TABLE FRAME LINE A				
LOCATION	QUAN	TYPE	DIA	LENGTH
WF-1 - WF-2	8	A325	3/4"	2 1/4"
WF-1 - RF1-3	8	A325	5/8"	1 1/2"
WF-1 - EC-3	8	A325	5/8"	1 1/2"

MEMBER TABLE FRAME LINE A			
QUAN	MARK	PART	LENGTH
2	WF-1	W8X10	11'-4"
1	WF-2	W8X24	23'-3 3/16"
2	DJ-1	8x25C16	7'-0"
1	DJ-2	8x25C16	12'-3 7/16"
1	DJ-3	8x25C16	12'-3 7/16"
4	DJ-4	8x25C16	11'-1 13/16"
2	DH-1	8x25C16	7'-11 1/2"
1	DH-2	8x25C16	9'-11 1/2"
1	DH-3	GH-1	3'-0"
1	E-1	L10E16-3	24'-11 1/2"
1	E-2	L10E16-3	24'-11 1/2"
1	G-9	8X35Z16	15'-7 11/16"
1	G-10	8X25Z16	15'-7 11/16"
1	G-11	8X35Z16	1'-11 11/16"
1	G-12	8X25Z16	1'-11 11/16"
1	G-13	8X35Z16	1'-7 11/16"
1	G-14	8X25Z16	1'-7 11/16"

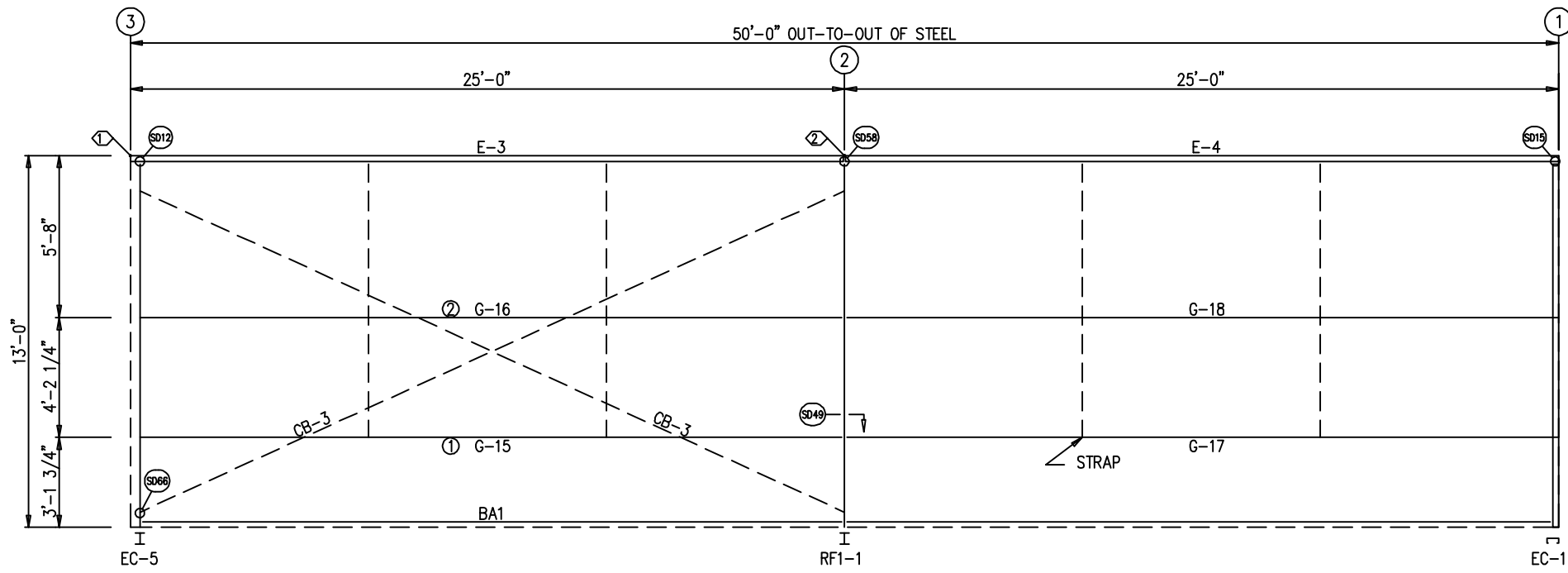
CONNECTION PLATES FRAME LINE A		
ID	QUAN	MARK
1	12	CL-103
2	4	GW-500
3	6	CL-100
4	4	4" ZEE - 7"

ISSUE	DATE	DWN.	CHK.	ENG.
APPROVAL	06/24/24	MEZ	MEZ	RTS
PERMIT	07/01/24	AA	CAF	RTS
ERECTION	07/15/24	PKD	PKD	RTS

1101 3RD AVE
GRAND JUNCTION, CO 81501
PHONE: (800)-497-2135
WWW.GREATWESTERNBUILDINGS.COM

CUSTOMER NAME:	
PROJECT NAME:	
PROJECT LOCATION:	
PROJECT COUNTY:	
PROJECT END USE:	
CUSTOMER PHONE NUMBER:	
CUSTOMER EMAIL:	
SCALE:	N.T.S.
SHEET NUMBER:	7 OF 18
JOB NUMBER:	94959
SHEET TITLE:	SIDEWALL FRAMING & SHEETING

THIS SEAL PERTAINS ONLY TO THE MATERIALS DESIGNED AND SUPPLIED BY GREAT WESTERN BUILDINGS. THE DRAWINGS AND THE METAL BUILDING WHICH THEY REPRESENT ARE THE PRODUCT OF GREAT WESTERN BUILDINGS. THE REGISTERED PROFESSIONAL ENGINEER WHOSE SEAL AND SIGNATURE APPEARS ON THESE DRAWINGS IS EMPLOYED BY GREAT WESTERN BUILDINGS AND DOES NOT SERVE AS OR REPRESENT THE OVERALL PROJECT ENGINEER OF RECORD AND SHALL NOT BE CONSTRUED AS SUCH.



SIDEWALL FRAMING: FRAME LINE D

TRIM TABLE FRAME LINE D				
OID	QUAN	PART	LENGTH	DETAIL
1	2	FL-10	13'-0"	TD40
2	5	FL-60	10'-2"	TD74
3	3	FL-32	10'-2"	TD15
4	5	FL-31	10'-2"	TD15
5	1	FL-32L	11'-2"	TD13
6	1	FL-33L	8"	TD85
7	1	FL-32R	11'-2"	TD13
8	1	FL-33R	8"	TD85
9	5	FL-237	10'-2"	TD199

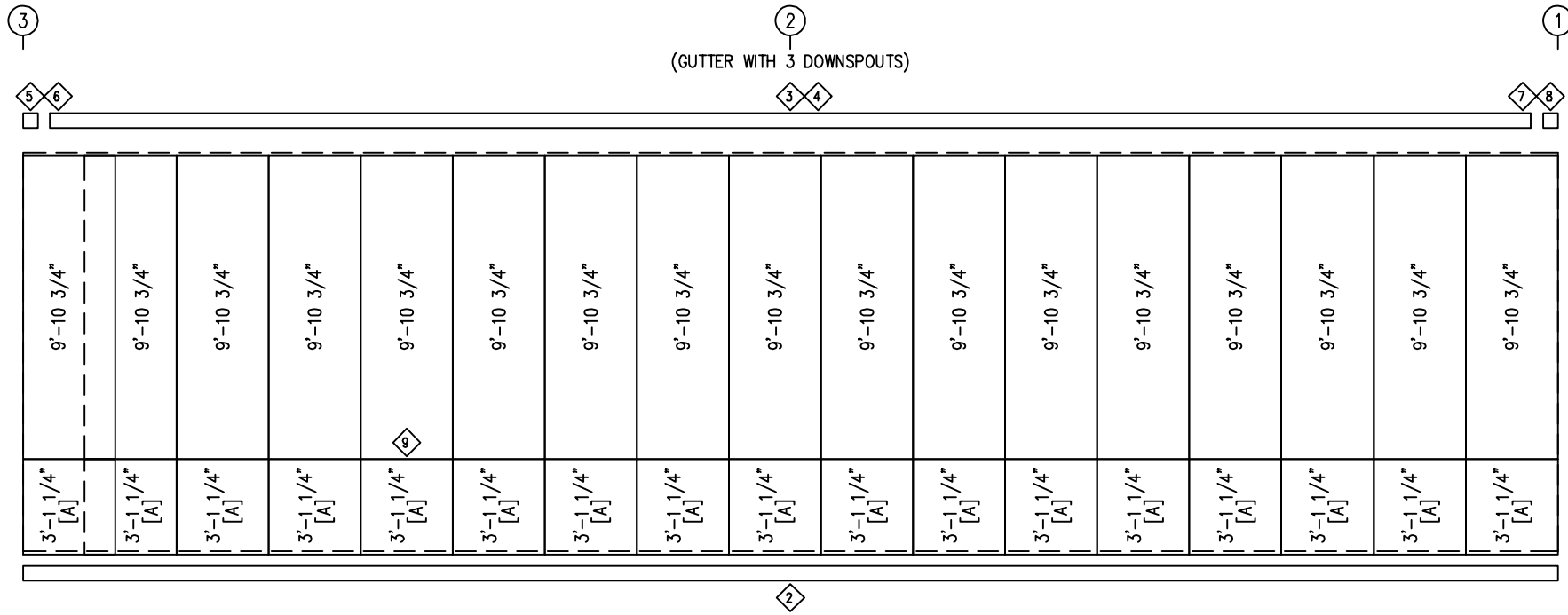
MEMBER TABLE FRAME LINE D				
QUAN	MARK	PART	LENGTH	
1	E-3	L10E16-3	24'-11 1/2"	
1	E-4	L10E16-3	24'-11 1/2"	
1	G-15	8X35Z16	23'-11 13/16"	
1	G-16	8X35Z14	23'-11 13/16"	
1	G-17	8X35Z16	24'-7 11/16"	
1	G-18	8X35Z14	24'-7 11/16"	
2	CB-3	RD0625	27'-7 1/4"	

SPECIAL BOLTS					
OID	QUAN	TYPE	DIA	LENGTH	WASH
1	4	A307	1/2"	1 1/4"	8
2	4	A307	1/2"	1 1/4"	8

FIELD WORK TABLE FRAME LINE D			
OID	DETAIL	DIMENSION 1	DIMENSION 2
1	SD202	5'-4 3/4"	18'-7"
2	SD202	9'-4 11/16"	14'-7 1/16"

ISSUE	DATE	DWN.	CHK.	ENG.
APPROVAL	06/24/24	MEZ	MEZ	RTS
PERMIT	07/01/24	AA	CAF	RTS
ERECTION	07/15/24	PKD	PKD	RTS

1101 3RD AVE
GRAND JUNCTION, CO 81501
PHONE: (800)-497-2135
WWW.GREATWESTERNBUILDINGS.COM

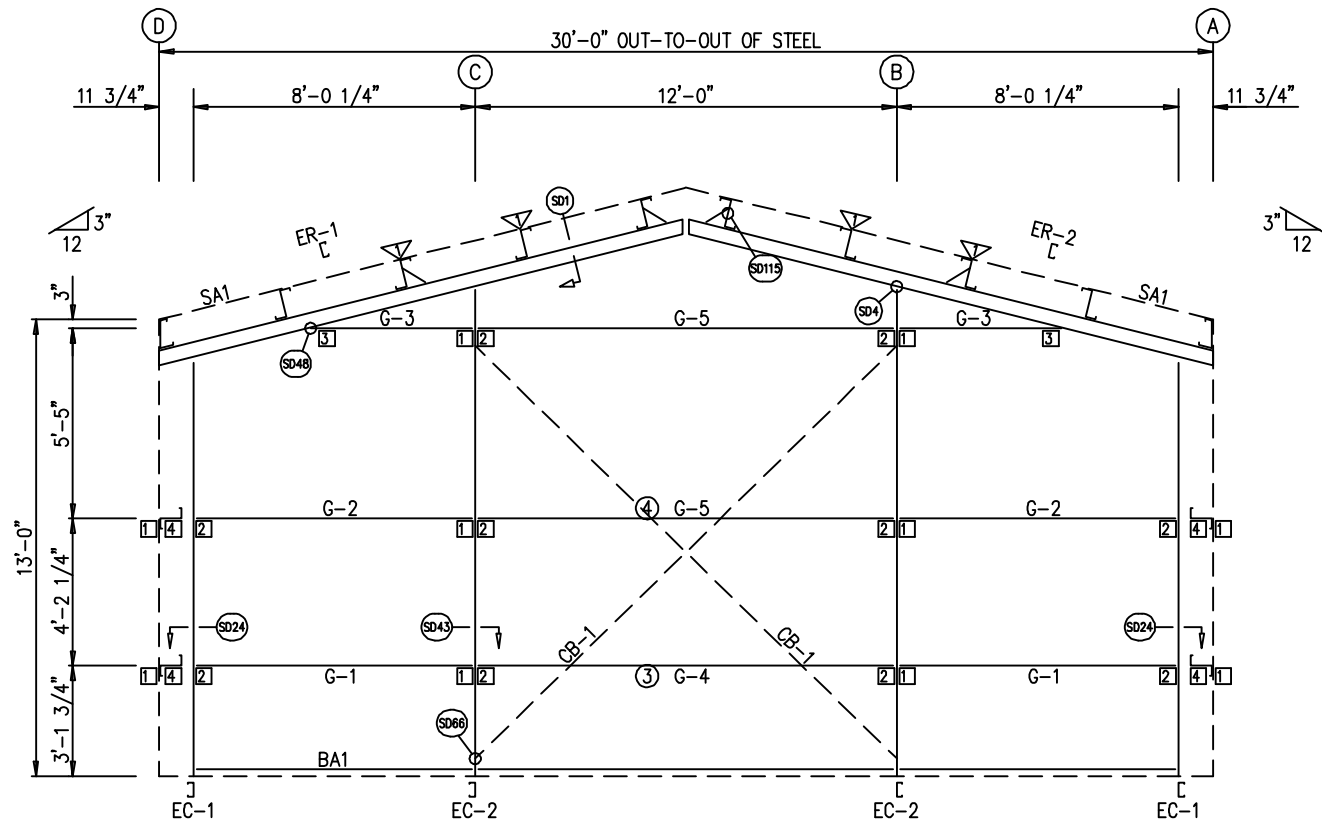


SIDEWALL SHEETING & TRIM: FRAME LINE D

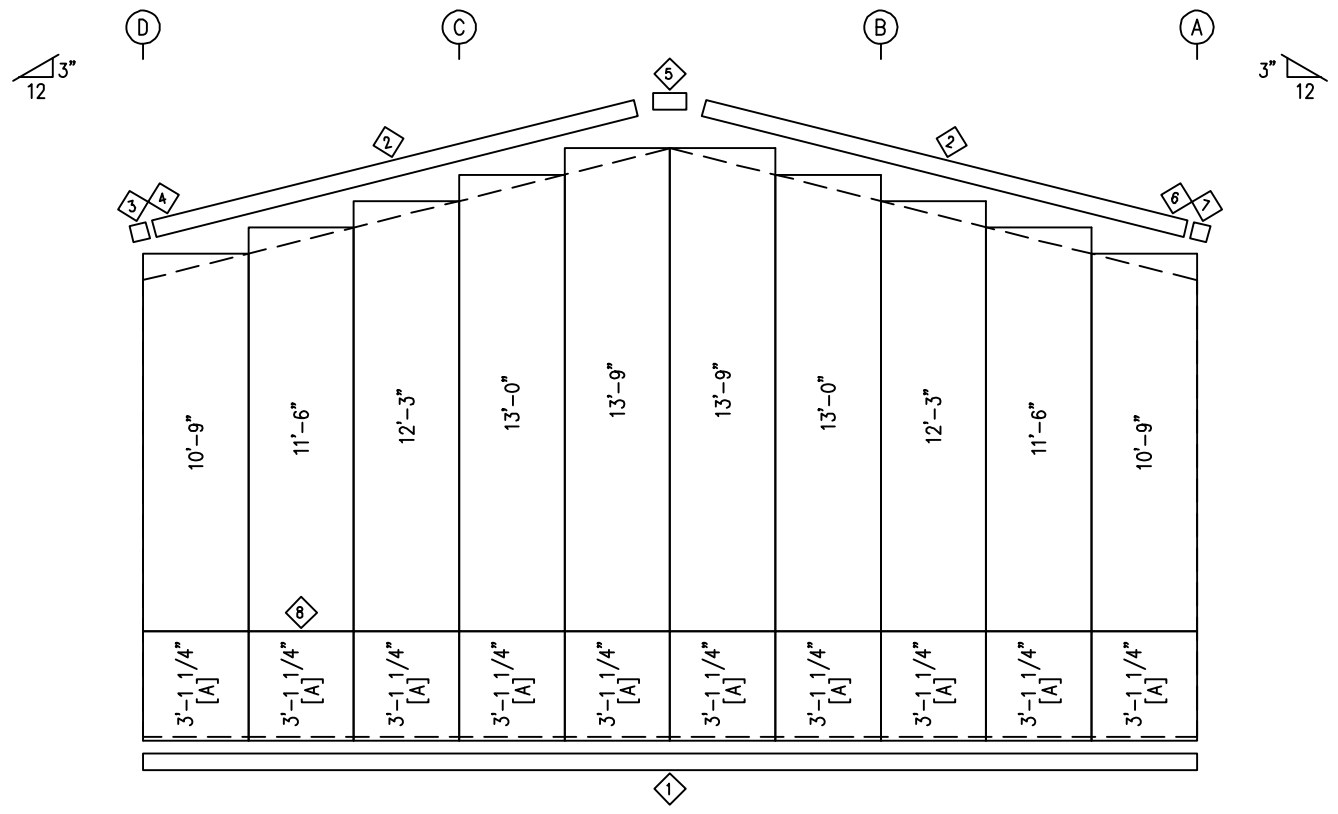
PANELS: 26 GA. PBR - POLAR WHITE
[A] PANELS: 26 GA. PBR - COAL BLACK

CUSTOMER NAME:	
PROJECT NAME:	
PROJECT LOCATION:	
PROJECT COUNTY:	
PROJECT END USE:	
CUSTOMER PHONE NUMBER:	
CUSTOMER EMAIL:	
SCALE:	N.T.S.
SHEET NUMBER:	8 OF 18
JOB NUMBER:	94959
SHEET TITLE:	SIDEWALL FRAMING & SHEETING

THIS SEAL PERTAINS ONLY TO THE MATERIALS DESIGNED AND SUPPLIED BY GREAT WESTERN BUILDINGS. THE DRAWINGS AND THE METAL BUILDING WHICH THEY REPRESENT ARE THE PRODUCT OF GREAT WESTERN BUILDINGS. THE REGISTERED PROFESSIONAL ENGINEER WHOSE SEAL AND SIGNATURE APPEARS ON THESE DRAWINGS IS EMPLOYED BY GREAT WESTERN BUILDINGS AND DOES NOT SERVE AS OR REPRESENT THE OVERALL PROJECT ENGINEER OF RECORD AND SHALL NOT BE CONSTRUED AS SUCH.



ENDWALL FRAMING: FRAME LINE 1



ENDWALL SHEETING & TRIM: FRAME LINE 1

PANELS: 26 GA. PBR - POLAR WHITE
 [A] PANELS: 26 GA. PBR - COAL BLACK

TRIM TABLE FRAME LINE 1					ENG.
ID	QUAN	PART	LENGTH	DETAIL	CHK.
1	3	FL-60	10'-2"	TD74	RTS
2	2	FL-21	5'-6"	TD35	RTS
3	1	FL-21L	11'-2"	TD85	RTS
4	1	FL-328L	9 1/2"	TD13	RTS
5	1	FL-23	1'-4"		RTS
6	1	FL-21R	11'-2"	TD85	RTS
7	1	FL-328R	9 1/2"	TD13	RTS
8	3	FL-237	10'-2"	TD199	RTS

BOLT TABLE FRAME LINE 1				
LOCATION	QUAN	TYPE	DIA	LENGTH
ER-1/ER-2	4	A325	5/8"	1 1/2"
COLUMNS/RAFTER	2	A325	5/8"	1 1/2"

MEMBER TABLE FRAME LINE 1			
QUAN	MARK	PART	LENGTH
2	EC-1	8x25C16	11'-3 1/4"
2	EC-2	8x25C12	13'-3 5/16"
1	ER-1	12X35C12	15'-5 5/16"
1	ER-2	12X35C12	15'-5 5/16"
2	G-1	8X35Z16	7'-7 7/8"
2	G-2	8X25Z16	7'-7 7/8"
2	G-3	8X25Z16	1'-8 7/8"
1	G-4	8X35Z16	11'-11 1/2"
2	G-5	8X25Z16	11'-11 1/2"
2	CB-1	RD0500	17'-3 1/2"

FIELD WORK TABLE FRAME LINE 1			
ID	DETAIL	DIMENSION 1	DIMENSION 2
3	SD202	2'-8 3/16"	9'-3 5/16"
4	SD202	5'-0"	6'-11 1/2"

CONNECTION PLATES FRAME LINE 1		
ID	QUAN	MARK
1	10	CL-103
2	10	CL-100
3	2	CL-109D
4	4	CL-5

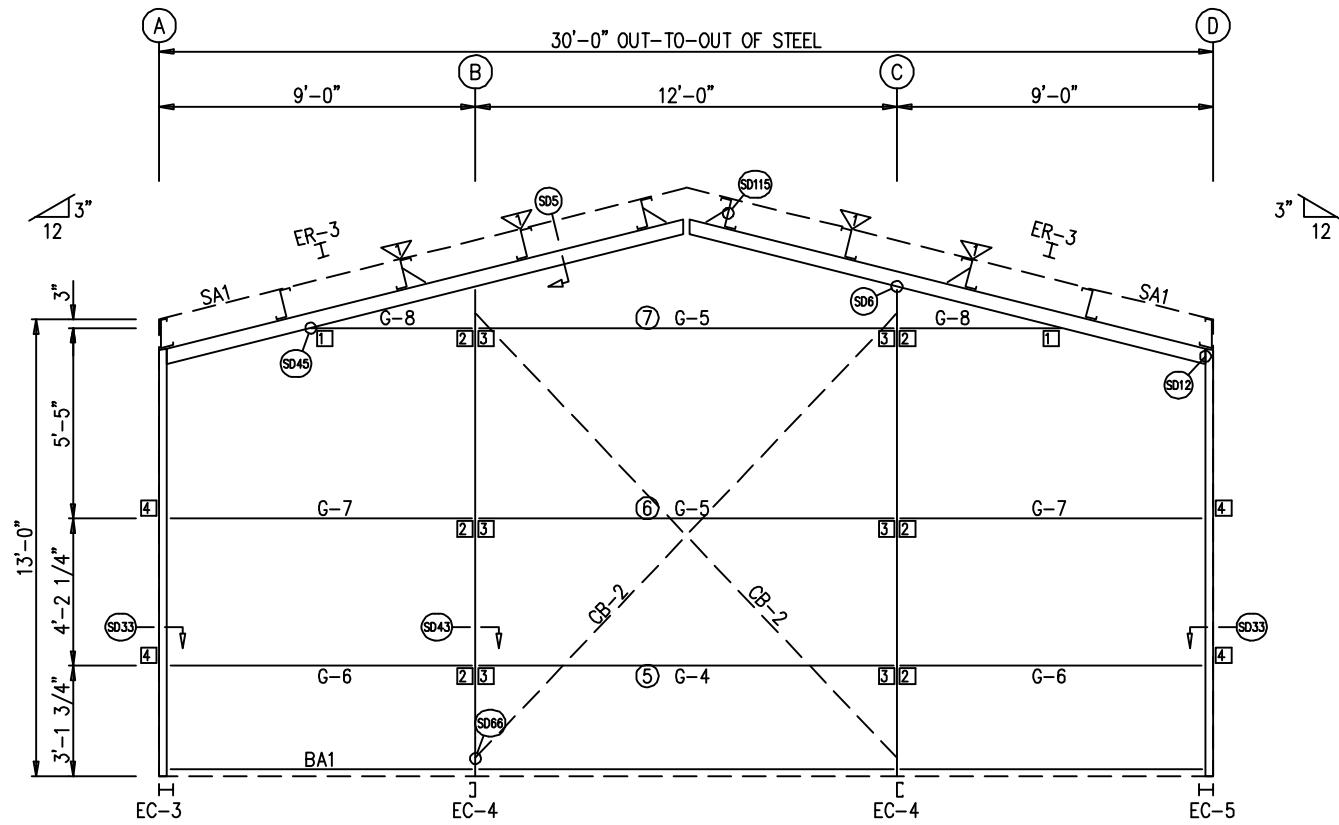
FLANGE BRACE TABLE FRAME LINE 1		
ID	QUAN	MARK
1	4	FB31.3

DATE	DWN.	CHK.	ENG.
06/20/24	MEZ	MEZ	RTS
07/01/24	AA	CAF	RTS
07/15/24	PKD	PKD	RTS

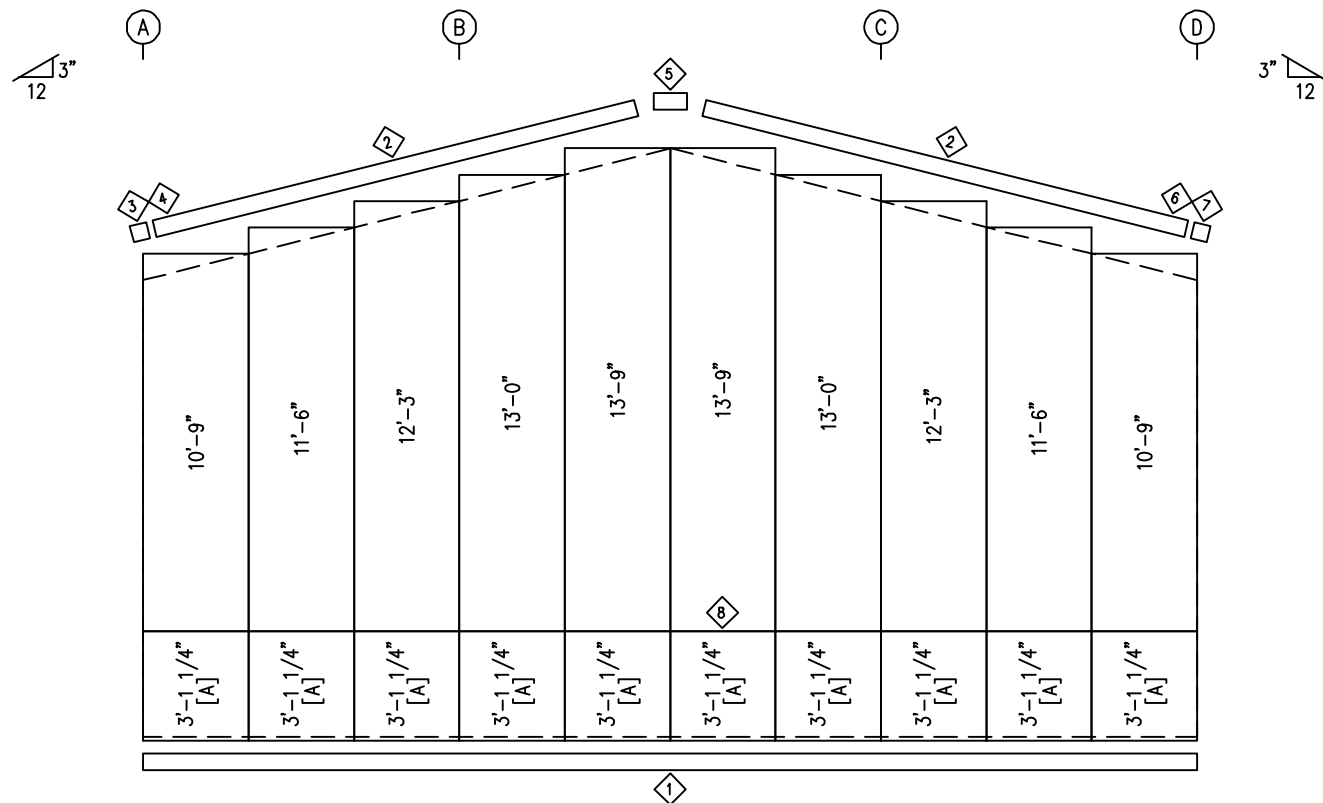
1101 3RD AVE
 GRAND JUNCTION, CO 81501
 PHONE: (800)-497-2135
 WWW.GREATWESTERNBUILDINGS.COM

CUSTOMER NAME:	
PROJECT NAME:	
PROJECT LOCATION:	
PROJECT COUNTY:	
PROJECT END USE:	
CUSTOMER PHONE NUMBER:	
CUSTOMER EMAIL:	
SCALE:	N.T.S.
SHEET NUMBER:	9 OF 18
JOB NUMBER:	94959
SHEET TITLE:	ENDWALL FRAMING & SHEETING

THIS SEAL PERTAINS ONLY TO THE MATERIALS DESIGNED AND SUPPLIED BY GREAT WESTERN BUILDINGS. THE DRAWINGS AND THE METAL BUILDING WHICH THEY REPRESENT ARE THE PRODUCT OF GREAT WESTERN BUILDINGS. THE REGISTERED PROFESSIONAL ENGINEER WHOSE SEAL AND SIGNATURE APPEARS ON THESE DRAWINGS IS EMPLOYED BY GREAT WESTERN BUILDINGS AND DOES NOT SERVE AS OR REPRESENT THE OVERALL PROJECT ENGINEER OF RECORD AND SHALL NOT BE CONSTRUED AS SUCH.



ENDWALL FRAMING: FRAME LINE 3



ENDWALL SHEETING & TRIM: FRAME LINE 3

PANELS: 26 GA. PBR - POLAR WHITE
 [A] PANELS: 26 GA. PBR - COAL BLACK

TRIM TABLE
 FRAME LINE 3

ID	QUAN	PART	LENGTH	DETAIL
1	3	FL-60	10'-2"	TD74
2	2	FL-21	5'-6"	TD35
3	1	FL-21L	11'-2"	TD85
4	1	FL-328L	9 1/2"	TD13
5	1	FL-23	1'-4"	
6	1	FL-21R	11'-2"	TD85
7	1	FL-328R	9 1/2"	TD13
8	3	FL-237	10'-2"	TD199

BOLT TABLE
 FRAME LINE 3

LOCATION	QUAN	TYPE	DIA	LENGTH
COR_COLUMN/RAFTER	4	A325	5/8"	1 1/2"
ER-3/ER-3	8	A325	5/8"	1 1/2"
INT_COLUMN/RAFTER	2	A325	5/8"	1 1/2"

MEMBER TABLE
 FRAME LINE 3

QUAN	MARK	PART	LENGTH
1	EC-3	W8X10	12'-3 7/16"
2	EC-4	8x25C12	13'-7 9/16"
1	EC-5	W8X10	12'-3 7/16"
2	ER-3	W8X10	14'-11 3/8"
1	G-4	8X35Z16	11'-11 1/2"
2	G-5	8X25Z16	11'-11 1/2"
2	G-6	8X35Z16	7'-11 3/4"
2	G-7	8X25Z16	7'-11 3/4"
2	G-8	8X25Z16	3'-1 7/8"
2	CB-2	RD0500	17'-11 1/4"

FIELD WORK TABLE
 FRAME LINE 3

OID	DETAIL	DIMENSION 1	DIMENSION 2
5	SD202	2'-5 5/8"	9'-5 7/8"
6	SD202	5'-6 3/16"	6'-5 5/16"
7	SD202	0'-4 9/16"	11'-6 15/16"

CONNECTION PLATES
 FRAME LINE 3

ID	QUAN	MARK
1	2	CL-109D
2	6	CL-103
3	6	CL-100
4	6	4" ZEE - 7"

FLANGE BRACE TABLE
 FRAME LINE 3

ID	QUAN	MARK
1	4	FB29.5

ISSUE	DATE	DWN.	CHK.	ENG.
APPROVAL	06/24/24	MEZ	RTS	
PERMIT	07/01/24	AA	CAF	
ERECTION	07/15/24	PKD	RTS	

1101 3RD AVE
 GRAND JUNCTION, CO 81501
 PHONE: (800)-497-2135
 WWW.GREATWESTERNBUILDINGS.COM

CUSTOMER NAME:	
PROJECT NAME:	
PROJECT LOCATION:	
PROJECT COUNTY:	
PROJECT END USE:	
CUSTOMER PHONE NUMBER:	
CUSTOMER EMAIL:	
SCALE:	N.T.S.
SHEET NUMBER:	10 OF 18
JOB NUMBER:	94959
SHEET TITLE:	ENDWALL FRAMING & SHEETING

THIS SEAL PERTAINS ONLY TO THE MATERIALS DESIGNED AND SUPPLIED BY GREAT WESTERN BUILDINGS. THE DRAWINGS AND THE METAL BUILDING WHICH THEY REPRESENT ARE THE PRODUCT OF GREAT WESTERN BUILDINGS. THE REGISTERED PROFESSIONAL ENGINEER WHOSE SEAL AND SIGNATURE APPEARS ON THESE DRAWINGS IS EMPLOYED BY GREAT WESTERN BUILDINGS AND DOES NOT SERVE AS OR REPRESENT THE OVERALL PROJECT ENGINEER OF RECORD AND SHALL NOT BE CONSTRUED AS SUCH.

TRIM TABLE
ROOF PLAN

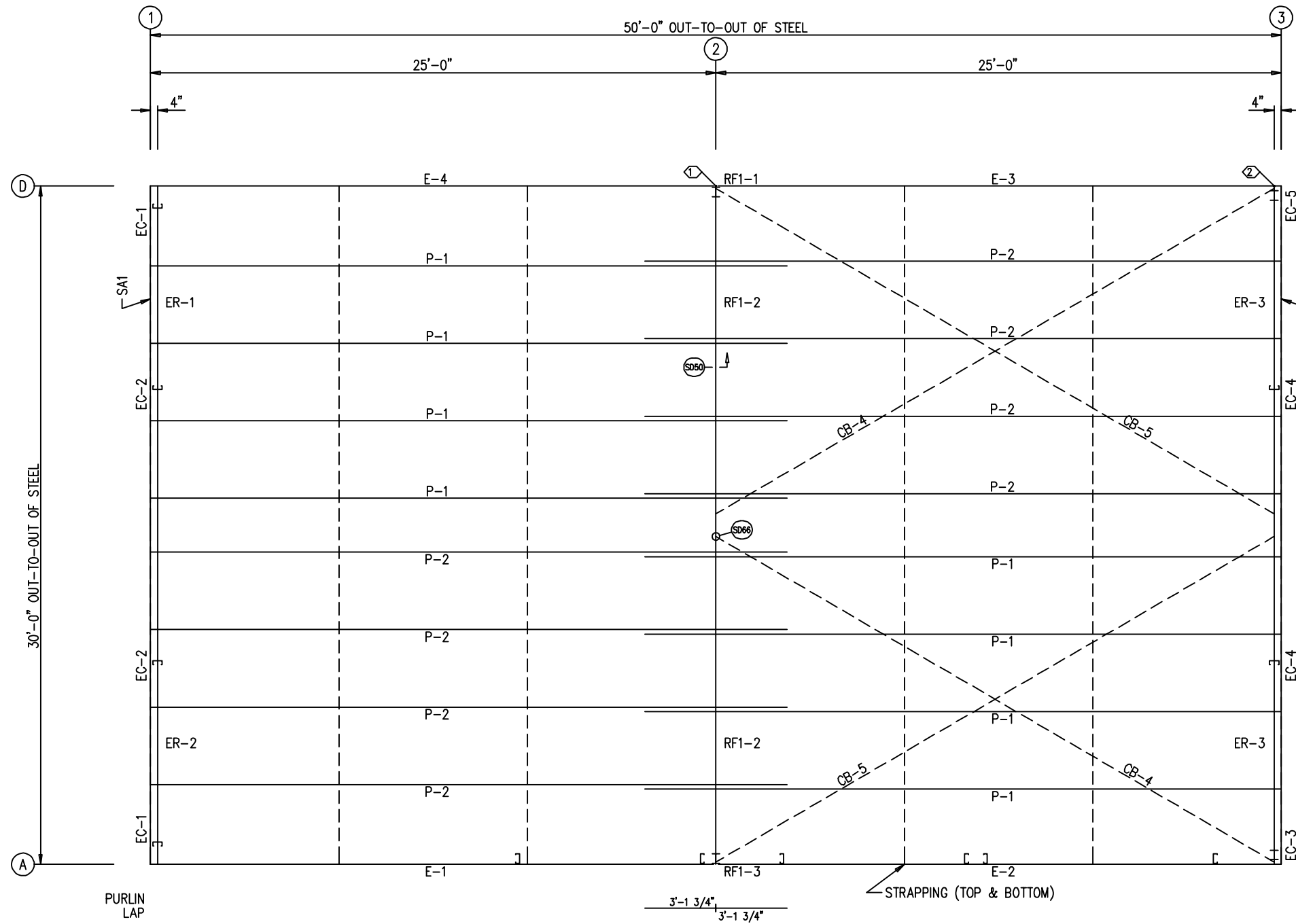
◇ ID	QUAN	PART	LENGTH	DETAIL
1	17	PS-26R	3'-0"	TD8

MEMBER TABLE
ROOF PLAN

QUAN	MARK	PART	LENGTH
8	P-1	10X35Z12	28'-1 1/2"
8	P-2	10X35Z12	28'-1 1/2"
1	E-1	L10E16-3	24'-11 1/2"
1	E-2	L10E16-3	24'-11 1/2"
1	E-3	L10E16-3	24'-11 1/2"
1	E-4	L10E16-3	24'-11 1/2"
2	CB-4	RD0500	28'-2 1/4"
2	CB-5	RD0500	29'-0"

SPECIAL BOLTS
ROOF PLAN

◇ ID	QUAN	TYPE	DIA	LENGTH	WASH
1	4	A307	1/2"	1 1/4"	8
2	4	A307	1/2"	1 1/4"	8



ROOF FRAMING PLAN

ROOF SHEETING
PANELS: 26 GA. PBR POLAR WHITE

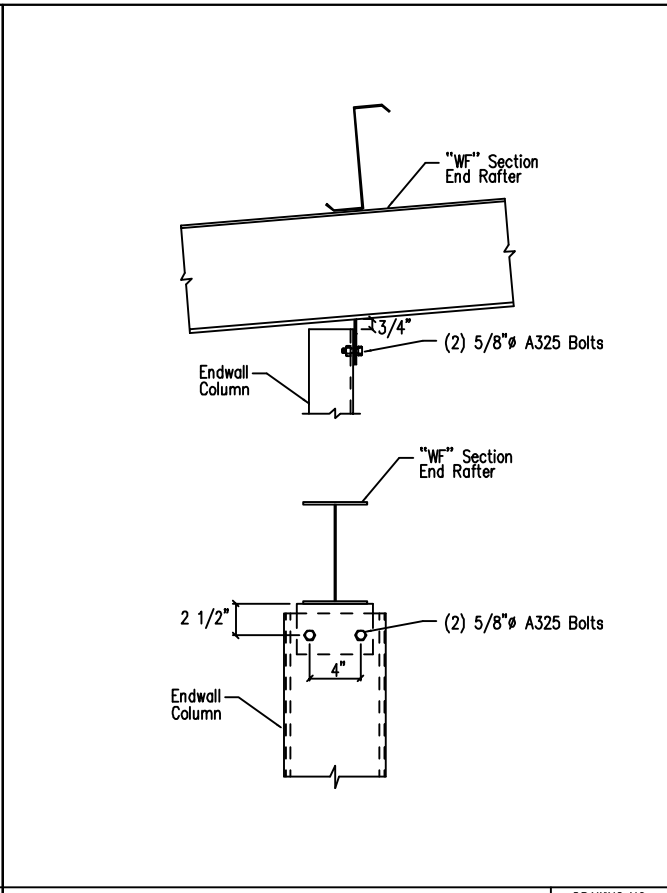
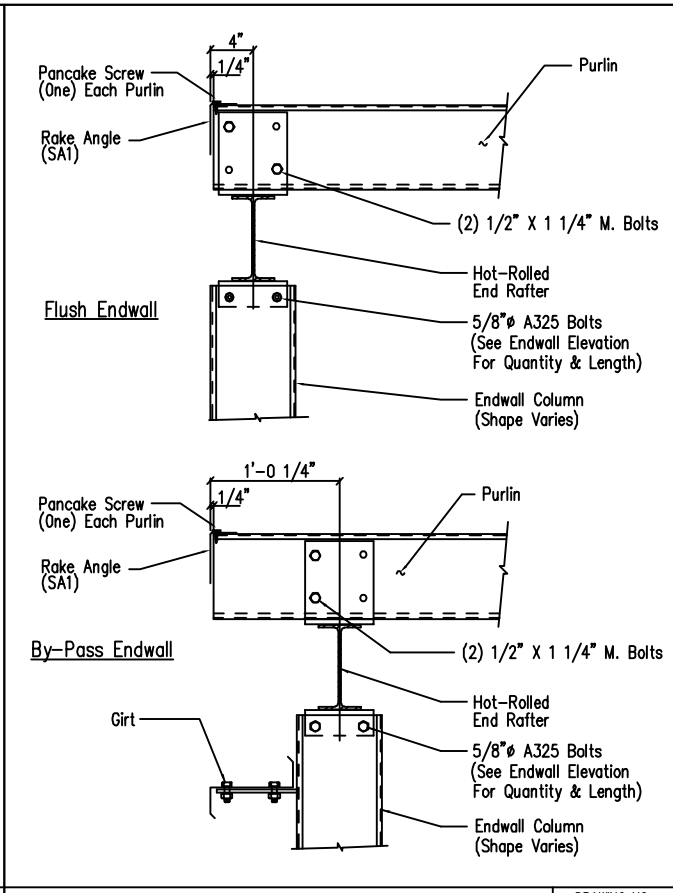
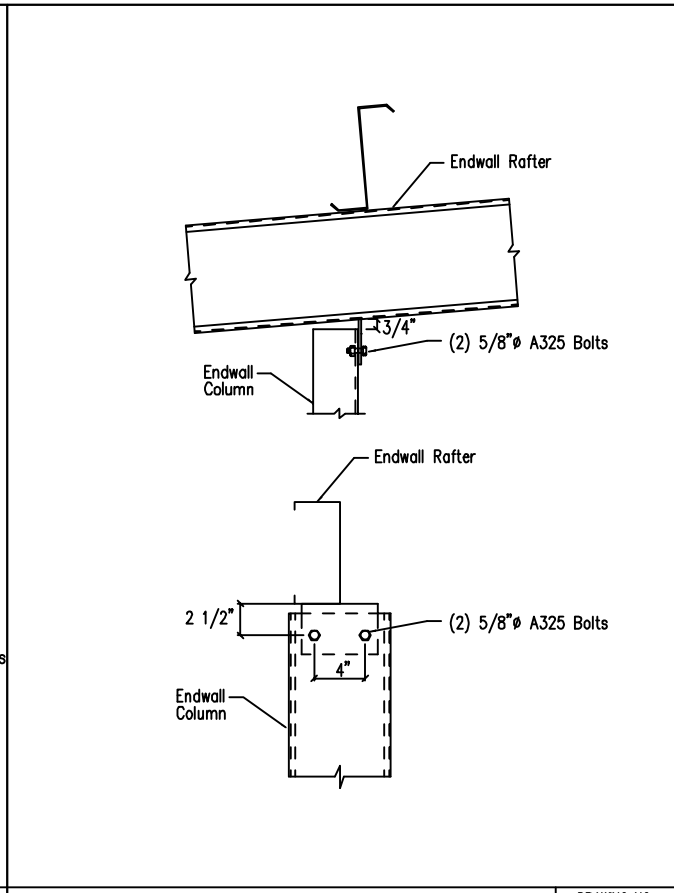
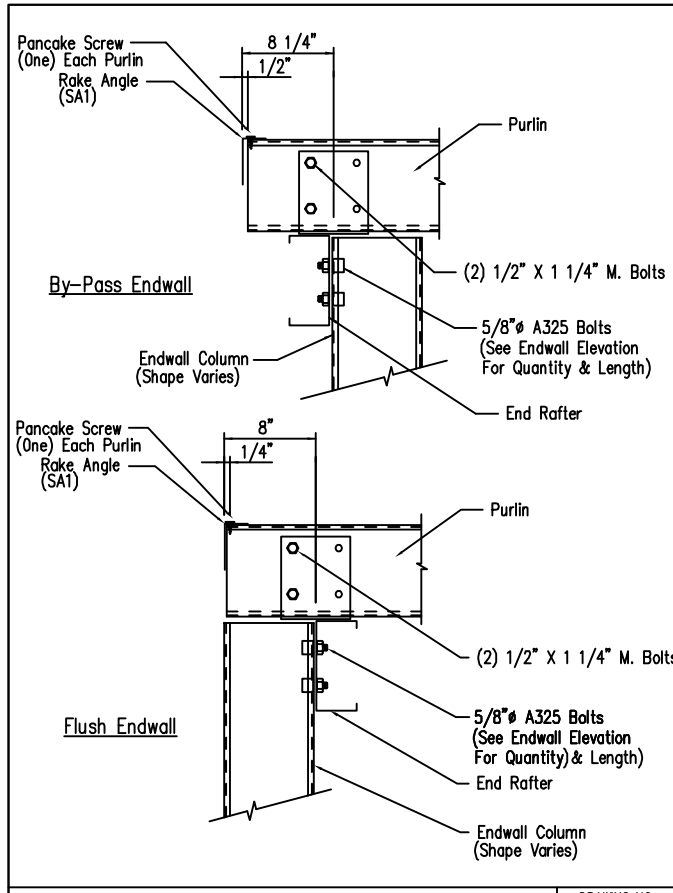
DATE	ISSUE	CHK.	ENG.
06/24/24	APPROVAL	MEZ	RTS
07/01/24	PERMIT	AA	RTS
07/15/24	ERECTION	PKD	RTS



1101 3RD AVE
GRAND JUNCTION, CO 81501
PHONE: (800)-497-2135
WWW.GREATWESTERNBUILDINGS.COM

CUSTOMER NAME:	
PROJECT NAME:	
PROJECT LOCATION:	
PROJECT COUNTY:	
PROJECT END USE:	
CUSTOMER PHONE NUMBER:	
CUSTOMER EMAIL:	
SCALE:	N.T.S.
SHEET NUMBER:	11 OF 18
JOB NUMBER:	94959
SHEET TITLE:	ROOF FRAMING & SHEETING PLAN

THIS SEAL PERTAINS ONLY TO THE MATERIALS DESIGNED AND SUPPLIED BY GREAT WESTERN BUILDINGS. THE DRAWINGS AND THE METAL BUILDING WHICH THEY REPRESENT ARE THE PRODUCT OF GREAT WESTERN BUILDINGS. THE REGISTERED PROFESSIONAL ENGINEER WHOSE SEAL AND SIGNATURE APPEARS ON THESE DRAWINGS IS EMPLOYED BY GREAT WESTERN BUILDINGS AND DOES NOT SERVE AS OR REPRESENT THE OVERALL PROJECT ENGINEER OF RECORD AND SHALL NOT BE CONSTRUED AS SUCH.

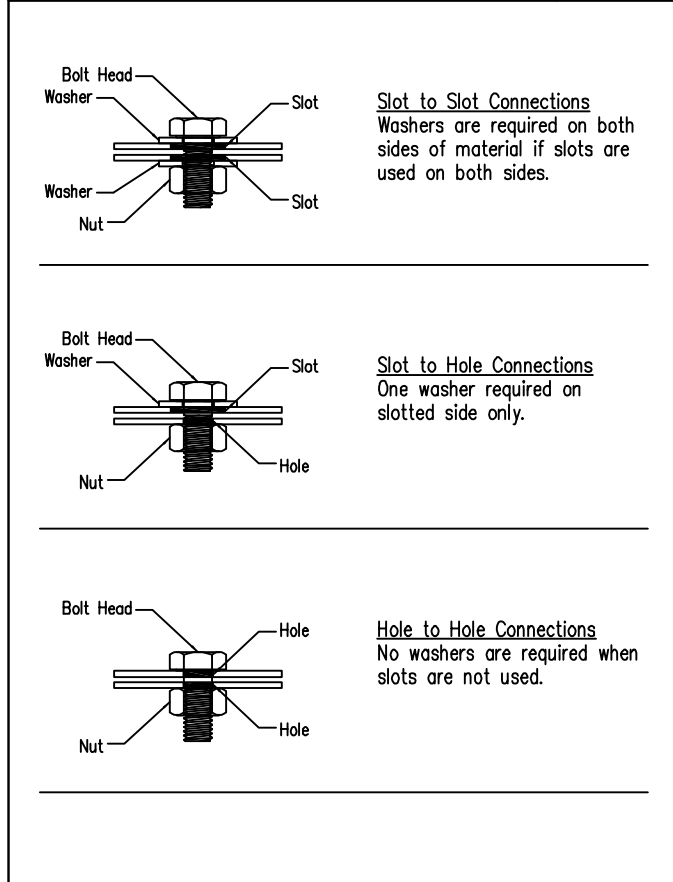


Section Thru Rake at Cold-Form Rafter
DRAWING NO. SD1

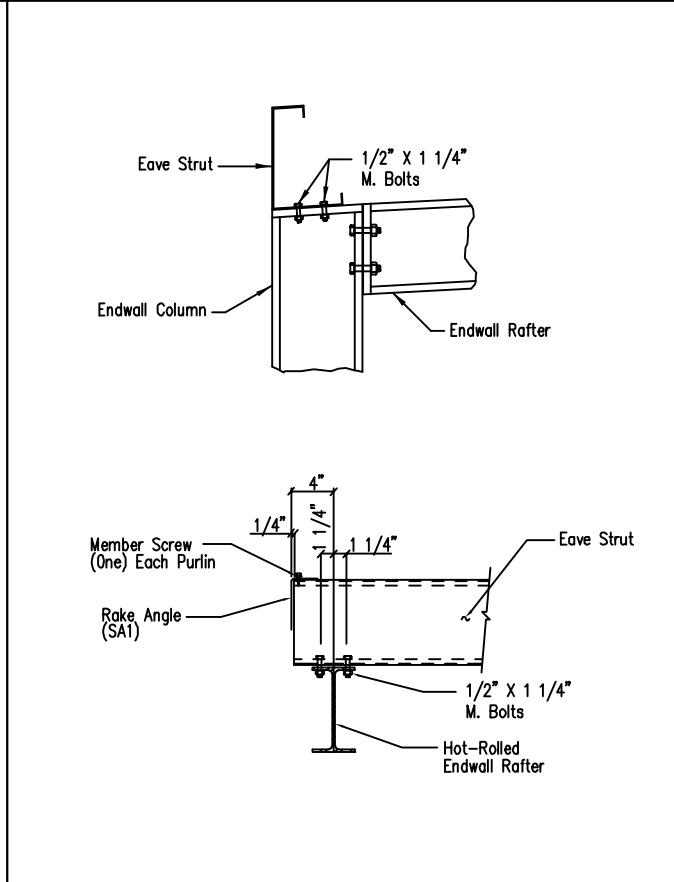
Cold Form Column to Cold Form Rafter
DRAWING NO. SD4

Section Thru Rake w/Hot Rolled Rafter
DRAWING NO. SD5

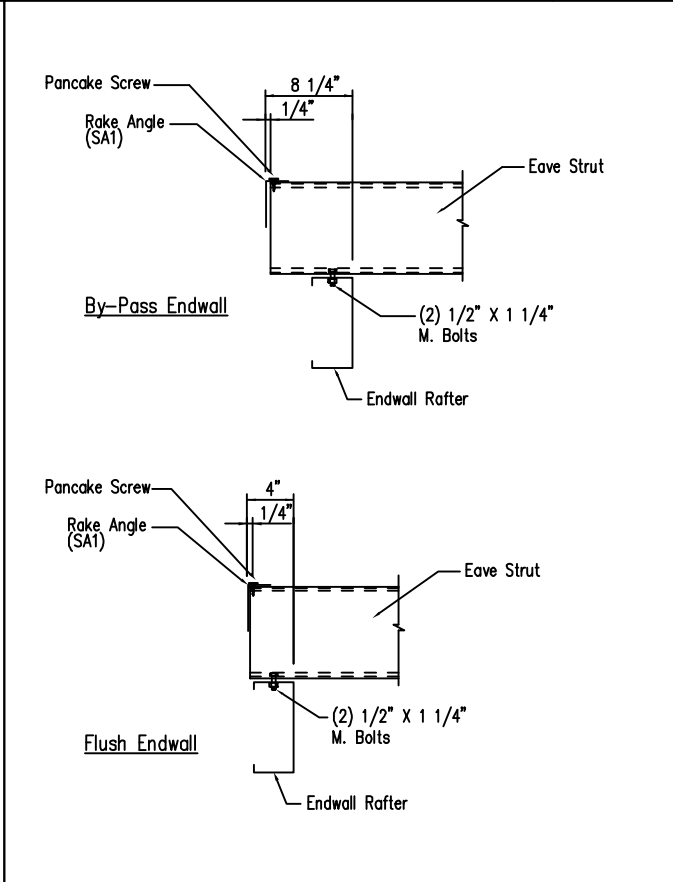
Cold Form Column to Hot Rolled Rafter
DRAWING NO. SD6



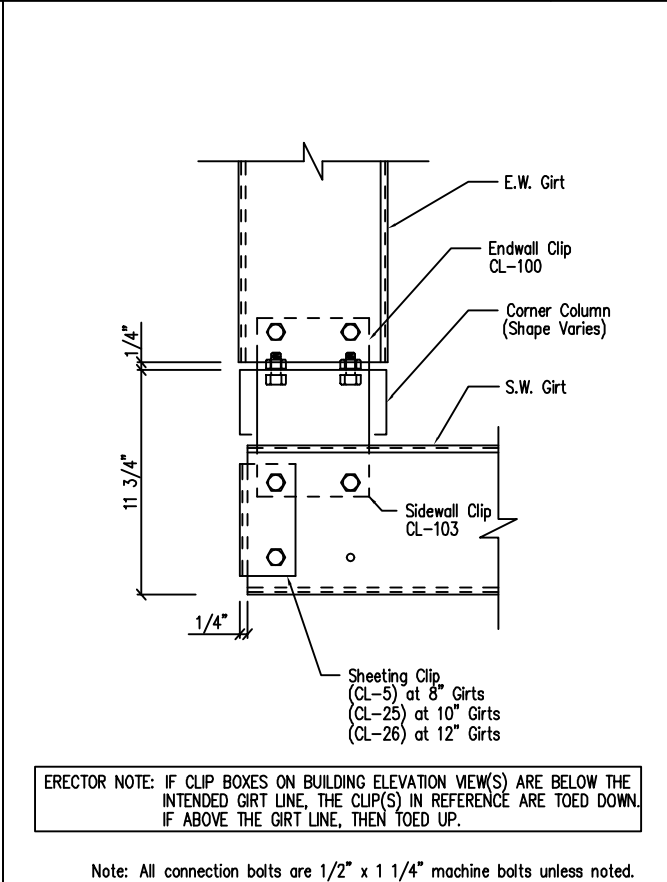
Typical Washer Requirements
DRAWING NO. SD11



Corner Column Connection WF Rafter/Column
Flush Sidewall
DRAWING NO. SD12



Eave Strut to Cold Form Rafter Connection
DRAWING NO. SD15



Section at "C" Corner Column
Flush Endwall
DRAWING NO. SD24

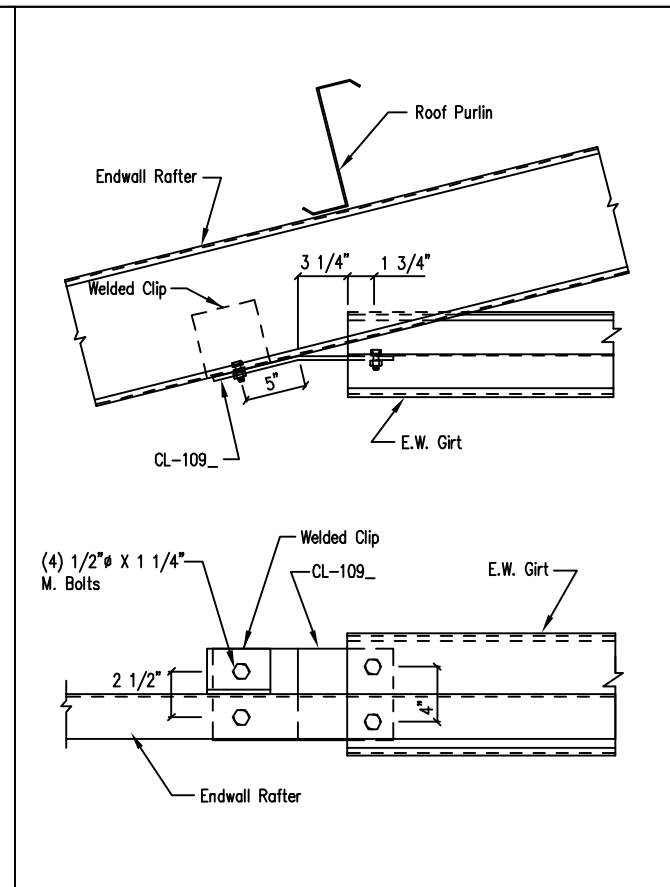
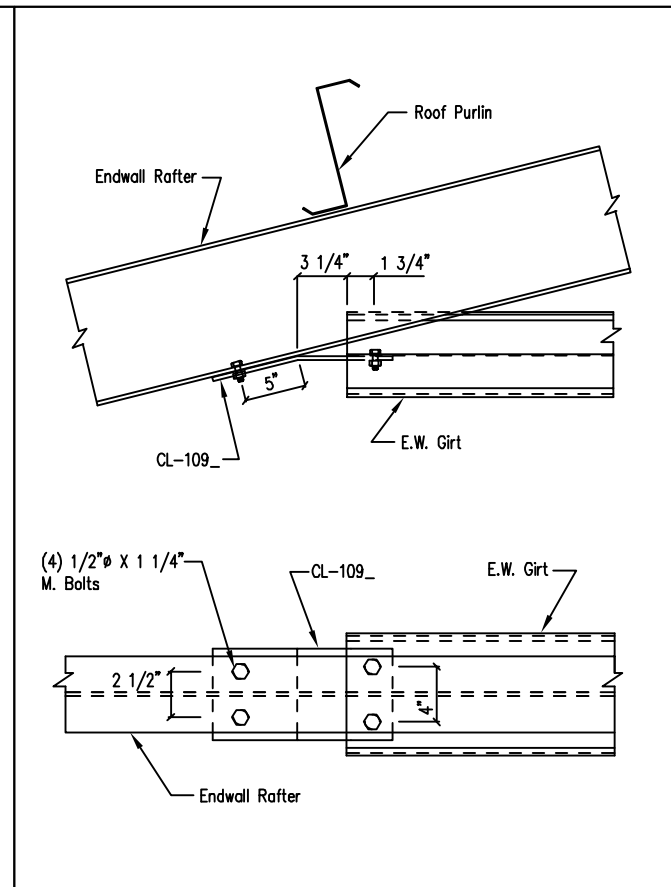
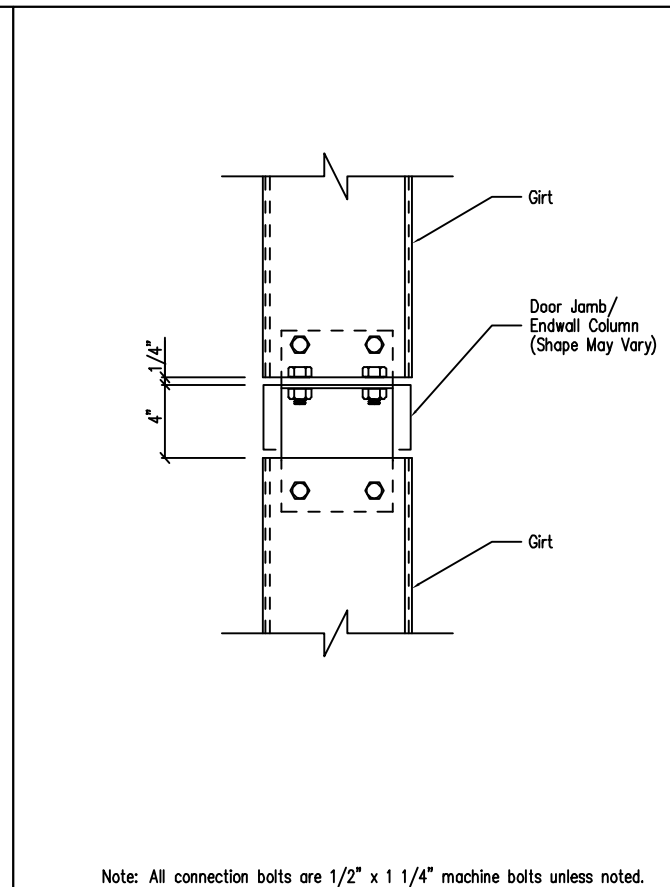
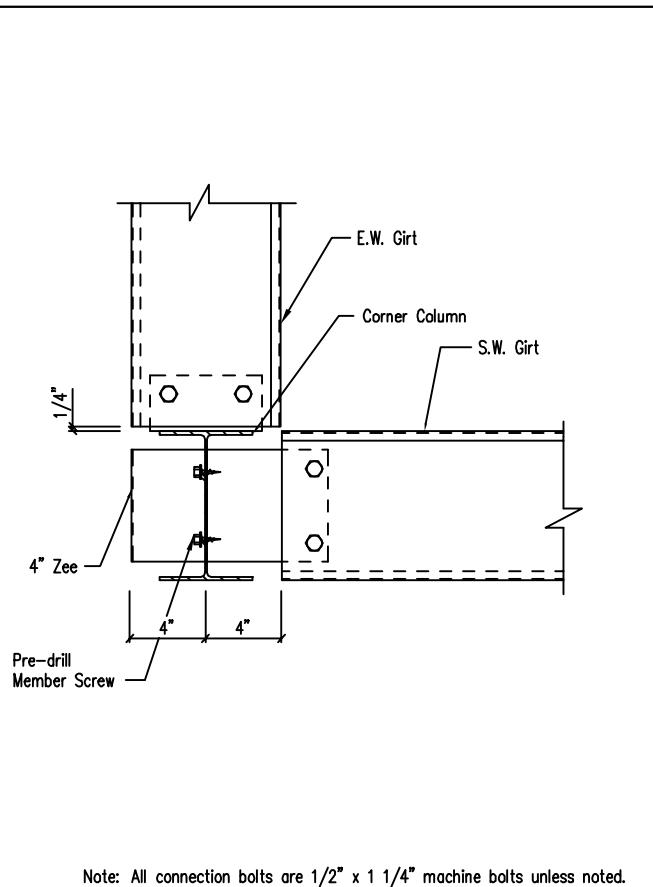
DATE	ISSUE	DWN.	CHK.	ENG.
06/20/24	APPROVAL	MEZ	MEZ	RTS
07/01/24	PERMIT	AA	CAF	RTS
07/15/24	ERECTION	PKD	PKD	RTS

1101 3RD AVE
GRAND JUNCTION, CO 81501
PHONE: (800)-497-2135
WWW.GREATWESTERNBUILDINGS.COM

CUSTOMER NAME:	
PROJECT NAME:	
PROJECT LOCATION:	
PROJECT COUNTY:	
PROJECT END USE:	
CUSTOMER PHONE NUMBER:	
CUSTOMER EMAIL:	
SCALE:	N.T.S.
SHEET NUMBER:	12 OF 18
JOB NUMBER:	94959
SHEET TITLE:	DETAIL DRAWINGS

THIS SEAL PERTAINS ONLY TO THE MATERIALS DESIGNED AND SUPPLIED BY GREAT WESTERN BUILDINGS. THE DRAWINGS AND THE METAL BUILDING WHICH THEY REPRESENT ARE THE PRODUCT OF GREAT WESTERN BUILDINGS. THE REGISTERED PROFESSIONAL ENGINEER WHOSE SEAL AND SIGNATURE APPEARS ON THESE DRAWINGS IS EMPLOYED BY GREAT WESTERN BUILDINGS AND DOES NOT SERVE AS OR REPRESENT THE OVERALL PROJECT ENGINEER OF RECORD AND SHALL NOT BE CONSTRUED AS SUCH.

THE REGISTERED PROFESSIONAL ENGINEER WHOSE SEAL AND SIGNATURE APPEARS ON THESE DRAWINGS IS EMPLOYED BY GREAT WESTERN BUILDINGS AND DOES NOT SERVE AS OR REPRESENT THE OVERALL PROJECT ENGINEER OF RECORD AND SHALL NOT BE CONSTRUED AS SUCH.

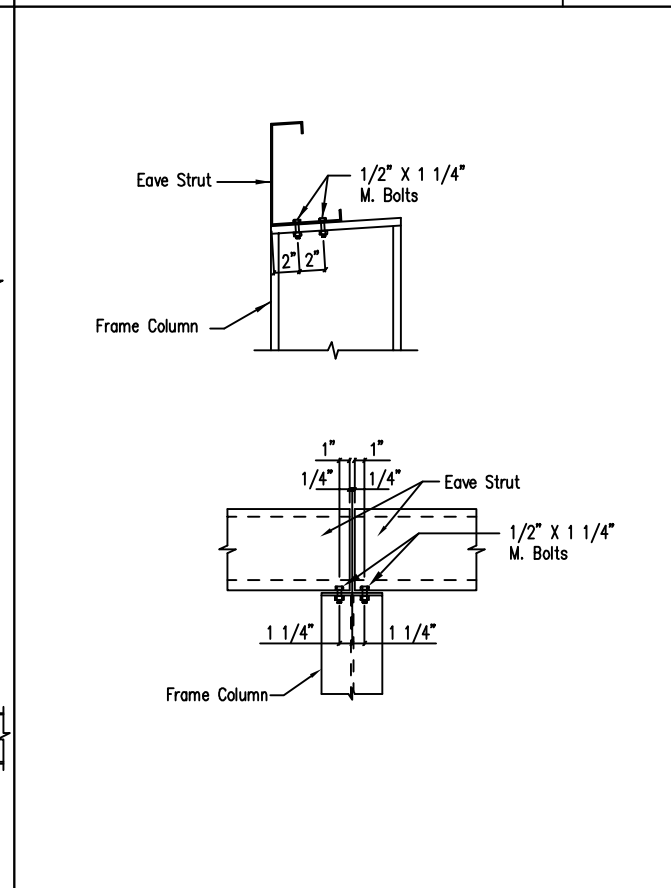
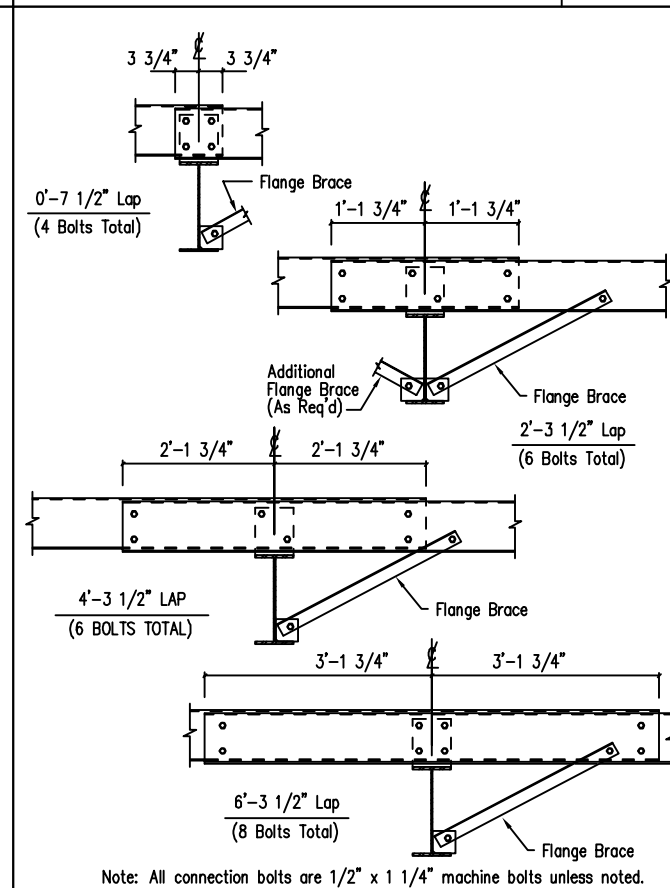
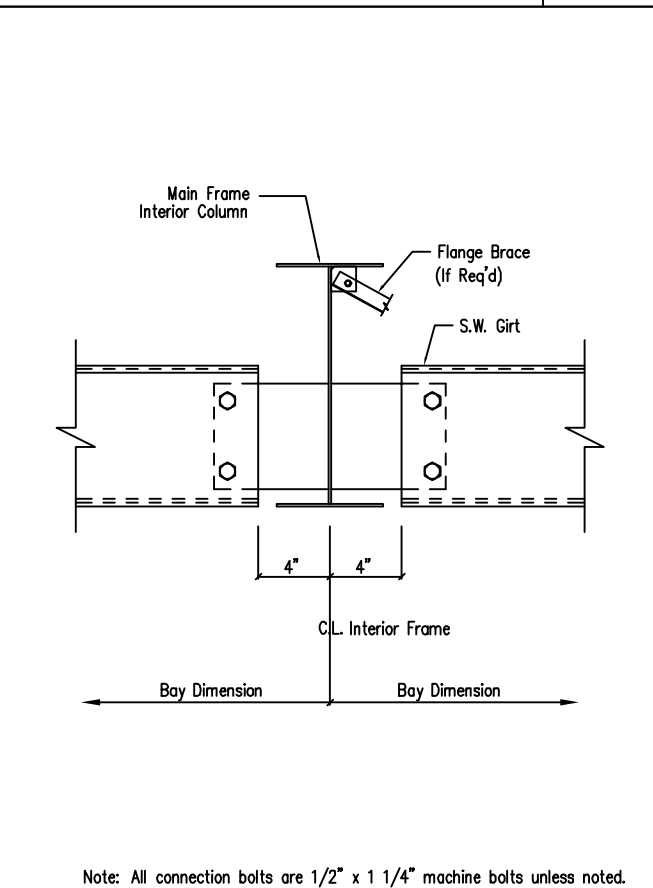


Note: All connection bolts are 1/2" x 1 1/4" machine bolts unless noted.
 Section at Hot Rolled Corner Column
 Flush Endwall - Flush Sidewall
 DRAWING NO. SD33

Note: All connection bolts are 1/2" x 1 1/4" machine bolts unless noted.
 Girt to "C" Door Jamb/Endwall Column Connection
 DRAWING NO. SD43

Endwall Girt to Hot Rolled Rafter
 DRAWING NO. SD45

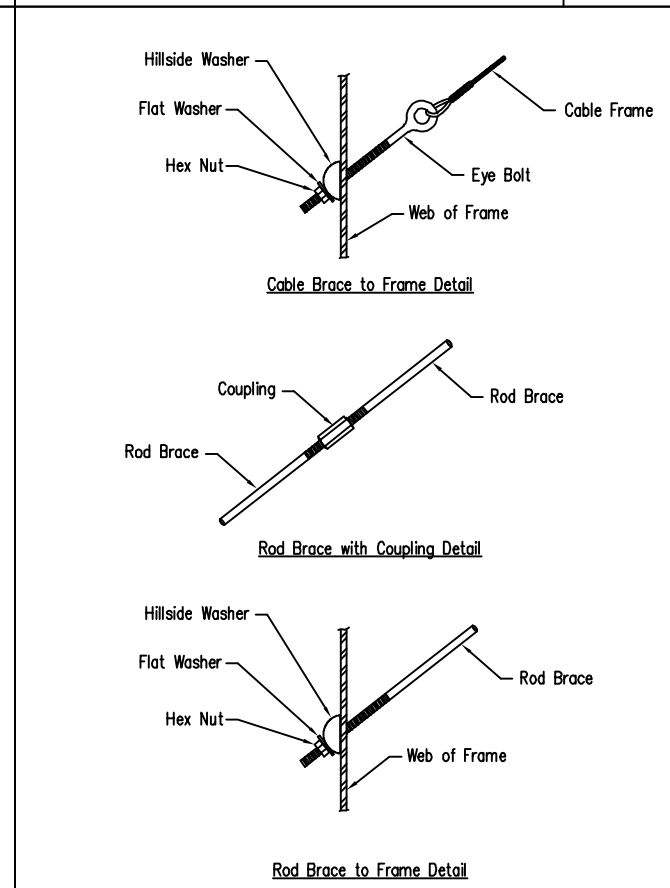
Endwall Girt to Cold Form Rafter
 DRAWING NO. SD48



Note: All connection bolts are 1/2" x 1 1/4" machine bolts unless noted.
 Section at Interior MF Column
 Flush Sidewall
 DRAWING NO. SD49

Note: All connection bolts are 1/2" x 1 1/4" machine bolts unless noted.
 Interior Bay Purlin Framing
 DRAWING NO. SD50

Eave Strut at Interior Column
 Flush Sidewall
 DRAWING NO. SD58



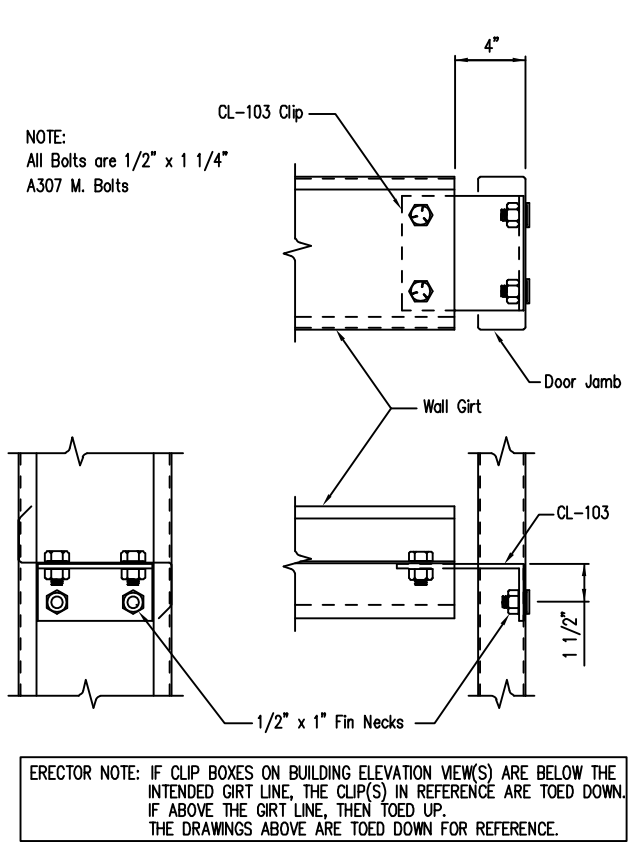
Cable or Rod Brace to Frame Connection
 DRAWING NO. SD66

DATE	DWN.	CHK.	ENG.
06/24/24	MEZ	MEZ	RTS
07/01/24	AA	CAF	RTS
07/15/24	PKD	PKD	RTS

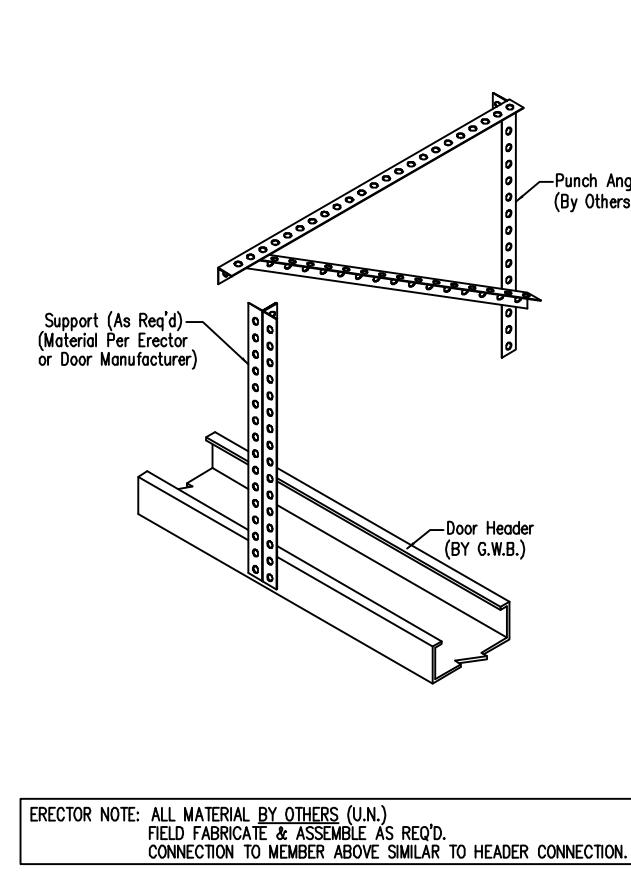
1101 3RD AVE
 GRAND JUNCTION, CO 81501
 PHONE: (800)-497-2135
 WWW.GREATWESTERNBUILDINGS.COM

CUSTOMER NAME:	
PROJECT NAME:	
PROJECT LOCATION:	
PROJECT COUNTY:	
PROJECT END USE:	
CUSTOMER PHONE NUMBER:	
CUSTOMER EMAIL:	
SCALE:	N.T.S.
SHEET NUMBER:	13 OF 18
JOB NUMBER:	94959
SHEET TITLE:	DETAIL DRAWINGS

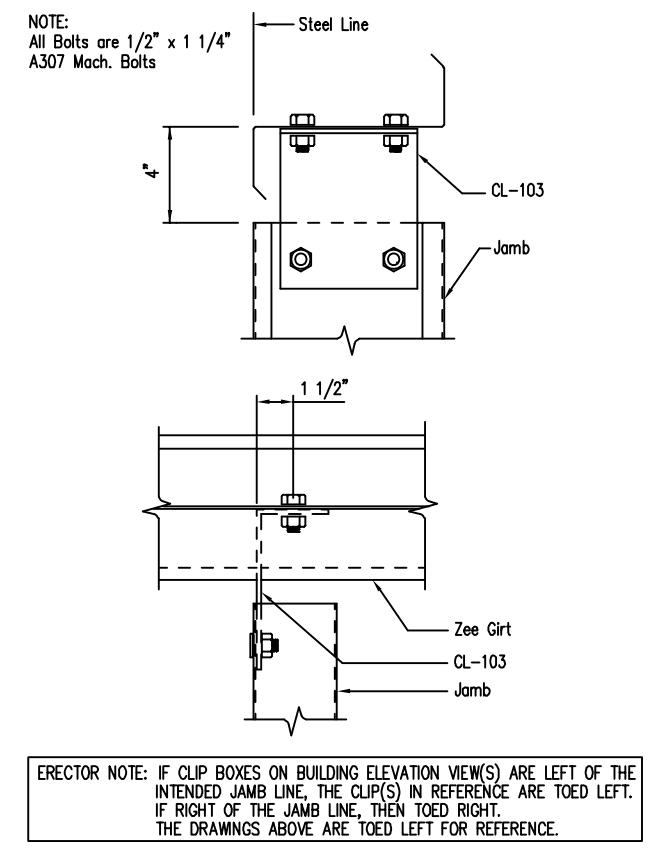
THIS SEAL PERTAINS ONLY TO THE MATERIALS DESIGNED AND SUPPLIED BY GREAT WESTERN BUILDINGS. THE DRAWINGS AND THE METAL BUILDING WHICH THEY REPRESENT ARE THE PRODUCT OF GREAT WESTERN BUILDINGS. THE REGISTERED PROFESSIONAL ENGINEER WHOSE SEAL AND SIGNATURE APPEARS ON THESE DRAWINGS IS EMPLOYED BY GREAT WESTERN BUILDINGS AND DOES NOT SERVE AS OR REPRESENT THE OVERALL PROJECT ENGINEER OF RECORD AND SHALL NOT BE CONSTRUED AS SUCH.



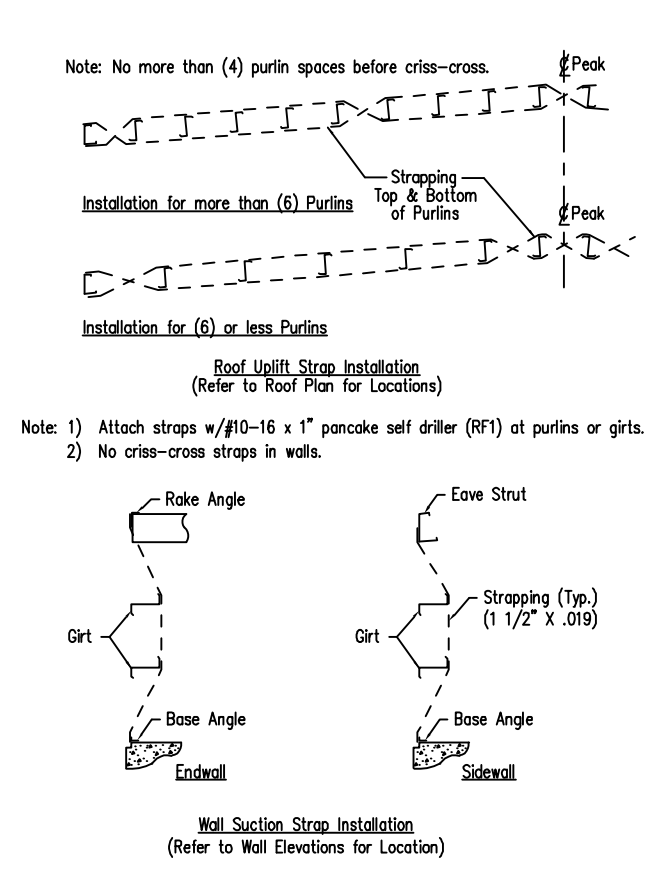
Girt to Jamb (Bolted Clips) DRAWING NO. SD87



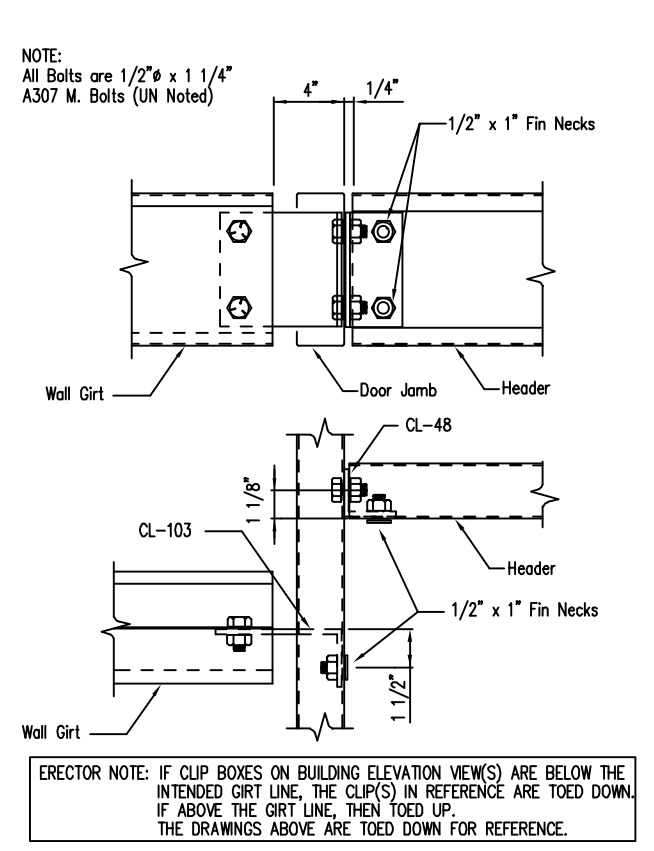
Overhead Door Torsion Bar Bearing Connection DRAWING NO. SD101



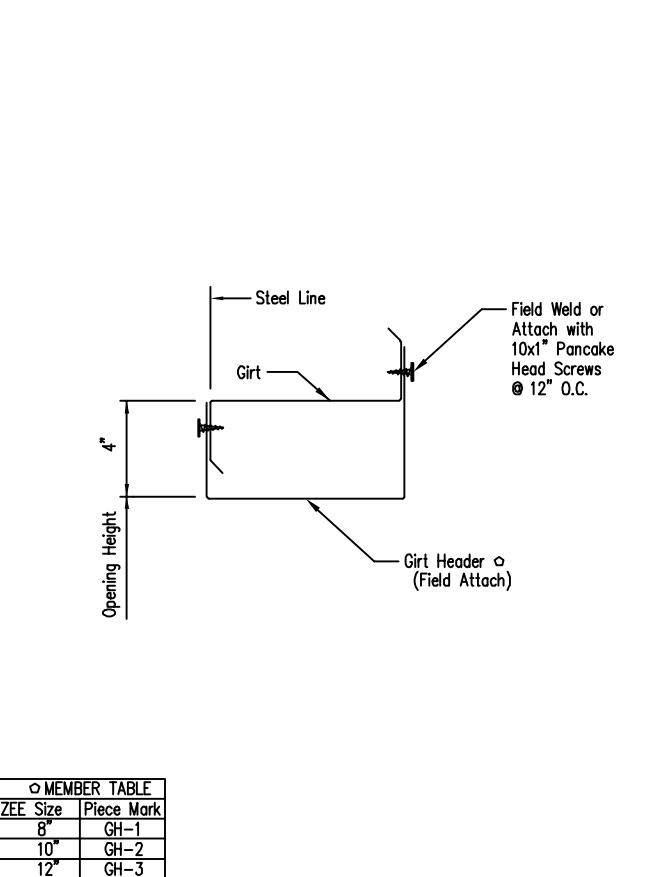
Jamb to Girt DRAWING NO. SD93



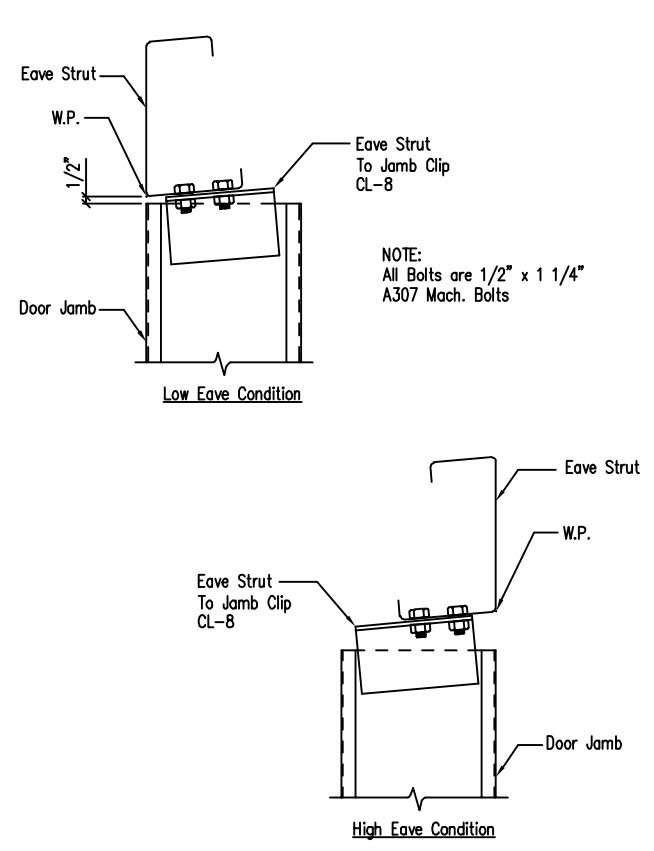
Roof Uplift and Wall Suction Strap Details DRAWING NO. SD102



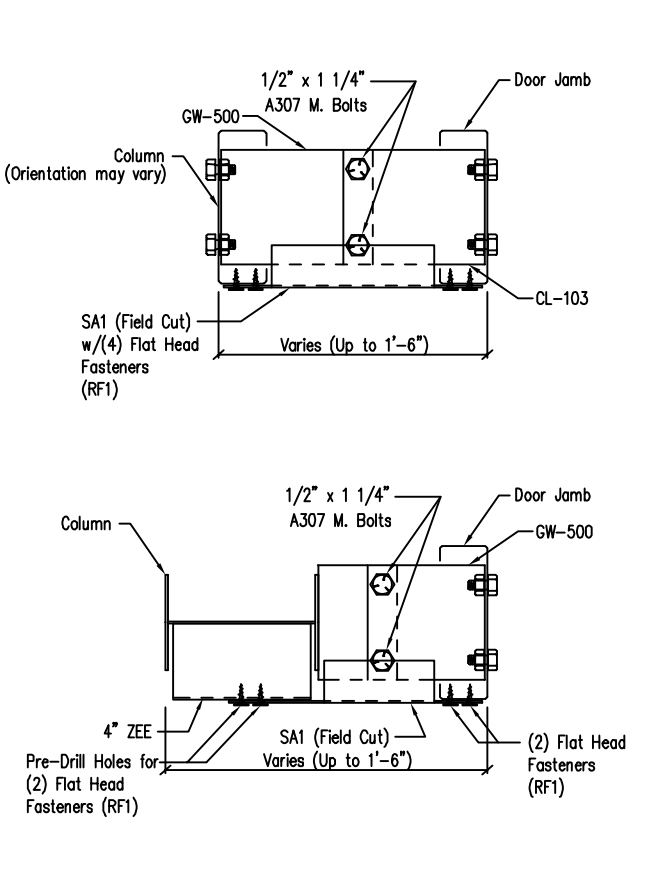
Girt/Header to Jamb DRAWING NO. SD95



Framed Opening w/ Girt Header DRAWING NO. SD104



Jamb To Eave Strut 2:12 Roof Pitch and Higher DRAWING NO. SD97



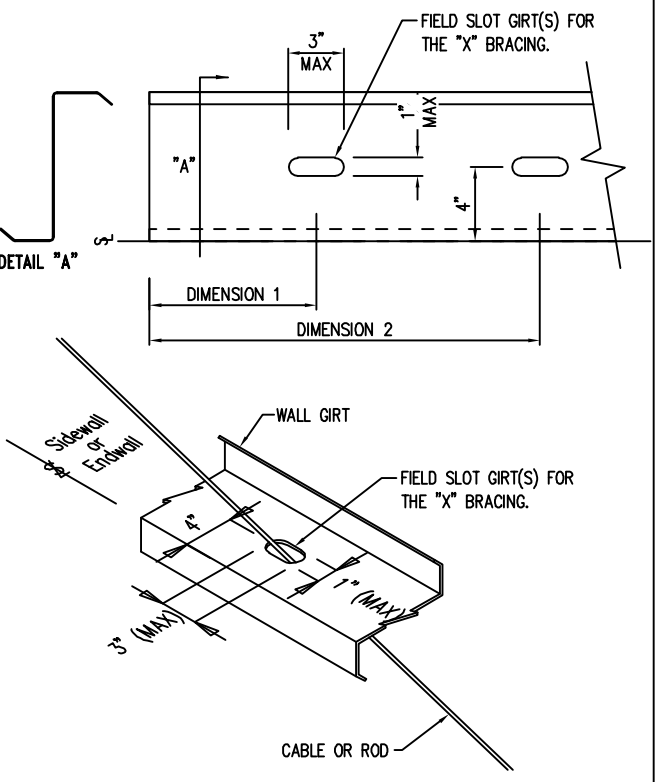
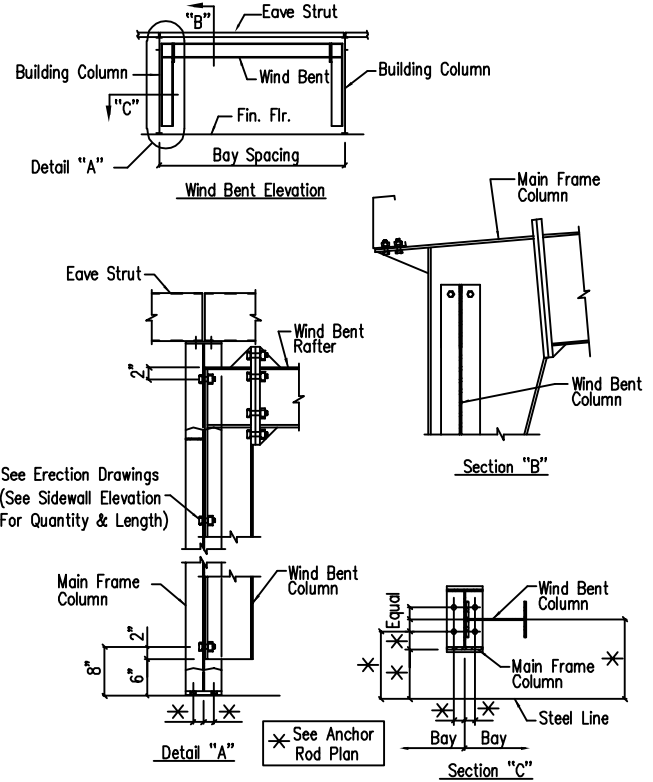
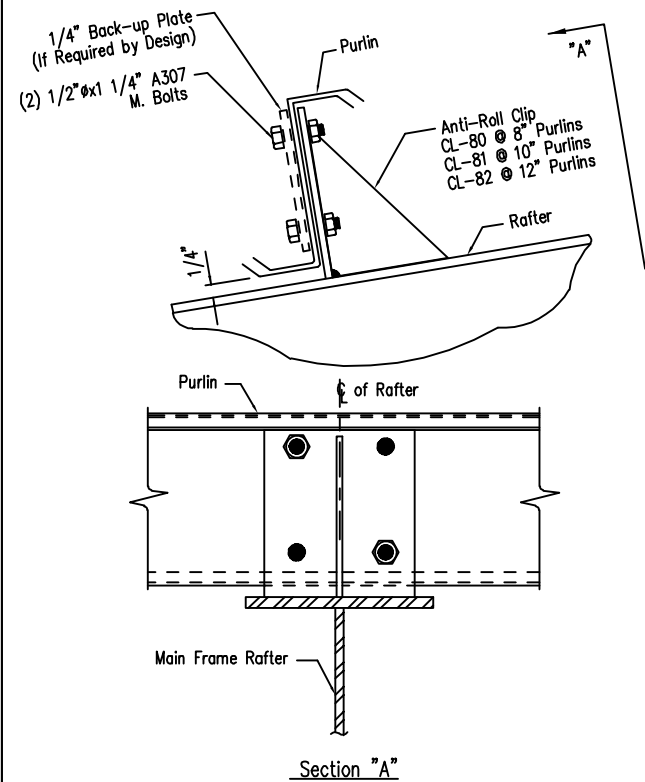
Column to Door Jamb Clip Attachment DRAWING NO. SD113

ISSUE	DATE	DWN.	CHK.	ENG.
APPROVAL	06/24/24	MEZ	RTS	
PERMIT	07/01/24	AA	CAF	RTS
ERECTION	07/15/24	PKD	PKD	RTS

1101 3RD AVE
GRAND JUNCTION, CO 81501
PHONE: (800)-497-2135
WWW.GREATWESTERNBUILDINGS.COM

CUSTOMER NAME:	N.T.S.
PROJECT NAME:	
PROJECT LOCATION:	
PROJECT COUNTY:	
PROJECT END USE:	
CUSTOMER PHONE NUMBER:	
CUSTOMER EMAIL:	
SCALE:	N.T.S.
SHEET NUMBER:	14 OF 18
JOB NUMBER:	94959
SHEET TITLE:	DETAIL DRAWINGS

THIS SEAL PERTAINS ONLY TO THE MATERIALS DESIGNED AND SUPPLIED BY GREAT WESTERN BUILDINGS. THE DRAWINGS AND THE METAL BUILDING WHICH THEY REPRESENT ARE THE PRODUCT OF GREAT WESTERN BUILDINGS. THE REGISTERED PROFESSIONAL ENGINEER WHOSE SEAL AND SIGNATURE APPEARS ON THESE DRAWINGS IS EMPLOYED BY GREAT WESTERN BUILDINGS AND DOES NOT SERVE AS OR REPRESENT THE OVERALL PROJECT ENGINEER OF RECORD AND SHALL NOT BE CONSTRUED AS SUCH.



NOTE: FIELD SLOT THE GIRTS USING THE CORRESPONDING DIMENSIONS AS SHOWN ON THE "FIELD WORK TABLE" ON THE WALL ELEVATION.

Purlin to Anti-Roll Clip Connection
DRAWING NO. SD115
Created On: 3/25/11

Flush Wind Bent (Floating)
DRAWING NO. SD150
Created On: 5/25/12
Revised On: 7/2/14

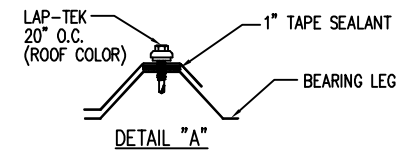
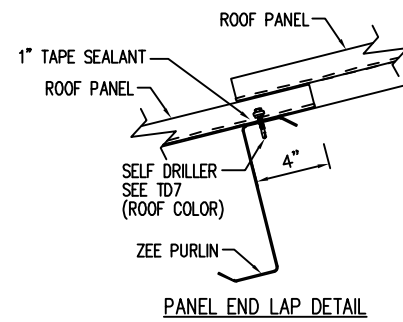
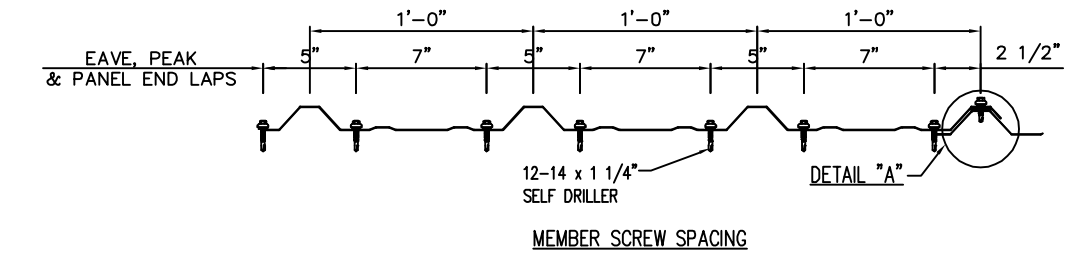
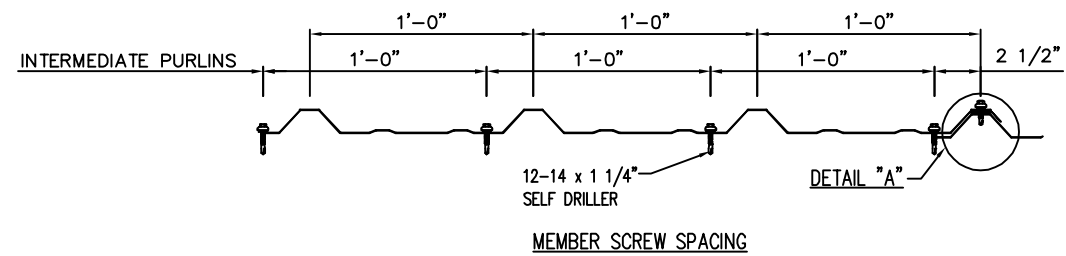
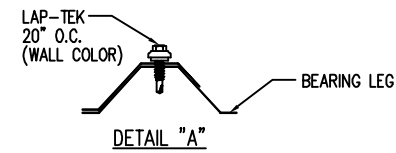
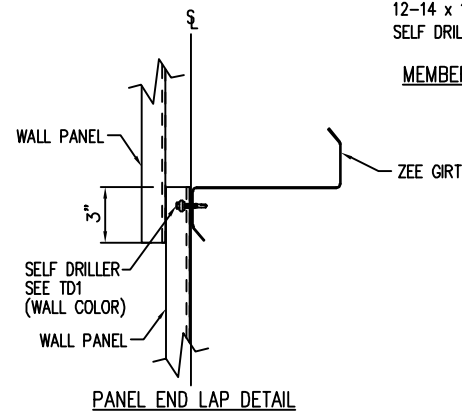
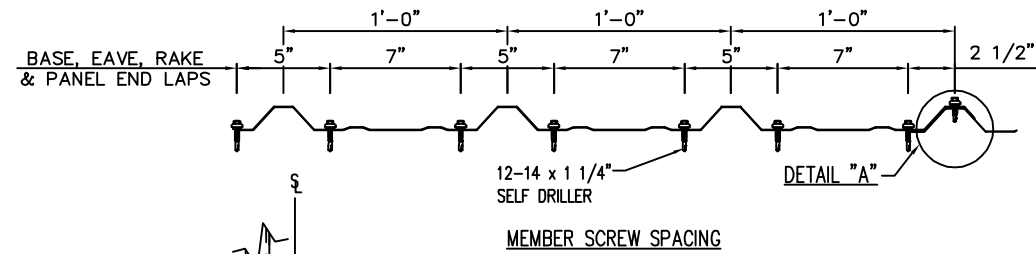
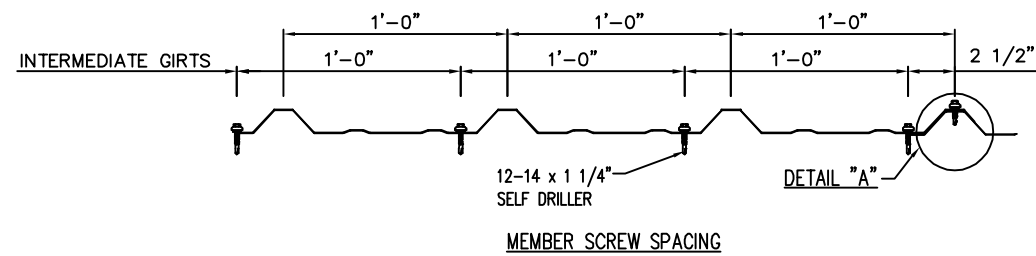
Field Work Slotting for Bracing
DRAWING NO. SD202
Created On: 03/07/20

ISSUE	DATE	DWN.	CHK.	ENG.
APPROVAL	06/20/24	MEZ	MEZ	RTS
PERMIT	07/07/24	AA	CAF	RTS
ERECTION	07/15/24	PKD	PKD	RTS

1101 3RD AVE
GRAND JUNCTION, CO 81501
PHONE: (800)-497-2135
WWW.GREATWESTERNBUILDINGS.COM

CUSTOMER NAME:	
PROJECT NAME:	
PROJECT LOCATION:	
PROJECT COUNTY:	
PROJECT END USE:	
CUSTOMER PHONE NUMBER:	
CUSTOMER EMAIL:	
SCALE:	N.T.S.
SHEET NUMBER:	15 OF 18
JOB NUMBER:	94959
SHEET TITLE:	DETAIL DRAWINGS

THIS SEAL PERTAINS ONLY TO THE MATERIALS DESIGNED AND SUPPLIED BY GREAT WESTERN BUILDINGS. THE DRAWINGS AND THE METAL BUILDING WHICH THEY REPRESENT ARE THE PRODUCT OF GREAT WESTERN BUILDINGS. THE REGISTERED PROFESSIONAL ENGINEER WHOSE SEAL AND SIGNATURE APPEARS ON THESE DRAWINGS IS EMPLOYED BY GREAT WESTERN BUILDINGS AND DOES NOT SERVE AS OR REPRESENT THE OVERALL PROJECT ENGINEER OF RECORD AND SHALL NOT BE CONSTRUED AS SUCH.

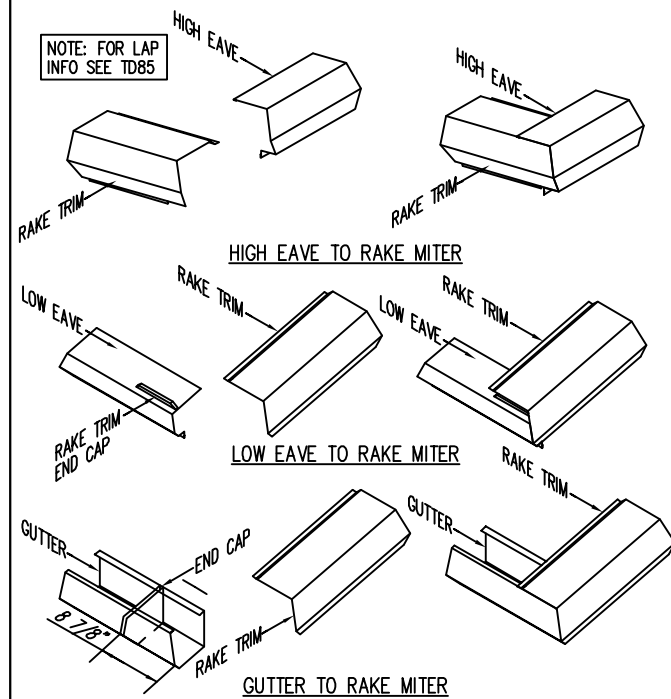
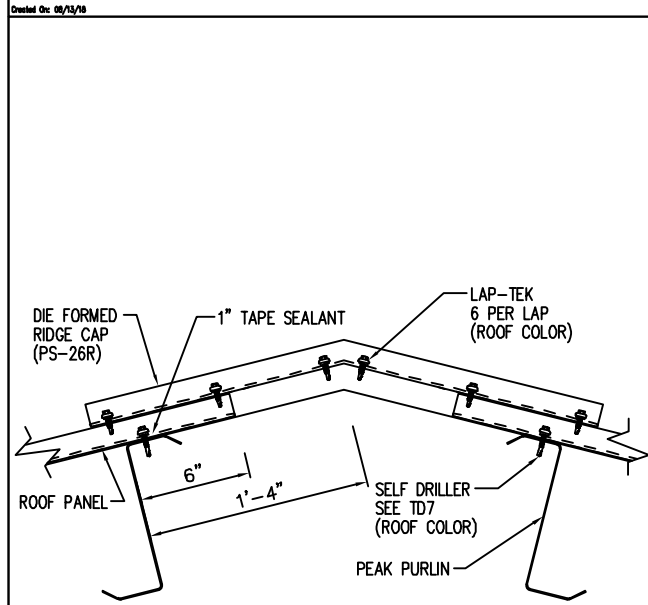


Fastener Location at Wall - PBR

DRAWING NO.
TD1

Fastener Location at Roof - PBR

DRAWING NO.
TD7



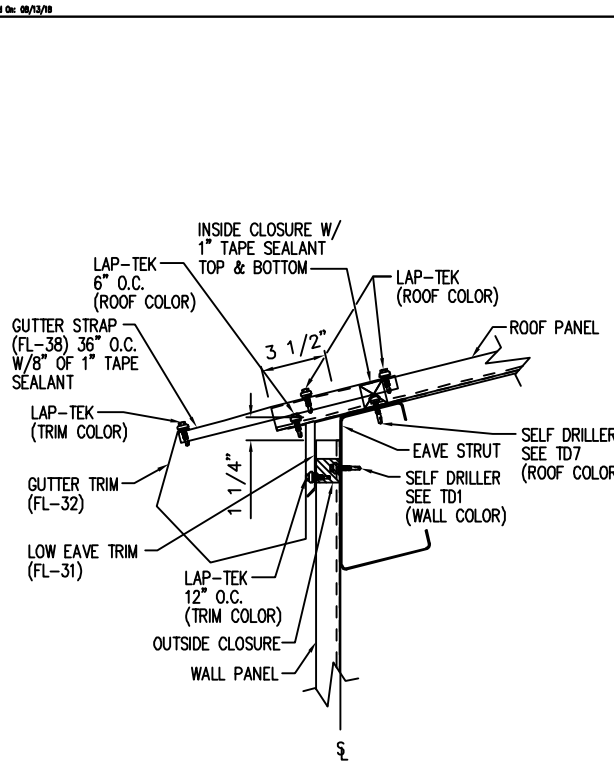
LOCATE THE GUTTER END CAP 8 7/8" AWAY FROM THE FRONT MITER OF THE GUTTER. IF DONE PROPERLY THE END CAP SHOULD LINE UP WITH THE LOW LEG OF THE RAKE TRIM THAT SITS ON TOP OF THE ROOF PANEL. APPLY ONE BEAD OF TUBE SEALANT (NOT BY G.W.B.) BETWEEN THE END CAP SURFACE AND THE GUTTER. ATTACH THE END CAP TO THE GUTTER USING (12) POP RIVETS. CHECK TO MAKE SURE ALL EDGES ARE SEALED WITH TUBE SEALANT (NOT BY G.W.B.). INSERT THE GUTTER INTO THE RAKE TRIM. ALIGN THE MITERED EDGES AND ATTACH TO THE RAKE TRIM WITH (12) POP RIVETS.

Die Formed Ridge Detail - PBR
Up to a 4:12 Roof Slope

DRAWING NO.
TD8

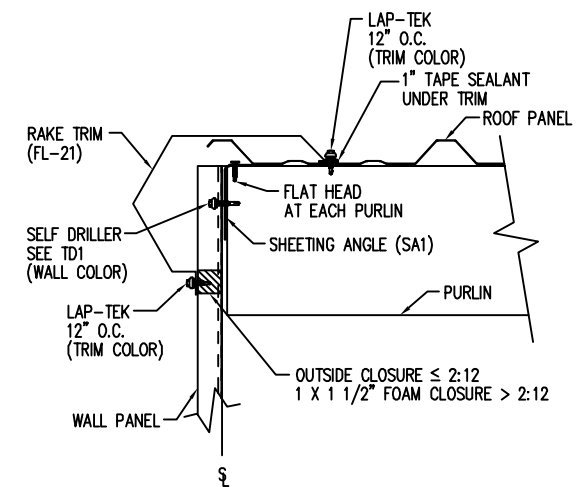
Sculptured Trim Detail - PBR

DRAWING NO.
TD13



Low Eave Gutter Detail - PBR
Sculptured Gutter - Sheeted Wall

DRAWING NO.
TD15



NOTE: FIELD SLOPE CUT WALL PANELS AS REQUIRED FOR ROOF SLOPE

Rake Detail - PBR
Sculptured Rake - Sheeted Wall

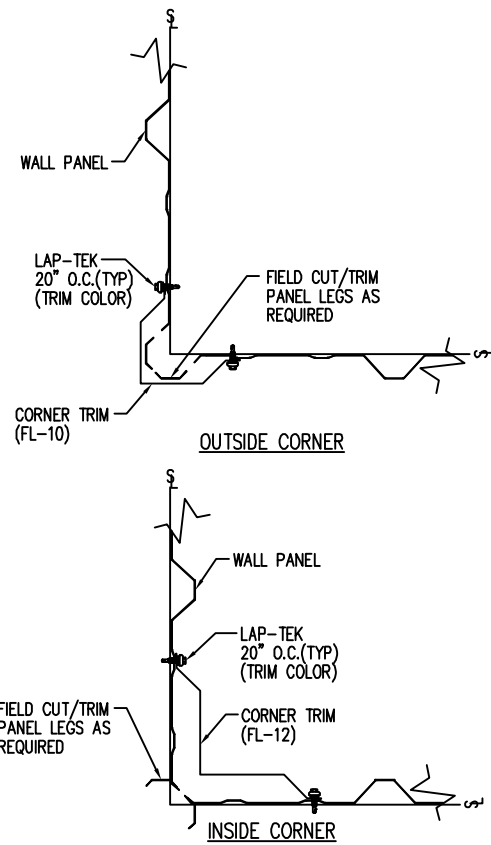
DRAWING NO.
TD35

ISSUE	DATE	DWN.	CHK.	ENG.
APPROVAL	06/24/18	MEZ	RTS	
PERMIT	07/07/18	AA	CAF	RTS
ERECTION	07/15/18	PKD	PKD	RTS

1101 3RD AVE
GRAND JUNCTION, CO 81501
PHONE: (800)-497-2135
WWW.GREATWESTERNBUILDINGS.COM

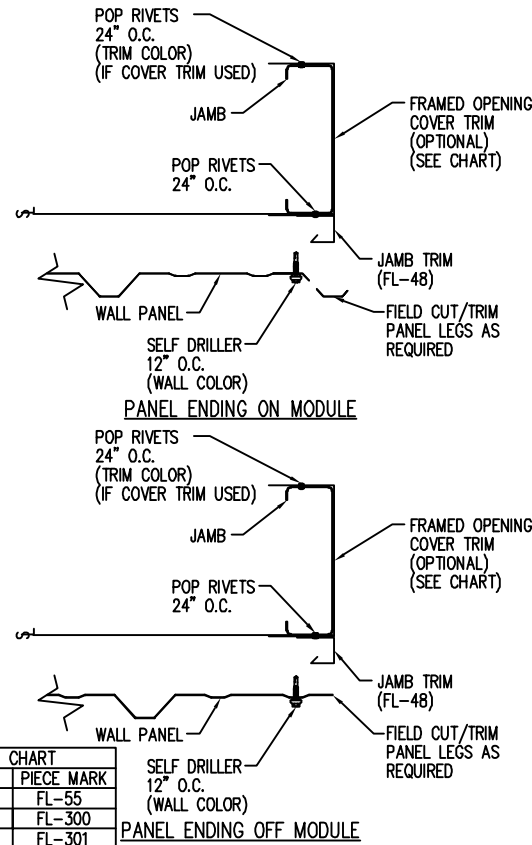
CUSTOMER NAME:	
PROJECT NAME:	
PROJECT LOCATION:	
PROJECT COUNTY:	
PROJECT END USE:	
CUSTOMER PHONE NUMBER:	
CUSTOMER EMAIL:	
SCALE:	N.T.S.
SHEET NUMBER:	16 OF 18
JOB NUMBER:	94959
SHEET TITLE:	DETAIL DRAWINGS

THIS SEAL PERTAINS ONLY TO THE MATERIALS DESIGNED AND SUPPLIED BY GREAT WESTERN BUILDINGS. THE DRAWINGS AND THE METAL BUILDING WHICH THEY REPRESENT ARE THE PRODUCT OF GREAT WESTERN BUILDINGS. THE REGISTERED PROFESSIONAL ENGINEER WHOSE SEAL AND SIGNATURE APPEARS ON THESE DRAWINGS IS EMPLOYED BY GREAT WESTERN BUILDINGS AND DOES NOT SERVE AS OR REPRESENT THE OVERALL PROJECT ENGINEER OF RECORD AND SHALL NOT BE CONSTRUED AS SUCH.



Section at Corner Detail - PBR

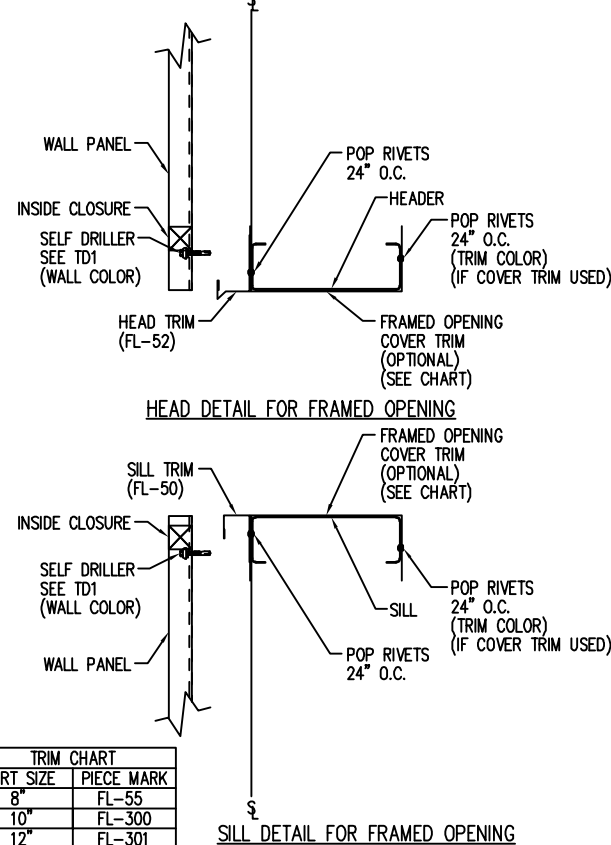
DRAWING NO. TD40



TRIM CHART	
GIRT SIZE	PIECE MARK
8"	FL-55
10"	FL-300
12"	FL-301

Framed Opening Jamb Detail - PBR

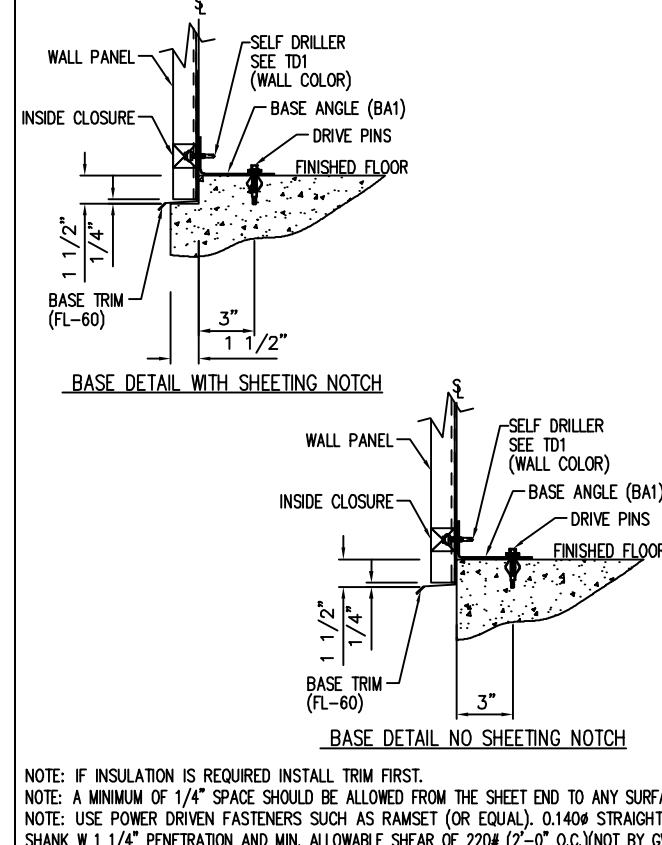
DRAWING NO. TD51



TRIM CHART	
GIRT SIZE	PIECE MARK
8"	FL-55
10"	FL-300
12"	FL-301

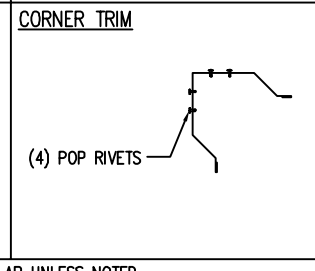
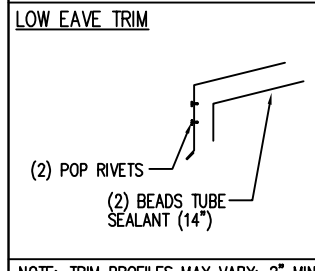
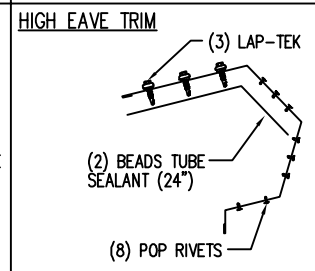
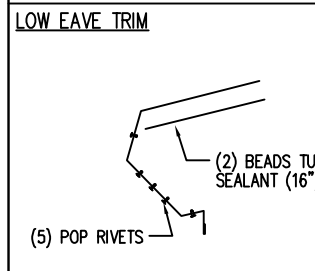
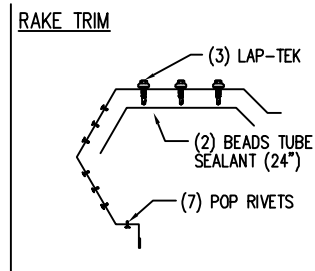
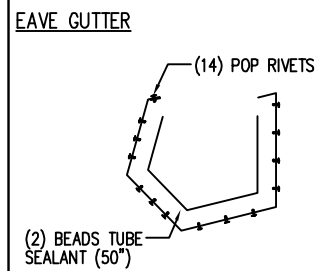
Framed Opening Head and Sill Details - PBR

DRAWING NO. TD52



Base Angle w/Trim Details

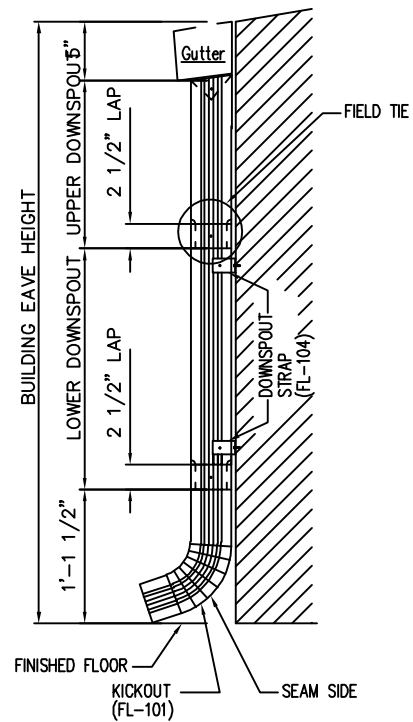
DRAWING NO. TD74



NOTE: TRIM PROFILES MAY VARY; 2" MIN. LAP UNLESS NOTED
NOTE: TUBE SEALANT (NOT BY G.W.B.)

Trim Laps - PBR Sculptured

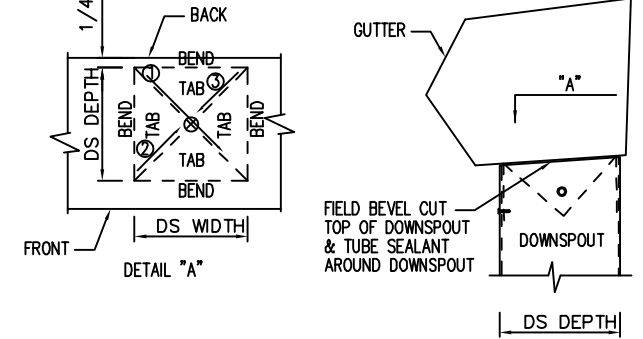
DRAWING NO. TD85



NOTE: REFERENCE DETAIL TD96 FOR SPLICE DETAIL

Downspout Elevation

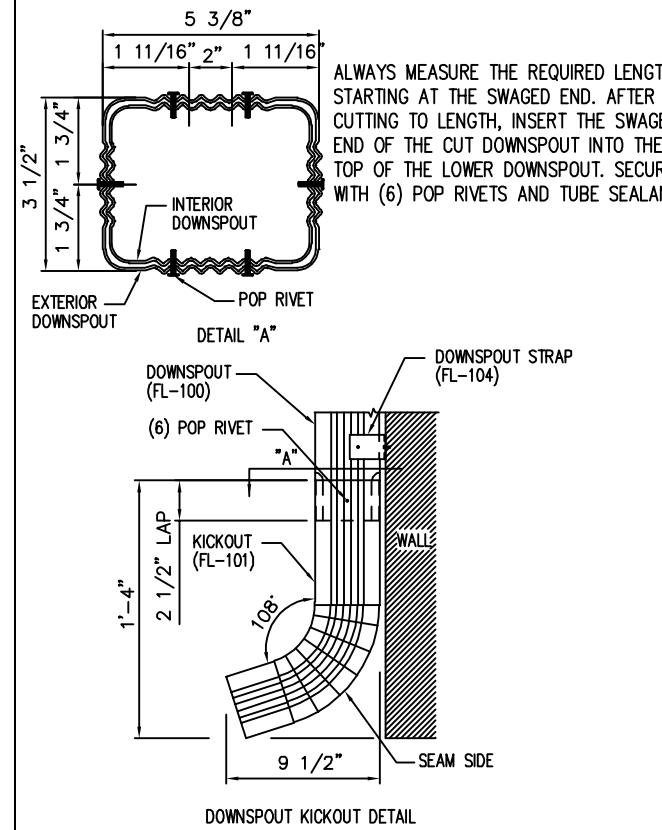
DRAWING NO. TD90



- REFER TO THE BUILDING ERECTIO DRAWINGS FOR THE LOCATION AN SPACING OF THE DOWNSPOUTS.
- LOCATE ALL DOWNSPOUTS OVER A MAJOR PANEL RIB IF POSSIBLE.
- MAKE A CARBOARD TEMPLATE OF THE DOWNSPOUT SHAPE. PLACE THE TEMPLATE ON THE BOTTOM OF THE GUTTER AND TRACE THE OUTLINE. REMOVE THE TEMPLATE AND DRAW A LINE FROM CORNER TO CORNER, FORMING AN "X" PATTERN.
- DRILL A HOLE AT THE CENTER OF THE "X". USING TIN SNIPS, CUT ALONG THE LINES OF THE "X" ONLY. DO NOT CUT ALONG THE OUTSIDE LINES OF THE DOWNSPOUT SQUARE.
- BEND EACH TRIANGULAR TAB DOWN TOWARD THE GROUND, 90° TO THE BOTTOM OF THE GUTTER.
- POSITION THE TOP OF THE DOWNSPOUT UNDER THE GUTTER. MAKE SURE ALL FOUR GUTTER TABS ARE ON THE INSIDE OF THE DOWNSPOUT.
- INSTALL POP RIVETS THROUGH THE DOWNSPOUT INTO THE GUTTER TAB. ONLY THE TWO SIDES AND THE FRONT OF THE DOWNSPOUT WILL RECEIVE POP RIVETS.

Downspout to Gutter Attachment Detail

DRAWING NO. TD95

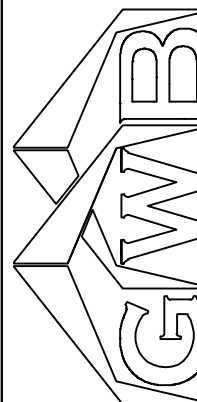


NOTE: TUBE SEALANT (NOT BY G.A.B.)

Downspout Kickout and Splice Detail

DRAWING NO. TD96

DATE	DWN.	CHK.	ENG.
06/24/24	MEZ	MEZ	RTS
07/01/24	AA	CAF	RTS
07/15/24	PKD	PKD	RTS



1101 3RD AVE
GRAND JUNCTION, CO 81501
PHONE: (800)-497-2135
WWW.GREATWESTERNBUILDINGS.COM

CUSTOMER NAME:	
PROJECT LOCATION:	
PROJECT COUNTY:	
PROJECT END USE:	
CUSTOMER PHONE NUMBER:	
CUSTOMER EMAIL:	
SCALE:	N.T.S.
SHEET NUMBER:	17 OF 18
JOB NUMBER:	94959
SHEET TITLE:	DETAIL DRAWINGS

THIS SEAL PERTAINS ONLY TO THE MATERIALS DESIGNED AND SUPPLIED BY GREAT WESTERN BUILDINGS. THE DRAWINGS AND THE METAL BUILDING WHICH THEY REPRESENT ARE THE PRODUCT OF GREAT WESTERN BUILDINGS. THE REGISTERED PROFESSIONAL ENGINEER WHOSE SEAL AND SIGNATURE APPEARS ON THESE DRAWINGS IS EMPLOYED BY GREAT WESTERN BUILDINGS AND DOES NOT SERVE AS OR REPRESENT THE OVERALL PROJECT ENGINEER OF RECORD AND SHALL NOT BE CONSTRUED AS SUCH.

