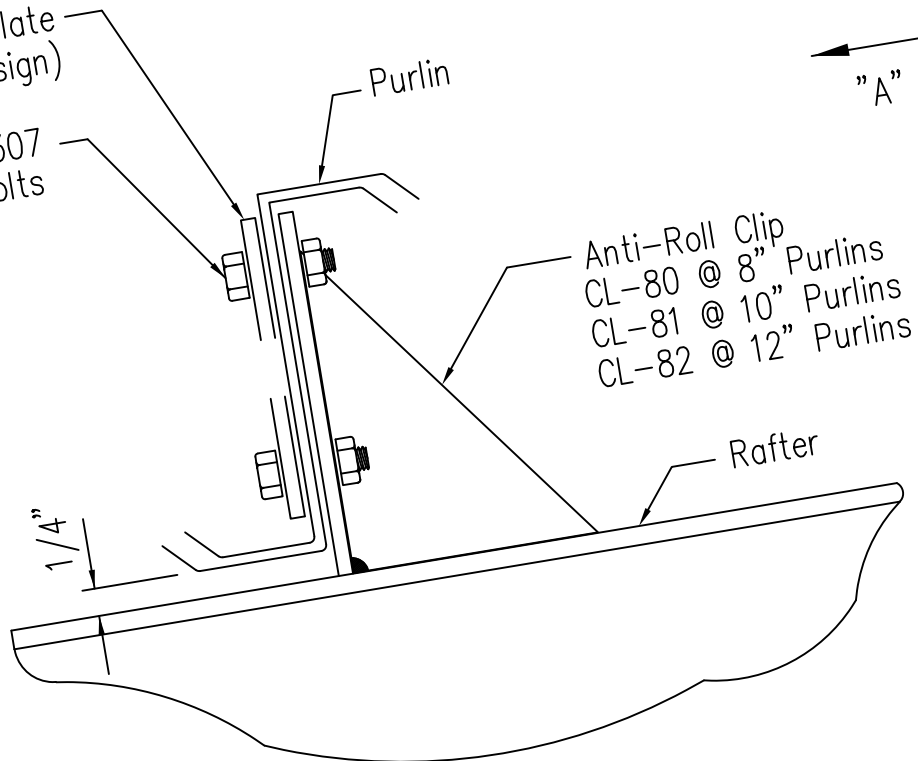
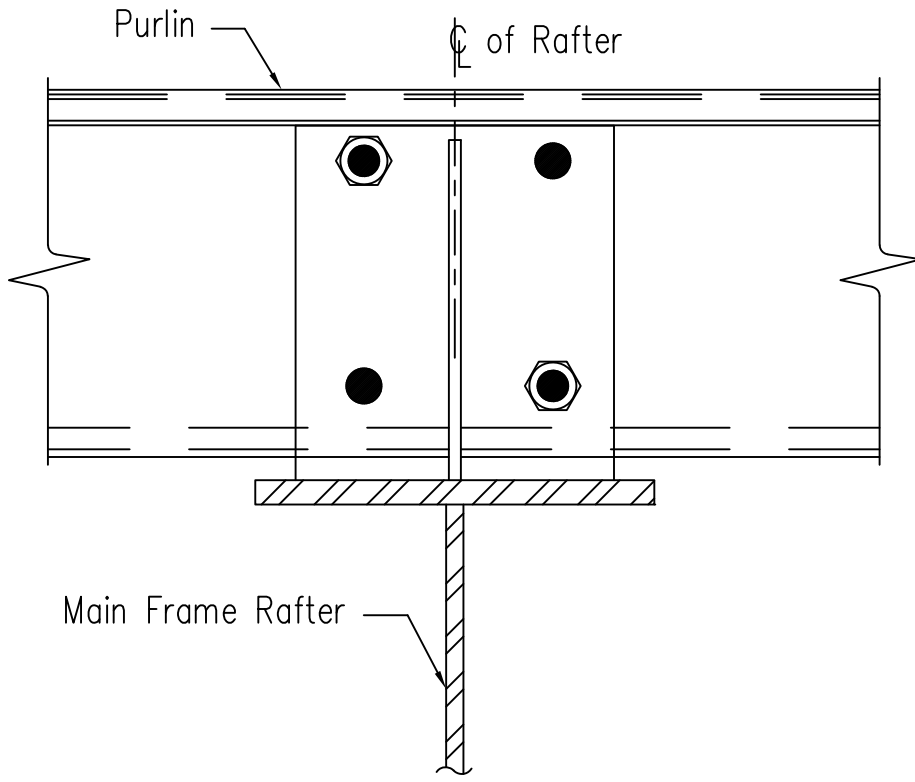


1/4" Back-up Plate
(If Required by Design)
(2) 1/2" ϕ x 1 1/4" A307
M. Bolts



Anti-Roll Clip
CL-80 @ 8" Purlins
CL-81 @ 10" Purlins
CL-82 @ 12" Purlins



Section "A"

Purlin to Anti-Roll Clip Connection

DRAWING NO.

SD115